

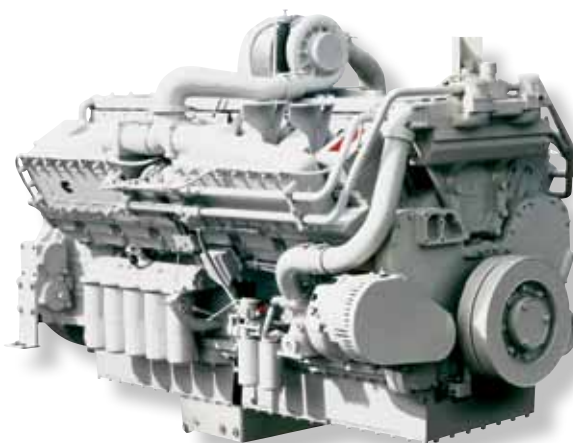


# KTA50

## Marine Propulsion & Auxiliary Engines

### Specifications

<b>Configuration</b>	V-16 cylinder, 4 stroke diesel
<b>Bore &amp; Stroke</b>	159 mm X 159 mm (6.25 in X 6.25 in)
<b>Displacement</b>	50 L (3067 in <sup>3</sup> )
<b>Rotation</b>	Counterclockwise facing flywheel
<b>Aspiration</b>	Turbocharged/Aftercooled
<b>Emissions</b>	IMO Tier I



### Dimensions

<b>Length</b>	2694 mm	106 in
<b>Width</b>	1564 mm	62 in
<b>Height</b>	2260 mm	89 in
<b>Weight</b>	5166 kg	11389 lb

Dimensions and weight may vary based on selected engine configuration

### Ratings

Engine Model	Output Power		Engine Speed RPM	Rating Definition	Fuel Consumption	
	kW	HP			Rated Speed L/hr (gal/hr)	ISO* L/hr (gal/hr)
<b>Variable Speed</b>						
KTA50-M2	1044	1400	1600	Continuous	261.3 (69.0)	179.0 (47.3)
KTA50-M2	1193	1600	1800	Continuous	290.8 (76.8)	209.1 (55.2)
KTA50-M2	1193	1600	1900	Heavy Duty	299.8 (79.2)	208.5 (55.1)
KTA50-M2	1268	1700	1800	Heavy Duty	309.9 (81.9)	221.2 (58.4)
KTA50-M2	1342	1800	1900	Heavy Duty	336.0 (88.8)	232.8 (61.5)
KTA50-M2	1398	1875	1950	MCD	355.0 (93.8)	248.7 (65.7)
<b>Fixed Speed</b>						
KTA50-D(M1)	1007	1350	1500 (50 Hz)	Prime	229.0 (60.5)	118.9 (31.4)
KTA50-D(M1)	1097	1470	1500 (50 Hz)	Prime	244.5 (64.6)	129.5 (34.2)
KTA50-D(M1)	1141	1530	1800 (60 Hz)	Prime	262.7 (69.4)	138.6 (36.6)
KTA50-D(M1)	1291	1730	1800 (60 Hz)	Prime	290.7 (76.8)	152.8 (40.4)

\* Average fuel consumption based on ISO 8178 E3 Standard Test Cycle (variable speed models) and ISO 8178 D2 Standard Test Cycle (fixed speed models)

The Right Technology. **Matters.**

# KTA50

## Features and Benefits

**Engine Design** - Low profile for ease of installation and service. Replaceable wet cylinder liners offer longer life and lower rebuild cost. Gallery cooled pistons for maximum durability

**Fuel System** - Dependable Cummins PT fuel system can be operated mechanically or with CENTRY electronics for precise engine fueling. Step Timing Control (STC) allows for smooth engine acceleration under load

**Cooling System** - Keel cooled or engine mounted plate heat exchanger for reduced installation cost and less maintenance. Spin-on Cummins water treatment filters for protection against cooling system corrosion

**Exhaust System** - Dry exhaust manifold with water shielding for reduced fuel consumption and improved performance

**Air System** - Marine grade air filters with air inlet restriction indicator. Twin Cummins turbochargers optimized for marine usage

**Lubrication System** - Standard (151 L [40 gal]) or high capacity (185 L [49 gal]) marine grade oil pan. Cummins spin-on oil filter cartridge available handed for simplified service

**Electronics** - 24-volt standard electrical system with 12-volt option available. Marine grade wiring harness

**Certifications** - Complies with IMO Tier I emissions regulations. Certificates of compliance are available from the U.S. EPA and Lloyd's Register of Shipping. Consult your local Cummins professional for a complete listing of current marine agency approvals for this engine

**Optional Equipment** - Contact your local Cummins professional for a list of optional equipment available on this engine

- CENTINEL™ oil management system
- Prelub starter protects against dry starts
- Direct mounted front power take-off
- Duplex lube and fuel filtration
- Engine room & pilot house panel with analog gauges



Cummins Inc.  
4500 Leeds Avenue - Suite 301  
Charleston, SC 29405-8539  
U.S.A.

Internet: [marine.cummins.com](http://marine.cummins.com)  
Email: [wave.master@cummins.com](mailto:wave.master@cummins.com)

Bulletin M10053 Printed in U.S.A. REV 11/10  
©2010 Cummins Inc.