



# POWERCOMMAND CLOUD™ REMOTE MONITORING SYSTEM



***“Cummins Digital Solutions will provide customers with the ability to manage their power system assets, globally”***



Visibility – Anytime/  
Anywhere



24 x 7  
Monitoring



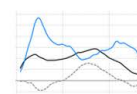
On the go  
access



Notifications



Reporting &  
Analytics



Data  
Trending



Remote  
Service



Fleet  
Management



## Description

PowerCommand Cloud is a robust and reliable remote monitoring system that provides information and notifications to ensure your equipment is available when you need it.

With easy-to-use mobile and web applications providing you instant access to your equipment, you can make the right decisions, right away — minimizing downtime and maximizing power system availability and performance.

## Highlights

- Remote Monitoring through PowerCommand Cloud™ web and mobile applications
- Multi-language support
- Site and asset status at a glance
- Multiple site and fleet management
- Notifications
- Asset Control
- Secure data transmission and storage
- Data Trending with export capability
- Maintenance alerts
- PowerCommand Cloud is supported by a worldwide network of independent distributors who provide parts, service and warranty support

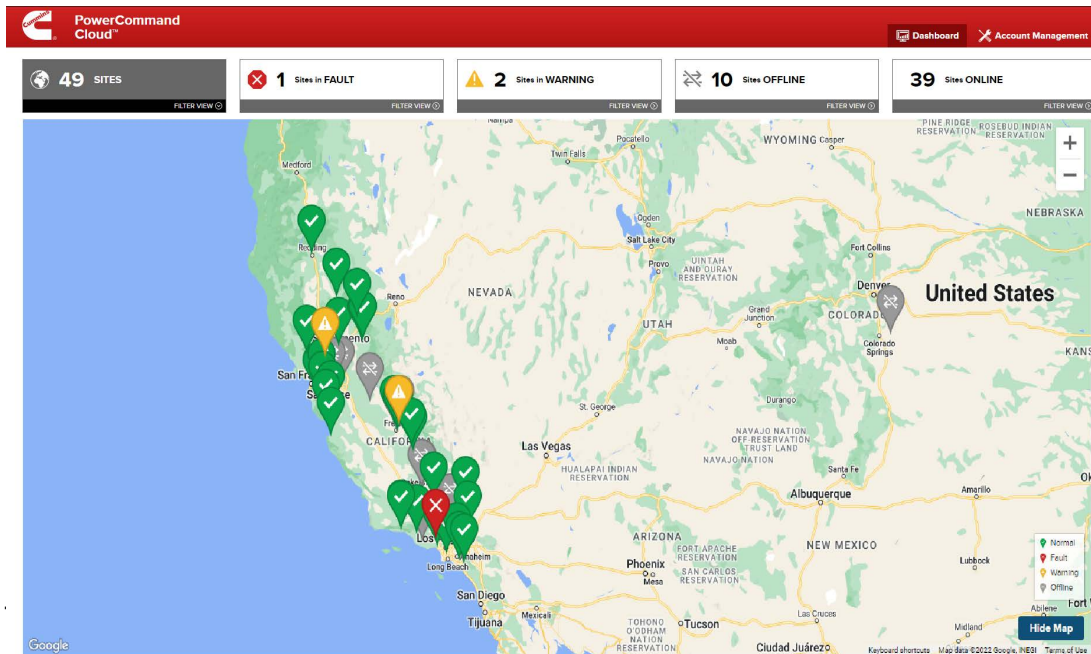


## PowerCommand Cloud Features

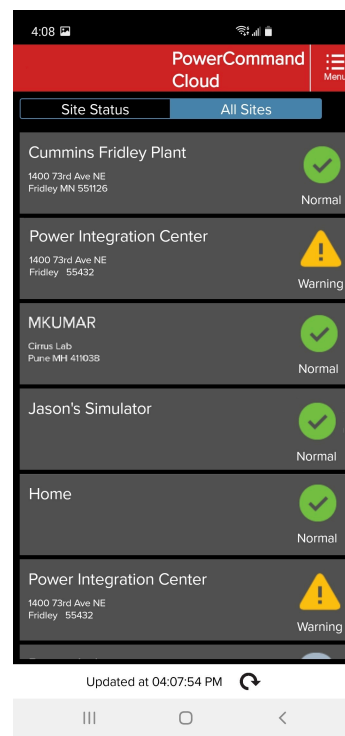
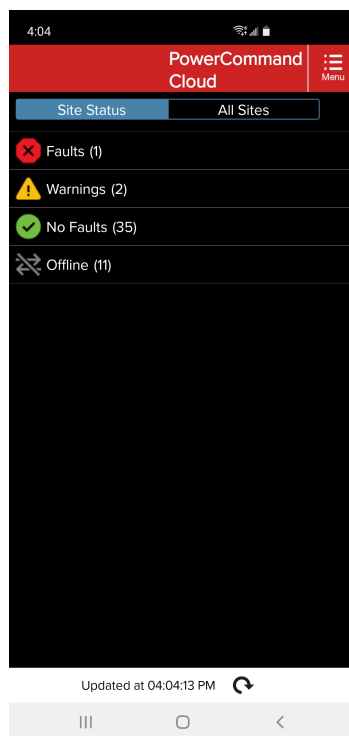
- **24x7 Remote Monitoring:** Web and mobile device applications monitor remote equipment including generators, transfer switches, digital master control (DMC) products and sensors.
- **Integration with the QuietConnect™ Home Standby Generators:** PowerCommand Cloud enables dealers and distributors to monitor their home and small business customer's QuietConnect™ generators.
- **Asset Control:** Control the power generation asset via start, stop, exercise scheduler and fault reset commands.
- **Notification:** Users receive alerts of faults, warnings and other events via email and push notifications.
- **Fleet Management:** At-a-glance visibility of multiple site's current status allows for immediate identification of distressed assets and fleet health.
- **Event Storage and Export:** Fault, warning and other events are automatically stored and available for review directly in the application or export for further analysis.
- **Asset Data Storage:** Parameter data from assets are automatically stored and available for data trending/graphing directly in the application or export for further analysis.
- **Gateway Firmware Updates:** Update the gateway firmware remotely 'over-the-air' eliminates unnecessary site visits to maintain gateway security and feature enhancements.
- **Multiple Languages:** Multiple languages including English, German, Italian, and more. See PowerCommand Cloud application for complete list.
- **Mobile Device Support:** PowerCommand Cloud is available for both iOS and Android devices.
- **Third-Party Generator Support:** Integrate third-party power system equipment (Generator, Auto Transfer Switch) using CCM-G, CCM-T or Wired Genset solution to accomplish remote monitoring/controlling capabilities.
- **Maintenance Reminders:** Customize maintenance reminders by asset based on run hours, calendar time or both to prevent missed maintenance intervals extending equipment life and performance.

# PowerCommand Cloud™ User Interface

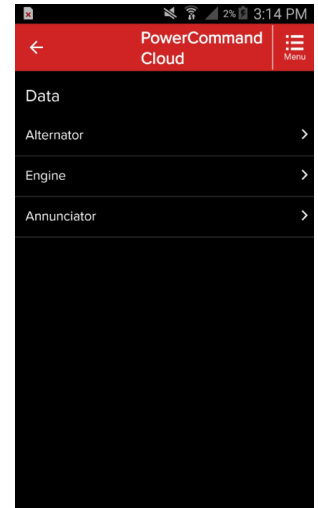
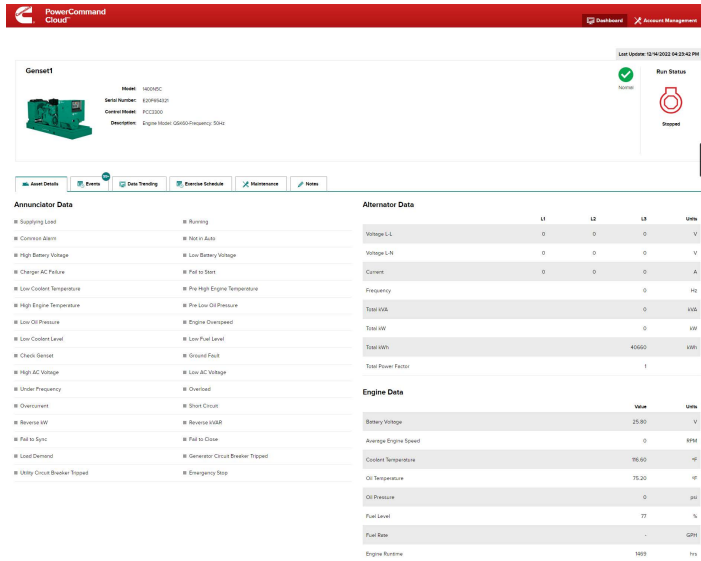
Users can remotely access real-time information using mobile and web applications



The Dashboard provides at-a-glance visibility of the overall fleet status that include multiple sites and assets connected to the cloud. Users have the flexibility to filter sites by fault, warning and connection status to quickly identify and access individual asset information for distressed equipment.



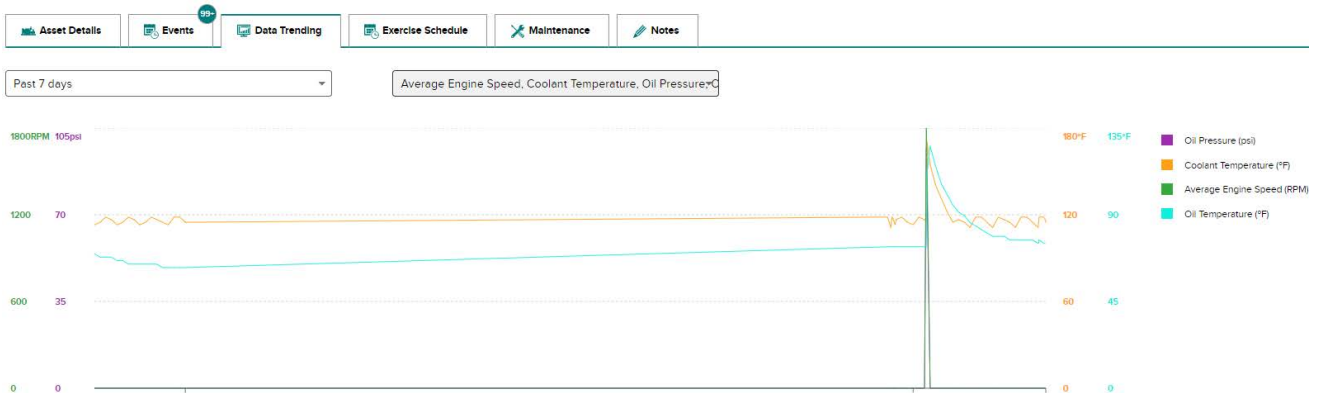
# Generator Information



Updated at 03:13:57 PM

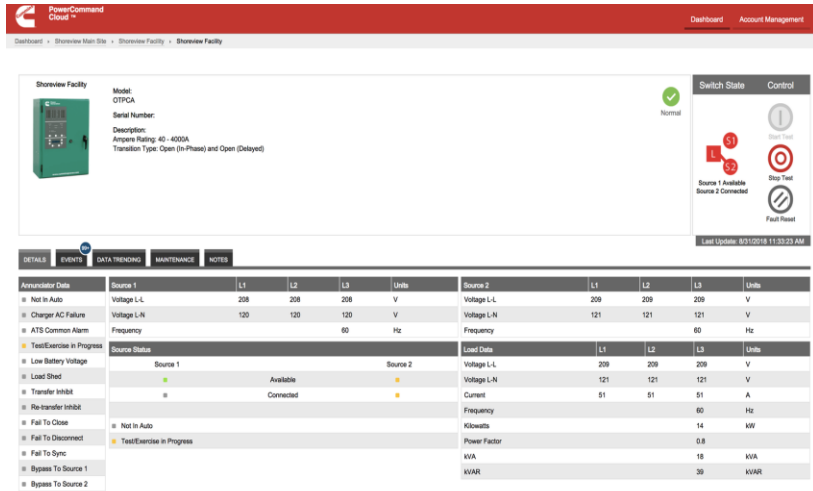
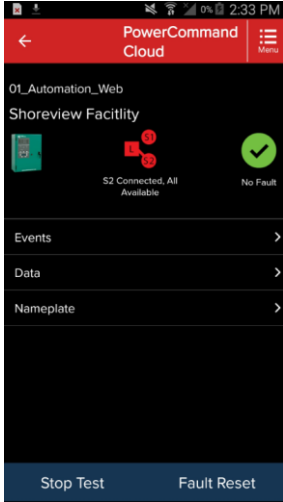
The generator status and telemetry information is available via both the mobile and web applications

- **Asset Details:** Easy access to Generator's details such as model, serial number, and control model.
- **Annunciator Data:** This section displays the key status, warning and fault events where color coding is used (green, amber, red) depending on the event severity according to NFPA110.
- **Alternator Data:** User can access vital electrical genset information.
- **Engine Data:** Engine information is available in this section.
- **Exercise Scheduler:** User can set the Exercise Schedule for each asset.
- **Maintenance Alert:** PowerCommand Cloud will alert the user when Maintenance is required based on a time based schedule or engine hours.
- **Data Trending:** The user can create graphs for an asset by selecting parameters and duration. In addition, asset data can be exported to .csv files for further analysis.



# Automatic Transfer Switch (ATS) Information

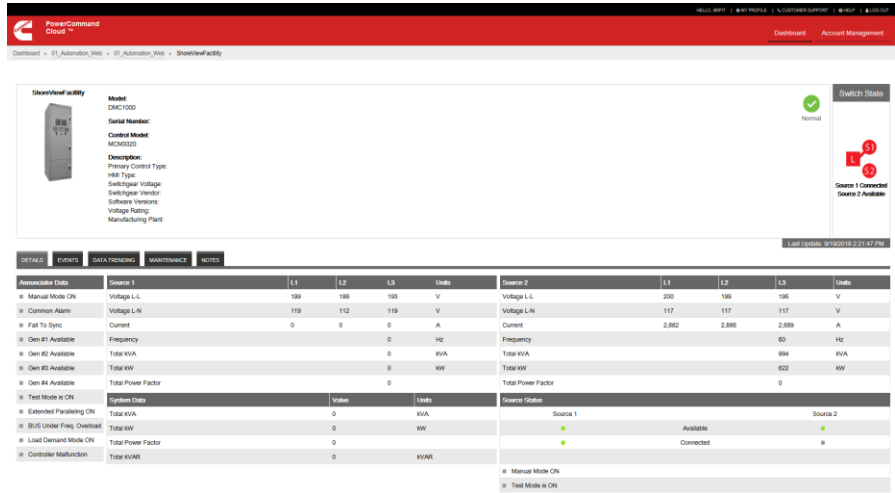
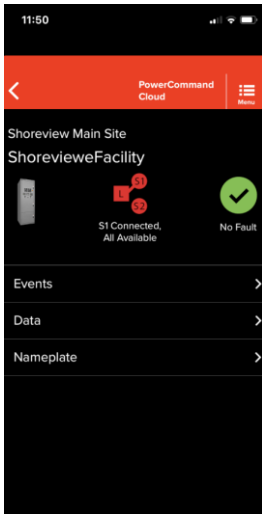
ATS status and telemetry information is available on the ATS page. The user can also to create data trend graphs for a particular device by selecting a parameter and duration.



- **Asset Details:** Easy access to ATS's details such as model, serial number, and control model.
- **Annunciator Data:** This section displays the key status, warning and fault events where color coding is used (green, amber, red) depending on the event severity according to NFPA110.
- **Sources Data:** User can access vital electrical source information including status.
- **Load Data:** Load information is available in this section.
- **Data Trending:** The user can create graphs for a particular device by selecting a parameter and duration. In addition, asset data can be exported to .csv files.
- **Maintenance Alert:** PowerCommand Cloud will alert the user when Maintenance is required based on the recommended service intervals.

# Digital Master Control (DMC) Information

DMC status and telemetry information is available on the DMC page. The user can also to create data trend graphs for a particular device by selecting a parameter and duration.



- **Asset Details:** Easy access to DMC details such as model, serial number, control model along with system information.
- **Events:** View operational events including Warning & Shutdowns along with the associated timestamps.
- **Data Trending:** The user can create graphs for a particular device by selecting a parameter and duration. In addition, asset data can be exported to .csv files.
- **Maintenance Alert:** PowerCommand Cloud will alert the user when Maintenance is required based on the recommended service intervals.

## Sensors

By selecting the Sensors tab the user can view all configured sensors in the inputs. In addition to device specific Inputs, the user can add an AUX 101 (8-configurable inputs) and an AUX 102 (4-non configurable discrete inputs) for additional remote monitoring capability. The Sensors Page displays configured sensors (states/values, low warnings and high warnings). Similar to the generator set and transfer switch data, the user can access specific event logs associated with all configured sensors.

## Notifications

Get notified when your equipment needs attention. PowerCommand Cloud™ sends notifications and gives you instant access to your equipment enabling real-time monitoring and control so you can make the right decisions, right away — minimizing downtime and maximizing power system performance.

**For more information contact your local Cummins distributor  
or visit [power.cummins.com](https://power.cummins.com)**

