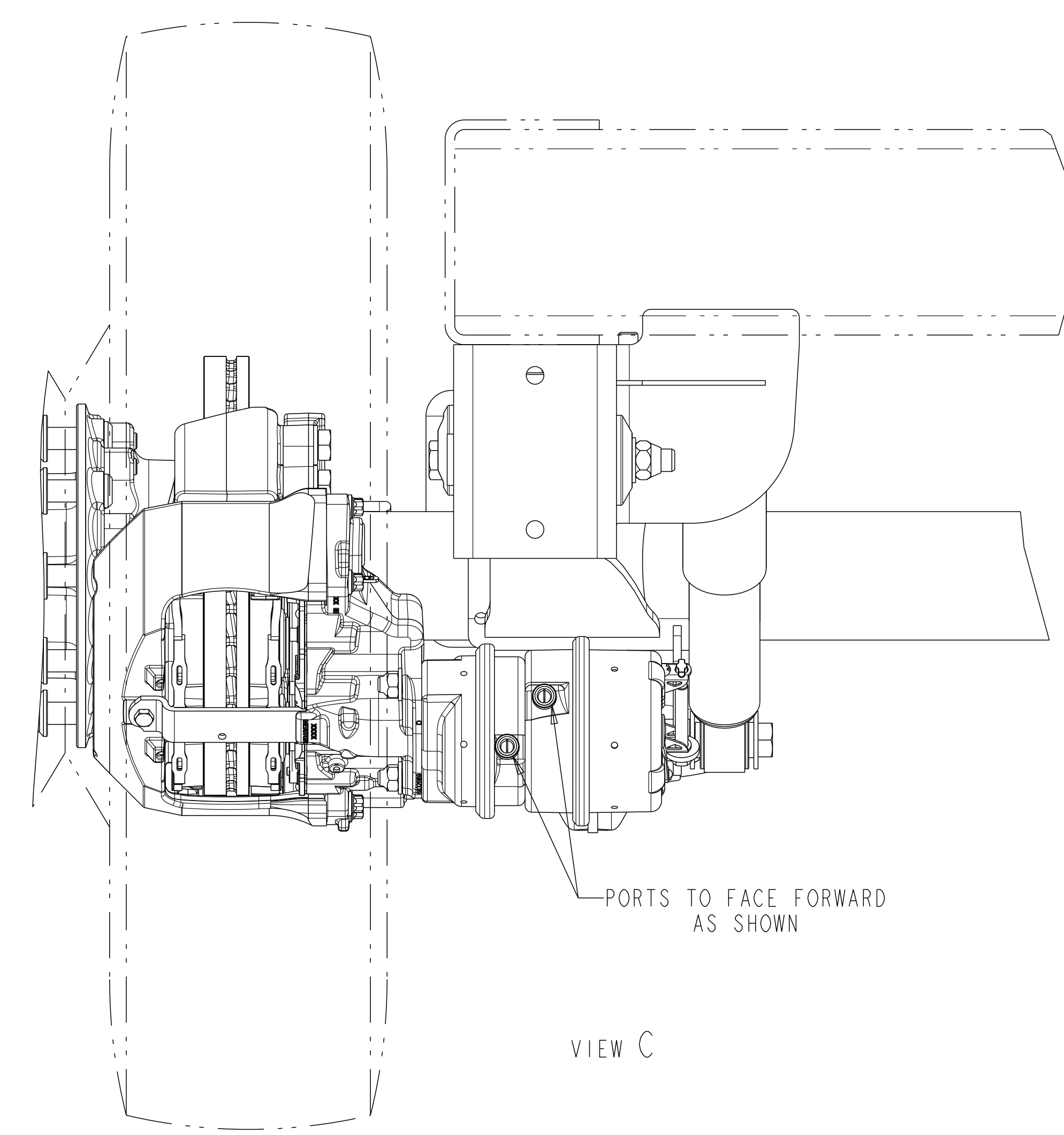
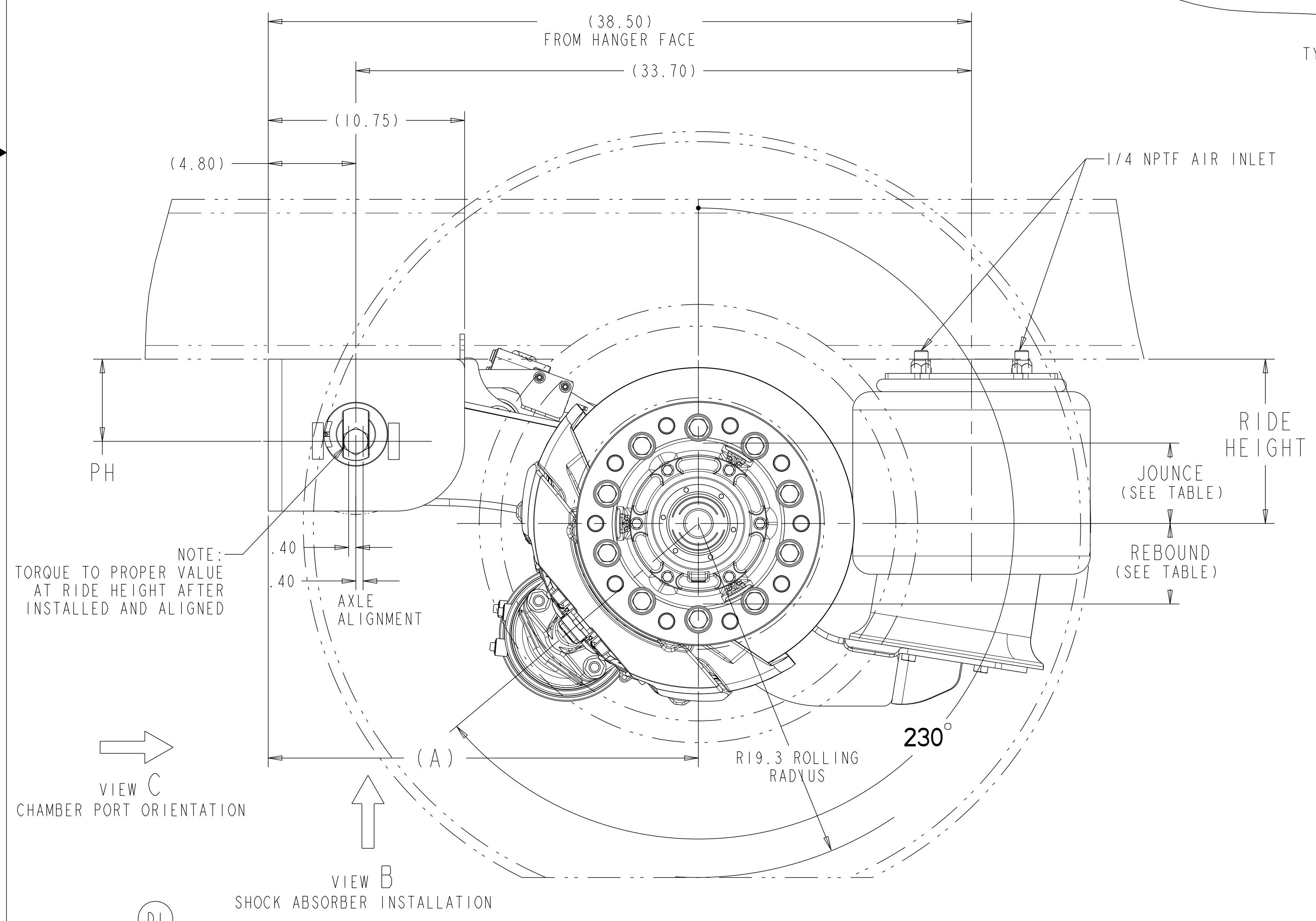
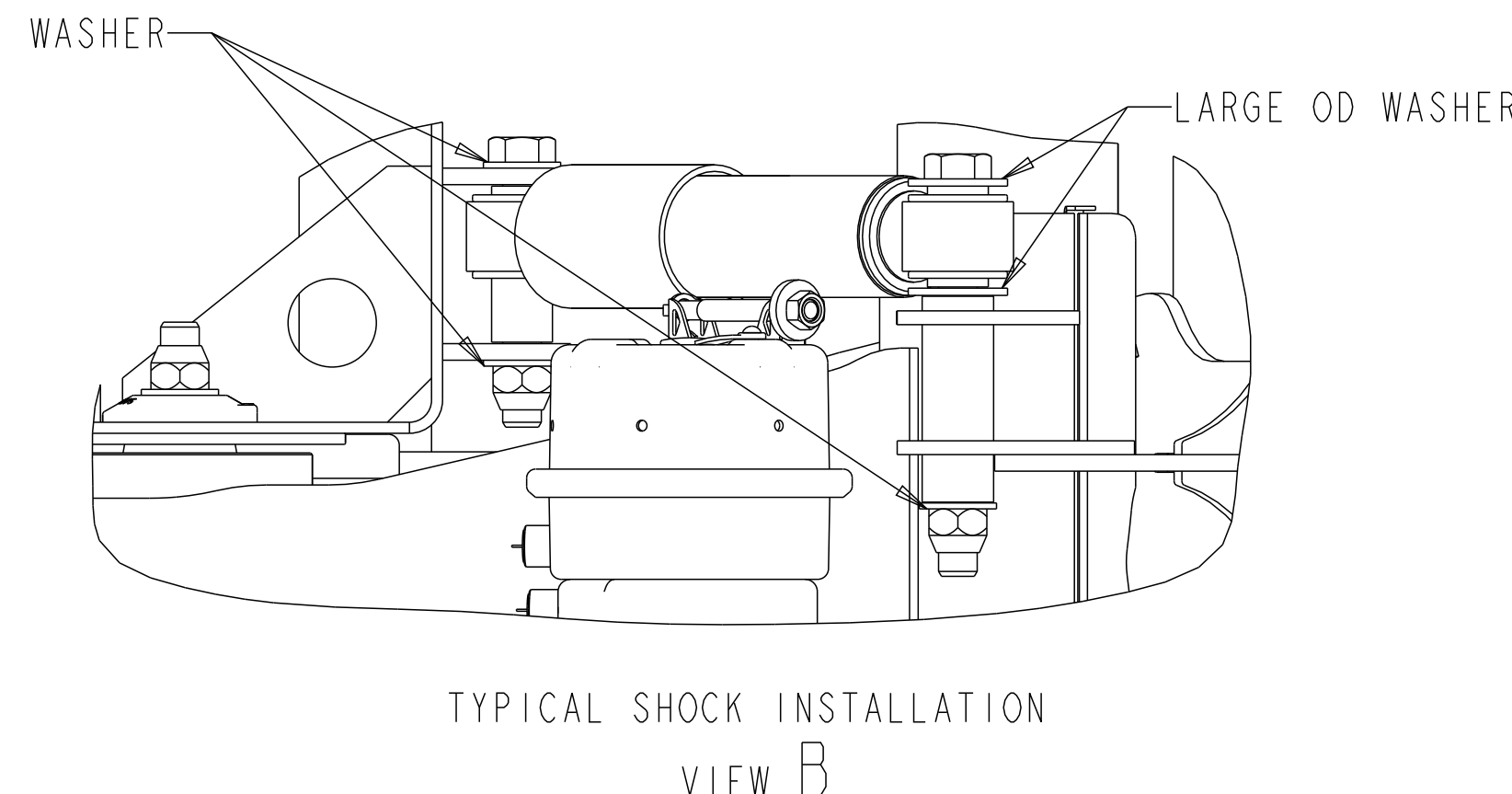
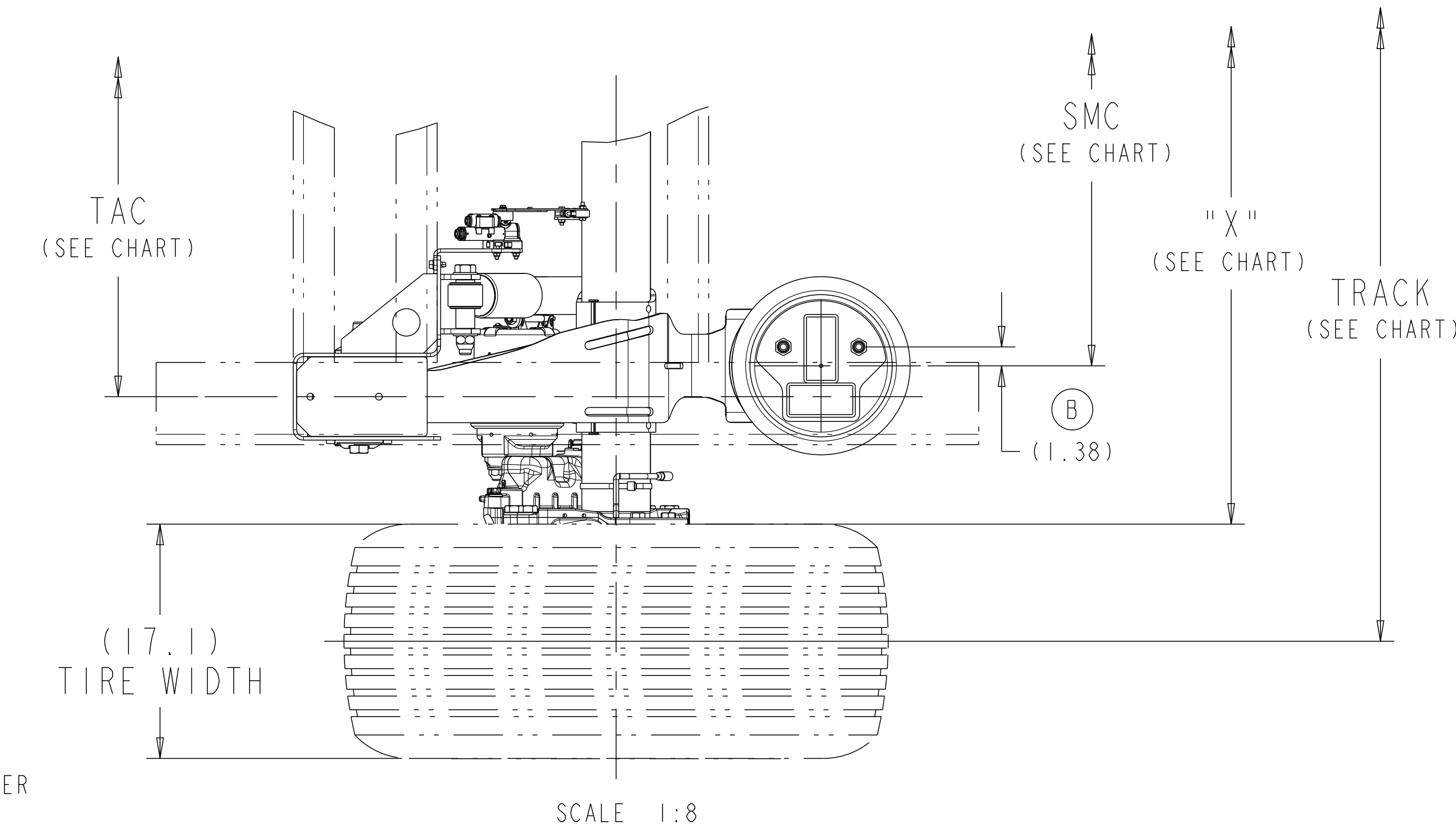
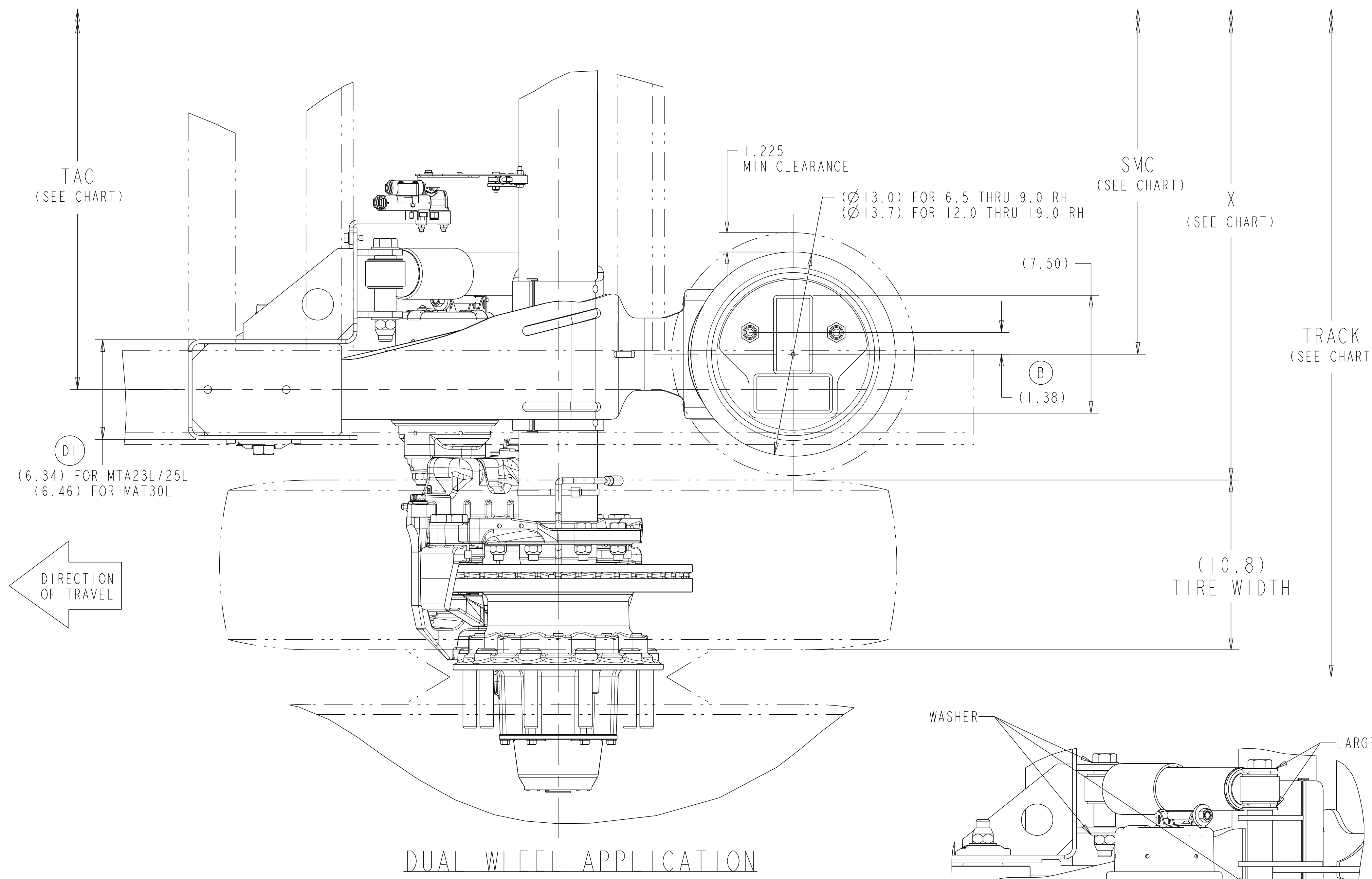


SIM. PARTS			
5-66734U_01			
REVISIONS			
A	RELEASED 5-66734W_01 FOR PRODUCTION.	121656 23-Aug-13	LGS VMR
B	ADDED REF. DIMENSIONS.	122694 28-Oct-13	KHK SKS
C	1-ADDED NOTE REGARDING AIR CHAMBER PORT LOCATION. 2-UPDATED NOTE. 3-UPDATED TABLE TO SHOW COMPLETE PART NUMBERS.	125405 08-Dec-14	SD ARS
D	1-ADDED MTA23L INFORMATION 2-CORRECTED ROADSIDE AND CURBSIDE EX225 BRAKE PART NUMBERS	ECN-144195 19-MAR-19	VMJ SRB

APPLICATION	STD TRACK REF	X REF	SMC	TAC
DUAL WHEEL	71.5	46.4	30.5	35.0
DUAL WHEEL	77.5	52.4	36.5	41.0
● SUPER SINGLE	83.5	66.4	42.5	47.0



CAD FILES		
FILE NAME	REV	VER
DRAWING 5-66734W	D.8	
ASSEM 5-66734W	D.5	

PH	RIDE HEIGHT		JOUNCE	REBOUND	A
	MTA23L/25L	MTA30L			
4.5	6.5	-	1.9	5.3	23.98
	7.5	-	2.9	4.3	23.85
	8	-	3.4	3.8	23.76
	9	9	4.4	4.3	23.55
9.0	12	12	4.9	4.3	23.85
	14	14	5.5	3.5	23.42
	15	15	5.2	3.4	23.13
	16	16	5.4	3.9	23.85
13.0	17	17	5.6	3.6	23.66
	19	19	5.3	3.4	23.13

NOTES:

PROPER VEHICLE FRAME DESIGN IN THE AREA OF SUSPENSION ATTACHMENT IS THE RESPONSIBILITY OF THE INSTALLER.

(D1) SUSPENSION SERIES: MTA23L / MTA25L / MTA30L

SUSPENSION STATIC DESIGN CAPACITY = 23,000 LBS (MTA23L)
25,000 LBS (MTA25L)
30,000 LBS (MTA30L)

(●) RATING BASED ON APPLICATION APPROVAL

RATINGS FOR THE COMPONENTS WITHIN AN INDIVIDUAL MERITOR SUPPLIED SUSPENSION ASSEMBLY, INCLUDING BRAKES, HUBS AND BEARINGS MAY VARY AND MAY NOT BE EQUAL TO THE NOMINAL SUSPENSION RATING.

NO WELDING OR DRILLING ALLOWED ON TRAILING ARMS

AT SERVICE PRIOR TO REMOVAL OF UPPER SHOCK BOLT, RIDE HEIGHT CONTROL VALVE ASSEMBLY SHOULD BE REMOVED

FOR FINAL INSTALLATION TO TRAILER REFER TO 5-66733G-01

REFER TO SHOP CHART 4-60559_38 FOR TORQUE INFORMATION

DATA BASED ON:
DUAL: TIRE SIZE: 11R22.5
WHEEL OFFSET: 6.62"
SINGLE: TIRE SIZE: 445/50R22.5
WHEEL OFFSET: .56"

DISC BRAKE INFORMATION (BAF)			
COMPONENT	ROAD SIDE	CURB SIDE	
(C3) EX225L BRAKE	EX225L201CD000S	EX225L202CD000S	
(D2) EX225H BRAKE	EX225H201CD000S	EX225H202CD000S	
(C1) TORQUE PLATE	3215P1810	3215Q1811	

(C1) FOR AIR CHAMBER PORT LOCATION SEE LAYOUT 4-40072A-01

(D1) MTA23L / 25L / 30L WITH EX225 DISC BRAKE FOR WELD ON HANGER APPLICATION SHOWN AT 9.0 RH AIR CHAMBER CLOCKING 230°

APPLY SPECIFIED MERITOR MARKINGS PER DRAFTING ENGINEERING STANDARDS 0-004	THIS PRINT IS LOANED ON A CONFIDENTIAL BASIS SUBJECT TO RETURN UPON DEMAND BY MERITOR AND NOTHING HEREON MAY BE REPRODUCED, USED OR DISCLOSED IN WHOLE OR IN PART WITHOUT THE PRIOR WRITTEN PERMISSION OF MERITOR.	MATERIAL	SEE BILL OF MATERIALS FOR SPECIFIC INDIVIDUAL MODEL INFORMATION				DRAWING SIZE E	SCALE 1:4	DESIGN CONTROL GROUP W W TRAILER PRODUCTS	PART NO. 5-66734W-01	EDC 11707
			PROCESS	APPROVED	DRAWN BY	CHECKED BY					
4 IN. 10THS. WEIGHT RGH./FIN.		INDUSTRY NO.	APPROVED	L.G.S	V.M.R	L.G.S	30-May-13	MERITOR INCH		PAGE 1 OF 1	
1 2 3 4 5 6 7 8 9 10 11 12 13 14 15 16 17 18 19 20 21 22 23 24 25 26 27 28 29 30 31 32 33 34 35 36 37 38 39 40 41 42 43 44 45 46 47 48 49 50 51 52 53 54 55 56 57 58 59 60 61 62 63 64 65 66 67 68 69 70 71 72 73 74 75 76 77 78 79 80 81 82 83 84 85 86 87 88 89 90 91 92 93 94 95 96 97 98 99 100		INDUSTRY NO.	APP. NO.	C.R./T.E. NO.	ORIGINAL FOR	SCALE	DESIGN CONTROL GROUP	PART NO.			
			PCCR 119179-B01		MTA 23L / 25L / 30L						

DO NOT CHANGE MANUALLY