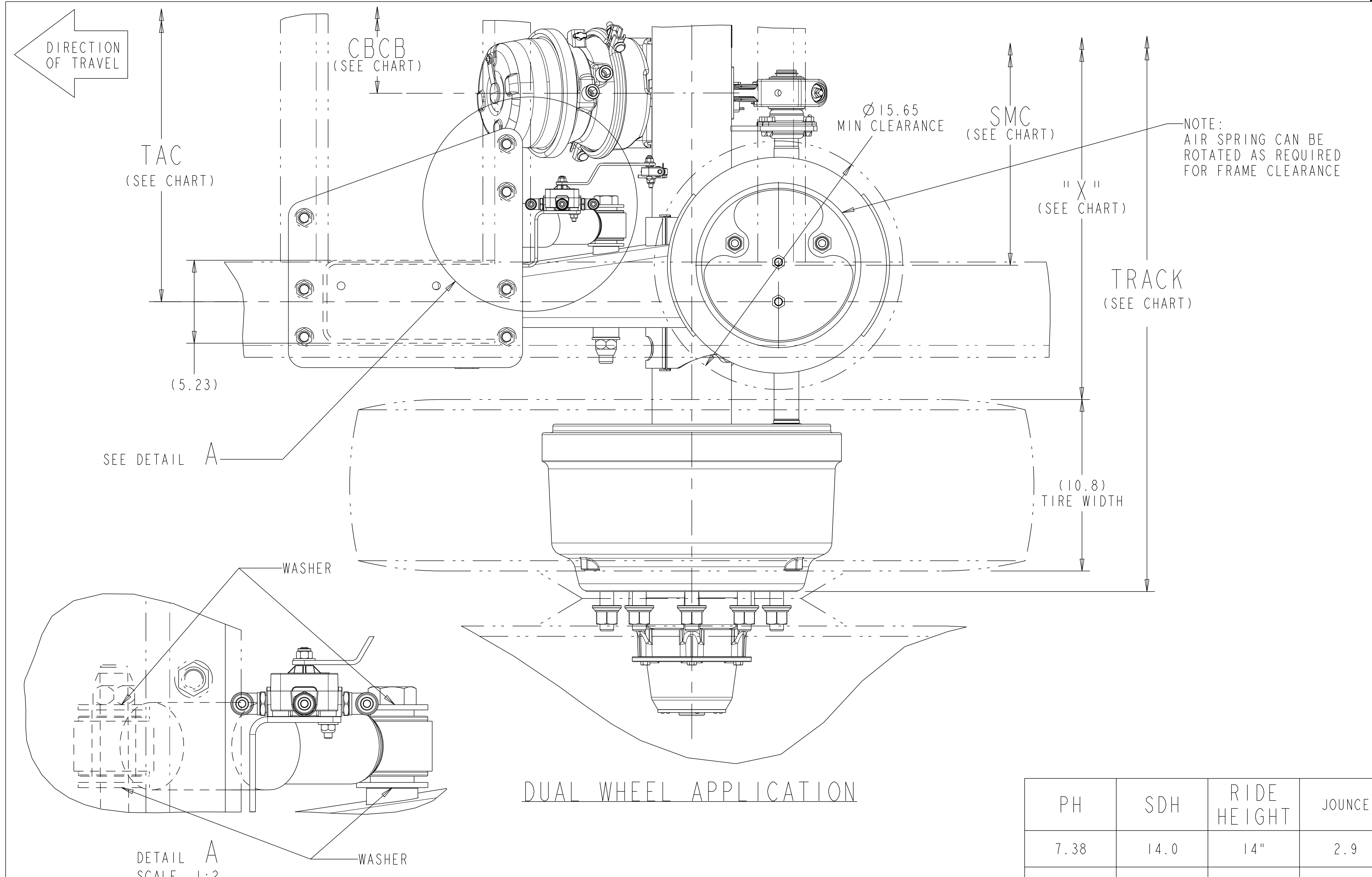
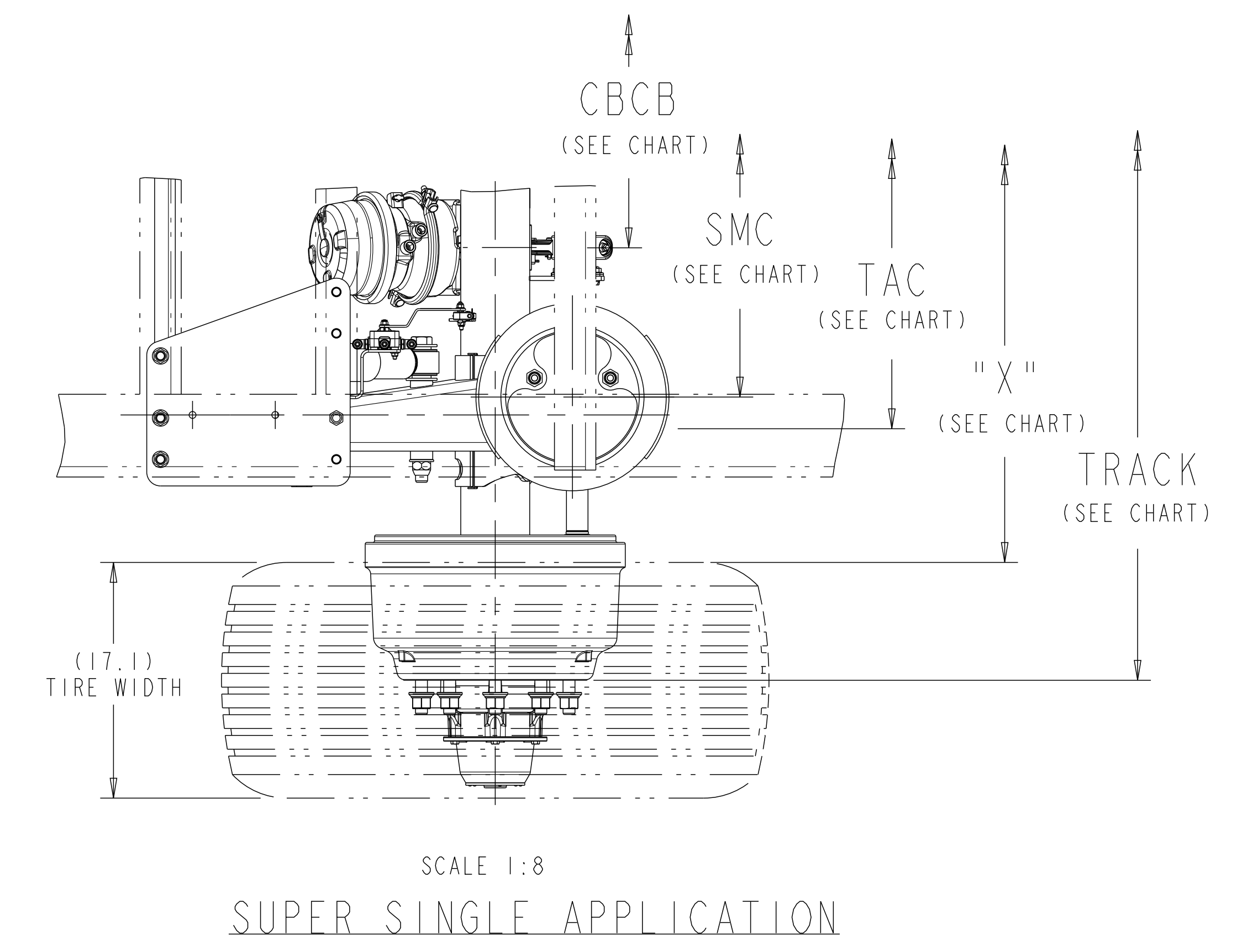
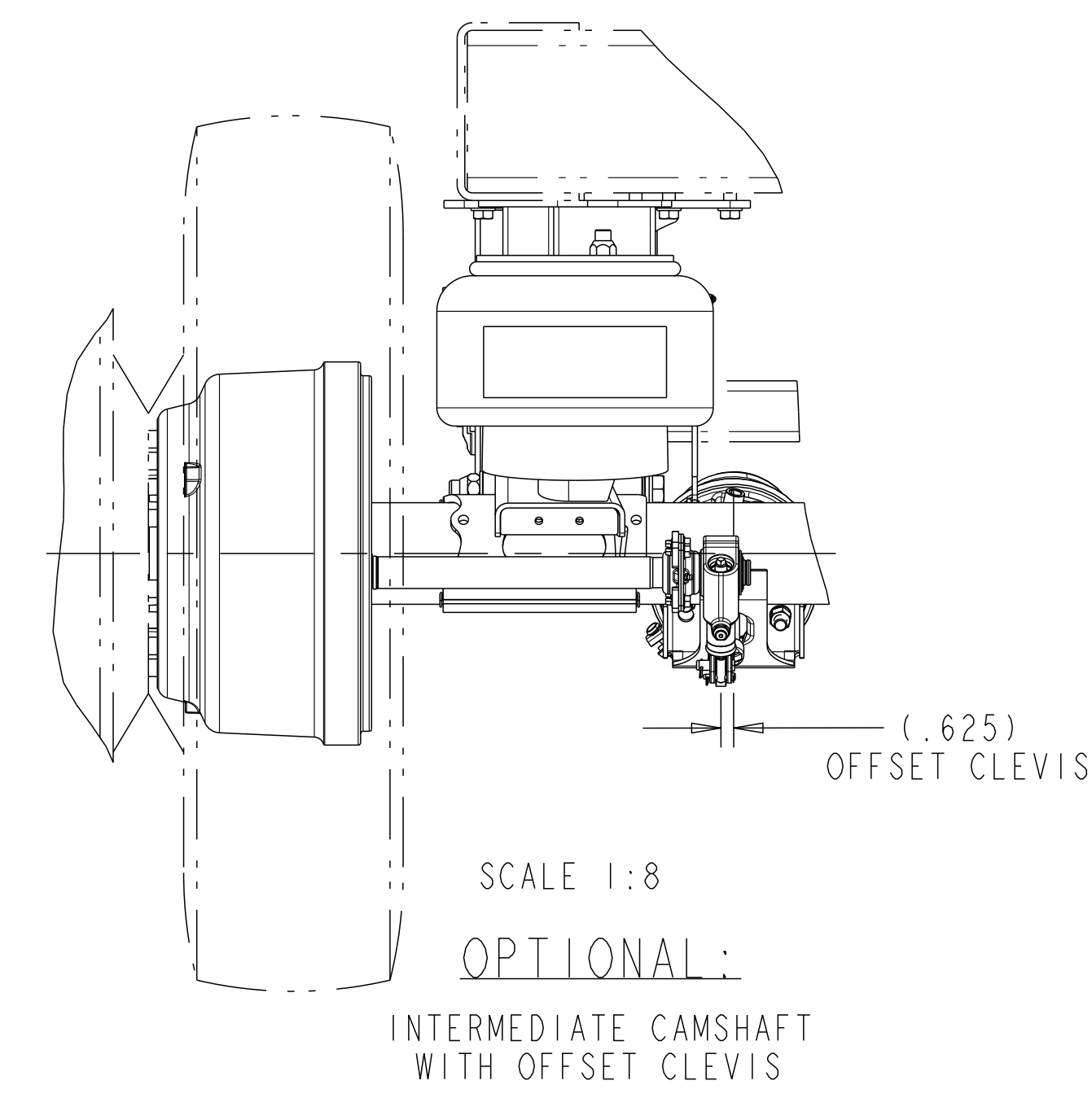


Revision: J.9
 STATE: Engineering Released
 EXPORT_CONTROL: HARD_WARE=EAR - EAR99, EXPORT_CONTROL=EAR - EAR99

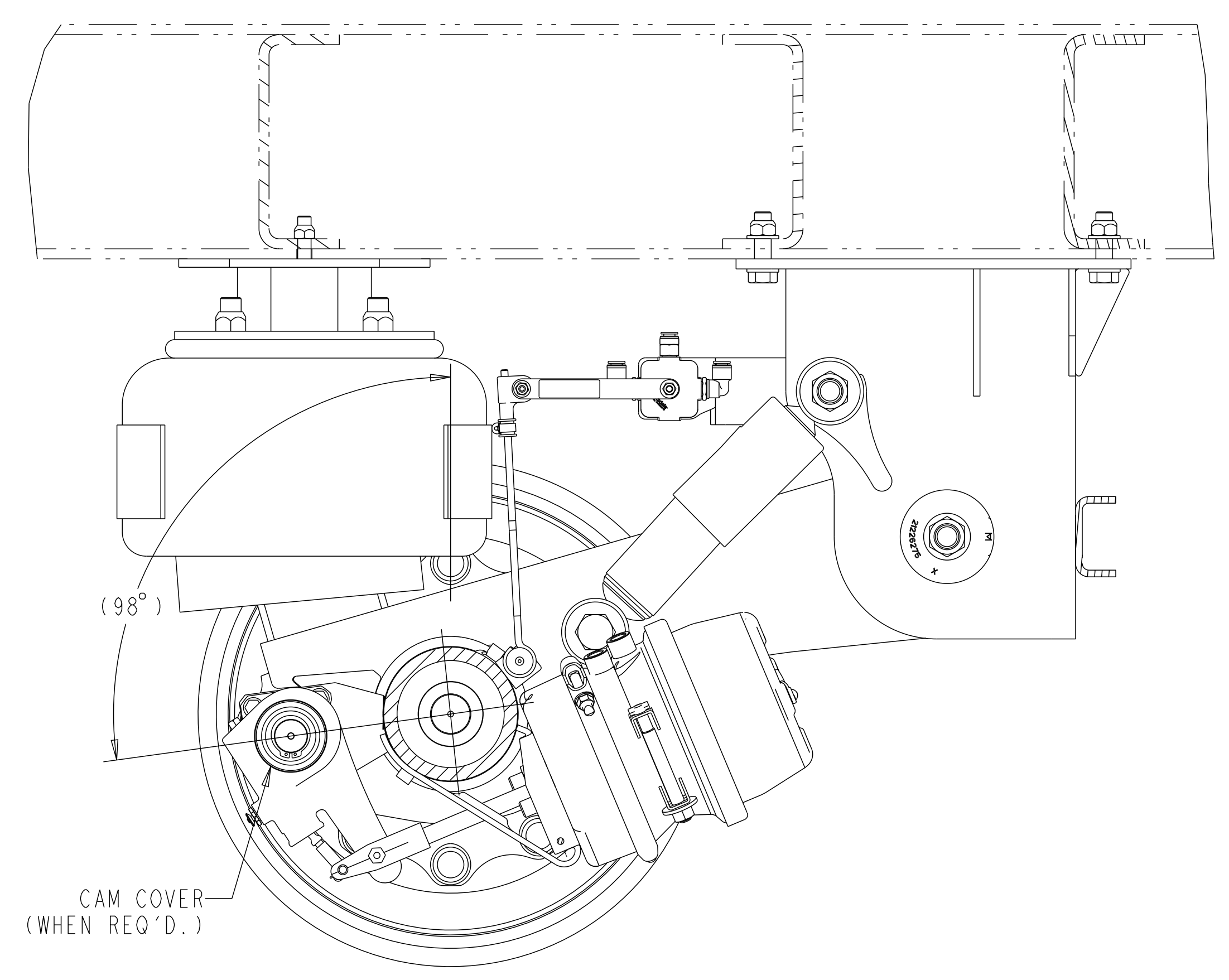
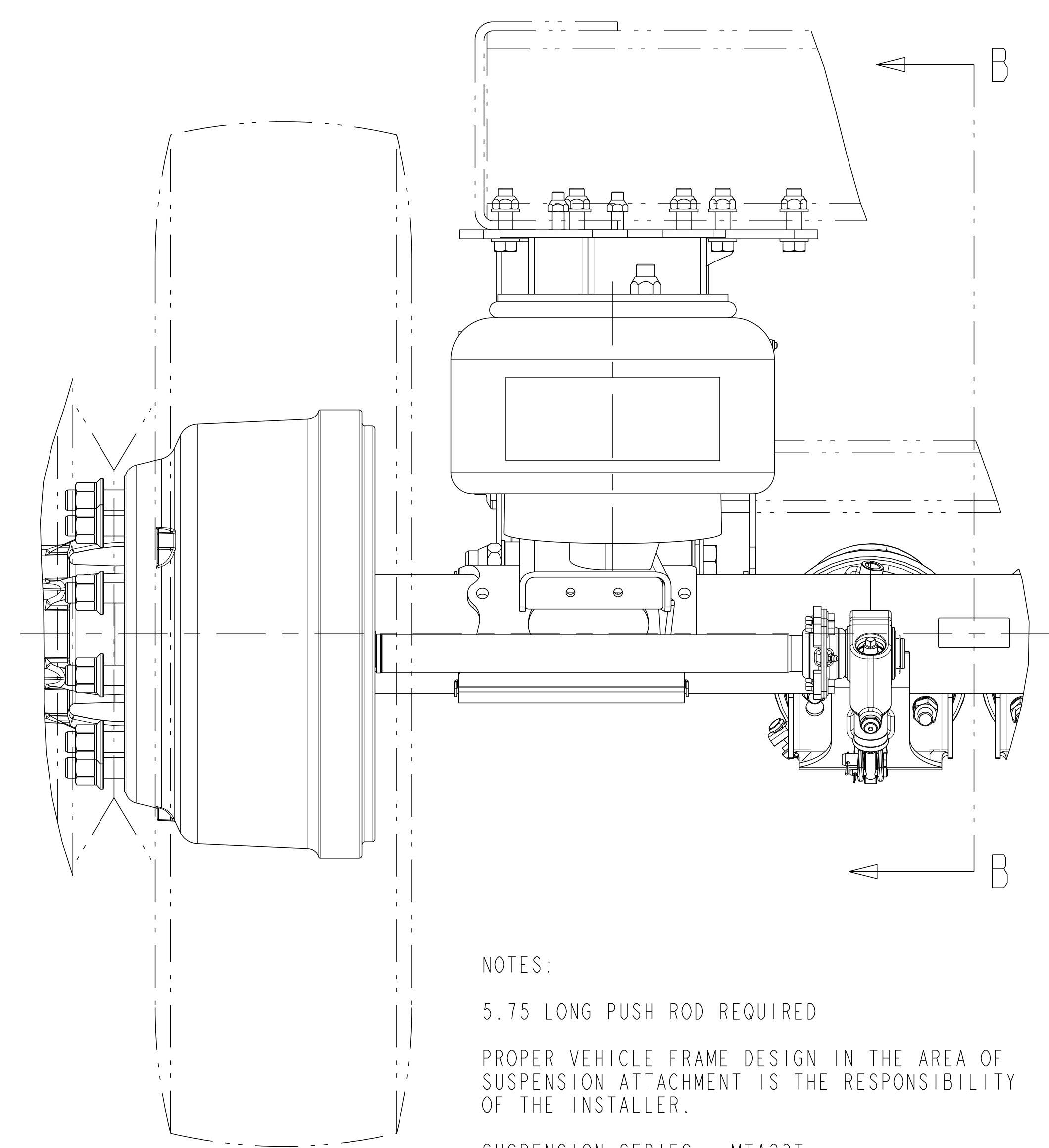
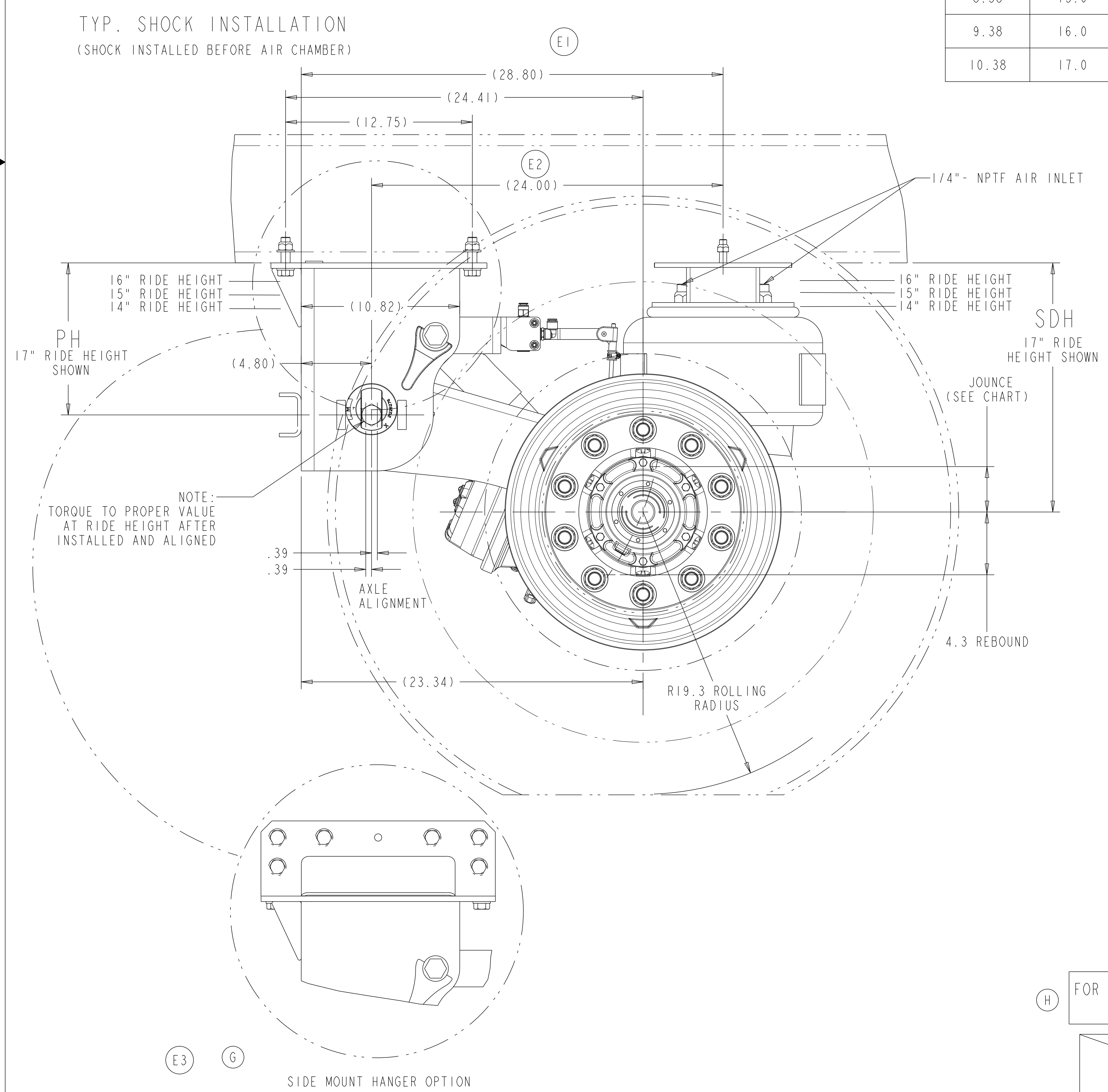


APPLICATION	STD TRACK REF	CAM CLOCKING	"X" REF	CBCB REF	SMC	TAC
DUAL WHEEL	77.5	BAR-99°	52.4	14.71	36.4	41.0
DUAL WHEEL	71.5	BAR-99°	46.4	8.71	30.4	35.0
● SUPER SINGLE	83.5	BAR-99°	66.4	20.71	42.4	47.0

SIM. PARTS 5-66240A_01			
REVISIONS			
E	1) WAS 28.69, 2) WAS 23.89 3) REMOVED REF. HOLE PATTERN, NOW SHOWN ON 5-66241AG_01, 4) WAS 1/2" FROM TOOLING HOLE	115875 10/10/11	CH SS
F	ADDED PAGE-2 WITH CAMS FRONT DETAILS.	118233 30-Mar-12	DP SVM
G	ADDED SIDE MOUNT HANGER VIEW	121032 03/11/13	CH SS
H	ADDED AIR CHAMBER PORT LOCATION NOTE	123868 04-Apr-14	SD RS
J	UPDATED RHC REPRESENTATION	ECN-165357 28-JUL-20	EN SD



PH	SDH	RIDE HEIGHT	JOUNCE
7.38	14.0	14"	2.9
8.38	15.0	15"	2.9
9.38	16.0	16"	3.1
10.38	17.0	17"	3.1



NOTES:
 5.75 LONG PUSH ROD REQUIRED
 PROPER VEHICLE FRAME DESIGN IN THE AREA OF SUSPENSION ATTACHMENT IS THE RESPONSIBILITY OF THE INSTALLER.
 SUSPENSION SERIES: MTA23T
 SUSPENSION STATIC DESIGN CAPACITY = 23,000 LBS
 ● RATING BASED ON APPLICATION APPROVAL
 RATINGS FOR THE COMPONENTS WITHIN AN INDIVIDUAL BASIS SUBJECT TO RETURN UPON DEMAND BY MERITOR AND NOTHING HEREON MAY BE REPRODUCED, USED OR DISCLOSED IN WHOLE OR IN PART WITHOUT THE PRIOR WRITTEN PERMISSION OF MERITOR.

FOR FINAL INSTALLATION TO TRAILER REFER TO 5-66240L_01 & 5-66241AG_01
 REFER TO SHOP CHART 4-60559_37 FOR TORQUE INFORMATION
 DATA BASED ON:
 DUAL: TIRE SIZE: 11R22.5
 WHEEL OFFSET: 6.62
 SINGLE: TIRE SIZE: 445/50R22.5
 WHEEL OFFSET: .56

FOR CAMS FRONT DETAILS SEE PAGE 2

● FOR AIR CHAMBER PORT LOCATION SEE LAYOUT 4-40072_01

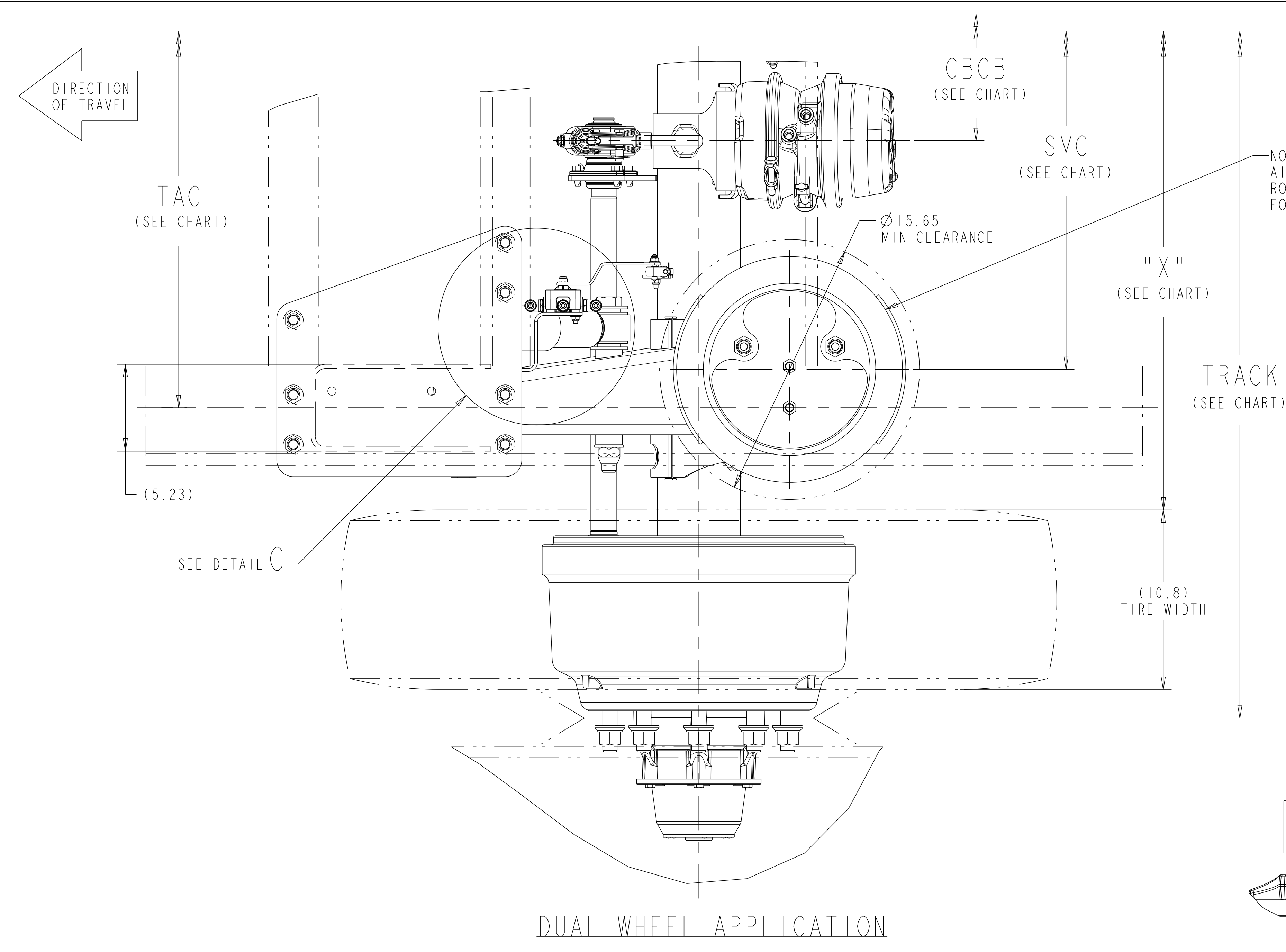
● NO WELDING OR DRILLING ALLOWED ON TRAILING ARMS. NO WELD WITHIN .25" OF FRAME BRACKET TOOLING HOLES.

FILE NAME	REV. VER
5-66241R	J.9
5-66241R	J.9

APPLY SPECIFIED MERITOR MARKINGS PER DRAFTING ENGINEERING STANDARDS D-004		THIS PRINT IS LOANED ON A CONFIDENTIAL BASIS SUBJECT TO RETURN UPON DEMAND BY MERITOR AND NOTHING HEREON MAY BE REPRODUCED, USED OR DISCLOSED IN WHOLE OR IN PART WITHOUT THE PRIOR WRITTEN PERMISSION OF MERITOR.		MATERIAL		SEE BILL OF MATERIAL FOR SPECIFIC INDIVIDUAL MODEL INFORMATION		PART/DWG NO. 5-66241R-01		EDC 00050	
PROJ. ENG. S.S.		APPROVED		DRAWN BY H.N. 08-Jun-09		CHECKED BY C.H. 08-Jun-09		DRAWING SCALE E		PAGE 1 OF 2	
C.H. 08-Jun-09		DCR 116105-008		ORIGINAL FOR MTA23T		SCALE 1:4		DESIGN CONTROL GROUP W.W. TRAILER PRODUCTS		PART NO.	

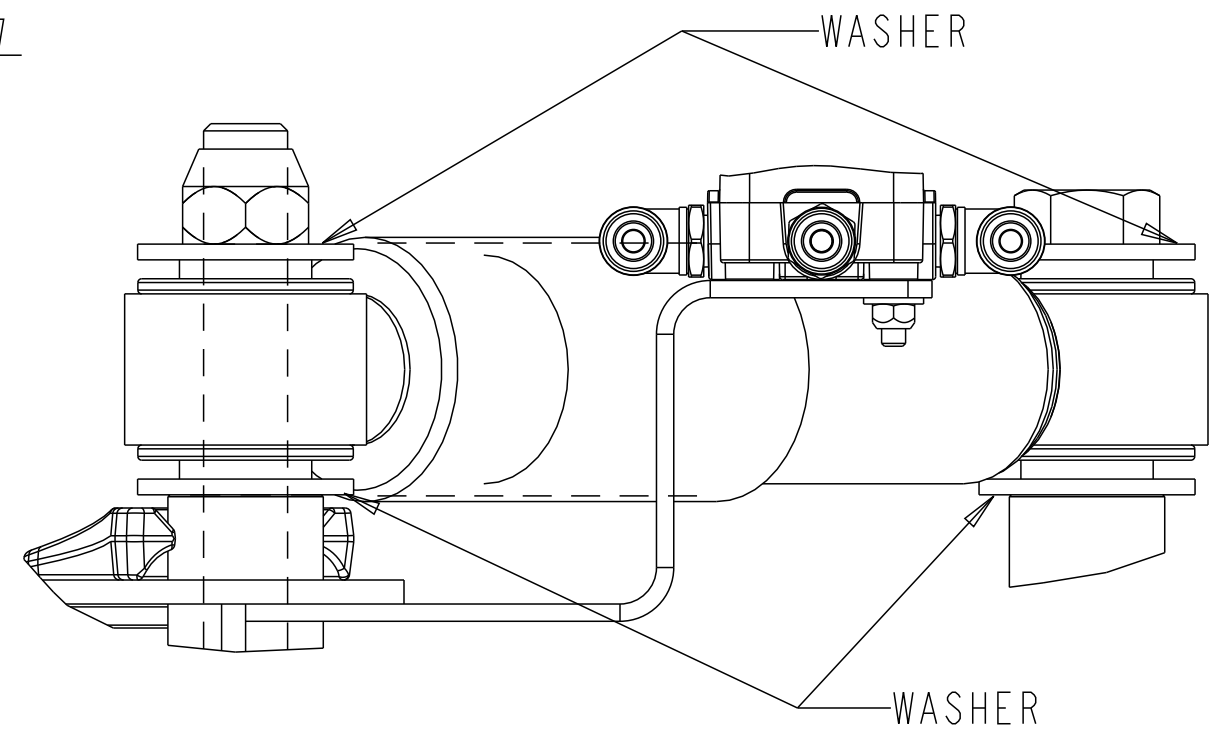
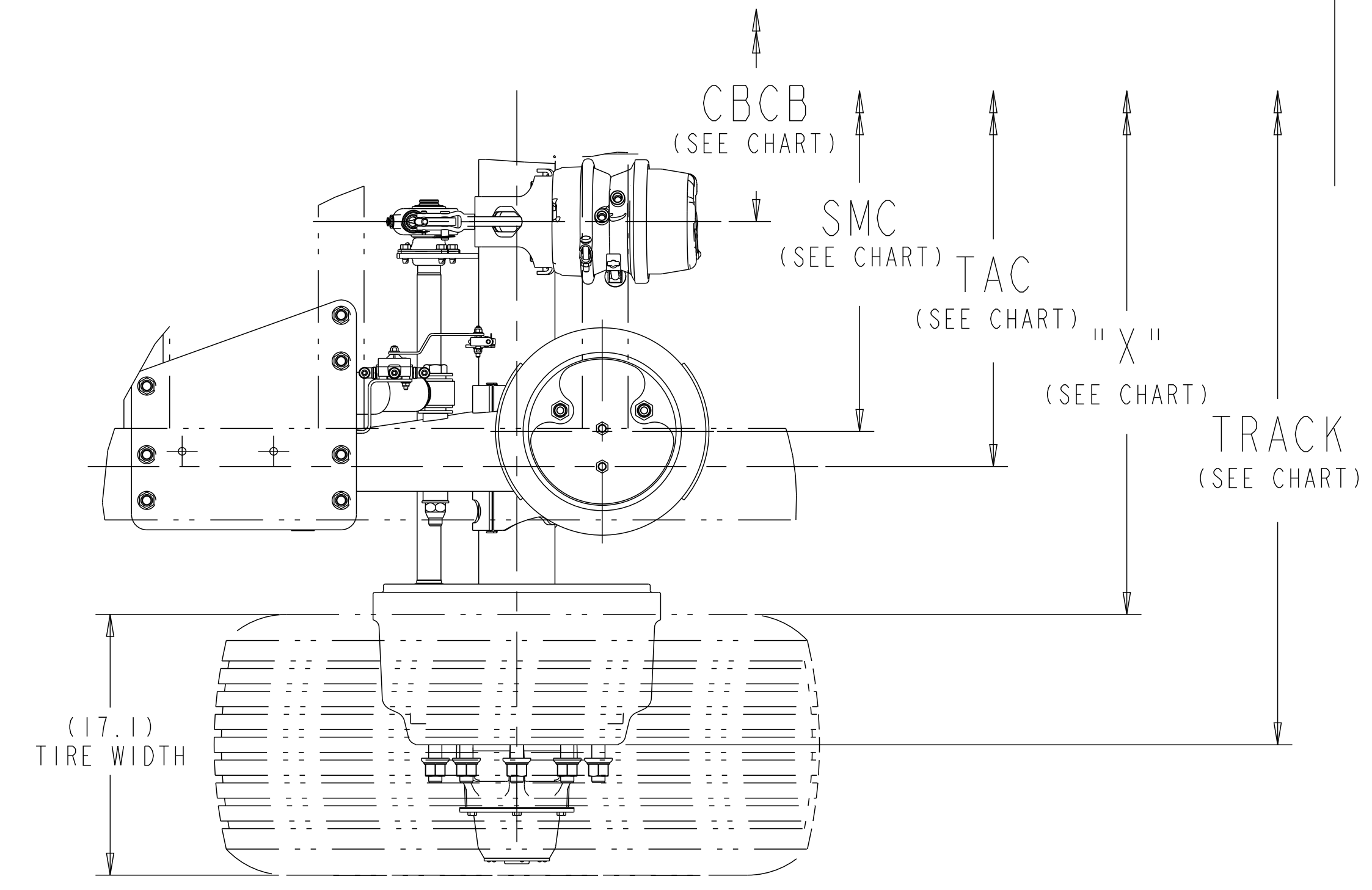
DO NOT CHANGE MANUALLY

Revision: J.9
 STATE: Engineering Released
 EXPORT_CONTROL: HARD_WARE=EAR - EAR99, EXPORT_CONTROL=EAR - EAR99

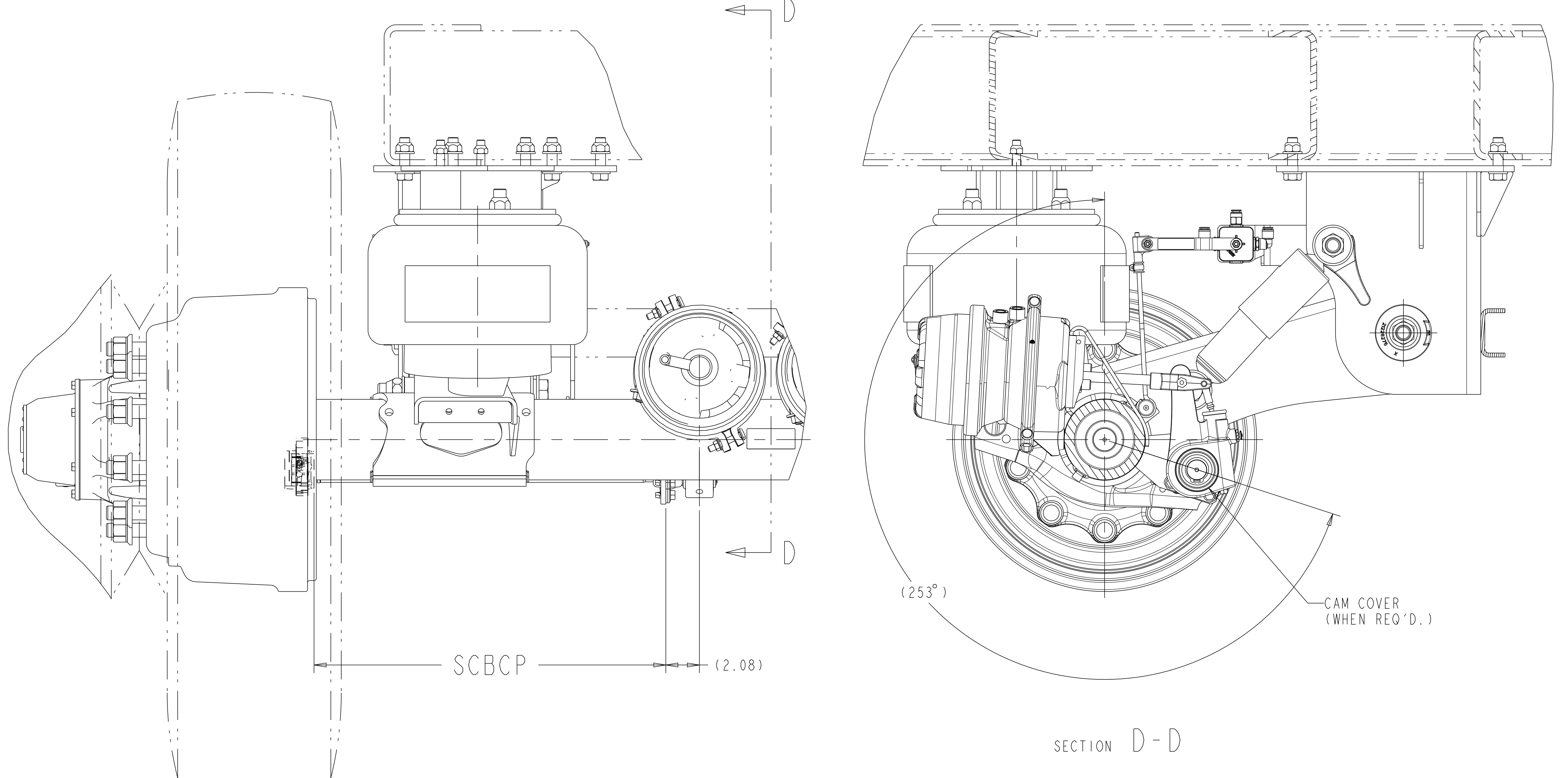
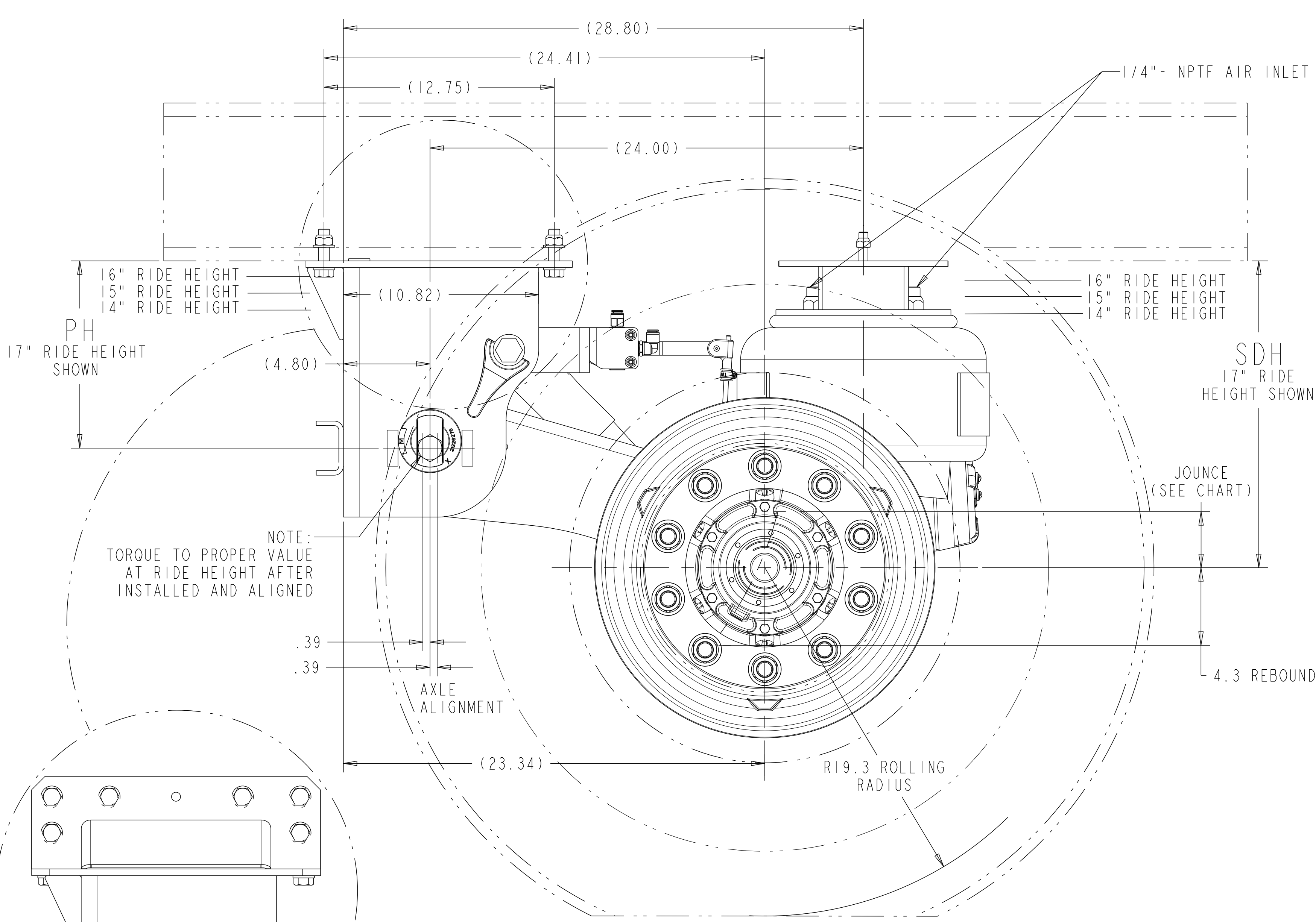


APPLICATION	STD TRACK REF	CAM CLOCKING	"X" REF	CBCB REF	SMC	TAC
DUAL WHEEL	77.5 MIN	BAF-253°	52.4	8.89	36.4	41.0
● SUPER SINGLE	83.5	BAF-253°	66.4	14.89	42.4	47.0

SIM PARTS		
REVISIONS		
F	ADDED PAGE-2 WITH CAMS FRONT DETAILS.	118233 30-Mar-12 DP SVM
G	ADDED SIDE MOUNT HANGER VIEW	121032 03/07/13 CH SS
H	ADDED AIR CHAMBER PORT LOCATION NOTE	123868 04-Apr-14 SD RS
J	UPDATED RHCV REPRESENTATION	ECN-165357 28-JUL-20 EN SD



CAD FILES	
NAME	TYPE
5-66241R J.9	DRAWING
5-66241R J.9	MODEL



NOTES:

5.75 LONG PUSH ROD REQUIRED

PROPER VEHICLE FRAME DESIGN IN THE AREA OF SUSPENSION ATTACHMENT IS THE RESPONSIBILITY OF THE INSTALLER.

SUSPENSION SERIES: MTA23T

SUSPENSION STATIC DESIGN CAPACITY = 23,000 LBS

● RATING BASED ON APPLICATION APPROVAL

RATINGS FOR THE COMPONENTS WITHIN AN INDIVIDUAL MERITOR SUPPLIED SUSPENSION ASSEMBLY, INCLUDING BRAKES, HUBS, AND BEARINGS, MAY VARY AND MAY NOT BE EQUAL TO THE NOMINAL SUSPENSION RATING.

NO WELDING OR DRILLING ALLOWED ON TRAILING ARMS. NO WELD WITHIN .25" OF FRAME BRACKET TOOLING HOLES.

FOR FINAL INSTALLATION TO TRAILER REFER TO 5-66240L_01 & 5-66241AG_01

REFER TO SHOP CHART 4-60559_37 FOR TORQUE INFORMATION

RESTRICTIONS FOR CAMS FRONT APPLICATION:

1. MINIMUM TRACK VALUE SHOULD BE 77.5"
2. LIFT KIT CANNOT BE PACKAGED
3. MINIMUM SCBCP VALUE SHOULD BE 21.83"

DATA BASED ON:
 DUAL: TIRE SIZE: 11R22.5
 WHEEL OFFSET: 6.62
 SINGLE: TIRE SIZE: 445/50R22.5
 WHEEL OFFSET: .56

PH	SDH	RIDE HEIGHT	JOUNCE
7.38	14.0	14"	2.9
8.38	15.0	15"	2.9
9.38	16.0	16"	3.1
10.38	17.0	17"	3.1

● FOR AIR CHAMBER PORT LOCATION SEE LAYOUT 4-40072_01

APPLY SPECIFIED MERITOR MARKINGS PER DRAFTING ENGINEERING STANDARDS D-004

THIS PRINT IS LOANED ON A CONFIDENTIAL BASIS SUBJECT TO RETURN UPON DEMAND BY MERITOR AND NOTHING HEREON MAY BE REPRODUCED, USED OR DISCLOSED IN WHOLE OR IN PART WITHOUT THE PRIOR WRITTEN PERMISSION OF MERITOR.

MATERIAL

PROCESS

INQUIRY NO.

CHECKED BY: S.V.M. 19-Mar-12

APPROVED: D.P. 19-Mar-12

3RD ANGLE PROJECTION

SCALE: 1:4

SEE BILL OF MATERIAL FOR SPECIFIC INDIVIDUAL MODEL INFORMATION

118233 PART/DWG NO. 5-66241R-01 EDC 00050

RELEASE NAME MTA23T SERIES SUSP. GROUP PAGE 2 OF 2

DESIGN CONTROL GROUP W.W. TRAILER PRODUCTS PART NO.

MERITOR INCH

DO NOT CHANGE MANUALLY