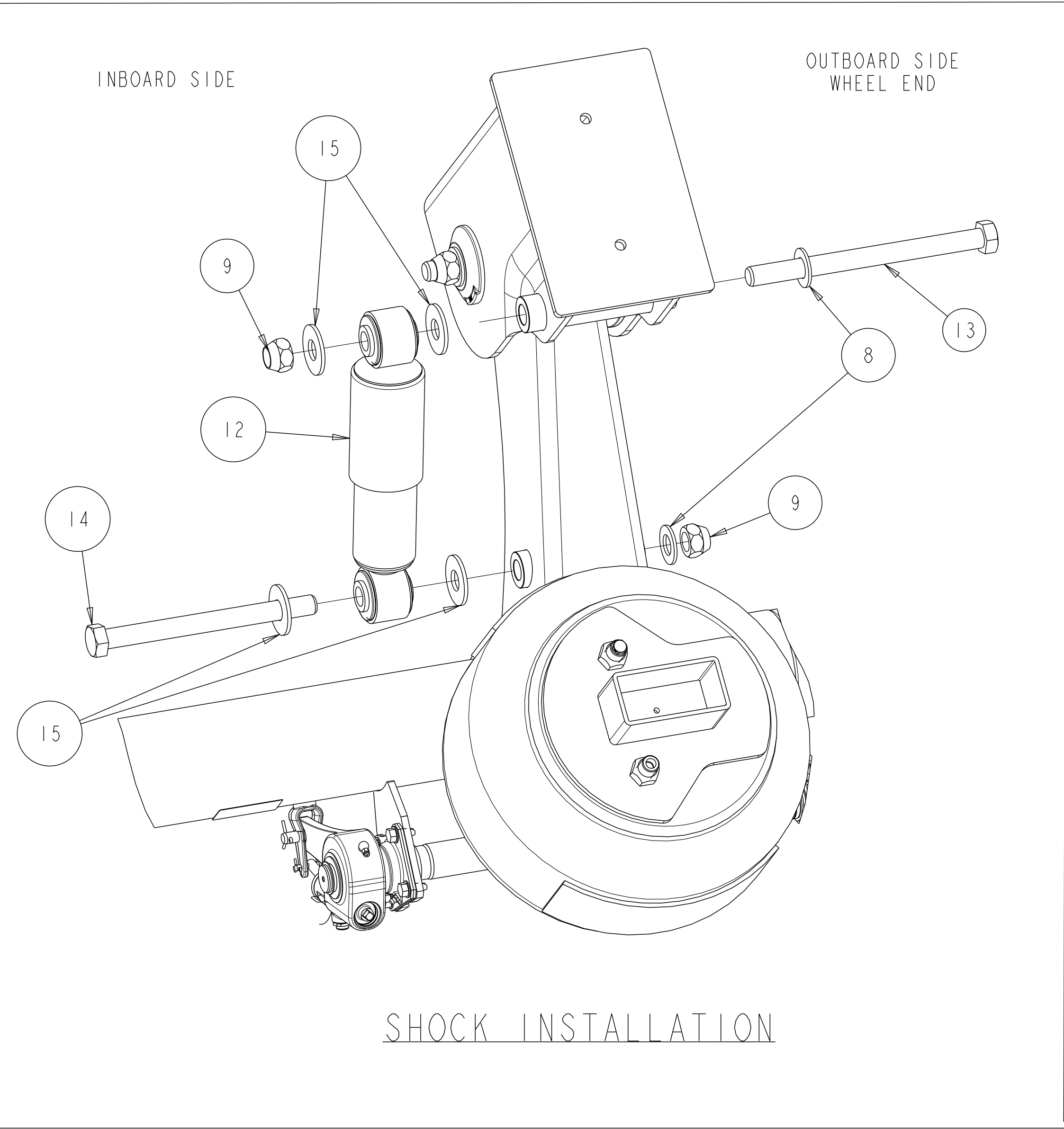
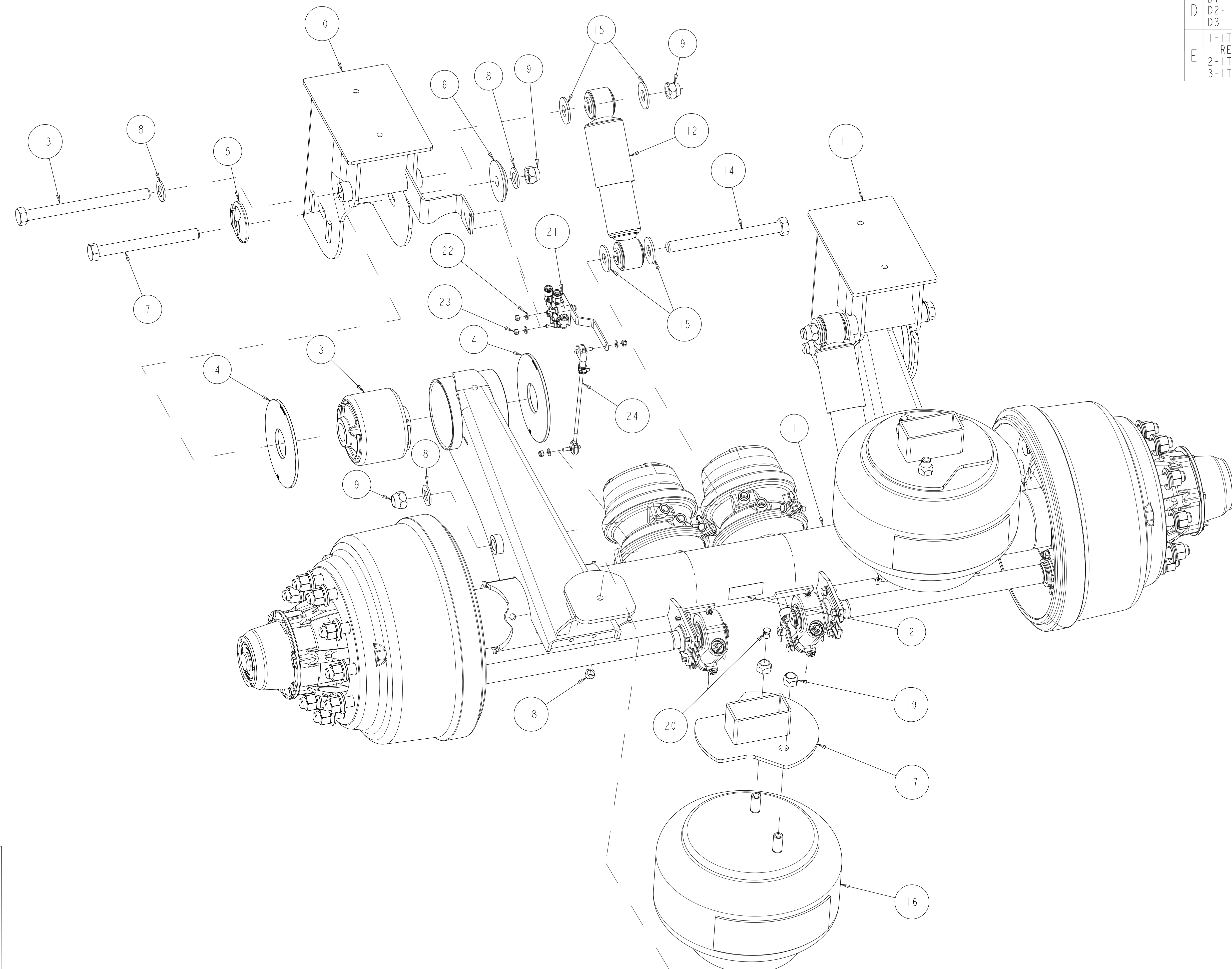


Revision: E.5
 STATE: Engineering Released
 EXPORT_CONTROL: HARD_WARE=EAR - EAR99, EXPORT_CONTROL=EAR - EAR99

ITEM #	PART NAME	PART NUMBER	QTY.
-	LAYOUT - MTA30T TRAILER	5-67937J_01	1
1	AXLE ASSY-TRAILER	SEE BILL OF MATERIAL	1
2	NAME PLATE	2297-T-8652	1
3	PIVOT BUSH MOULDING	A-1225C1537	2
4	WEAR WASHER	21226663	4
5	WASHER ECCENTRIC	21226276	2
6	WASHER SPECIAL	21226275	2
7	SCREW-CAP (.875-9 UNC X 9)	S-21472-M-2	2
8	WASHER-HARDENED	122905295	6
9	NUT (PREVAILING TORQUE)	1227X1766	6
10	FRAME BRKT-LH	SEE BILL OF MATERIAL	1
11	FRAME BRKT-RH	SEE BILL OF MATERIAL	1
12	ABSORBER-SHOCK	A-7805-F-1020	2
13	SCREW-CAP (.875-9 UNC X 11)	S-21488-M-2	2
14	SCREW-CAP (.875-9 UNC X 10)	S-21480-M-2	2
15	WASHER-FLAT	1229R5296	8
16	SPRING-AIR	A-2258-Q-1577	2
17	AIR SPRING PEDESTAL	SEE BILL OF MATERIAL	1
18	NUT-LOCK,FIN	1227-B-1614	2
19	NUT-LOCK,FIN	1227-M-1573	4
20	PLUG	1250H1308	2
21	VALVE-HEIGHT CONTROL	SEE BILL OF MATERIAL	1
22	WASHER-FLAT	WA-34	2
23	NUT-LOCK,FIN.	NL-24-1	2
24	LINKAGE-HEIGHT CONTROL	A-1245X1220	1

D1
 D2
 C2
 C1
 D3
 E3
 E1
 B
 E2



5-67937G_01			
REVISIONS			
A	RELEASED 5-67937J_01 FOR PRODUCTION.	109918 10/05/10	CH HN
B	NUT WAS NL-24-M-1	116764 09/07/11	CH SS
C	C1- CORRECTED EXPLODED VIEW AND TABLE TO REMOVE ITEM#12 (BRKT,FIN), SINCE HCW BRACKET IS WELDED TO ITEM #10 (FRAME BRKT-LH) C2- REMOVED ITEM #10 (PLATE-BACKING) AND UPDATED TABLE	122507 21-Nov-13	KHK SKS
D	D1- 122905295 WAS 200259-6 D2- 1227X1766 WAS 1227R1604 D3- 1229R5296 WAS 1229M4979	ECN-137447 02-08-17	JMK VL
E	1- ITEM #21 UPDATED RHCV REPRESENTATION 2- ITEM #24 PN WAS 203159-5 3- ITEM #20 QTY WAS 4	ECN-167907 15-JUN-20	VMJ SD

CAD FILES		
FILE NAME	REV	VER
DRAWING 5-67937J	E.4	
ASSEM 5-67937J	E.4	

109918	PART/DWG NO. 5-67937J_01	EDC 00050
RELEASE	NAME LAYOUT - MTA30T TRAILER	PAGE 1 OF 1
APPROVED S.S.		DRAWN BY H.N. 19-Feb-10
CHECKED BY C.H. 19-Feb-10		3RD ANGLE PROJECTION
C.H. 19-Feb-10 PCCR 117266		ORIGINAL FOR MTA30T
SCALE 1:4		DESIGN CONTROL GROUP W W TRAILER PRODUCTS
PART NO. MTA30T		PART NO. W W TRAILER PRODUCTS

DO NOT CHANGE MANUALLY