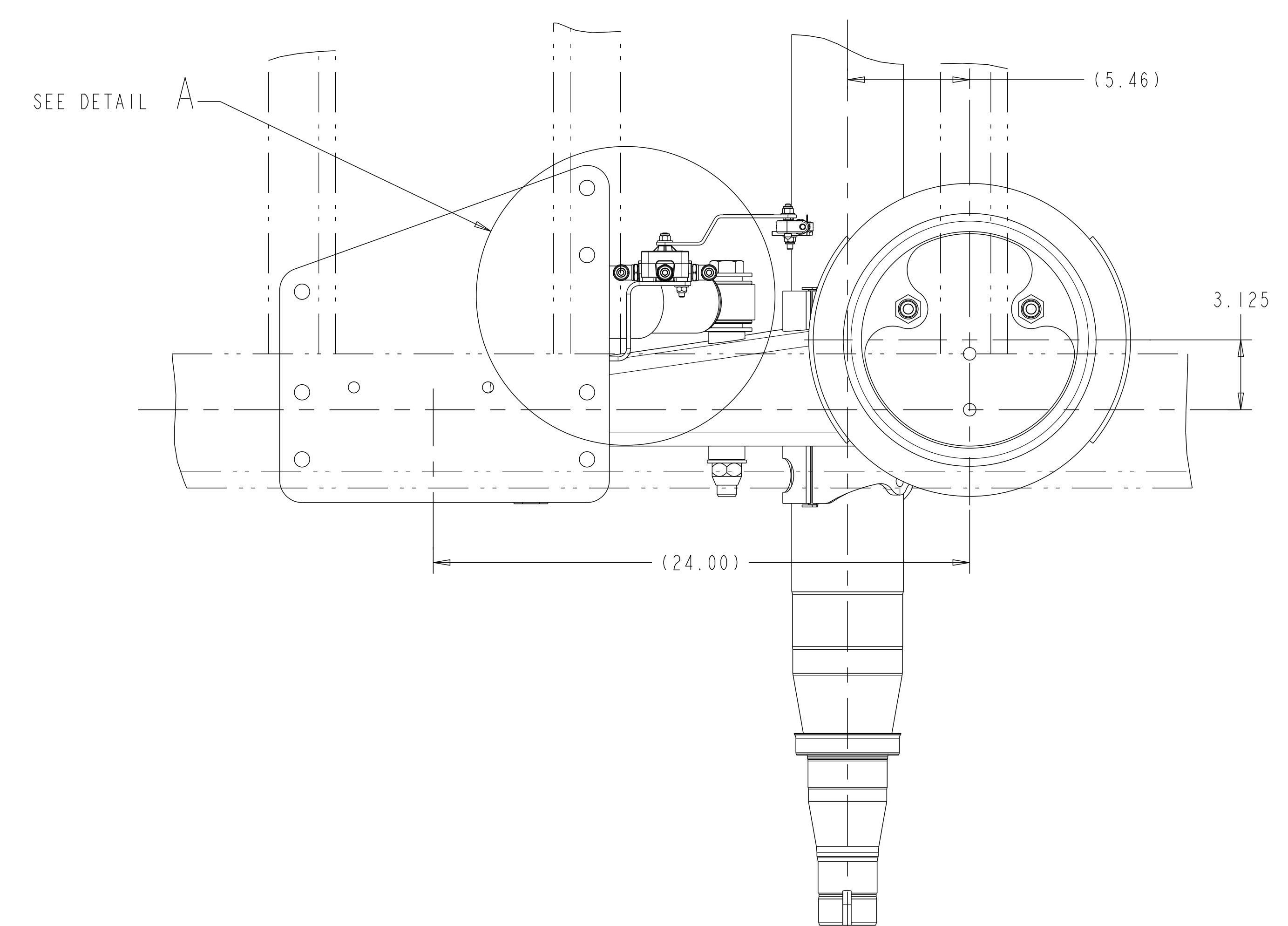
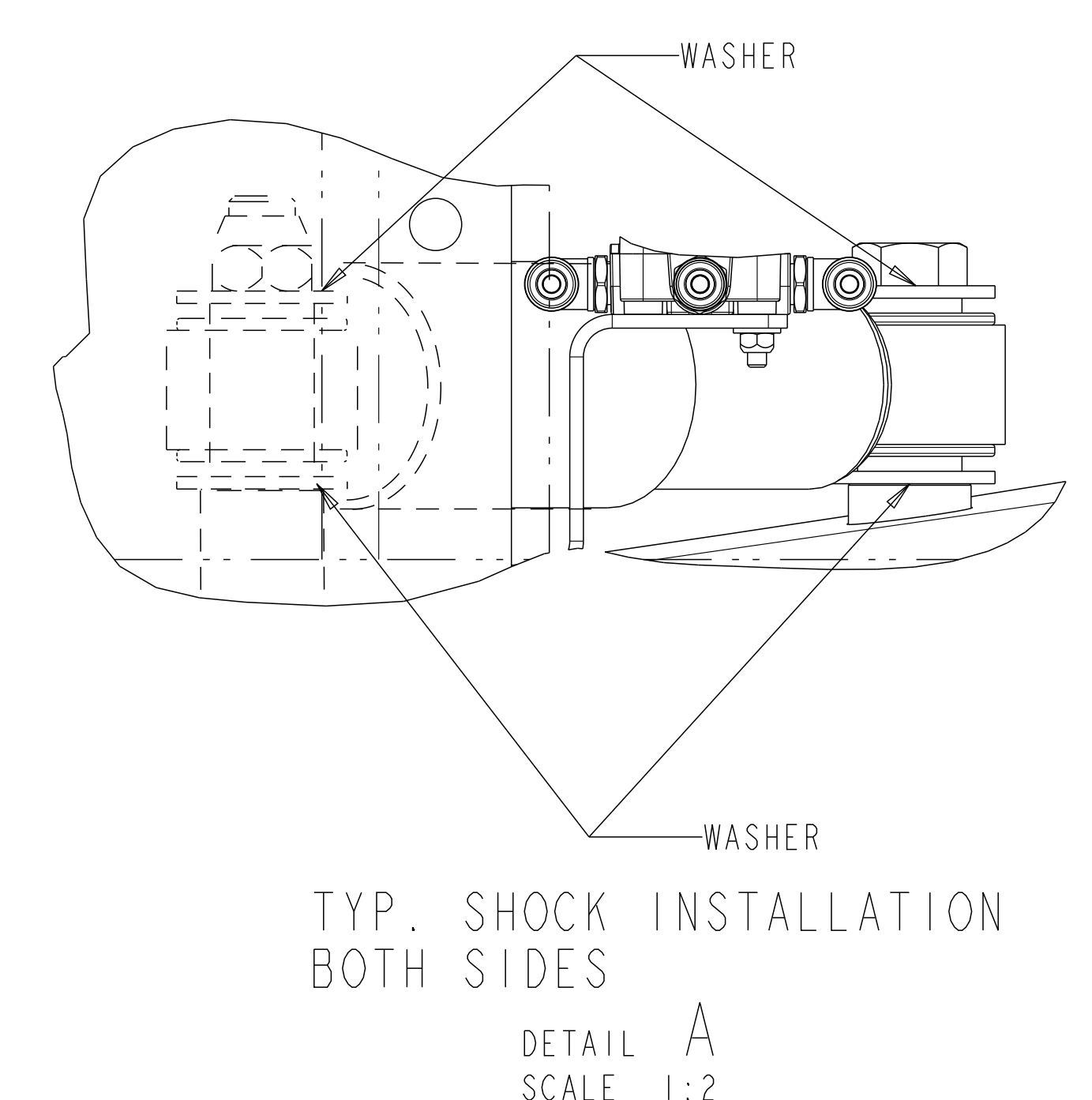
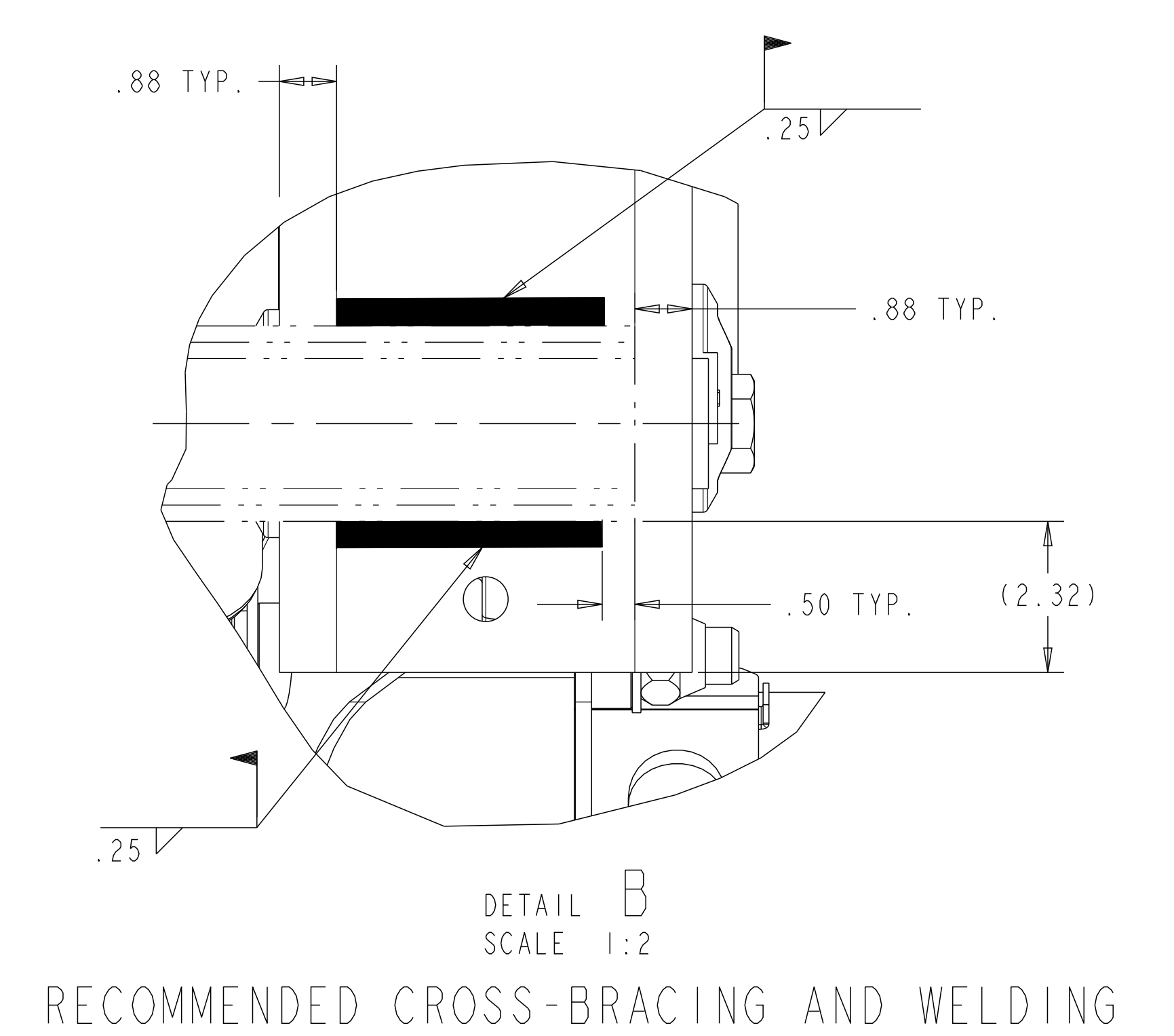
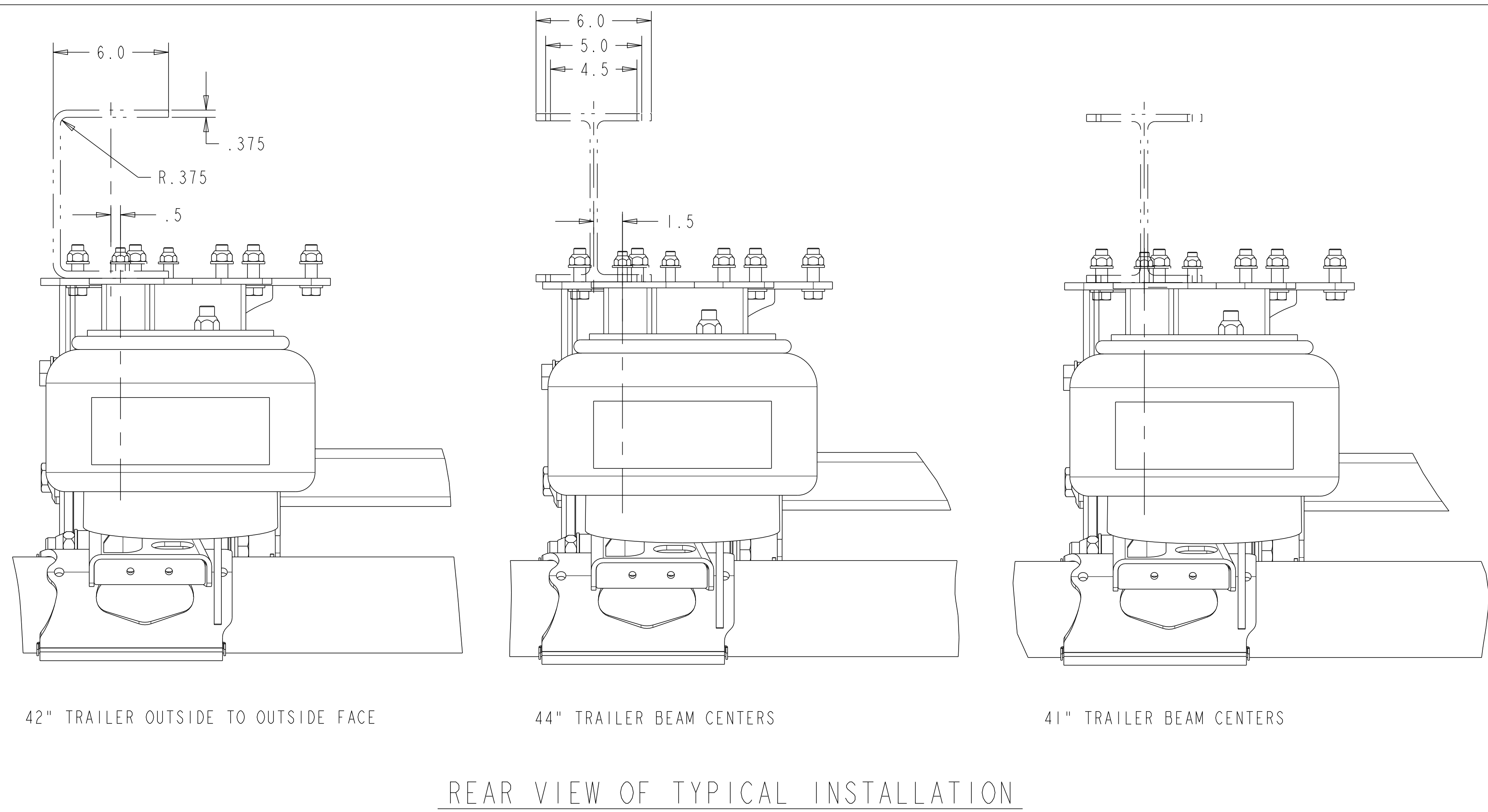
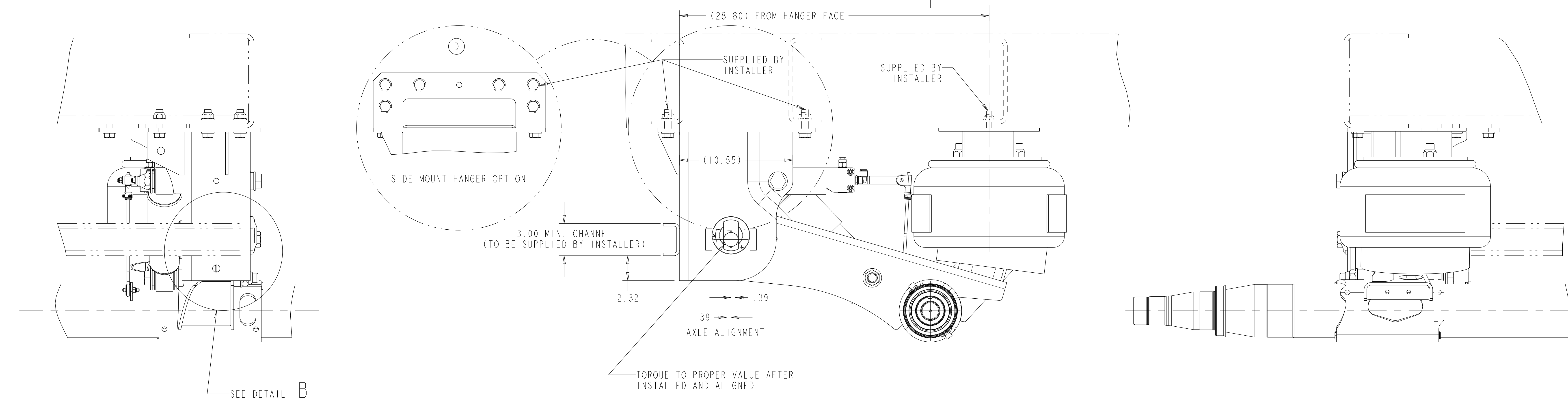


SIM. PARTS			
5-66240L_01			
REVISIONS			
A	RELEASED 5-66733F_01 FOR PRODUCTION.	113324 09-24-10	CH HN
B	SHOP CHART WAS 4-60559_12	115433 04/27/11	CH SS
C	WAS 1/2" FROM TOOLING HOLE	116459 10/10/11	CH SS
D	ADDED SIDE MOUNT HANGER PARTIAL VIEW	121032 03/11/13	CH SS
E	UPDATED RHCV REPRESENTATION	ECN-165357 30-JUL-20	EN SD



NOTE:  
 PROPER VEHICLE FRAME DESIGN IN THE AREA OF SUSPENSION ATTACHMENT IS THE RESPONSIBILITY OF THE INSTALLER.  
 ALL WELDING TO COMPLY WITH AWS STANDARDS 70 KSI MIN. WELD WIRE TENSILE STRENGTH.  
 NO WELDING OR DRILLING ALLOWED ON TRAILING ARMS  
 NO WELD WITHIN .25" OF FRAME BRACKET TOOLING HOLES  
 FOR GENERAL ARRANGEMENT INFORMATION SEE DRAWINGS 5-66734P\_01 & 5-66734Q\_01



REFER TO SHOP CHART 4-60559\_37 FOR TORQUE INFORMATION

DO NOT CHANGE MANUALLY

113324		PART/DWG NO. 5-66733F_01		EDC 00050	
RELEASE		NAME LAYOUT - MTA25T TRAILER		PAGE 1 OF 1	
APPROVED		DRAWN BY H.N. 06-Jan-10		CHECKED BY C.H. 06-Jan-10	
PROJ. ENG. SAIEG		MATERIAL		SPECIAL	
C.H. 06-Jan-10		PCCR 118544		SCALE 1:4	
DESIGN CONTROL GROUP W.W. TRAILER PRODUCTS		PART NO.		DRAWING SIZE E	

THIS PRINT IS LOANED ON A CONFIDENTIAL BASIS SUBJECT TO RETURN UPON DEMAND BY MERITOR AND NOTHING HEREON MAY BE REPRODUCED, USED OR DISCLOSED IN WHOLE OR IN PART WITHOUT THE PRIOR WRITTEN PERMISSION OF MERITOR.

APPLY SPECIFIED MERITOR MARKINGS PER DRAFTING ENGINEERING STANDARDS D-004

4 IN. 10THS. 100MM

WEIGHT RGH./FIN.

INQUIRY NO.

ORIGINAL FOR MTA25T

SCALE 1:4

DESIGN CONTROL GROUP W.W. TRAILER PRODUCTS

PART NO.