

NOTES:

1. REMOVE PAINT IN WELD AREAS BEFORE WELDING
2. UPPER AIR SPRING PEDESTAL MUST CONTACT BOTTOM OF TRAILING ARM
3. WELD SEQUENCE:
  - 1W OUT-BOARD PEDESTAL WALL TO TRAILING ARM
  - 2W IN-BOARD PLATE TO TRAILING ARM
4. APPLY PAINT TO WELDED AREAS PER SPEC P81 AFTER WELDING
5. SEE WELDING AND GENERAL ARRANGEMENT LAYOUTS FOR ALL OTHER INFO
6. FOR AFTERMARKET INSTALLATION REFERENCE ONLY DIMENSION FROM REAR SPINE PLATE TO AXLE LIFT PEDESTAL SIDE WALL

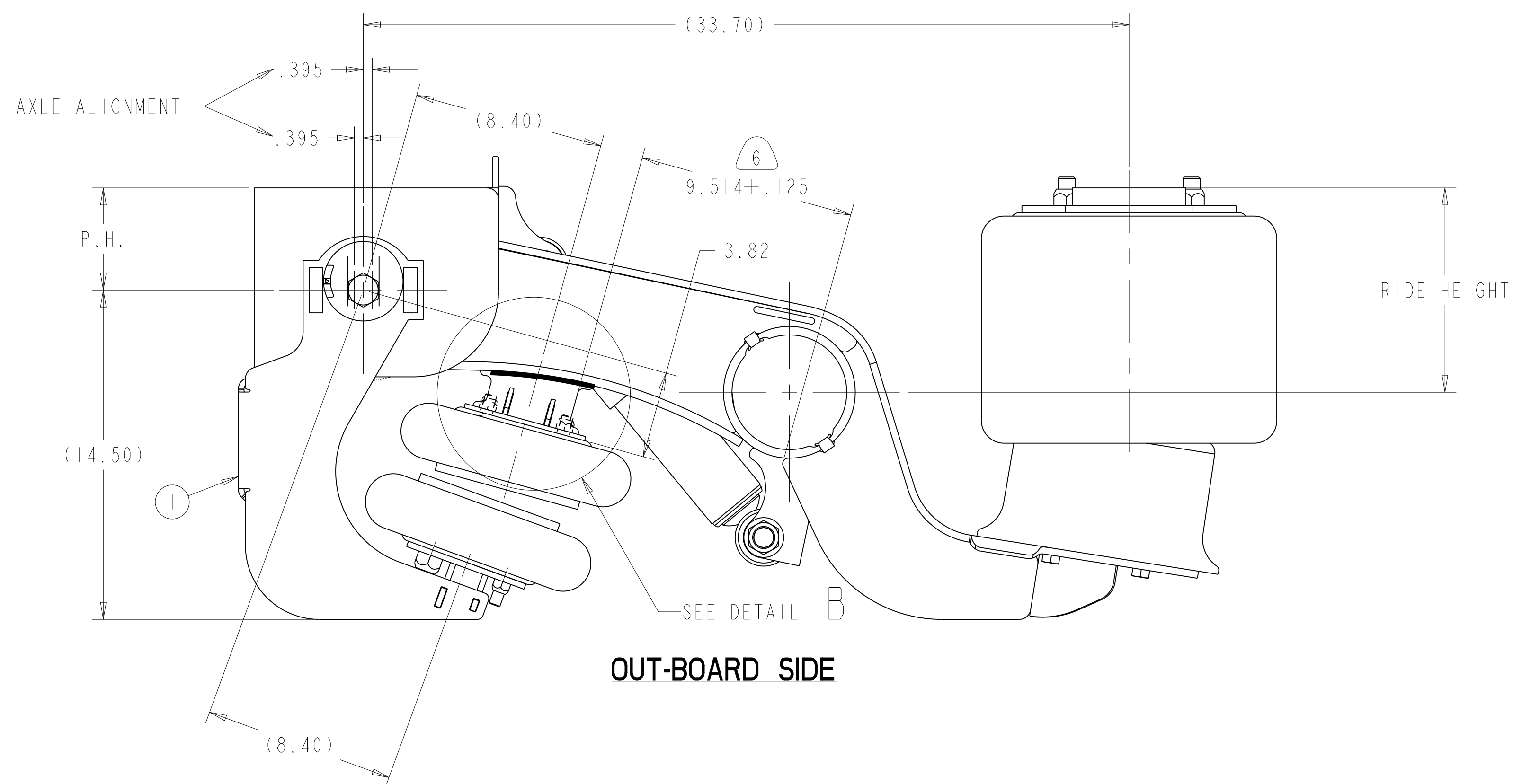
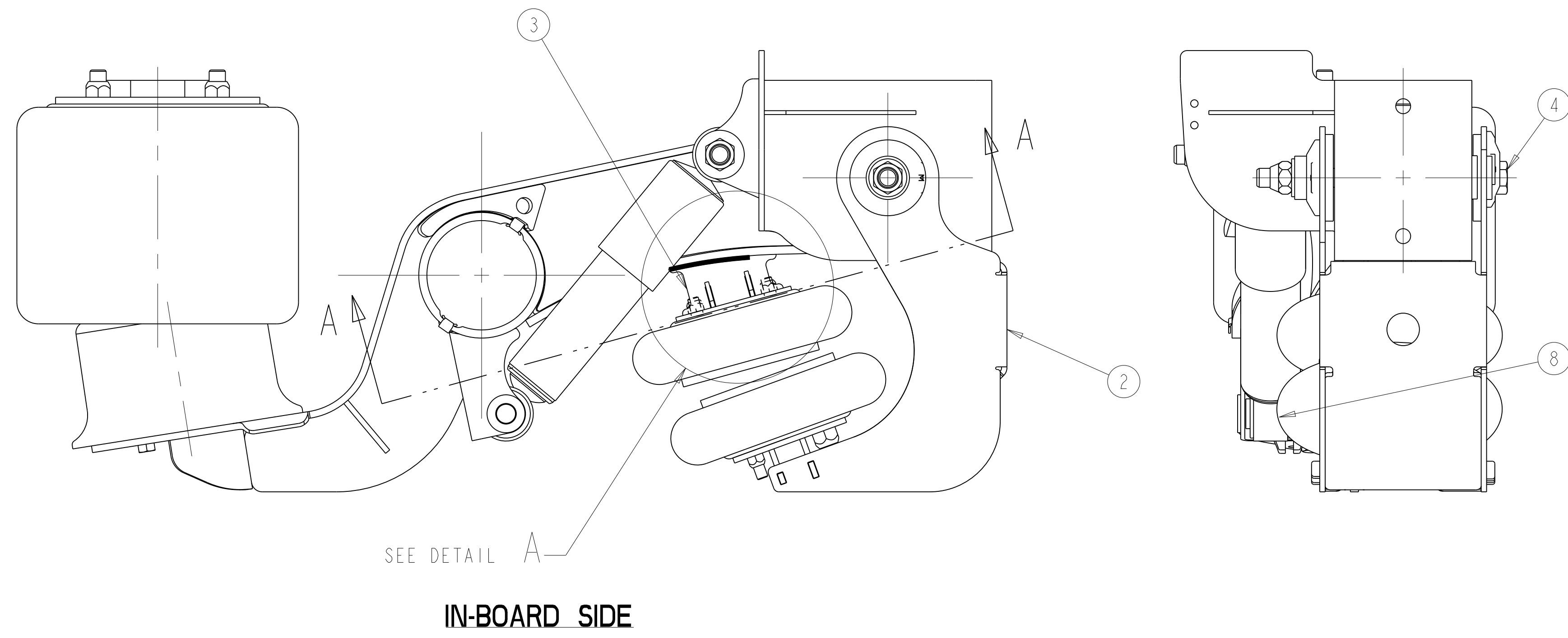
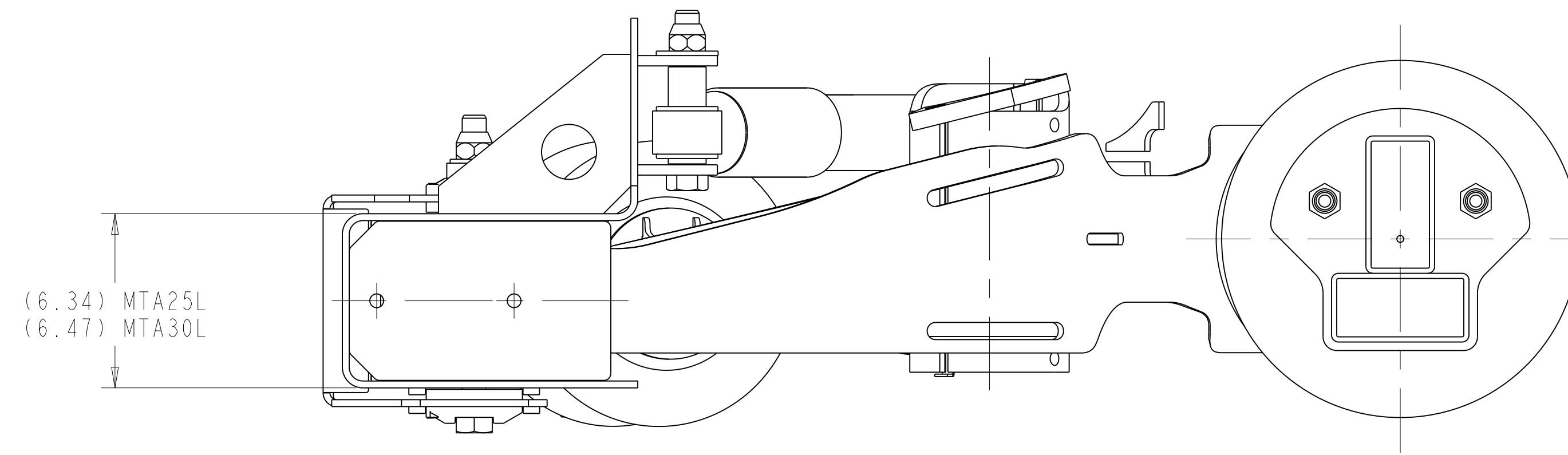
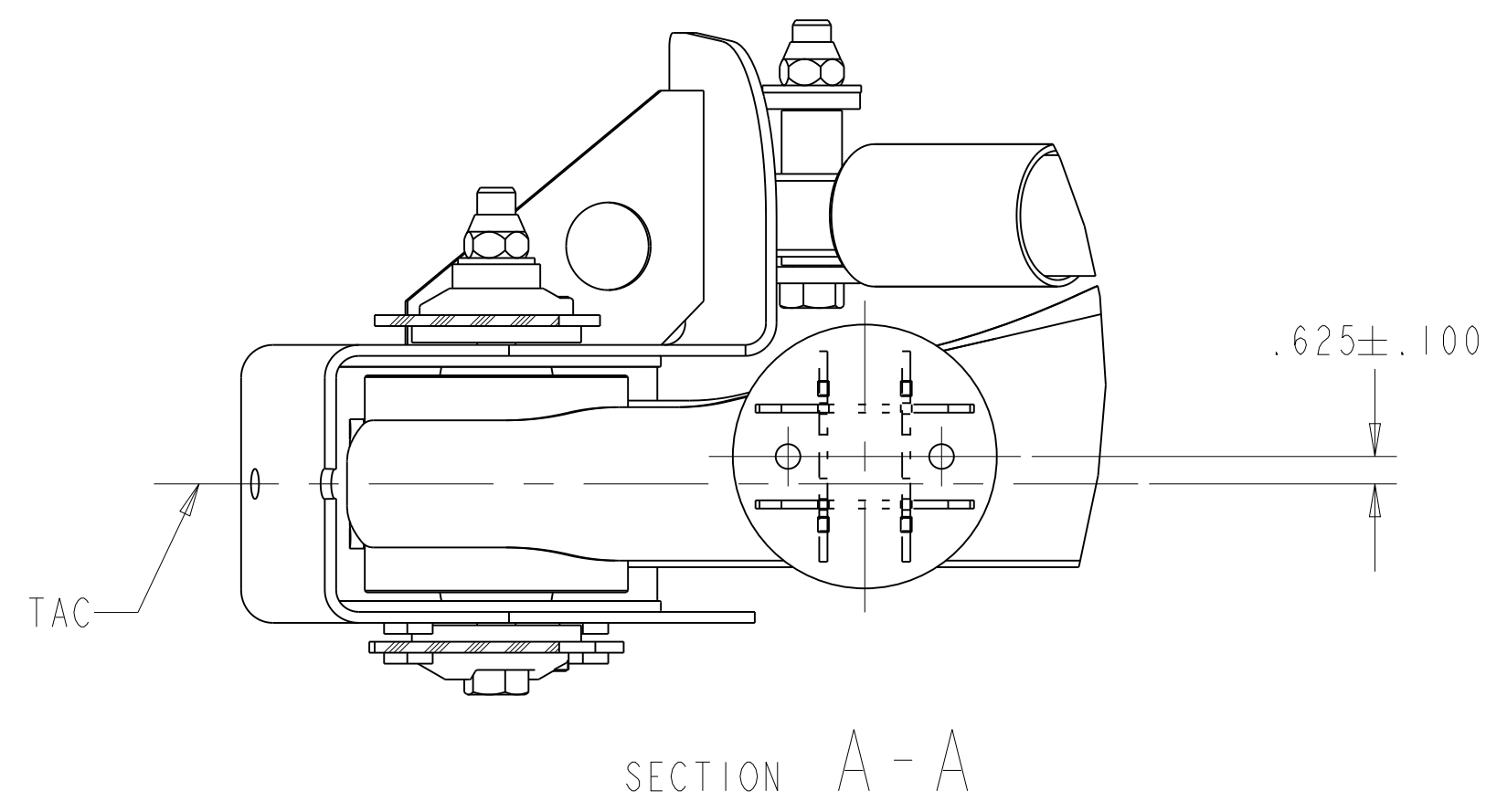
MTA25L / 30L WELD ON SUSPENSION LIFT INFO			
P.H.	RISE HEIGHT	LIFT	REBOUND
4.5	9.0	4.4	4.3
9.0	12.0	4.9	4.3
	14.0	5.5	3.5
	15.0	5.2	3.4
13.0	16.0	5.4	3.9
	17.0	5.6	3.6
	19.0	5.3	3.4

THIS LIFT IS NOT RECOMMENDED FOR 6.5", 7.5" & 8.0" RISE HEIGHT

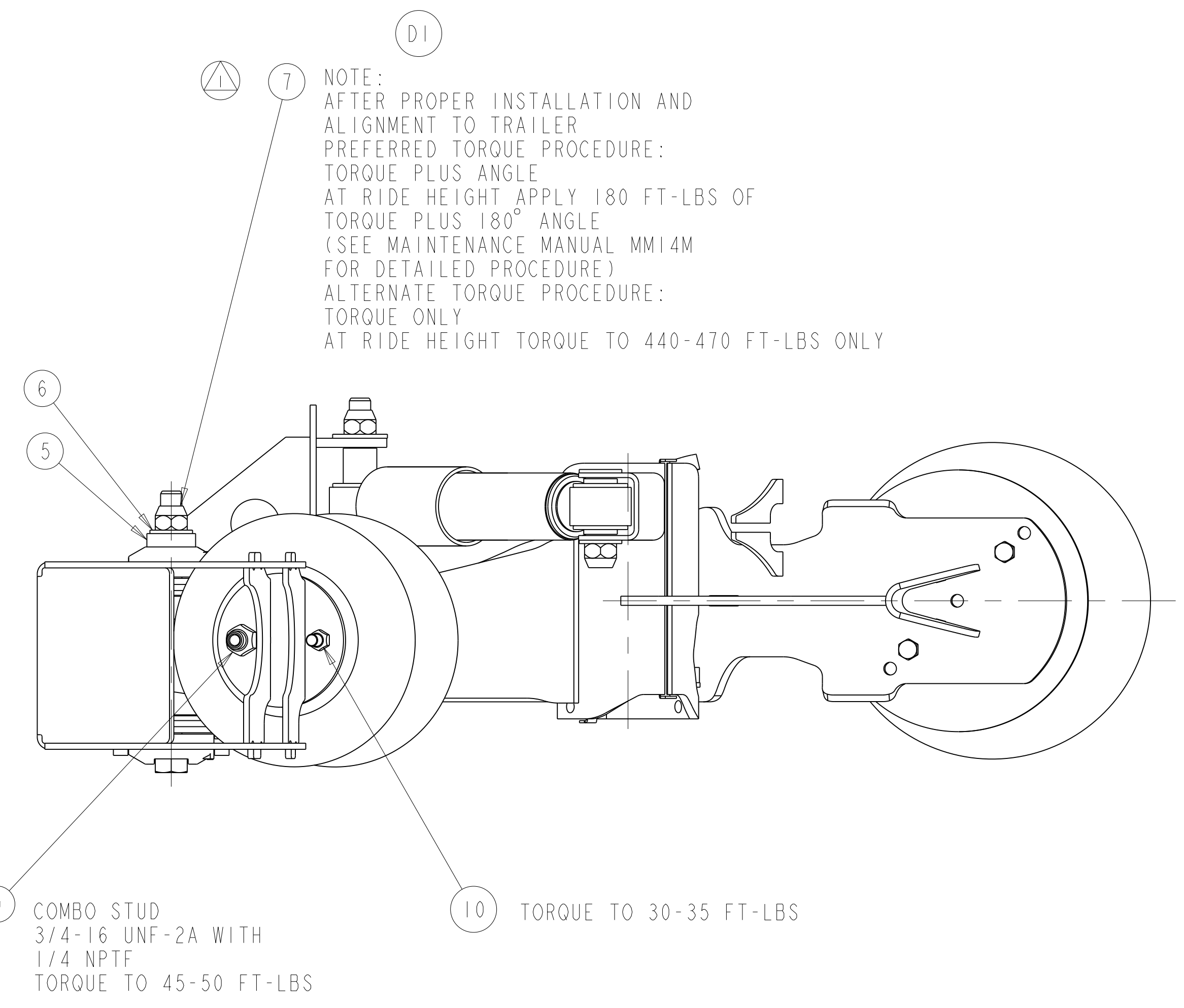
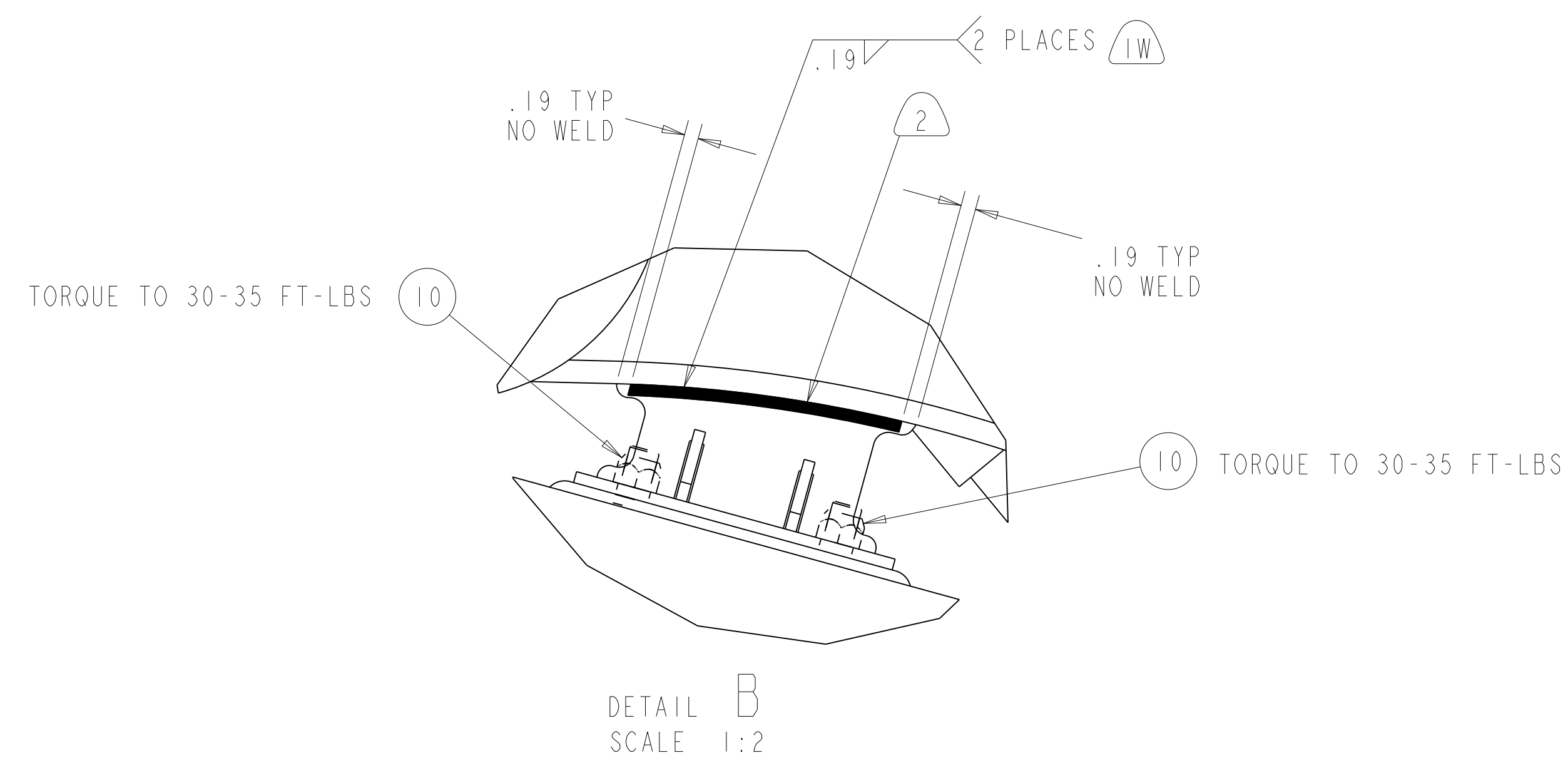
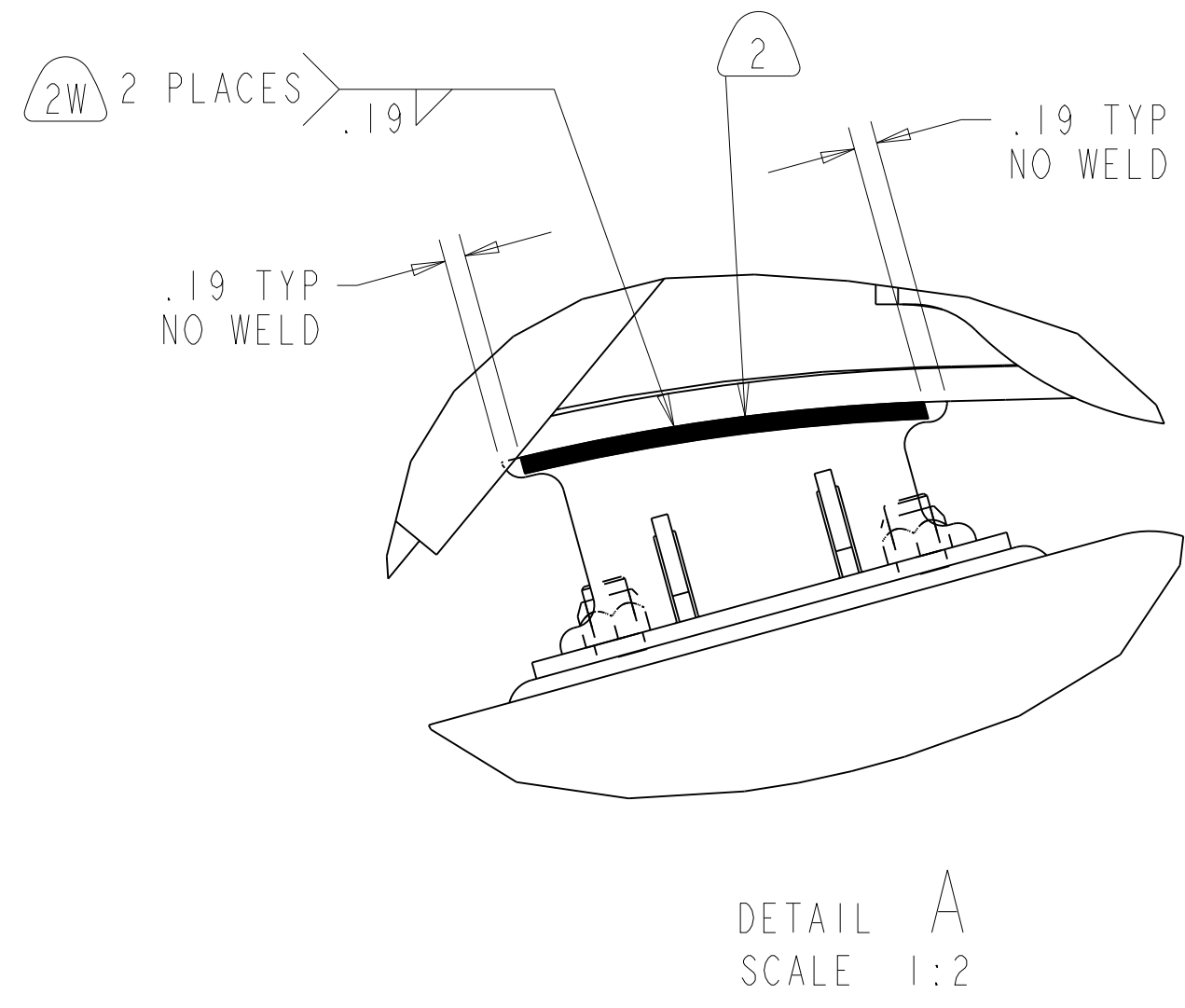
MTA25L LIFT KIT COMPONENTS			
ITEM	PART NUMBER	DESCRIPTION	QTY
1	A-3305S3971	ASSY-AXLE LIFT (LH)	1
2	A-3305T3972	ASSY-AXLE LIFT (RH)	1
3	A-3305L3652	ASSY-AXLE LIFT	2
4	S-21488-M-2	SCREW CAP	2
5	I229X4964	BOSS	2
6	I229Q5295	WASHER-HARDENED	2
7	I227X1766	NUT-LOCK,FIN	2
8	A-2258G1489	SPRING AIR	2
9	I227M1573	NUT-LOCK,FIN	2
10	I227B1614	NUT-LOCK,FIN	6

MTA30L LIFT KIT COMPONENTS			
ITEM	PART NUMBER	DESCRIPTION	QTY
1	A1-3305S3971	ASSY-AXLE LIFT (LH)	1
2	A1-3305T3972	ASSY-AXLE LIFT (RH)	1
3	A-3305L3652	ASSY-AXLE LIFT	2
4	S-21488-M-2	SCREW CAP	2
5	I229X4964	BOSS	2
6	I229Q5295	WASHER-HARDENED	2
7	I227X1766	NUT-LOCK,FIN	2
8	A-2258G1489	SPRING AIR	2
9	I227M1573	NUT-LOCK,FIN	2
10	I227B1614	NUT-LOCK,FIN	6

5-68942_01		
REVISIONS		
A	RELEASE 5-68942A_01 FOR PRODUCTION	118227 19-Mar-12 LGS SJP
B	LIFT HANGER BRACKET RE-DESIGNED, B1- A1-3305S3971 WAS A1-3305-S-3061, A1-3305T3972 WAS A1-3305-T-3062, B2- A-3305S3971 WAS A-3305-S-3061, A-3305T3972 WAS A-3305-T-3062 VIEWS UPDATED	123206 05-MAY-14 CH SS
C	UPDATED 5-68942A_01 LAYOUT TO REFLECT THE CHANGES IN SHOCK ABSORBER BRACKET	124403 25-Jun-14 KKH SD
D	D1- REVISED NOTE FOR PIVOT NUT TORQUE D2- ADDED MAJOR CHARACTERISTIC D3-D4- REVISED PART NUMBERS: I229Q5295 WAS 200259-6 I227X1766 WAS I227-R-1604	ECN-137447 02-13-17 JMK VL



CAD FILES	
NAME	TYPE
5-68942A E.1	DRAWING
5-68942A E.1	MODEL



- QUALITY CONTROL CHARACTERISTICS
- ⊕ DENOTES MAJOR CHARACTERISTIC
  - ⊕ D2 ⊕ PIVOT NUT TORQUE PLUS ANGLE

(MTA25L WELD-ON SUSPENSION, ROADSIDE POSITION SHOWN AT 9.0" RH)

118227	PART/DWG NO. 5-68942A-01	11707
RELEASE	NAME LIFT KIT - SUSPENSION	NO. OF SHEETS 1 OF 1
PROCESS	SCALE 1:4	DRAWING W W TRAILER PRODUCTS
DESIGN CONTROL GROUP	DATE 14-Mar-12	PROJECT MTA25L / 30L
DESIGNER S.J.P.	DATE 14-Mar-12	PROJECT MTA25L / 30L
DATE 14-Mar-12	PROJECT MTA25L / 30L	PROJECT MTA25L / 30L
DATE 14-Mar-12	PROJECT MTA25L / 30L	PROJECT MTA25L / 30L

APPLY SPECIFIED MERITOR MARKINGS TO DRAFTING ENGINEERING STANDARDS 0-004

THIS PRINT IS LOANED ON A CONFIDENTIAL BASIS SUBJECT TO RETURN UPON DEMAND BY MERITOR AND NOTHING HEREON MAY BE REPRODUCED, USED OR DISCLOSED IN WHOLE OR IN PART WITHOUT THE PRIOR WRITTEN PERMISSION OF MERITOR.

MATERIAL SEE TABLE

PROCESS 4

3RD ANGLE PROJECTION

INCH

DO NOT CHANGE MANUALLY