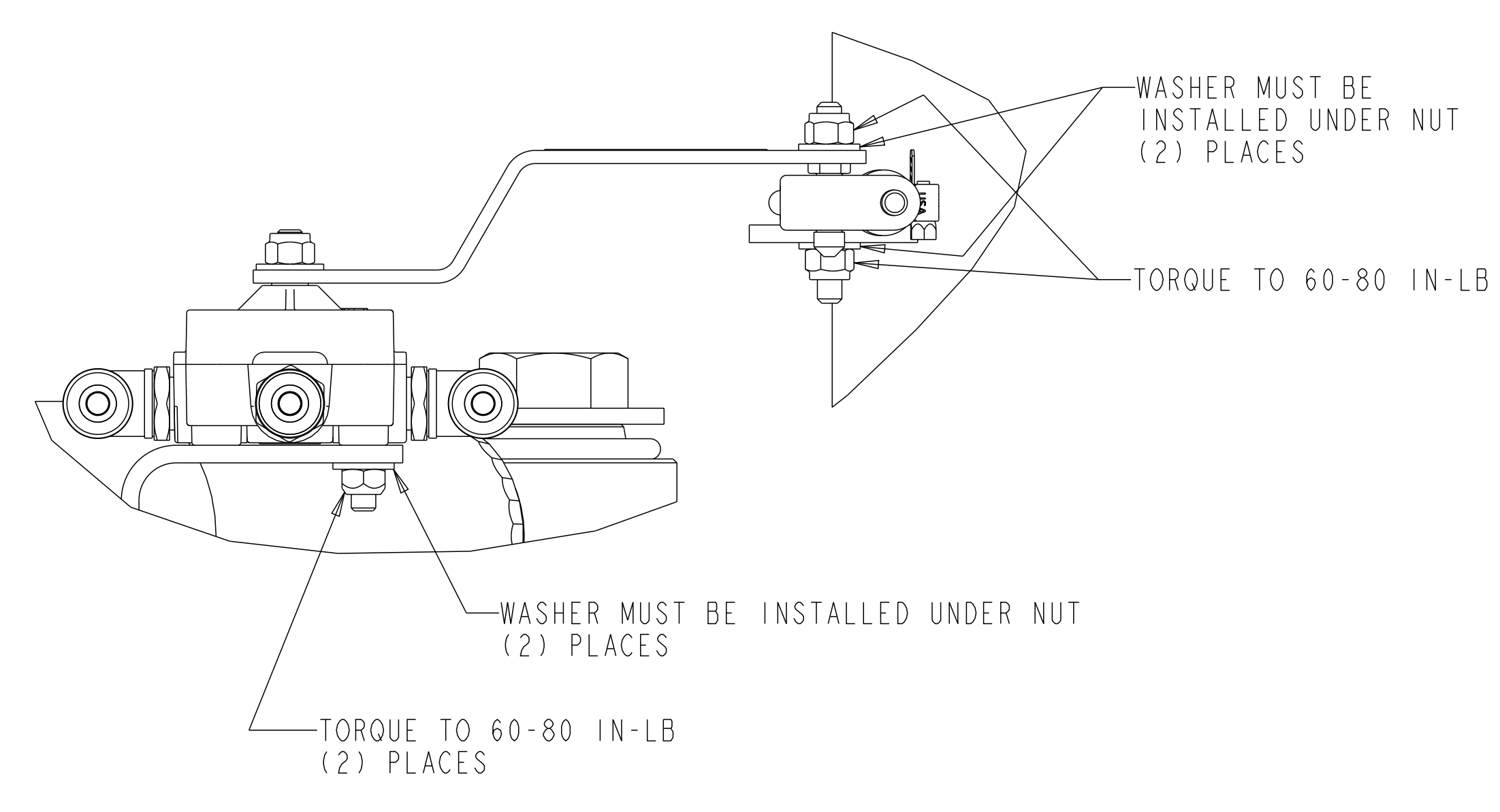
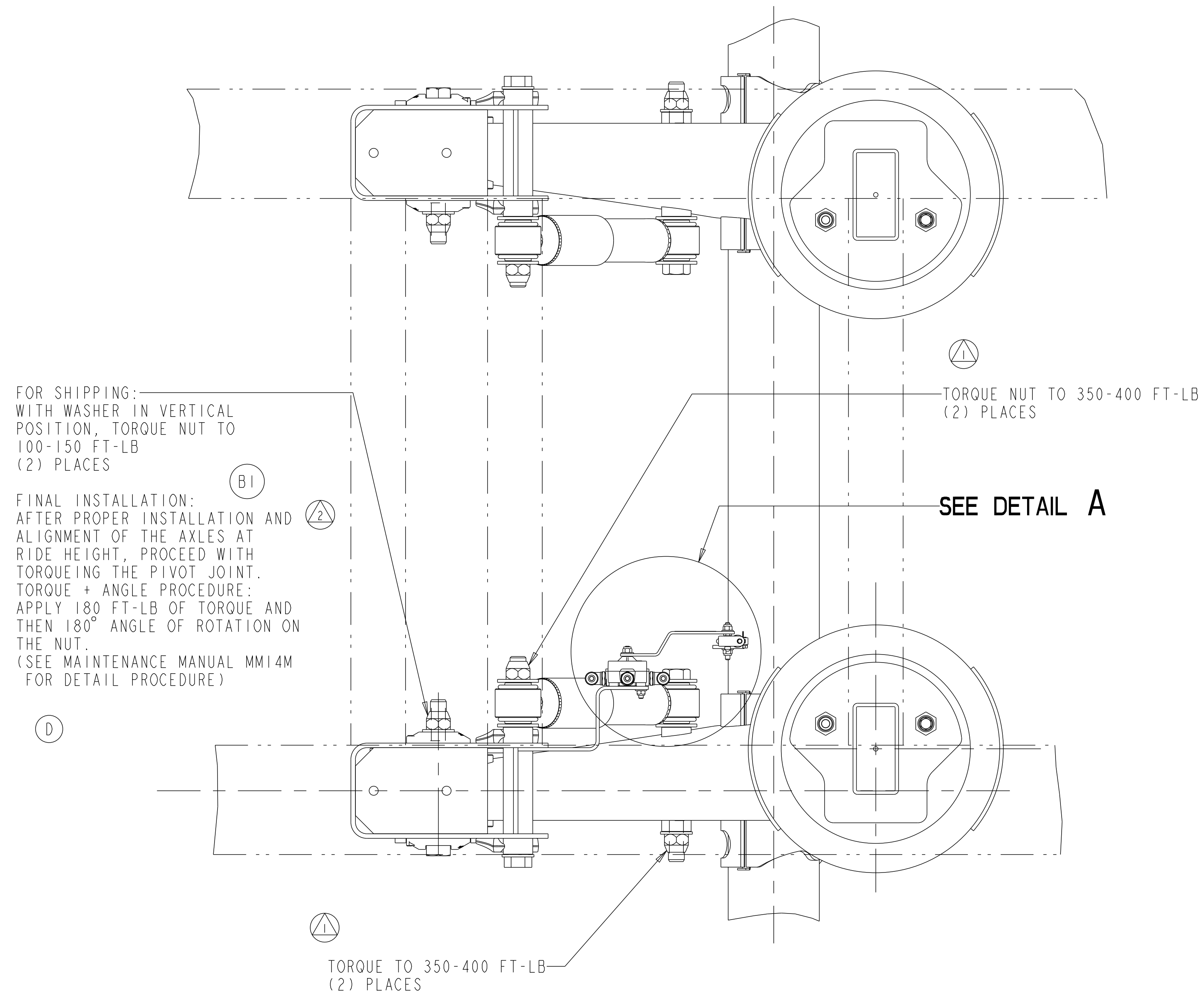


SIM. PARTS		4-60559_09	
REVISIONS			
A	RELEASED 4-60559_36 FOR PRODUCTION	115433 04/27/11	CH SS
B	F1- REVISED NOTE FOR PIVOT NUT TORQUE F2- ADDED MAJOR CHARACTERISTIC FOR PIVOT NUT TORQUE	ECN-137447 02-13-17	JMK VL
C	UPDATED RHCV REPRESENTATION	ECN-167907 15-JUN-20	VMJ SD
D	REMOVED OPTIONAL TORQUE DETAILS AND UPDATED TORQUE INFORMATION TO TORQUE PLUS ANGLE ONLY	ECN-187308 16-MAR-22	EN MKV

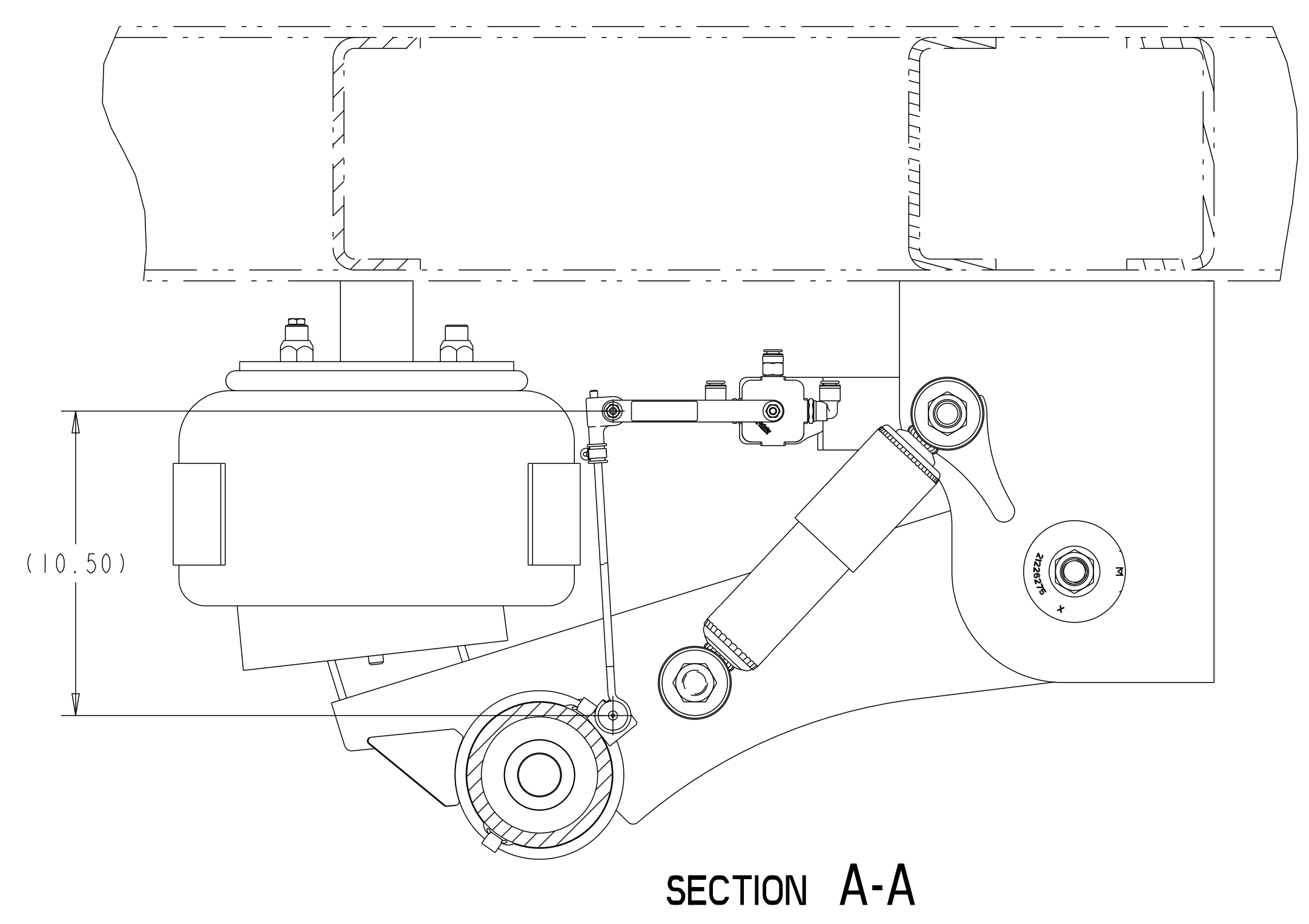
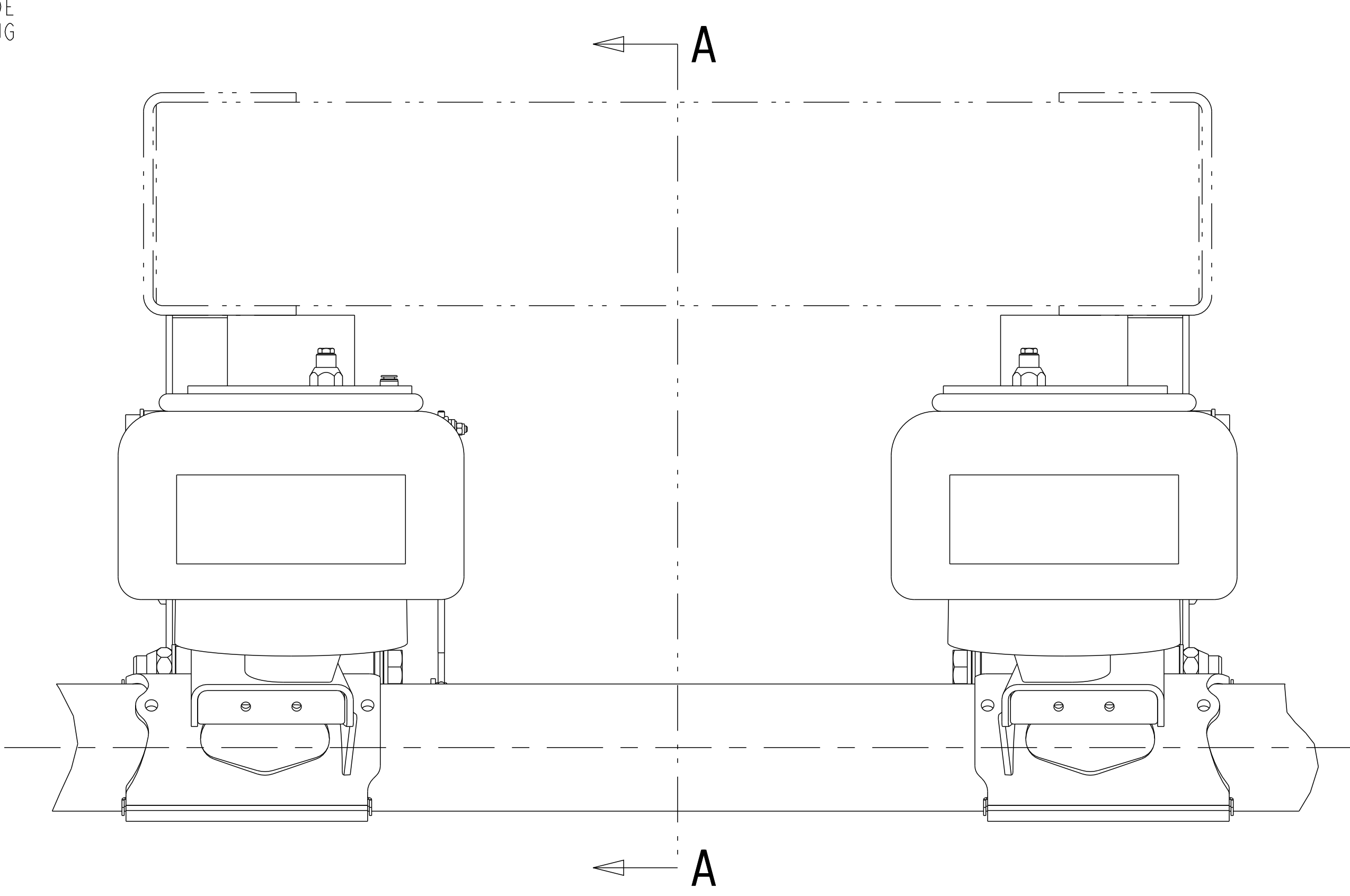
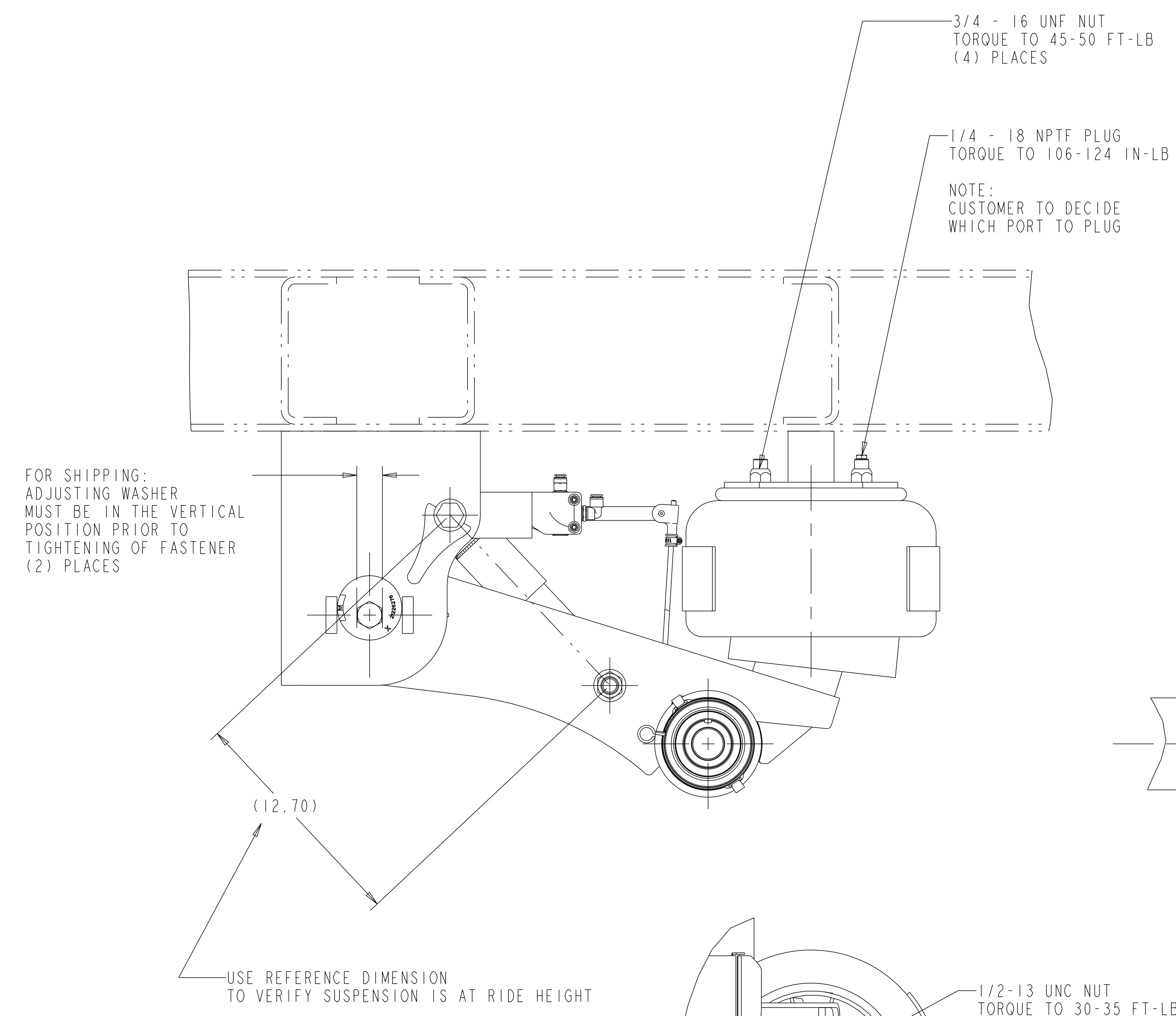


DETAIL A
SCALE 3:4

NOTES:
REFER TO APPROPRIATE 4-60559 LAYOUTS TO OBTAIN AXLE COMPONENT TORQUE VALUES

- QUALITY CONTROL CHARACTERISTICS
- ⚠ DENOTES MAJOR CHARACTERISTIC
 - ⚡ SHOCK NUT TORQUE
 - B2 ⚠ PIVOT NUT TORQUE PLUS ANGLE

CAD FILES		
FILE NAME	REV.	VER
DRAWING 4-60559_36	D.2	
ASSEM 4-60559_36	D.2	



SUSPENSION SERIES: MTA TOP MOUNT

NOTE:
TORQUE ALL FASTENERS WITH SUSPENSION AT RIDE HEIGHT

FOR MTA23T WELD-ON ASSEMBLIES, SEE 5-66240K_01
FOR MTA25T WELD-ON ASSEMBLIES, SEE 5-66733E_01
FOR MTA30T WELD-ON ASSEMBLIES, SEE 5-67623E_01
FOR FRAME WELDMENT INFORMATION

APPLY SPECIFIED MERITOR MARKINGS PER DRAFTING ENGINEERING STANDARDS D-004	THIS PRINT IS LOANED ON A CONFIDENTIAL BASIS SUBJECT TO RETURN UPON DEMAND BY MERITOR AND NOTHING HEREON MAY BE REPRODUCED, USED OR DISCLOSED IN WHOLE OR IN PART WITHOUT THE PRIOR WRITTEN PERMISSION OF MERITOR.	MATERIAL PROCESS	SEE BILL OF MATERIAL FOR SPECIFIC INDIVIDUAL MODEL INFORMATION				3RD ANGLE PROJECTION 	DRAWING SIZE E		INCH
			APPROVED PROJ. ENG. S.S. MATERIAL SPECIAL DRAWN BY C. HOLT 03-30-11 CHECKED BY S. SAIEG 04-04-11	PART/DWG NO. 4-60559_36	EDC 00909					
4 IN. 10THS. 100MM		WEIGHT RGH./FIN.	INQUIRY NO.	C.F.T.E. NO. APP. NO. 116105-049	ORIGINAL FOR MTA TOP MOUNT	SCALE 1:4	DESIGN CONTROL GROUP W.W. TRAILER PRODUCTS	PART NO.	PAGE 1 OF 1	

DO NOT CHANGE MANUALLY