

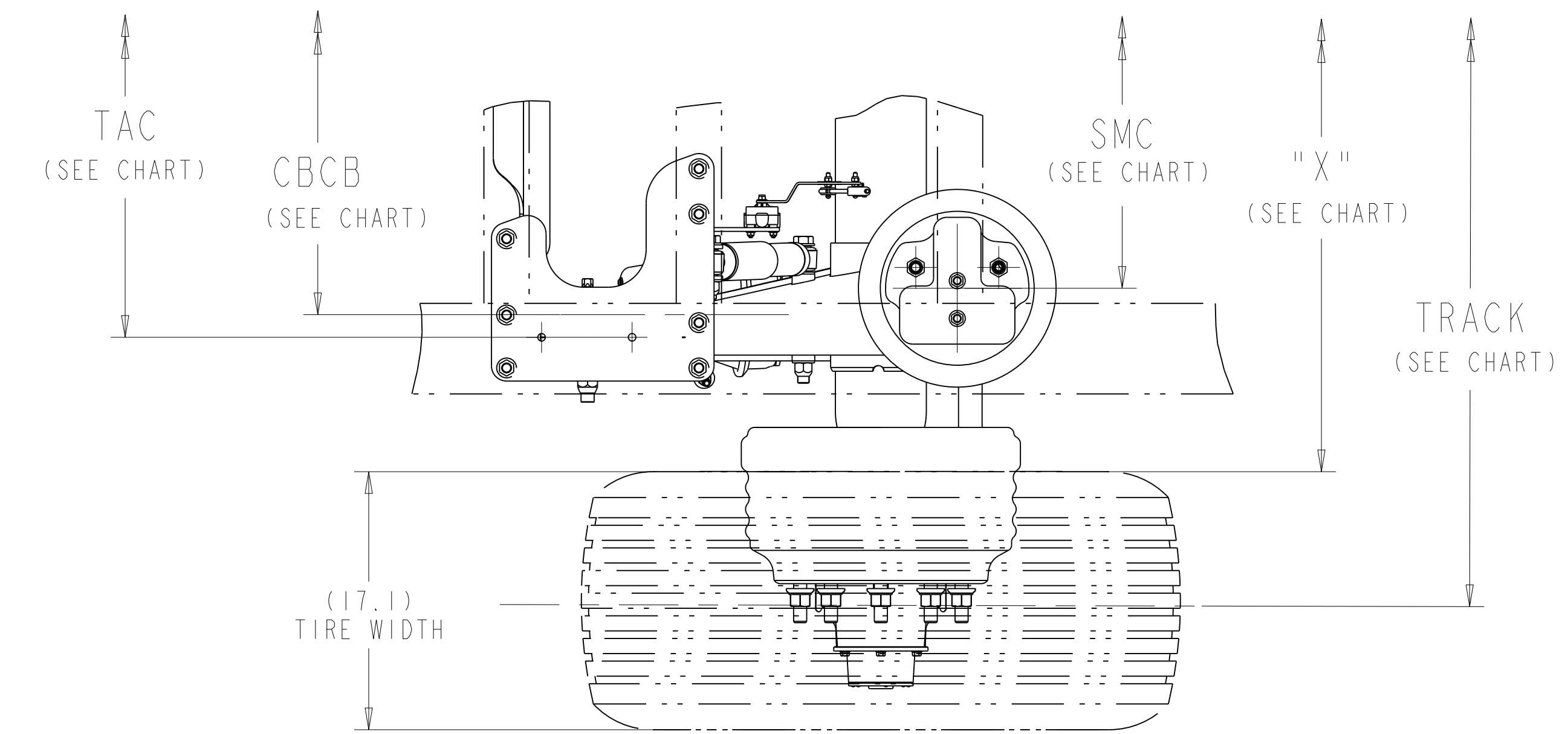
TYP. SHOCK INSTALLATION

DETAIL A
SCALE 1:2

DUAL WHEEL APPLICATION

APPLICATION	TRACK	CAM CLOCKING	"X" REF.	CBCB	SMC	TAC
DUAL WHEEL	71.5	BAR 103°	46.4	34.50	31.0	37.5
DUAL WHEEL	77.5	BAR 103°	52.4	40.50	37.0	43.5
SUPER SINGLE	83.5	BAR 103°	58.4	46.50	43.0	49.5

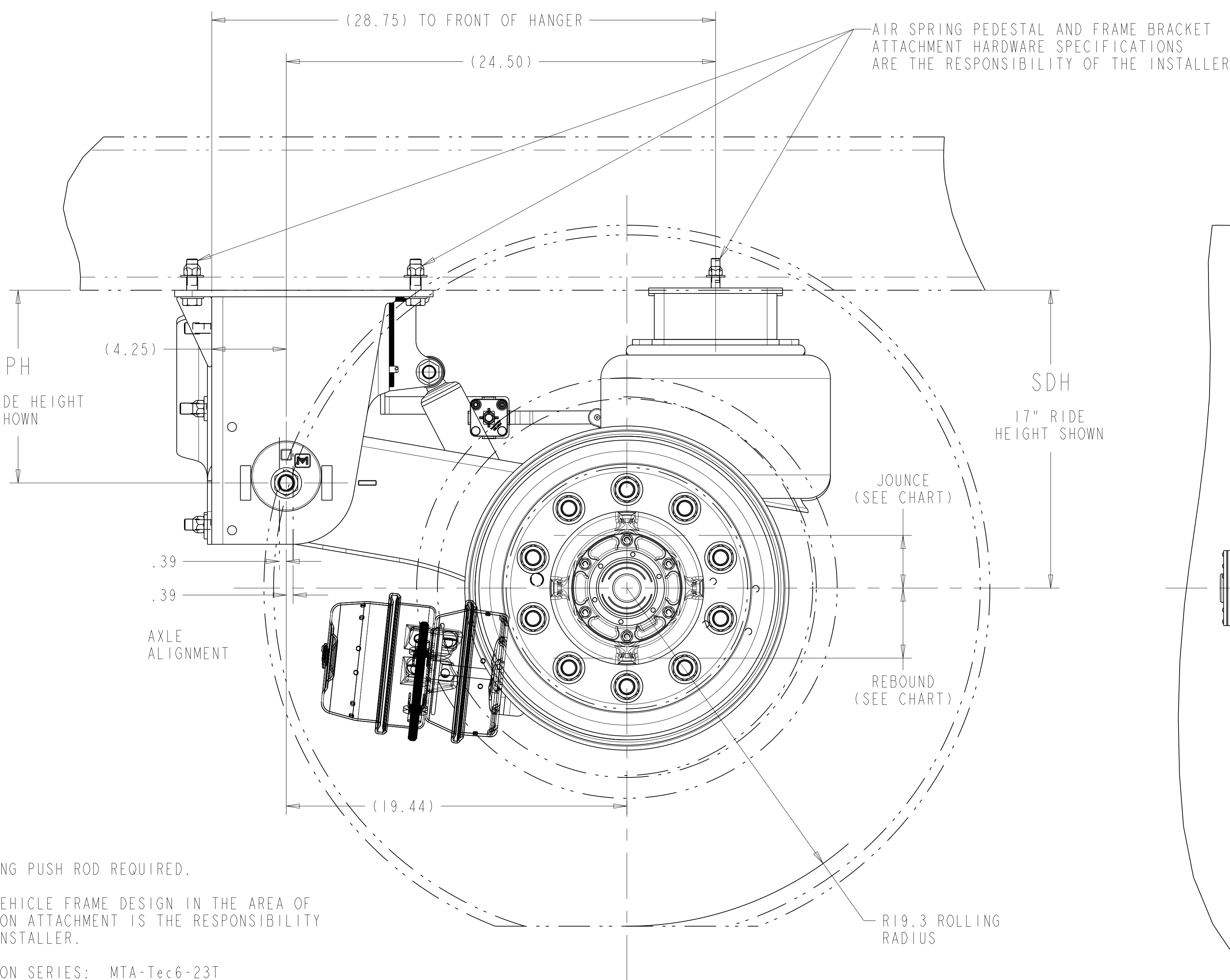
REVISIONS		
A	RELEASE 5-70010C FOR PRODUCTION	ECN-130875 4/25/16 CH SS
B	UPDATED COMPONENTS AND INFO. TO LATEST	ECN-133727 13-DEC-17 CH VL
C	UPDATED HANGERS TO LATEST	ECN-147394 20-APR-18 CH MS
D	UPDATED VIEWS TO LATEST TRAILING ARMS & PIVOT BOLT	ECN-155887 29-APR-19 CH SS
E	UPDATED VIEWS TO LATEST	ECN-164598 11-DEC-19 CH DL



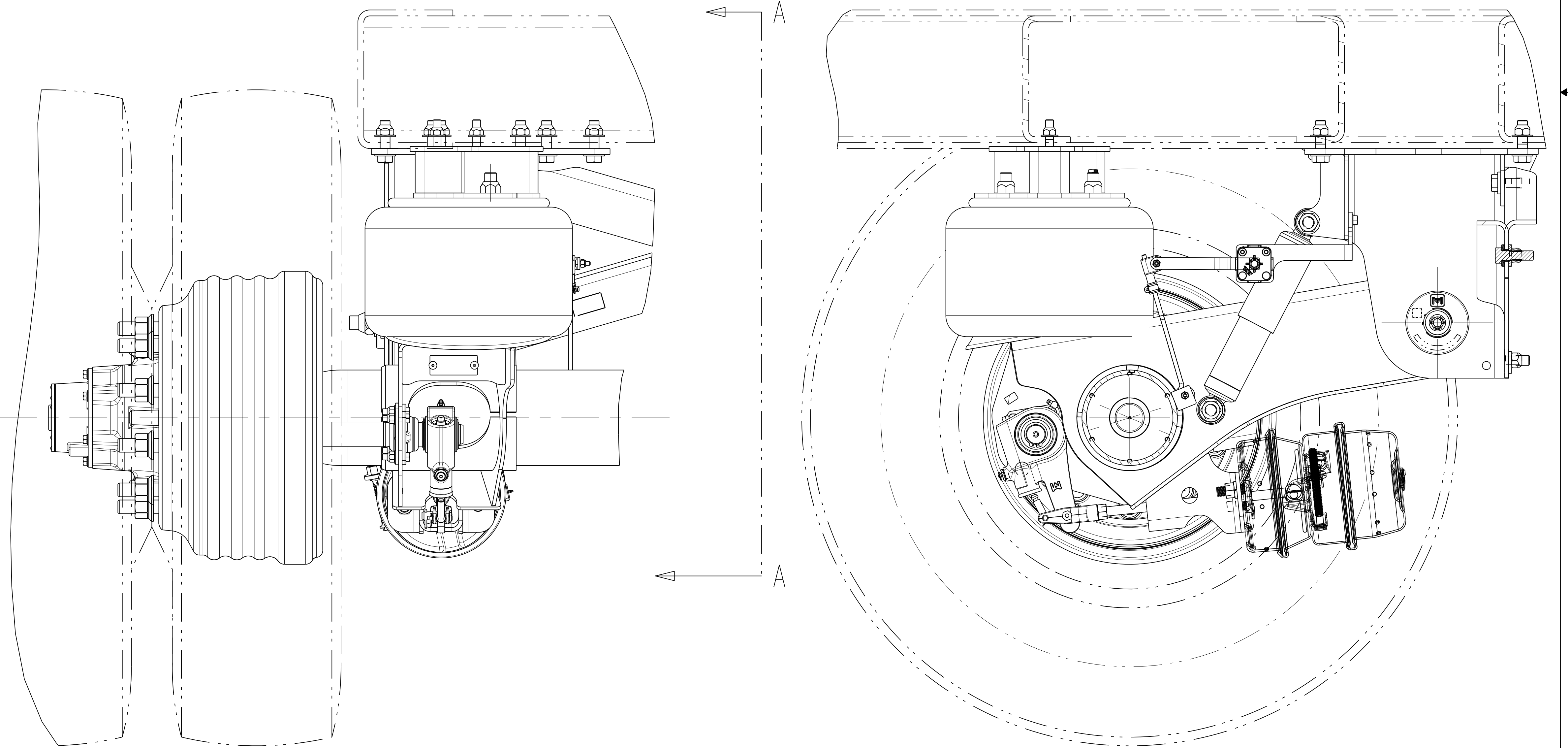
SUPER SINGLE APPLICATION

SCALE 1/8

CAD FILES	
NAME	TYPE
5-70010C.E.8	DRAWING
5-70010C.E.6	MODEL



AIR SPRING PEDESTAL AND FRAME BRACKET ATTACHMENT HARDWARE SPECIFICATIONS ARE THE RESPONSIBILITY OF THE INSTALLER



SECTION A-A

NOTES:
 9.75" LONG PUSH ROD REQUIRED.
 PROPER VEHICLE FRAME DESIGN IN THE AREA OF SUSPENSION ATTACHMENT IS THE RESPONSIBILITY OF THE INSTALLER.
 SUSPENSION SERIES: MTA-Tec6-23T
 SUSPENSION STATIC DESIGN CAPACITY = 23,000 LBS.
 RATING BASED ON APPLICATION APPROVAL.
 RATINGS FOR THE COMPONENTS WITHIN AN INDIVIDUAL MERITOR SUPPLIED SUSPENSION ASSEMBLY, INCLUDING BRAKES, HUBS, AND BEARINGS, MAY VARY AND MAY NOT BE EQUAL TO THE NOMINAL SUSPENSION RATING.
 NO WELDING OR DRILLING ALLOWED ON TRAILING ARMS.
 NO WELD WITHIN .25" OF FRAME BRACKET TOOLING HOLES.

PH	SDH	RIDE HEIGHT	OUNCE	REBOUND
8.00	13.5	13.5"	2.55	4.7
8.00	14.0	14"	3.05	4.2
9.00	15.0	15"	3.05	4.2
10.00	16.0	16"	3.05	4.2
11.00	17.0	17"	3.05	4.2

FOR X BRACE INSTALLATION REFER TO 5-69116 LAYOUT
 REFER TO SHOP CHART 4-60559.42 FOR TORQUE INFORMATION
 DATA BASED ON:
 DUAL TIRE SIZE: 11R22.5
 WHEEL OFFSET: 6.62
 SINGLE: TIRE SIZE 445/50R22.5
 WHEEL OFFSET: .56

	THIS PRINT IS LOANED ON A CONFIDENTIAL BASIS SUBJECT TO RETURN UPON DEMAND BY MERITOR AND NOTHING HEREON MAY BE REPRODUCED, USED OR DISCLOSED IN WHOLE OR IN PART WITHOUT THE PRIOR WRITTEN PERMISSION OF MERITOR.	MATERIAL: --- PROCESS: ---	SEE BILL OF MATERIAL FOR SPECIFIC INDIVIDUAL MODEL INFORMATION	APPROVED: SAIEG	DRAWN BY: C. HOLT 7-14-15	CHECKED BY: S.S. 7-14-15	3RD ANGLE PROJECTION	DRAWING SIZE: E	MERITOR INCH
	APPLY SPECIFIED MERITOR MARKINGS TO DRAFTING ENGINEERING STANDARDS 0-004	1/4 IN. LOTS. 1/10MM	WEIGHT RGH./FIN. LBS	INDUSTRY NO. C.H./T.E. NO. APP. NO. 128762	ORIGINAL FOR MTA-Tec6-23T	SCALE: 1:4	DESIGN CONTROL GROUP TRAILER PRODUCTS N.A.	PART NO. 5-70010C	EDC 04627

DO NOT CHANGE MANUALLY