

Revision: G.2

STATE: Engineering Released

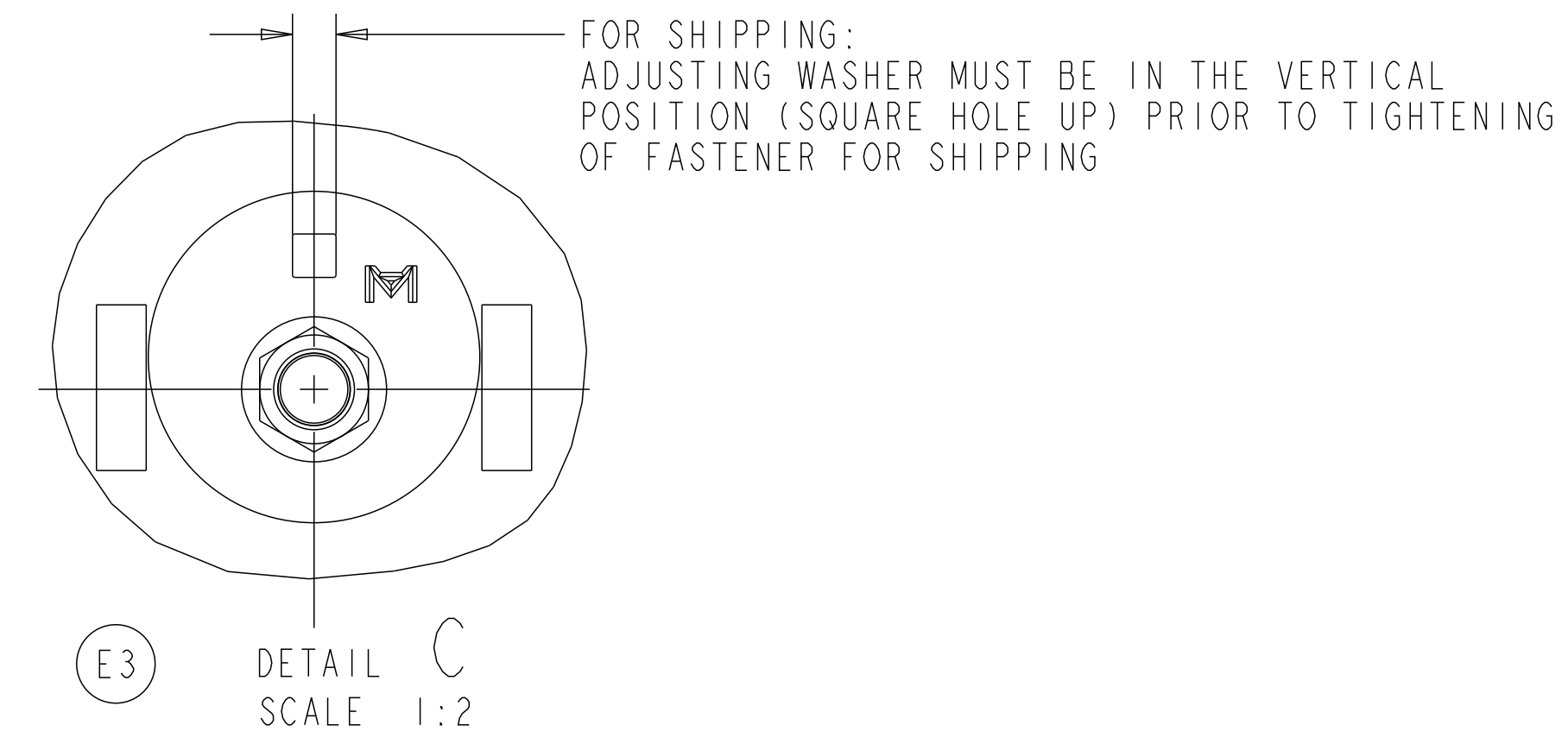
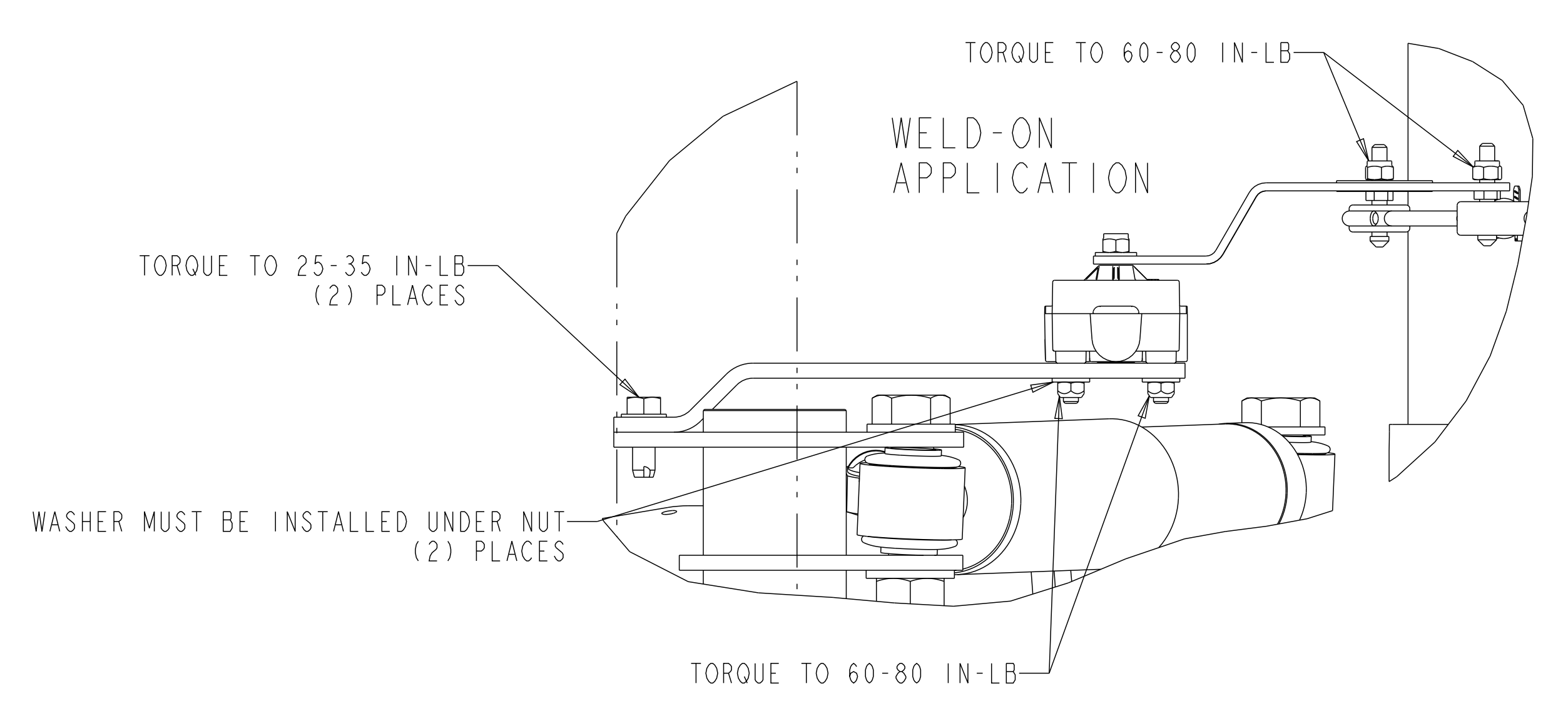
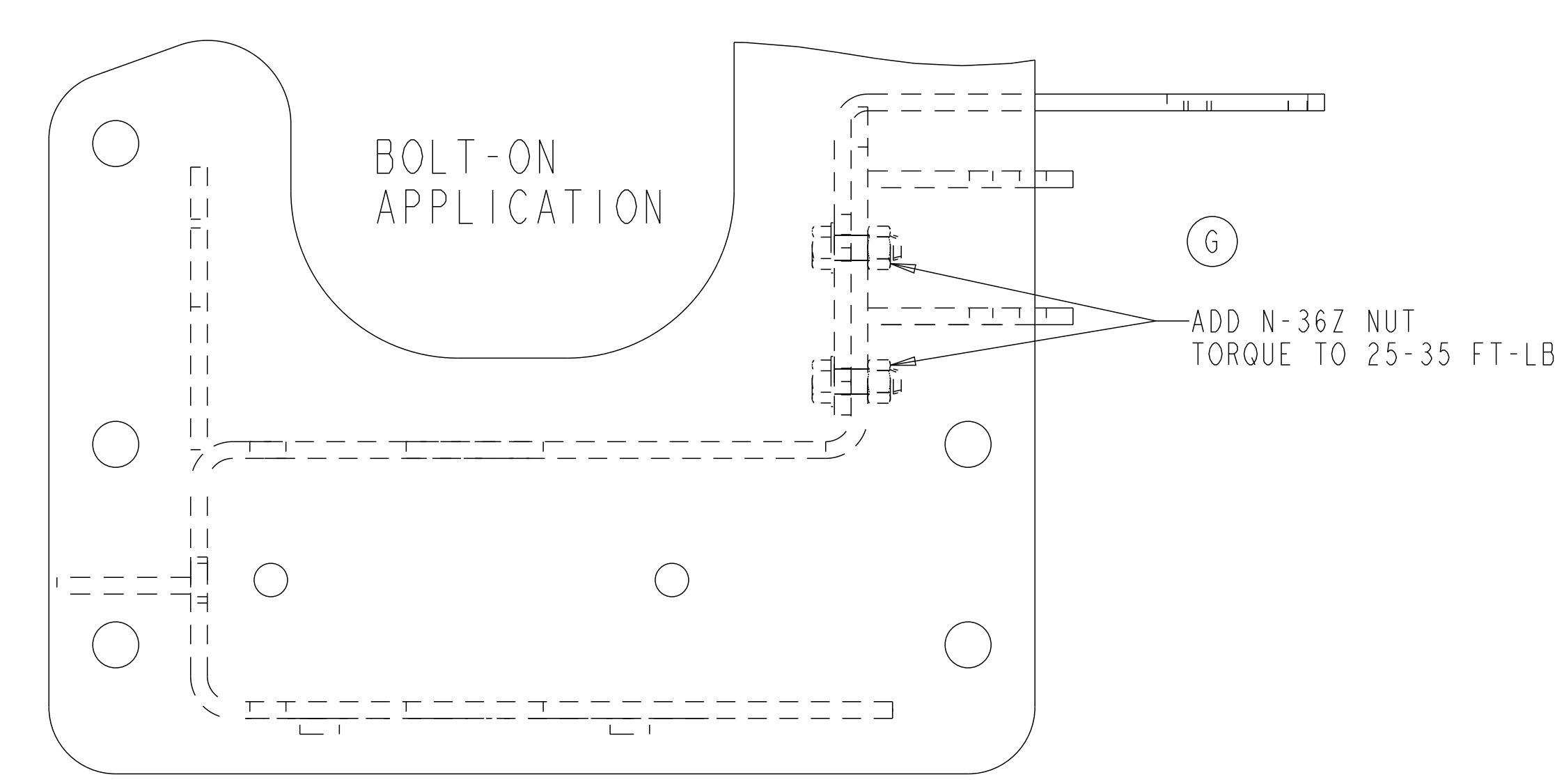
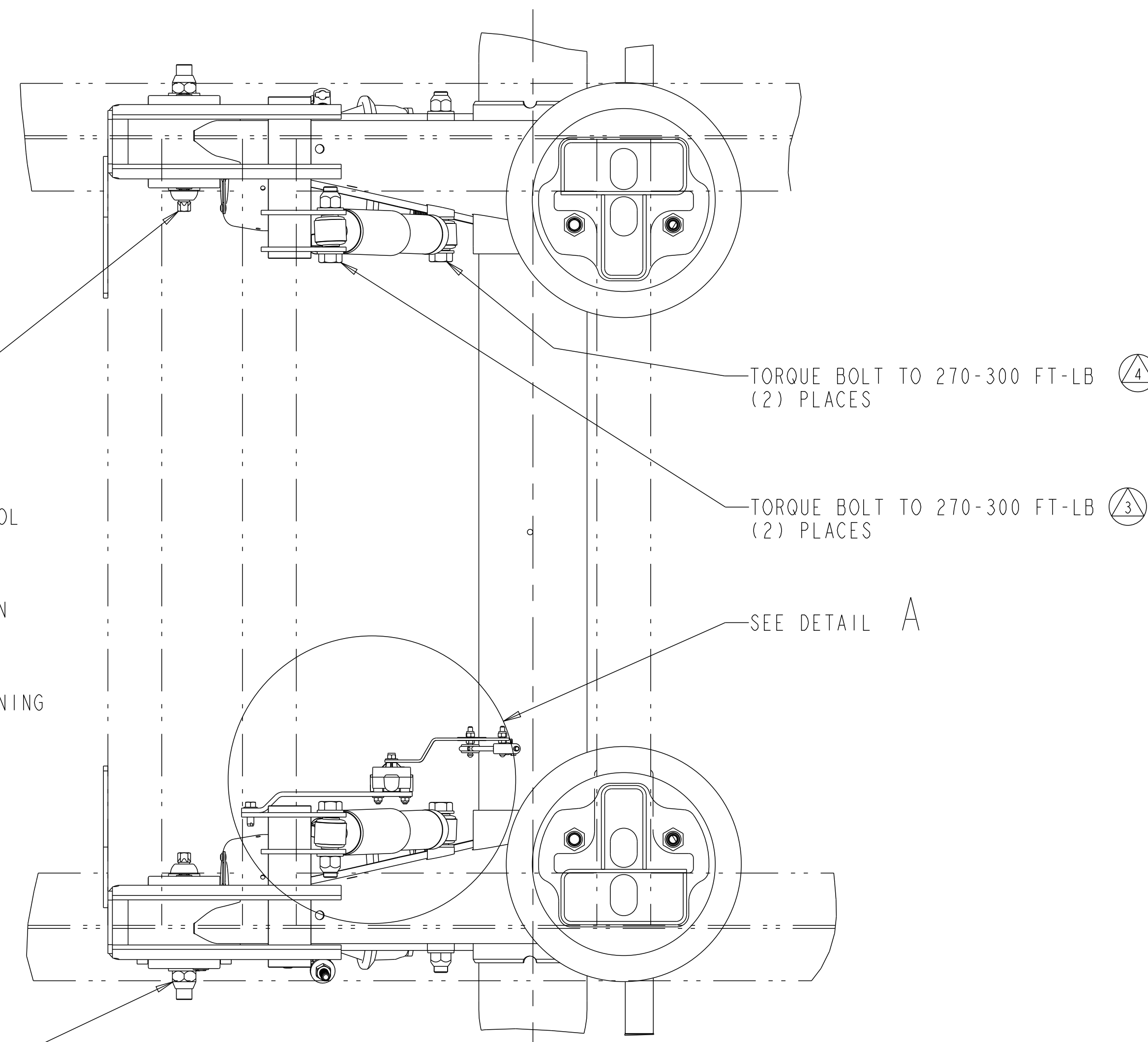
EXPORT_CONTROL: HARD_WARE=EAR - EAR99.EXPORT_CONTROL=EAR - EAR99

EXPORT_CONTROL: HARD_WARE=EAR - EAR99.EXPORT_CONTROL=EAR - EAR99

EXPORT_CONTROL: HARD_WARE=EAR - EAR99.EXPORT_CONTROL=EAR - EAR99

EXPORT_CONTROL: HARD_WARE=EAR - EAR99.EXPORT_CONTROL=EAR - EAR99

SIM. PARTS		4-60559_36	
REVISIONS			
A	RELEASE 4-60559_42 FOR PRODUCTION	ECN-130875 4/25/16	CH SS
B	UPDATED COMPONENTS TO LATEST. 1)REVISED NOTE 2)UPDATED ALL SHOCK LENGTHS 3)REVISED LINKAGE LENGTH	ECN-133727 13-DEC-17	CH VL
C	ADDED LINK LENGTH FOR 13.5 RIDE HEIGHT	ECN-145645 11-JAN-18	CH VL
D	UPDATED VIEWS TO LATEST TRAILING ARMS & PIVOT BOLT	ECN-155887 29-APR-19	CH SS
E	1 & 2)REVISED PIVOT BOLT TORQUE INSTRUCTIONS, 3)ADDED VIEW, 4)REVISED NOTE	ECN-164598 11-DEC-19	CH DL
F	1 & 2)CORRECTED SPELLING 3 & 4)WAS PIVOT NUT TORQUE	ECN-169453 24-JUN-20	CH SS
G	ADDED N-36Z NUTS FOR BOLT-ON APPLICATION	ECN-172650 20-OCT-20	CH SS



QUALITY CONTROL CHARACTERISTICS

(X)	DENOTES SAFETY RELATED CHARACTERISTIC
(A)	DENOTES MAJOR CHARACTERISTIC
(F3)	PIVOT NUT SHIPPING TORQUE
(F4)	SHEAR BOLT FINAL TORQUE
(4)	UPPER SHOCK BOLT TORQUE
(5)	LOWER SHOCK BOLT TORQUE
(6)	CAM BUSHING ASSY TORQUE
(7)	CAMS ROTATE FREELY AFTER CAM BUSHING ASSY TORQUED
(8)	SOCKET ENGAGEMENT

(E1) SHEAR BOLT USE E20 TORX SOCKET AND TOOL CAPABLE OF 600 FT-LBS. (REF. VALUE ONLY)

SHEAR HEAD TO BE LOCATED ON INBOARD SIDE OF HANGER

(F1) NOTE: FULL ENGAGEMENT OF E20 SOCKET IS REQUIRED DURNING FINAL TORQUE PROCEDURE

(A) FOR SHIPPING: WITH ECCENTRIC WASHER IN VERTICAL POSITION, TORQUE NUT TO 100-150 FT-LBS. (2) PLACES SEE DETAIL "C" FOR PROPER WASHER POSITION

(E2) (A) FOR FINAL INSTALLATION: TORQUE CURBSIDE PIVOT NUT TO 200 +/-50 FT-LBS. LOOSEN ROADSIDE PIVOT NUT ENOUGH TO ADJUST FOR ALIGNMENT. PERFORM ALIGNMENT PER MAINTAINANCE MANUAL USING 1/2" DRIVE SOCKET EXTENSION (OR EQUIVALENT) IN SQUARE HOLE. AFTER ALIGNMENT, TIGHTEN ROADSIDE NUT TO 200 +/-50 FT-LBS. PERFORM FINAL CHECK TO CONFIRM ALIGNMENT BEFORE TIGHTENING SHEAR BOLT UNTIL SHEAR HEAD SEPERATES. (2) PLACES

(F2)

DETAIL A SCALE 1:2

3/4-16 UNF NUT TORQUE TO 45-50 FT-LB (4) PLACES

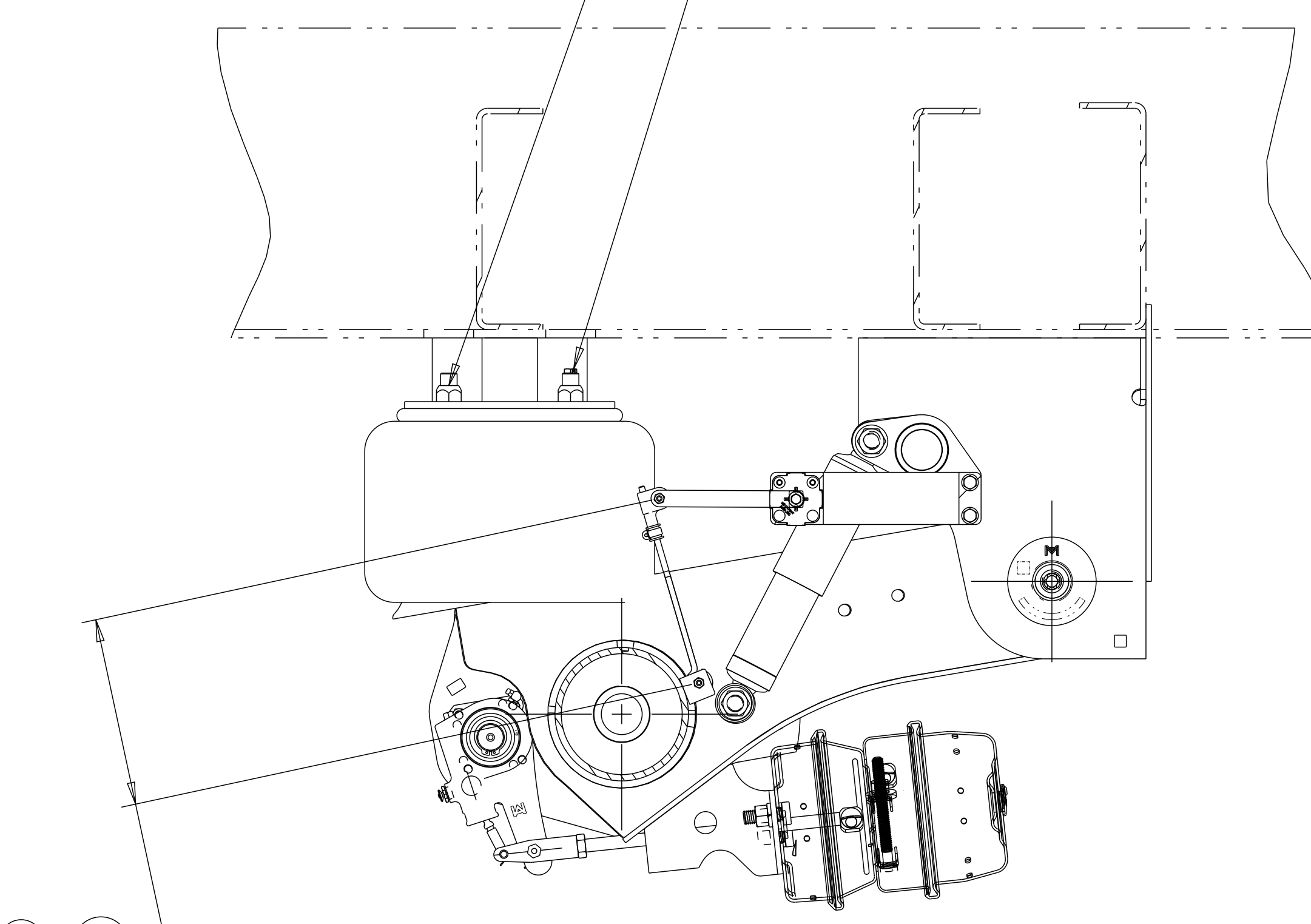
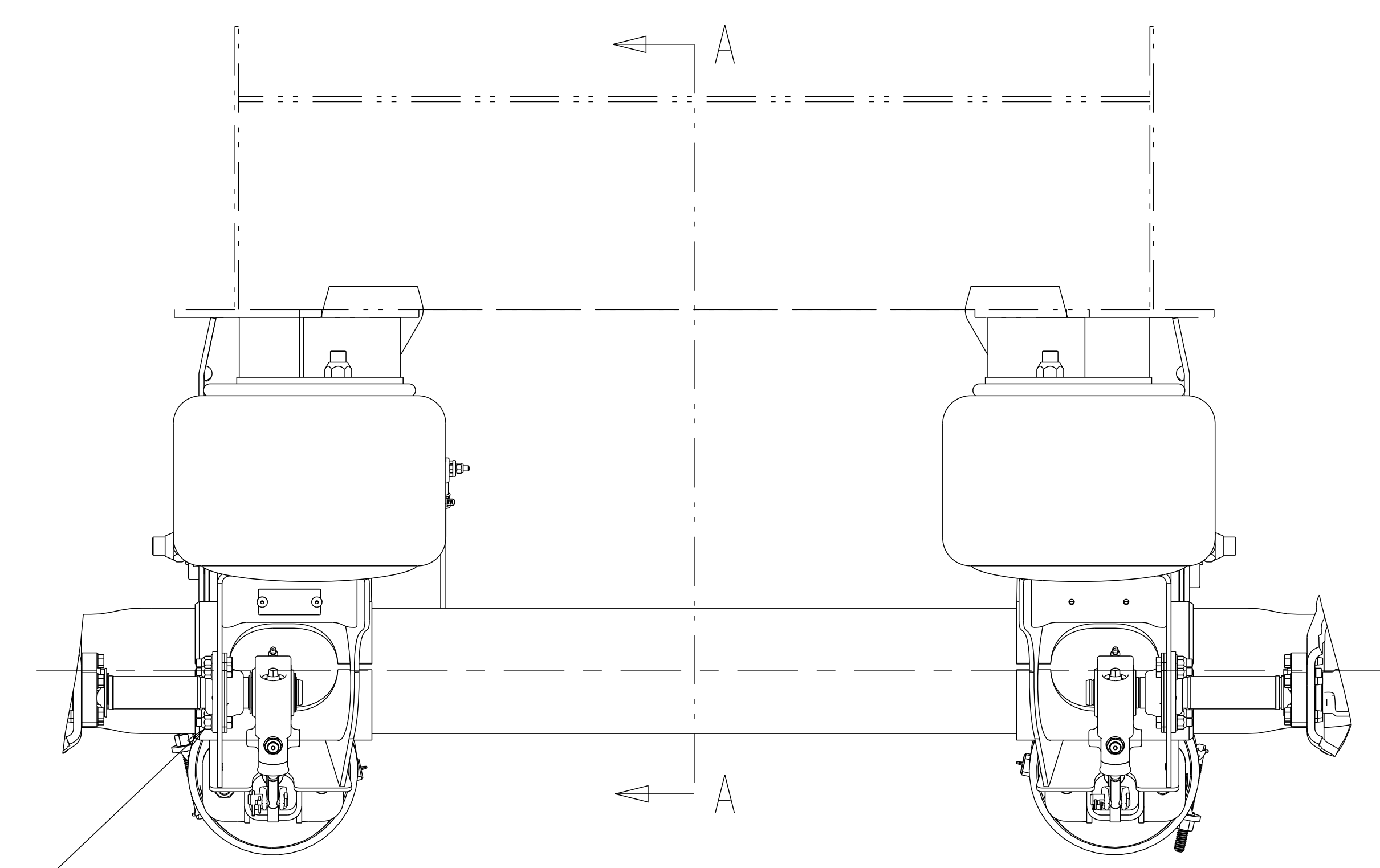
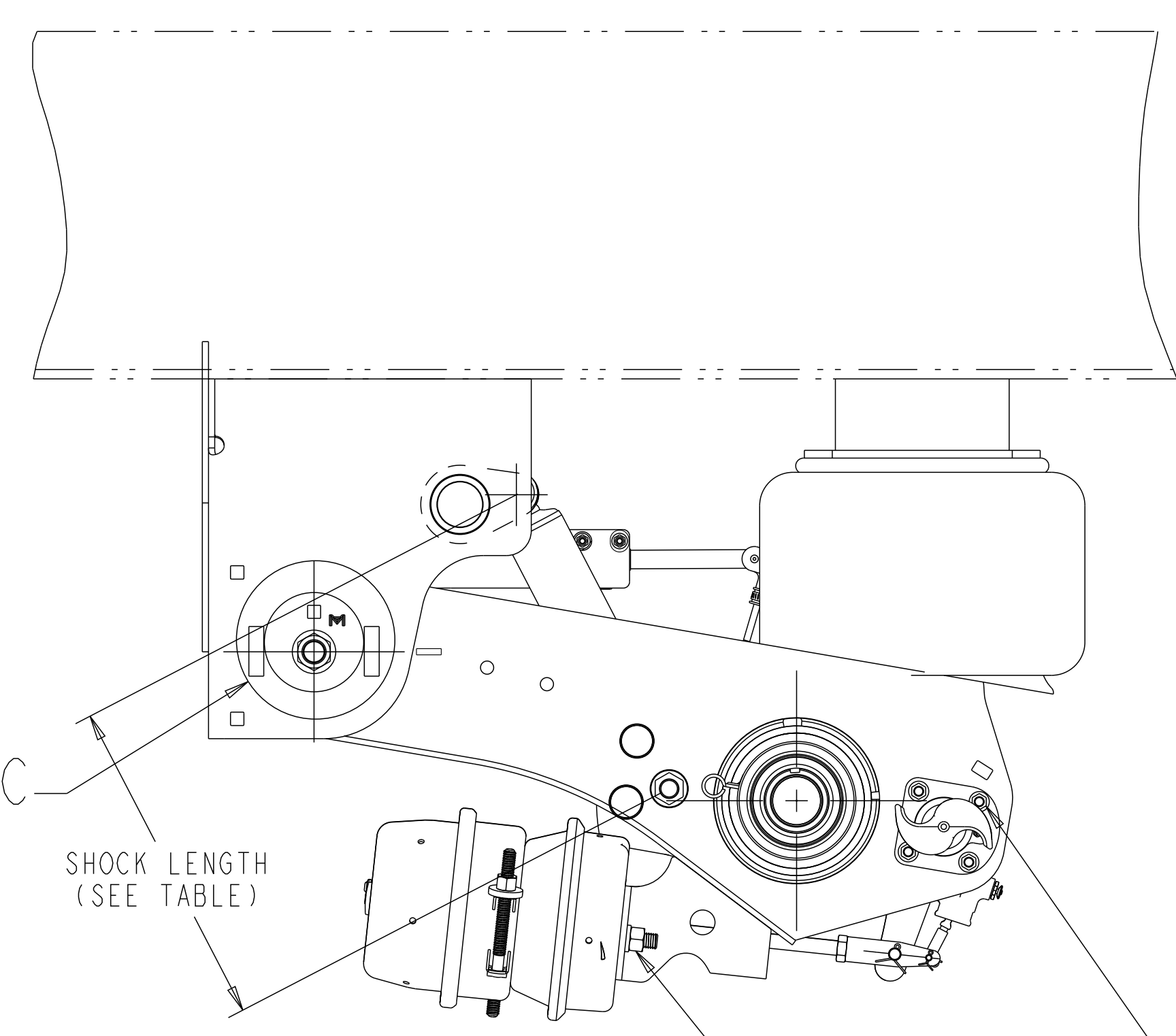
1/4-18 NPTF PLUG TORQUE TO 106-124 IN-LB

NOTE: CUSTOMER TO DECIDE WHICH PORT TO PLUG

CAD FILES

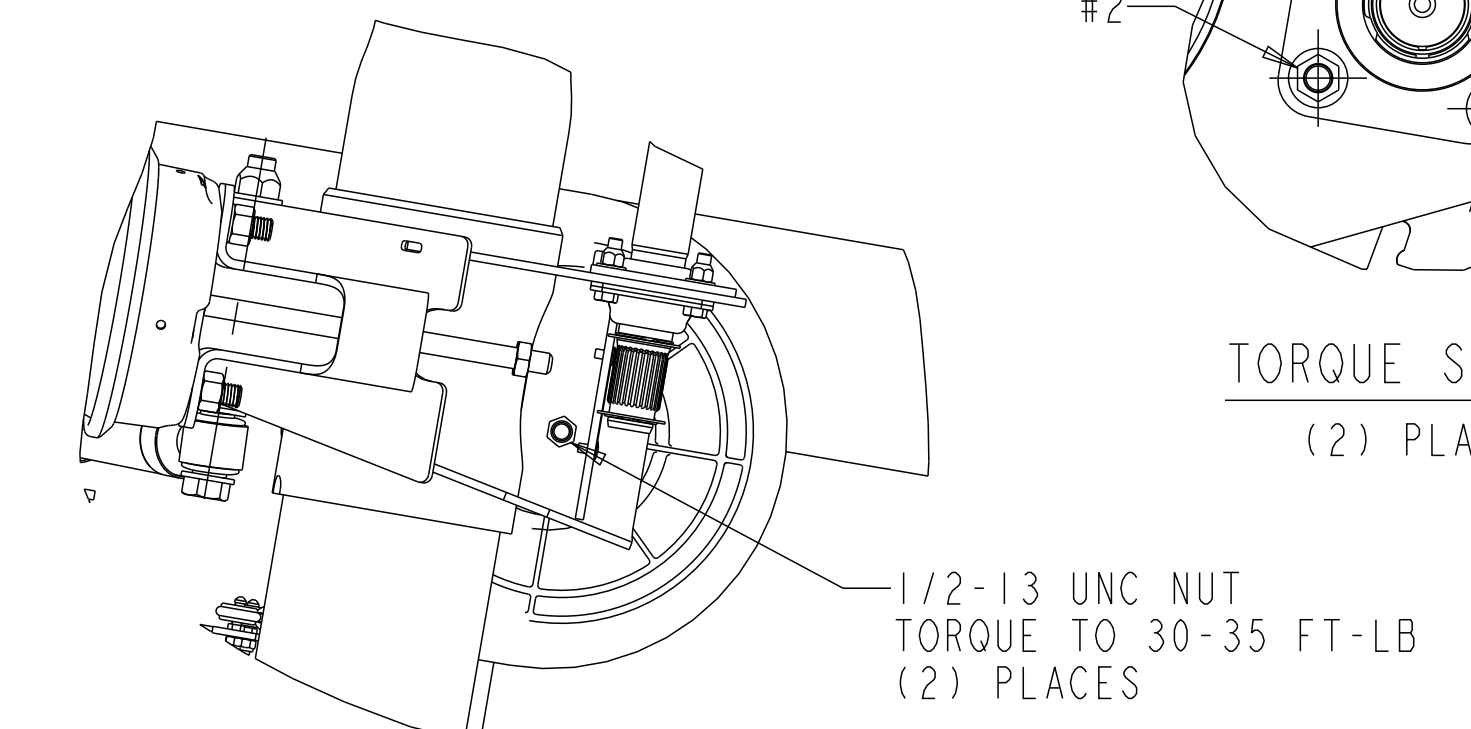
NAME	TYPE
4-60559_42 G.2	DRAWING
4-60559_42 G.2	MODEL

DO NOT CHANGE MANUALLY



USE SHOCK LENGTHS TO VERIFY RIDE HEIGHT

RIDE HEIGHT	SHOCK LENGTH
13.5	13.09
14.0	13.35
15.0	13.35
16.0	13.35
17.0	13.35



- (A) TORQUE TO 30-40 FT-LBS. (4) NUTS (2) PLACES PER TORQUE SEQUENCE
- (A) AFTER FINIAL TORQUE OF CAM BUSHING, CAMS MUST ROTATE FREELY

NOTES:
SOME COMPONENTS REMOVED FOR CLARITY
TORQUE ALL FASTENERS WITH SUSPENSION AT RIDE HEIGHT
REFER TO APPROPRIATE 4-60559 LAYOUTS TO OBTAIN AXLE COMPONENT TORQUE VALUES

SUSPENSION SERIES: MTA-Tec6-23T

APPLY SPECIFIED MERITOR MARKINGS PER DRAFTING ENGINEERING STANDARDS D-004	THIS PRINT IS LOANED ON A CONFIDENTIAL BASIS SUBJECT TO RETURN UPON DEMAND BY MERITOR AND NOTHING HEREON MAY BE REPRODUCED, USED OR DISCLOSED IN WHOLE OR IN PART WITHOUT THE PRIOR WRITTEN PERMISSION OF MERITOR.	MATERIAL: ...	PROCESS: ...	3RD ANGLE PROJECTION	DRAWING SIZE: E	SCALE: SAIEG	DESIGN CONTROL GROUP: 128762	CHANGE REQUEST: MTA-Tec6-23T	DRAWING NO: 19:100	TRAILER PRODUCTS NA	SHEET: 1 OF 1
SEE BILL OF MATERIAL FOR SPECIFIC INDIVIDUAL MODEL INFORMATION		ECN-130875	PART/DWG NO. 4-60559_42	00909	RELEASE	NAME LAYOUT - MTA-Tec6-23T	NO. DESG. PAGE 1 OF 1			INCH	