



Cummins Fire Pump Drives

**Certain performance in
uncertain situations**

About Cummins

We are a global power leader that designs, manufactures, distributes and services diesel and natural gas engines and powertrain-related component products. These include filtration, aftertreatment, turbochargers, fuel systems, controls systems, air handling systems, transmissions, electric power generation systems, batteries and electrified power systems.

We support our customers through a network of 500 wholly owned and independent distributor locations, and over 9000 certified dealers in more than 190 countries. We have been powering the world since 1919.

Dependable Engines for every application

We have been a driving force in the pumps industry for over four decades. We ensure reliable power with the right technology, backed by our vast global experience.

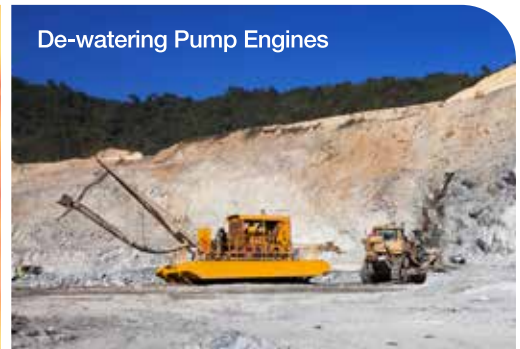
With customized value packages for a variety of pump applications to power a wide range from 90 to 1500 hp, we offer the latest technology engines with cooling, exhaust, air intake, and control systems fully integrated with the pump design for optimum performance.

From firefighting pumps to industrial pumps, Cummins is the preferred choice of Construction experts, OEMs, consultants, packagers, institutional buyers and a wide range of end-users.

Firefighting Pump Engines



De-watering Pump Engines



Industrial Pump Engines



Cummins Fire Pumps

FM/UL Certified Fire Pump drive engines for total peace of mind

A globally trusted manufacturer of premium, custom, diesel Fire pump packages, we specialize in the design, development and distribution of NFPA 20 compliant and UL-listed and FM-approved Fire Pump drive engines.



RELIABILITY

At Cummins, we understand that Reliability with consistent performance is critical for Fire Pumps. Our range of products provides full torque over a wide operating range. Looking at the criticality of applications, our FM/UL packages have dual ECM, a dual battery bank for uninterrupted operations. Offered with intuitive, user-friendly, mechanical as well as electronic state-of-the-art Fire pump Digital Panel (FPDP), providing total Fire Pump drive engine system integration.



SAFETY

Our Fire Pump drive engines are designed to help you power through building disasters. Whether, it be a small copier fire in the office or a major thermal event on an oil platform, millions around the world turn to us for fail-safe products and peace of mind.

The Cummins engine is UL 1247-listed and FM 1333-approved, the control panel complies with EMI/EMC emission norms. It has dual micro-processors for critical signal redundancy.

Some products have a manual ECM override and ECM A to B change-over switch to bypass the controller and run the engine in case of any controller issues during an emergency.



DISTRIBUTION NETWORK

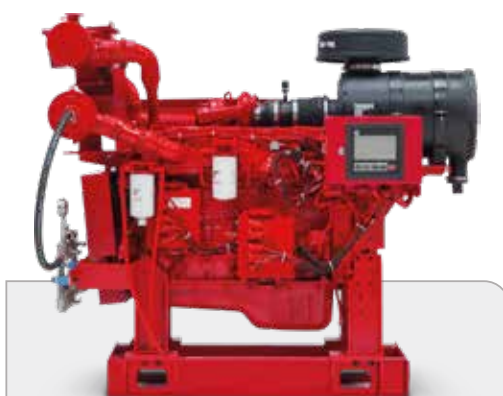
We provide expert services for power system start-up, trouble-shooting, parts, repairs and maintenance. Supported by factory engineers and our worldwide network of 9000 certified dealers in over 190 countries.



CFPI33



CFPI59



CFP7EI

FM/UL Certified Fire Pump Drives

CONTROL SYSTEM

Control System (Electronic Engine)

Control System - The industry-leading, state-of-the-art Fire Pump Digital Panel (FPDP) provides total fire pump drive engine system integration and intuitive operation, including:

- Color touchscreen
- Dual microprocessors for critical signal redundancy
- Standard J1939 parameter and Cummins fault code display
- Engine idling
- Electronic Control Module (ECM) self-diagnosis
- Optional Modbus® protocol remote messaging capability

Control System (Mechanical Engine)

- Analog display of engine parameters
- Microcontroller override system for critical signal redundancy
- Critical operation mode with Local/ Remote operating features
- Adjustable gauge setting system
- Soft switch starting arrangements



STARTING SYSTEM

12V Electric starting Motor mounted on the Engine flywheel housing with an electronic soft switch on the Control panel to Crank either Battery 1 or Battery 2. Manual starting battery contactor switch provided for an emergency start



COOLING SYSTEM

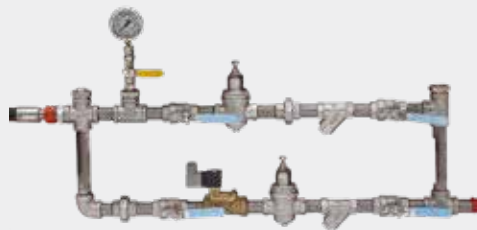
- Heat Exchanger designed to withstand 150% of working pressure suitable for usage of raw water
- Coolant heater suitable to maintain jacket water temperature above 49°C during engine standby condition.
- FM approved Cooling Loop



Heat exchanger



Coolant heater



Cooling loop

INTAKE AND EXHAUST SYSTEM

- Air filter with dual stage filtration providing durability and easy availability globally for filter replacement
- Industrial grade Muffler with Spark arrester
- Flexible Bellow



Air Filter



Muffler

OTHER OFFERINGS

- 8mm thick Front and Rear mounting bracket lug type fabricated for high rigid support with an option to add base frame and drive shaft (listed/ non-listed)
- Coupling (non-listed)

Components subject to change based on specific models. For more information email us on care.cummins@cummins.com



Cummins India FM approved and UL listed products*

Model Name	Engine Model	1470	1760	2100	2350	2600	2800	3000
CFPI33-F10-1	B3.3	79						
CFPI33-F10-2	B3.3	75						
CFPI33-F10-3	B3.3	65						
CFPI33-F10-4	B3.3	55						
CFPI33-F10-5	B3.3	41						
CFPI33-F20-1			84					
CFPI33-F20-2		75	76					
CFPI33-F20-3		65	65					
CFPI33-F20-4		55	55					
CFPI33-F20-5		41	41					
CFPI33-F30-1					88	88	88	88
CFPI33-F30-2				84	84	84	84	84
CFPI33-F30-3				76	76	76	76	76
CFPI33-F30-4				65	65	65	65	65
CFPI33-F30-5				55	55	55	55	55
CFPI33-F30-6				41	41	41	41	41

All ratings are mentioned in hp

*In view of continuous product improvement, materials and specifications are subject to change without prior notice.
For more information, email us on care.cummins@cummins.com



Model Name	Engine Model	1470	1760	1900	2100	2350	2600	2800	3000
CFP7EI-F10	QSB6.7	153	175	162	171	172	174		
CFP7EI-F20	QSB6.7	166	190	176	185	187	189		
CFP7EI-F30	QSB6.7	177	205	190	200	201	204		
CFP7EI-F40	QSB6.7	192	220	204	215	216	219		
CFP7EI-F50	QSB6.7	205	235	218	229	231	234		
CFP7EI-F60	QSB6.7	218	250	232	244	245	249		
CFP7EI-F15	QSB6.7							189	191
CFP7EI-F25	QSB6.7							202	204
CFP7EI-F35	QSB6.7							216	219
CFP7EI-F45	QSB6.7							231	234
CFP7EI-F55	QSB6.7							248	250
CFP7EI-F65	QSB6.7							263	268

Globally available FM approved and UL listed products

Model Name	1470	1760	1900	2100	2250	2300	2350	2600
CFP5E-F10	84	95	98	101			105	104
CFP5E-F20	94	107	110	113			118	117
CFP5E-F30	104	118	121	125			130	129
CFP5E-F40	113	123	129	136			143	141
CFP5E-F50	113	129	135	146			150	148
CFP7E-F10	153	175	162	171			172	174
CFP7E-F20	166	190	176	185			187	189
CFP7E-F30	177	205	190	200			201	204
CFP7E-F40	192	220	204	215			216	219
CFP7E-F50	205	235	218	229			231	234
CFP7E-F60	218	247	232	244			245	249
CFP9E-F10	215	260	275	246		224		
CFP9E-F20	233	282	299	268		244		
CFP9E-F30	252	305	323	289		264		
CFP9E-F40	271	327	347	311		284		
CFP9E-F50	291	350	363	335		304		
CFP9E-F65		380						
CFP9E-F75		401						
CFP9E-F85		410						
CFP15E-F10	382	460	488	488	380			
CFP15E-F20	410	494	524	525	409			
CFP15E-F30	450	536	575	564	418			
CFP15E-F70		686						
CFP23E-F10		698						
CFP23E-F15		698	722	751				
CFP23E-F20		753						
CFP23E-F25		755	774	801				
CFP23E-F30	724	801						
CFP23E-F35		770	798	840				
CFP23E-F40	747	850						
CFP23E-F50	752	925						
CFP23E-F60		1000						
CFP23E-F70		1075						
CFP30E-F10		1087	1025	907				
CFP30E-F20		1137	1115	997				
CFP30E-F30		1187	1205	1087				
CFP30E-F40		1237	1295	1177				

All ratings are mentioned in hp

*In view of continuous product improvement, materials and specifications are subject to change without prior notice.
For more information, email us on care.cummins@cummins.com

Global Support Network



With one of the largest support networks in the world, Cummins can provide customers with the assurance that support is always available, no matter their location.



Cummins India Ltd.

Regd Office: Cummins India Office Campus, Tower A & B, Survey No. 21, Balewadi, Pune – 411 045, Maharashtra, India

Tel.: +91 20 67067000 | care.cummins@cummins.com | www.cumminsindia.com |   