



TO: JACOBS WAREHOUSE DISTRIBUTORS
JACOBS FIELD PERSONNEL

DATE: FEB 22, 1994

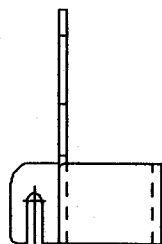
EXTARDER PRODUCT ADVISORY
94-4

SUBJECT: MODEL EXB59 and EXC83 ENGINE CONTROL GROUP
P/N 19429 & 19598

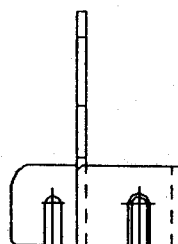
All Extarder kits containing Engine Control Groups P/N 19429 & 19598, shipped after February 22, 1994 will contain a new Switch Bracket P/N 20149. This bracket replaces P/N 19048. In addition, two (2) Hex Head Screws P/N 20180, used to mount the Switch P/N 18188 to the new bracket, have been added to the control group. This change has no effect on the mounting on the fuel pump switch arrangement to the fuel pump.

The new bracket/screw arrangement is interchangeable with the old bracket/screw arrangement.

The new bracket is illustrated below.



P/N 020149 (NEW)
USE W/SCREWS P/N 020180



P/N 019048 (OLD)

This is a product improvement and not subject to campaign.

Product Marketing

PRODUCT ADVISORY



TO: JACOBS WAREHOUSE DISTRIBUTORS
JACOBS FIELD PERSONNEL

DATE: FEB 3, 1994

EXTARDER PRODUCT ADVISORY
94-3

SUBJECT: MODEL EXB59 and EXC83 ENGINE CONTROL GROUP
P/N 19429 & 19598

We have received isolated reports of a failure with the Fuel Pump Switch Bracket, P/N 19048 contained in the Control Group P/N 19598 & 19429.

In order for Jacobs to determine the root cause of this failure and arrive at a complete solution we need additional information.

If you have experienced any problems with this component, please provide the following details.

- A. Vehicle manufacturer and model.
- B. Engine [Cummins B OR C]
- C. What failed on the bracket?
- D. Have there been repeat failures on the specific vehicle.

Your assistance in the matter will help Jacobs to respond in an expeditious manner.

Note: Please submit a Warranty Claim for any failures.

Product Marketing

PRODUCT ADVISORY