

Service Letter

Service Letter No. 437 May, 1995

SUBJECT: New Auto-Lash® Assemblies

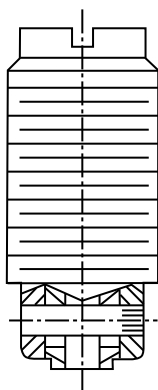
MODELS AFFECTED: 425A, 430

New Auto-Lash Adjusting Screw Assemblies for Cummins engines will be used in Models 425A and 430 engine brake housing assemblies, and will be available as service parts as noted below:

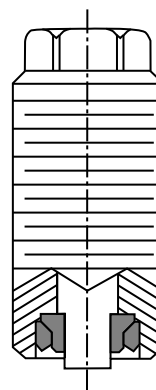
Engine Model	Existing Auto-Lash Part Number	New Auto-Lash Part Number	Color Code	Effectivity Date
425A	015790	020509	White	Immediately
430	016012	020511	Red	Immediately

The new Auto-Lash Adjusting Screw Assemblies for Cummins engines (P/N 020509 and 020511) have a hex head instead of a slotted head as shown below. This change will allow the lash adjustment to be made by either a dial indicator or a feeler gage (see the installation manual for proper lash adjustment settings). In addition, the crosspin on all the assemblies has been removed and replaced by a pressed sleeve. These parts are interchangeable and both styles can be used in a Jacobs engine brake housing assembly.

This is a Jacobs product improvement and not subject to campaign.



Existing Style



**New Style
P/Ns 020509 & 020511**