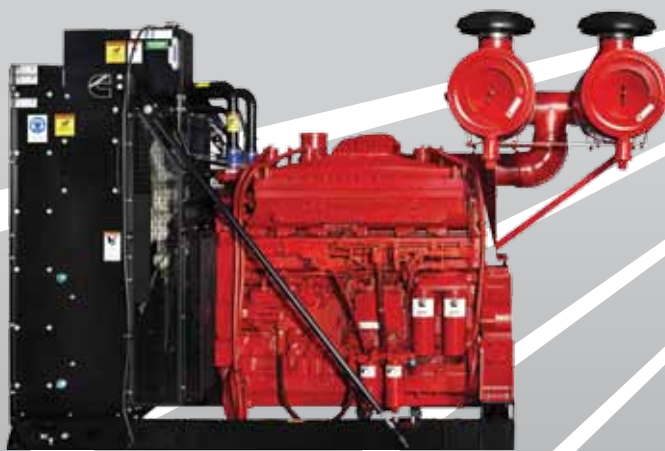
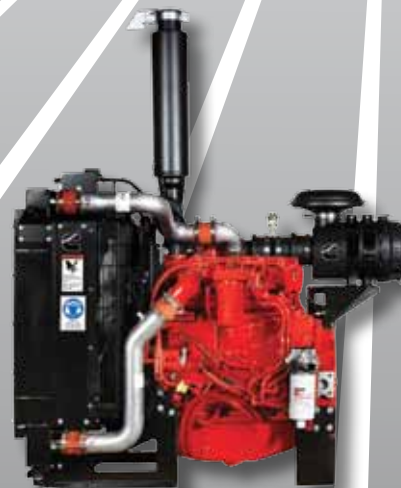


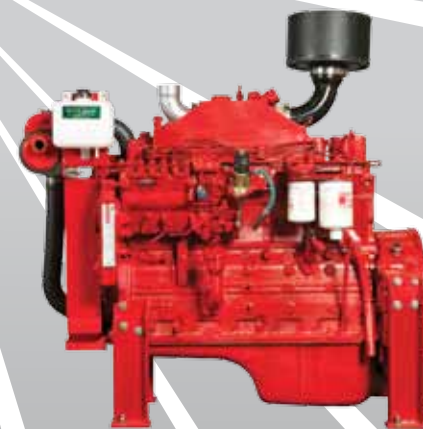
A Pak for all reasons.
Cummins powerpacks.



CustomPak.



ComPak.



FirePak.

Cummins Pak Power **you can depend on.**

Since 1919 Cummins has been a **pioneer in diesel engine technology**. An inherent passion for innovation drives the development of leading power solutions used all across the globe.



Cummins powerpacks - fully engineered, self-contained units **designed and built in Australia**, with ratings from 40 to 2000 hp. They are fully customisable to suit your needs.



Cubbie Station
powered by
Cummins QSK19
CustomPaks

CustomPak.

Modular design enables you to select the matched powerpack components to suit your application.

Choose from:

QUANTUM full electronic Tier 3 stage IIIa emissions certified range covering 40 hp to 950 hp.

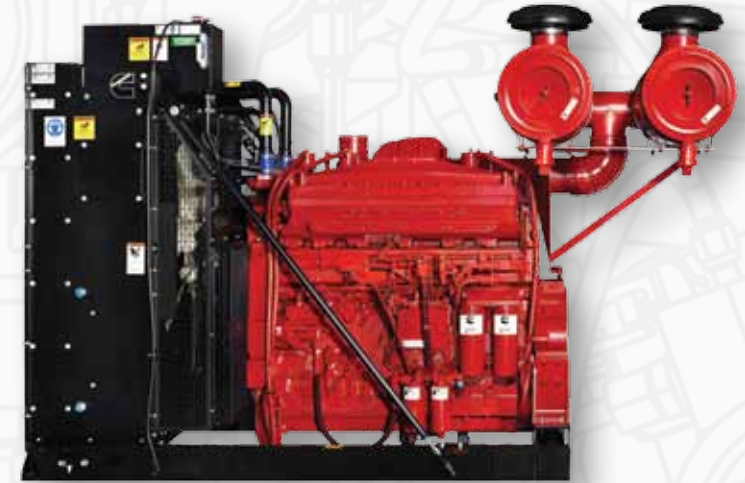
Mechanical range covering 65 hp to 260 hp.

All Cummins CustomPak models utilise the following:

- Heavy-duty industrial cooling packages rated to operate continuously in ambient temperature in excess of 50°C
- Heavy section structural steel base rails
- Heavy-duty dual element air cleaners with restriction indicators
- Industrial mufflers
- Cummins approved control panels available to suit both mechanical and Quantum electronic engines, for both industrial and irrigation applications.

Options ranging from basic key start through to customisable premium auto/remote start and monitoring, Modbus communications and OEM input compatibility, with full control of your engine, including display of engine parameters, critical faults and OEM equipment protection.

CustomPak				
MODEL	EMISSIONS LEVEL	RANGE (HP)	RANGE (kW)	RPM
QSF2.8 NA	EU 3a	46 - 58	35 - 43	2500
QSF2.8 T	EU 3a	60 - 72	46 - 54	2400
B3.3T3	T3	65 - 85	56 - 63	2600
QSB3.3	T3	80 - 99	60 - 74	2600
QSB4.5	T3	110 - 160	82 - 119	2500
QSB6.7	T3	133 - 260	99 - 194	2500
QSB8.3	T3	245 - 305	183 - 227	2200
QSL9	T3	280 - 325	209 - 242	2100
QSMT3	T3	300 - 400	224 - 298	2100
QSX530	T3	375 - 530	279 - 395	2100
QSX600	T3	560 - 600	418 - 447	2100
QSK19	T1	650 - 760	484 - 566	2100
QSK23	T1	760 - 950	567 - 708	2100
6BTA-152	T2	152	113	2500
6BTA-177	T2	177	132	2500
6CTA-260	T2	260	194	2200



QSK19 CustomPak



QSF2.8 T CustomPak



QSB6.7 CustomPak

ComPak.

The compact alternative. Designed to suit those applications where space is at a premium. QUANTUM full electronic Tier 3 stage IIIa emissions certified range covering 65 hp to 325 hp.

All Cummins ComPak models utilise the following:

- Heavy-duty industrial cooling packages rated to operate continuously in ambient temperature in excess of 50°C
- Pedestal mounting legs
- Heavy-duty dual element air cleaners with restriction indicators
- Industrial mufflers
- Cummins approved control panels available to suit both mechanical and Quantum electronic engines, for both industrial and irrigation applications.

Options ranging from basic key start through to customisable premium auto/remote start and monitoring, Modbus communications and OEM input compatibility, with full control of your engine, including display of engine parameters, critical faults and OEM equipment protection.

ComPak				
MODEL	EMISSIONS LEVEL	RANGE (HP)	RANGE (kW)	RPM
B3.3T3	T3	65 - 85	56 - 63	2600
QSB3.3	T3	80 - 99	60 - 74	2600
QSB4.5	T3	110 - 160	82 - 119	2200
QSB6.7	T3	133 - 260	99 - 194	2500
QSB8.3	T3	245 - 305	183 - 227	2200
QSL9	T3	280 - 325	209 - 242	2100



QSB4.5 ComPak



QSL9 ComPaks



QSB3.3 and QSB4.5 ComPaks

FirePak.

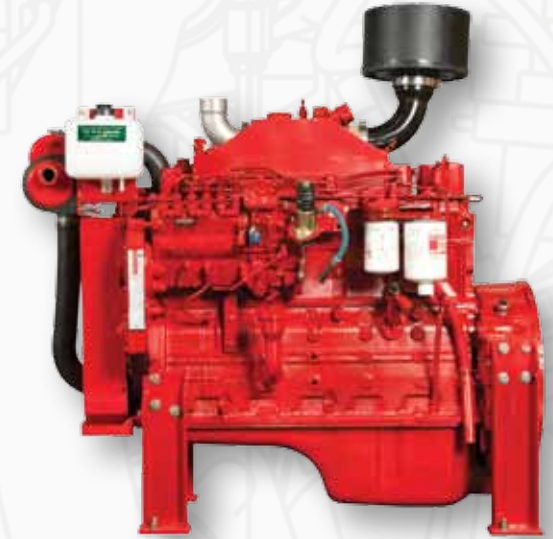
Designed specifically to meet the requirements of the Australia, New Zealand and the South Pacific fire protection industry.

Mechanical range covering 100 hp to 260 hp.

All Cummins FirePak models utilise the following:

- Fully compliant with Australian standard AS2941 & New Zealand standard NZS4541/2007
- Pedestal mounting legs
- Industrial air cleaner
- Industrial grade copper tube heat exchangers with belt and alternator guarding
- 90 degree exhaust elbows
- Throttle adjustment and lock

FirePak				
MODEL	EMISSIONS LEVEL	RANGE (HP)	RANGE (kW)	RPM
4BTA-100	T2	100	74	2500
4BTA-130	T2	130	97	2500
6BTA-152	T2	152	113	2500
6BTA-177	T2	177	132	2500
6CTA	T2	260	193	2200



6BTA FirePak



6BTA FirePaks



Supported **everywhere.**

Warranty coverage.

Cummins' base engine coverage is two years or 2,000 hours of operation, or one year/unlimited hours of operation, whichever comes first. It covers:

- Full parts and labour on warrantable failures.
- Consumables not reusable due to warrantable failures.

Extended major components coverage is three years or 10,000 hours of operation, whichever occurs first from the delivery date, and becomes active at the expiry of the base engine warranty. It covers:

- Warrantable failures of covered components.

Bushing and bearing failures not included.

Package units – CustomPak – FirePak – ComPak

When a product is defined as a package unit, all components of the product which were purchased from Cummins South Pacific as a packaged product have the same base engine warranty coverage as the engine.

Package units built by Cummins South Pacific when the following components, as a minimum, are purchased from Cummins:

- Engine
- Pedestal feet
- Cooling packages
- Fan

Conditions apply. Full warranty details can be found in the Industrial Cummins Warranty brochure (Bulletin 3381322).



Cummins at your service.
24 hours a day, 365 days a year.

Global Power Leader, **unmatched local support.**

AUSTRALIA

New South Wales

Sydney 02 9616 5300

Queensland

Brisbane 07 3710 4700

South Australia

Adelaide 08 8368 4300

Victoria/Tasmania

Laverton 03 8368 0800

Western Australia/ Northern Territory

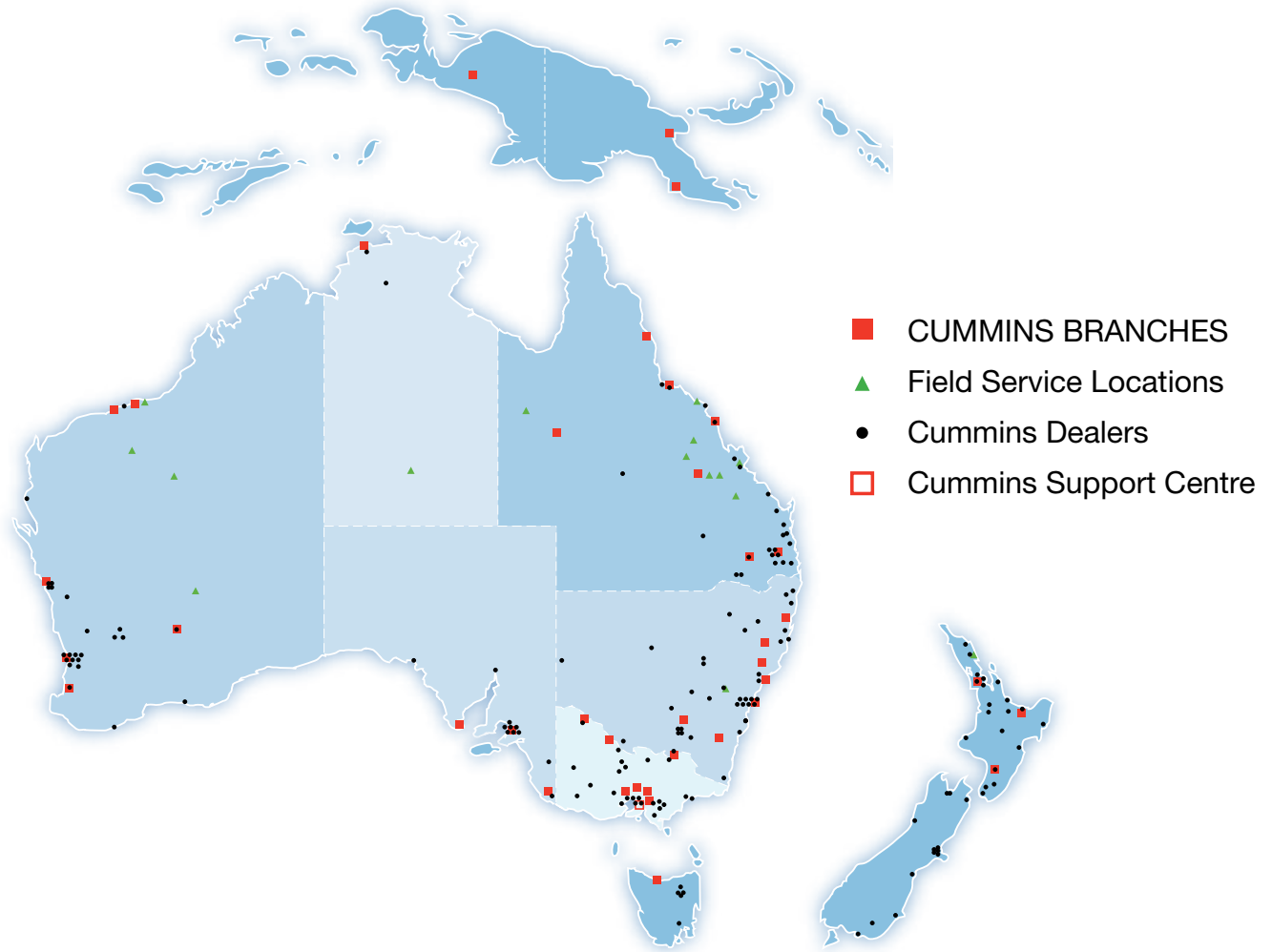
Perth 08 9475 8777

NEW ZEALAND

Auckland 09 277 1000

PAPUA NEW GUINEA

Lae 05 475 7000



For Australia

1300Cummins
Ph 1300 286 646

For New Zealand

0800Cummins
Ph 0800 286 646

www.cummins.com.au