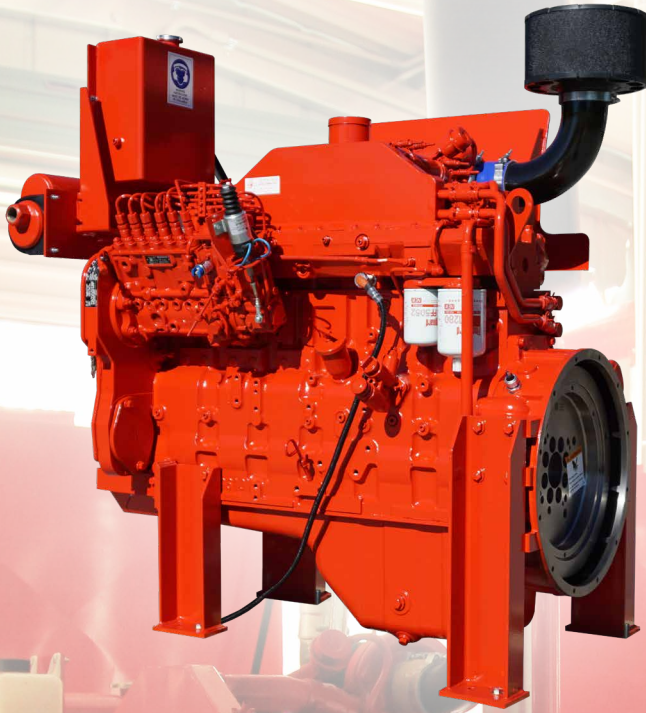


EVERY SECOND.

6BTAC177 FIREPAK



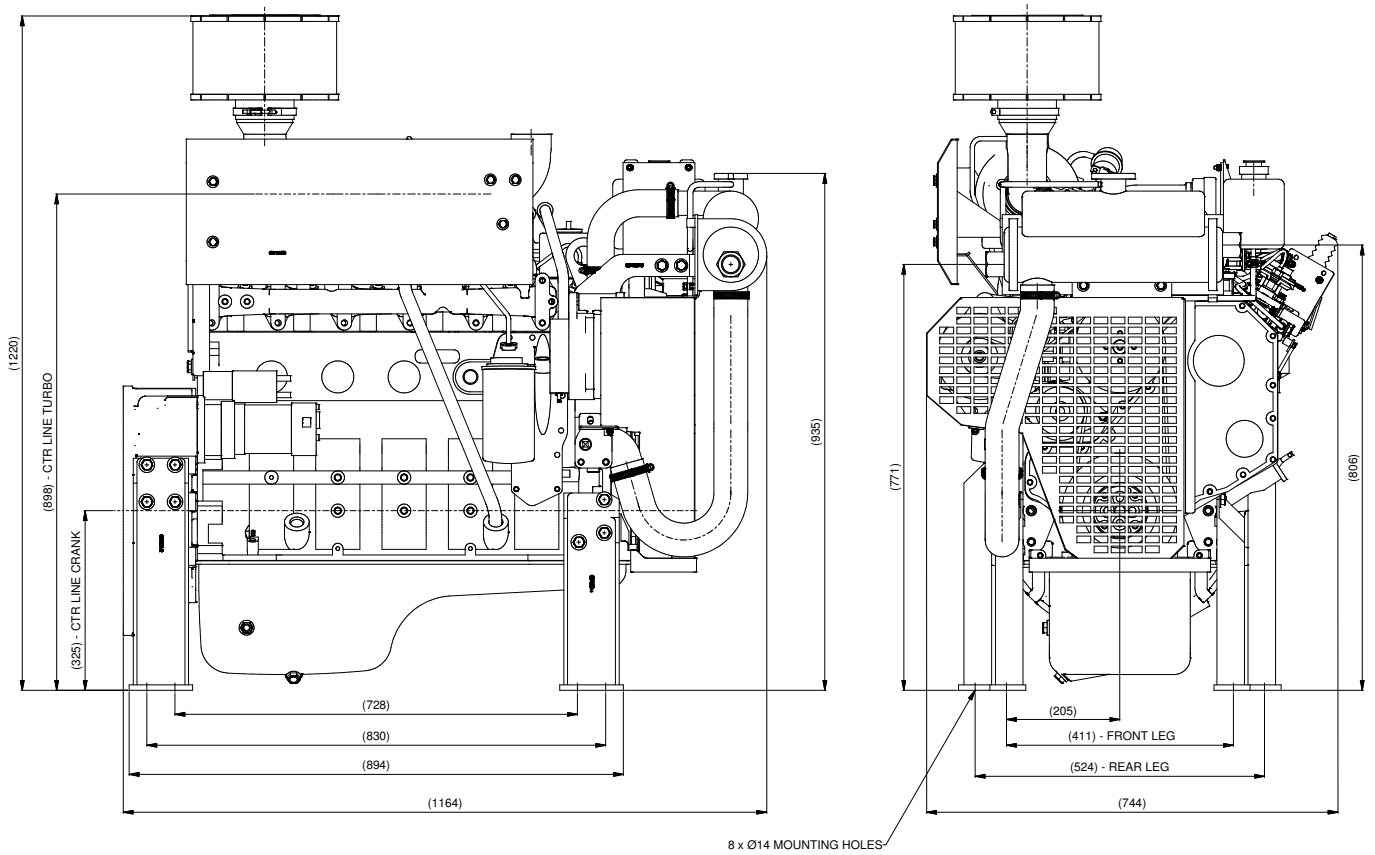
SPECIFICATIONS

Type	Four-stroke Cycle, Turbocharged, In-Line, Six Cylinder Diesel Engine	
	US STD	METRIC
Power Rating	177 BHP	132 kW
Rated Speed	2500 RPM	2500 RPM
Peak Torque	465 lb ft	630 Nm
Peak Torque RPM	1500 RPM	1500 RPM
Bore & Stroke	4.02 in x 4.72 in	102 mm x 120 mm
Piston Displacement	360 cu in	5.9 L
Oil System Capacity	4.3 US gal	16.3 L
Coolant Capacity	4.5 US gal	16.8 L
Fire Pak Weight (Wet)	1213 lb	500 kg
Voltage	24 volt	24 volt



**FOR
A WORLD
THAT'S
ALWAYS ON™**

SCHEMATICS

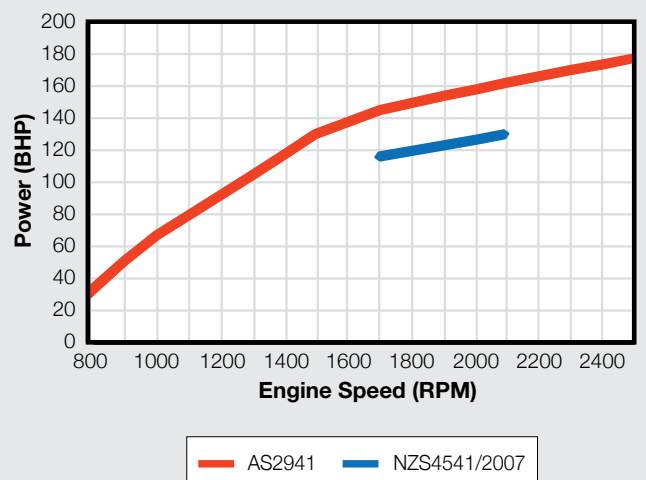


RATINGS

RPM	AS2941		NZS4541	
	BHP	kW	BHP	kW
800	35	26		
1000	67	50		
1300	105	78		
1400	118	88		
1500	130	97		
1700	145	108	116	86
1900	154	115	123	92
2100	162	121	130	97
2300	170	127		
2500	177	132		

Performance figures shown are SAE and do NOT include Cooling Fan and other parasitic losses. Specifications may change without notice.

PERFORMANCE CURVE



6BTAC177 FIREPAK

KEY FEATURES

- **Reliability -**
Proven engine design utilised in a wide range of applications, backed by Cummins' unmatched warranty and service network.
- **Air cleaner -**
Standard duty industrial air cleaner.
- **Mounting legs -**
Heavy section 4 point pedestal mounting legs for ease of installation to sub-base frames.
- **Cooling System -**
Industrial grade, copper tube heat exchanger with belt and alternator guarding.
- **240 Volt block heater as standard**
- **Exhaust -**
90 degree exhaust elbow as standard.
- **Turbo heat shield as standard**
- **Electrical system -**
24 Volt Electrics with activate to stop fuel valve.
- **Speed control -**
Throttle adjustment and lock.
- **AS2941-2013 and NZS4541/2007**

WARRANTY COVERAGE

Cummins base Engine coverage is 2 years or 2,000 hours of operation, or 1 year/unlimited hours of operation, whichever comes first.

All components of the FirePak which were purchased from Cummins South Pacific as a packaged product have the same Base Engine Warranty coverage as the Engine.

Extended Engine Major Components coverage is 3 years or 10,000 hours of operation, whichever occurs first.

Conditions apply. Full warranty details can be found in the Industrial Cummins Warranty brochure (Bulletin 3381322).

THE CUMMINS CARE EXPERIENCE

- At your service. 24 hours a day, 365 days a year.
- Unmatched factory-owned service support network with 35 Cummins branches and more than 150 authorised dealers across the South Pacific region.
- At the heart of our service operation is the Cummins Support Centre which boasts a team of highly experienced service technicians who will keep you Always On.

**BREAKDOWN AND DIAGNOSTIC SUPPORT
PRODUCT AND SERVICE
TECHNICAL SUPPORT
PARTS ORDERING
DIGITAL PRODUCTS
& SERVICES
CONNECTED PRODUCT SUPPORT**



CARE.CUMMINS.COM

Access our extensive knowledge database, download data sheets, perform an advanced search of our website and use the contact form to email us.



EMAIL

1300cummins@cummins.com

Email allows users to connect with agents online in a multitude of languages.



For Australia

1300Cummins
Ph 1300 286 646

For New Zealand

0800Cummins
Ph 0800 286 646

To speak directly with the Cummins Care team for breakdown support, parts orders, product inquiries, diagnostic and one-on-one technical support, 24 hours a day 365 days a year.



For more information
scan here



Cummins Head Office
2 Caribbean Drive
Scoresby VIC 3179
Australia

cummins.com

CPR1069 Produced in Australia. 8/22
©2022 Cummins South Pacific Pty Ltd.