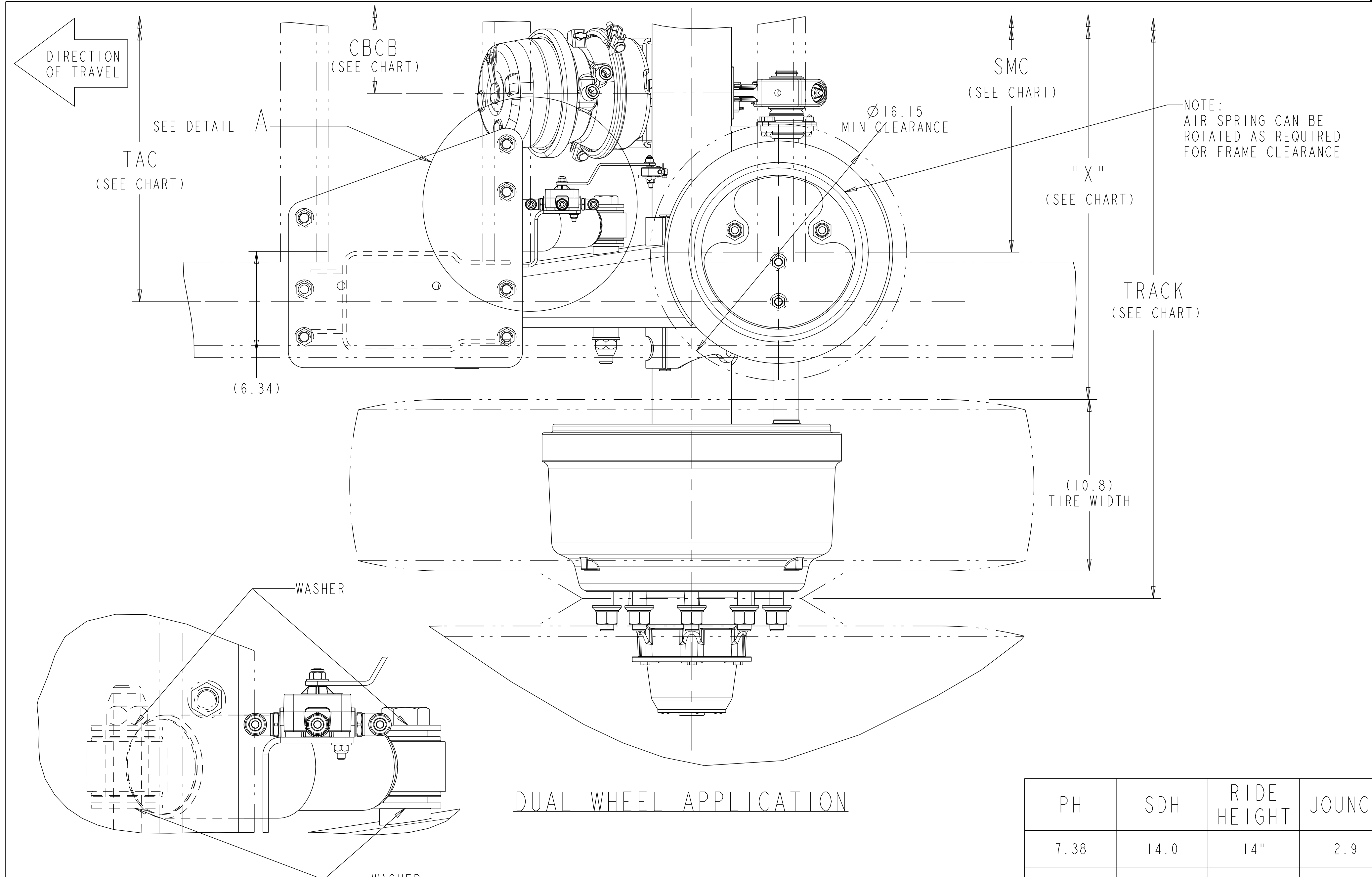
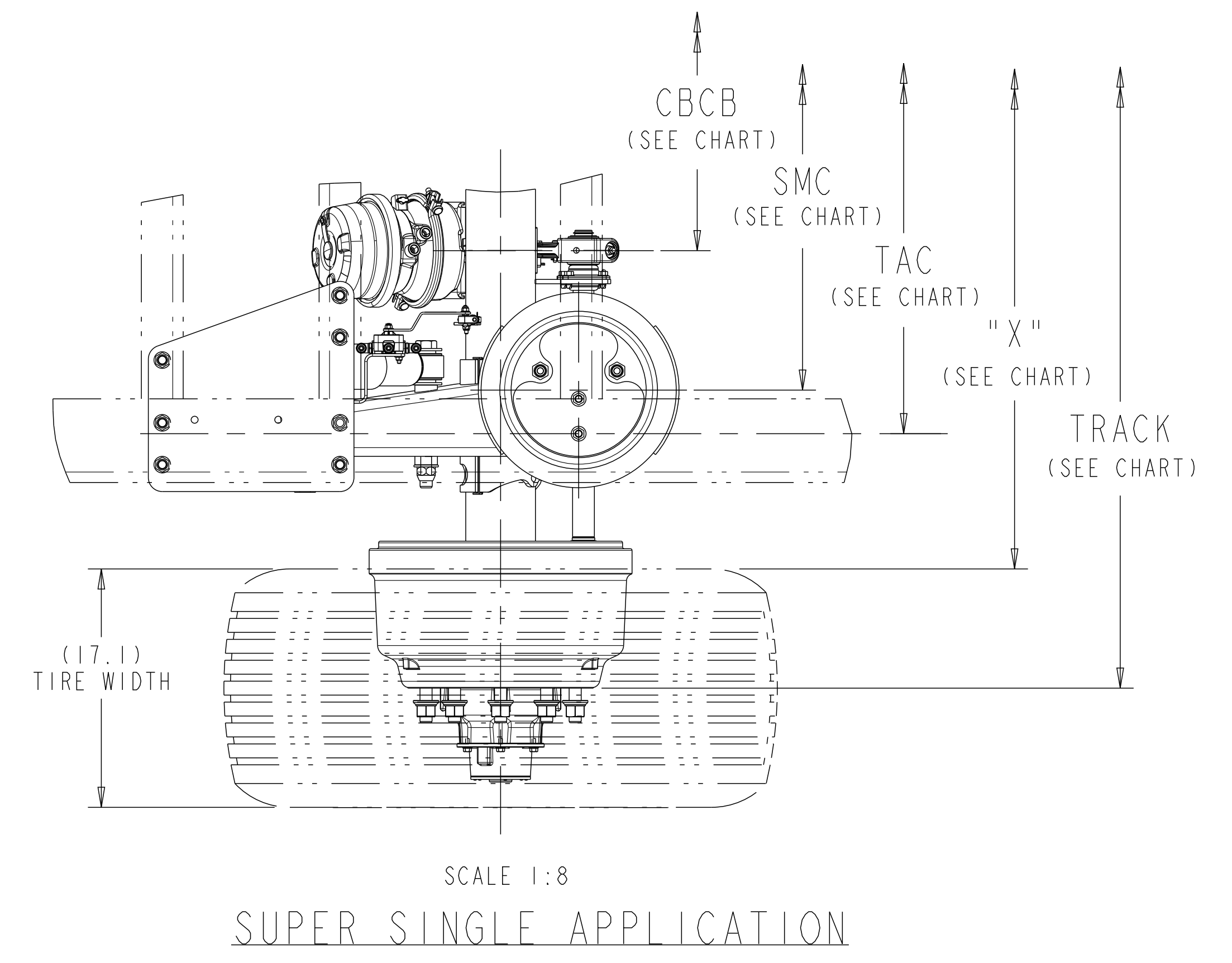
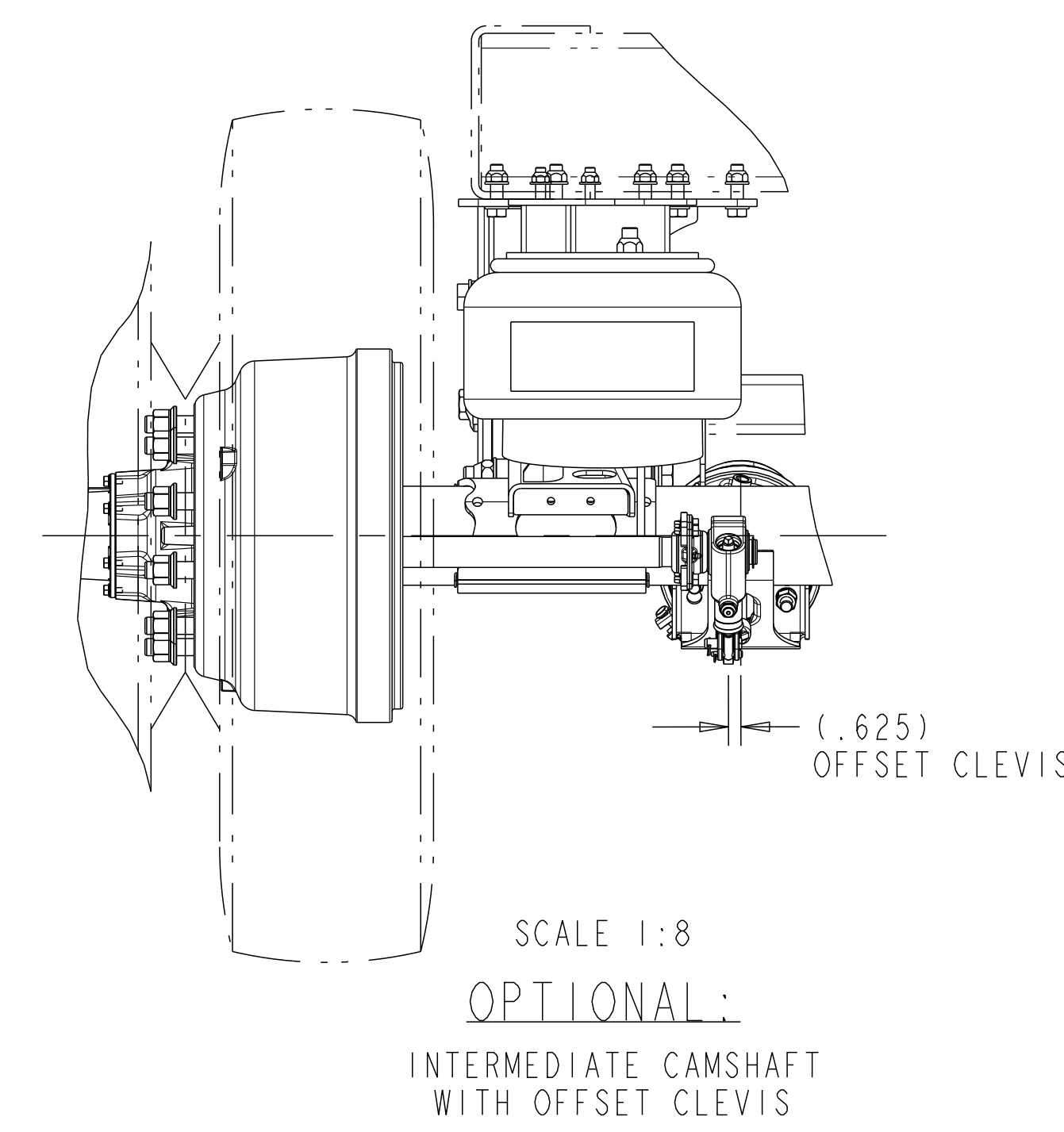


Revision: H.9  
 STATE: Engineering Released  
 EXPORT\_CONTROL: HARD\_WARE=EAR - EAR99, EXPORT\_CONTROL=EAR - EAR99



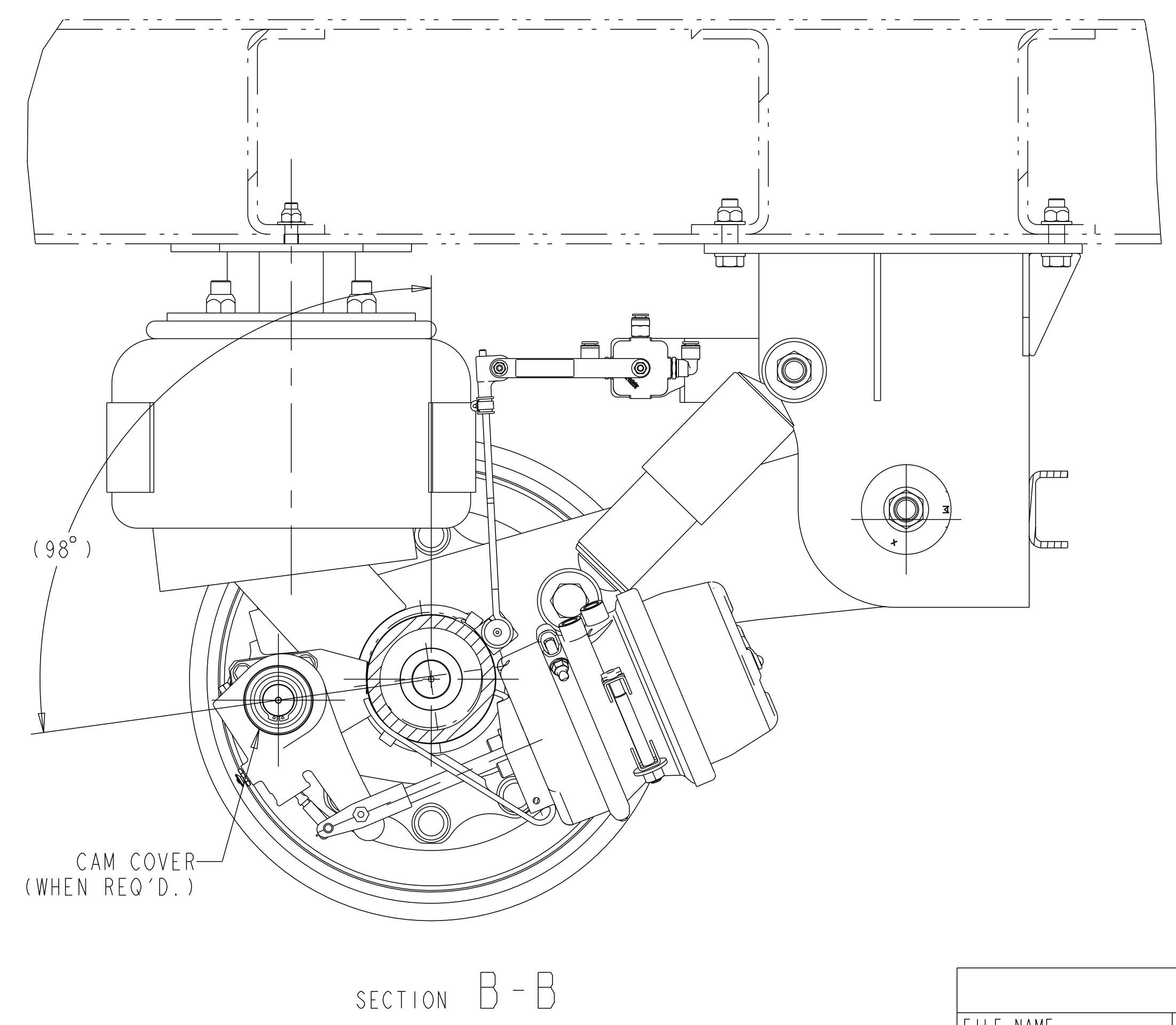
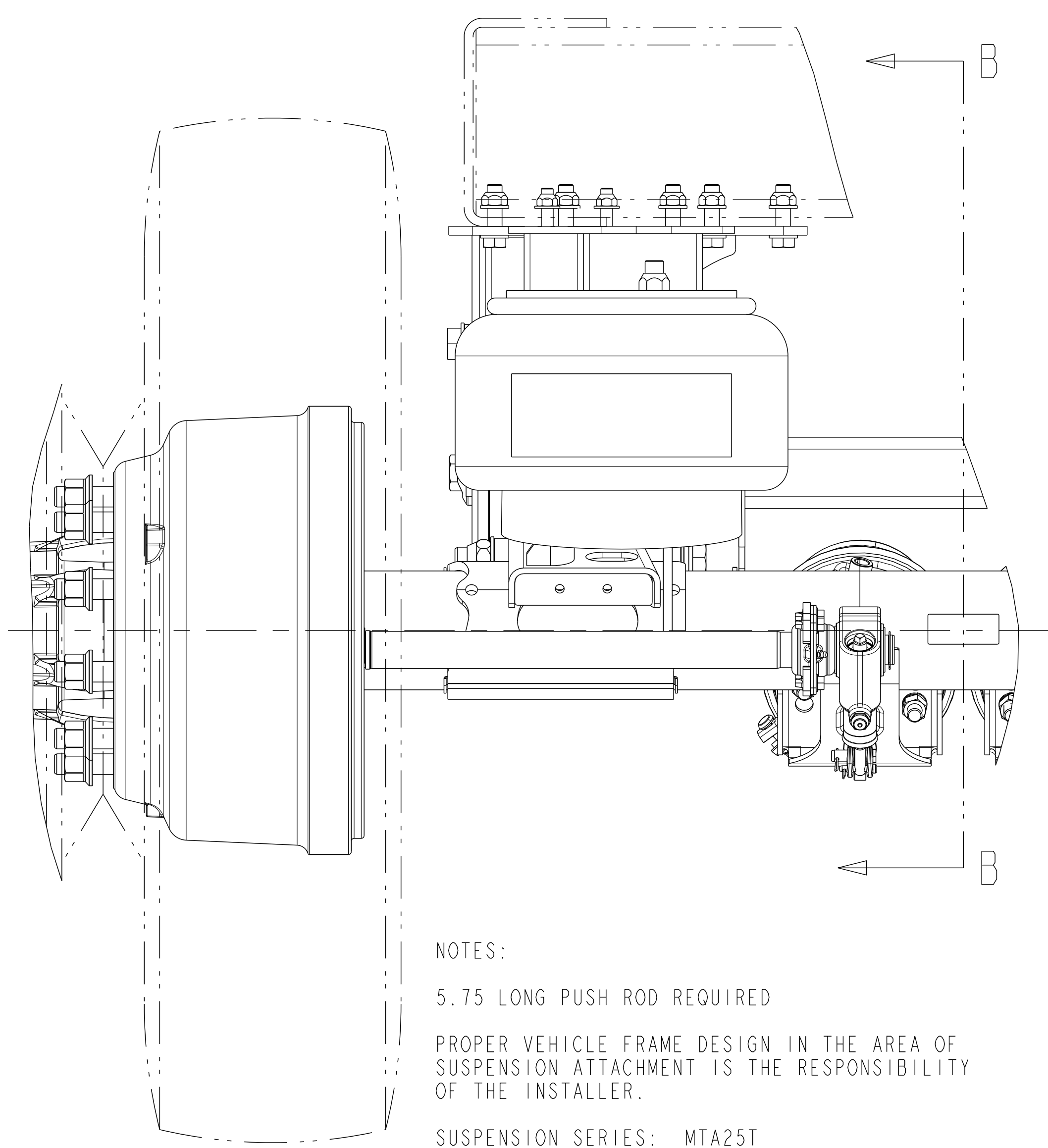
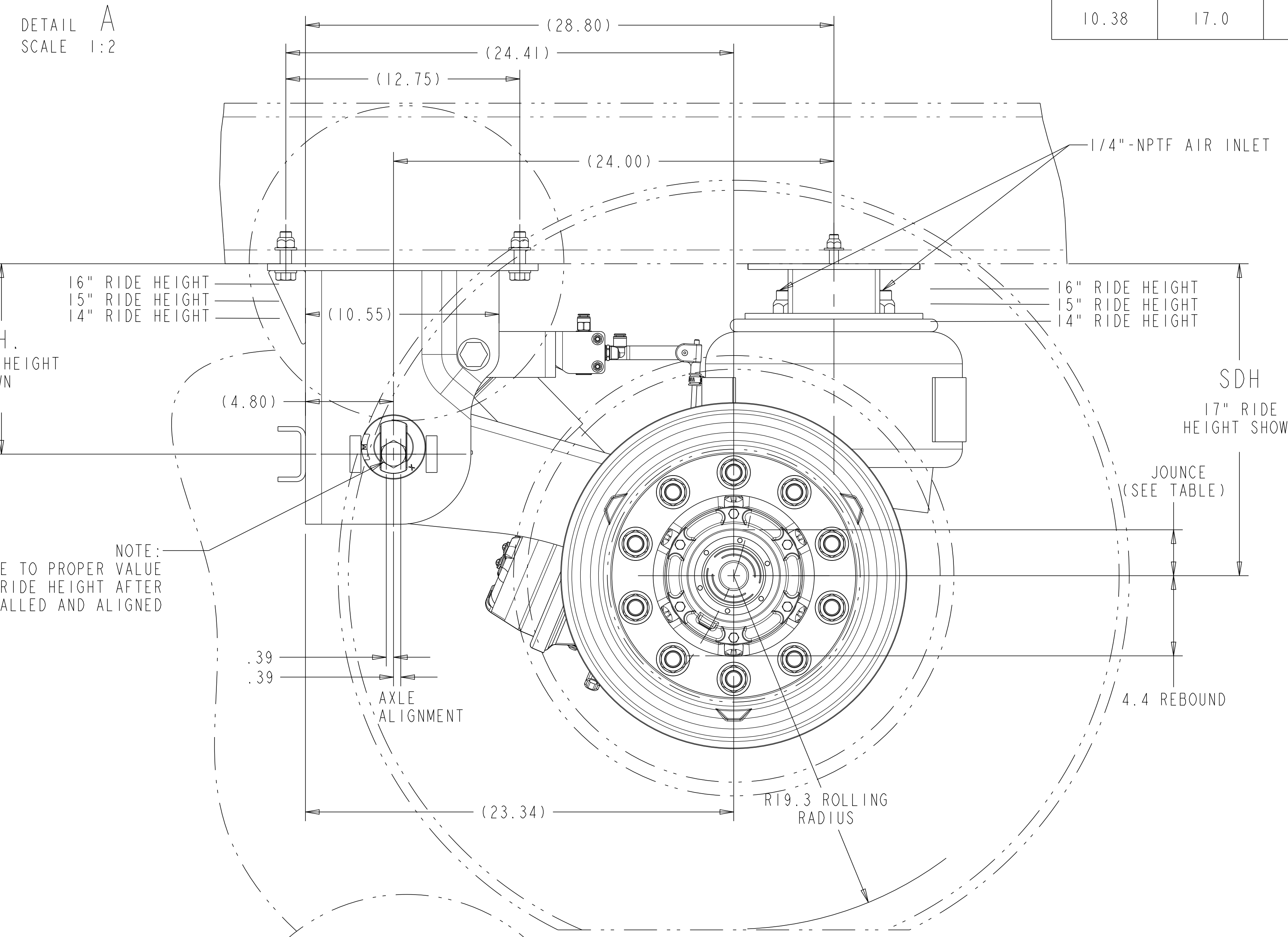
APPLICATION	STD TRACK REF	CAM CLOCKING	"X" REF	CBCB REF	SMC	TAC
DUAL WHEEL	77.5	BAR-99°	52.4	20.82	34.75	41.0
DUAL WHEEL	71.5	BAR-99°	46.4	14.82	28.75	35.0
● SUPER SINGLE	83.5	BAR-99°	66.4	20.71	40.75	47.0

SIM. PARTS		
5-66241R_01		
REVISIONS		
D	1) REMOVED REF. HOLE PATTERN, NOW SHOWN ON 5-66241AG_01. 2) WAS 1/2" FROM TOOLING HOLE	116459 10/10/11 CH SS
E	ADDED PAGE-2 WITH CAMS FRONT DETAILS.	117696 29-Mar-12 DP SVM
F	ADDED SIDE MOUNT HANGER VIEW	121032 03/11/13 CH SS
G	ADDED AIR CHAMBER PORT LOCATION NOTE.	123868 04-Apr-14 SD RS
H	UPDATED RHCV REPRESENTATION	ECN-165357 30-JUL-20 EN SD



PH	SDH	RISE HEIGHT	OUNCE
7.38	14.0	14"	2.9
8.38	15.0	15"	2.9
9.38	16.0	16"	3.1
10.38	17.0	17"	3.1

TYP. SHOCK INSTALLATION (SHOCK TO BE INSTALLED BEFORE AIR CHAMBER)



NOTES:

5.75 LONG PUSH ROD REQUIRED

PROPER VEHICLE FRAME DESIGN IN THE AREA OF SUSPENSION ATTACHMENT IS THE RESPONSIBILITY OF THE INSTALLER.

SUSPENSION SERIES: MTA25T

SUSPENSION STATIC DESIGN CAPACITY = 25,000 LBS

● RATING BASED ON APPLICATION APPROVAL

RATINGS FOR THE COMPONENTS WITHIN AN INDIVIDUAL MERITOR SUPPLIED SUSPENSION ASSEMBLY, INCLUDING BRAKES, HUBS, AND BEARINGS, MAY VARY AND MAY NOT BE EQUAL TO THE NOMINAL SUSPENSION RATING.

NO WELDING OR DRILLING ALLOWED ON TRAILING ARMS. NO WELD WITHIN .25" OF FRAME BRACKET TOOLING HOLES.

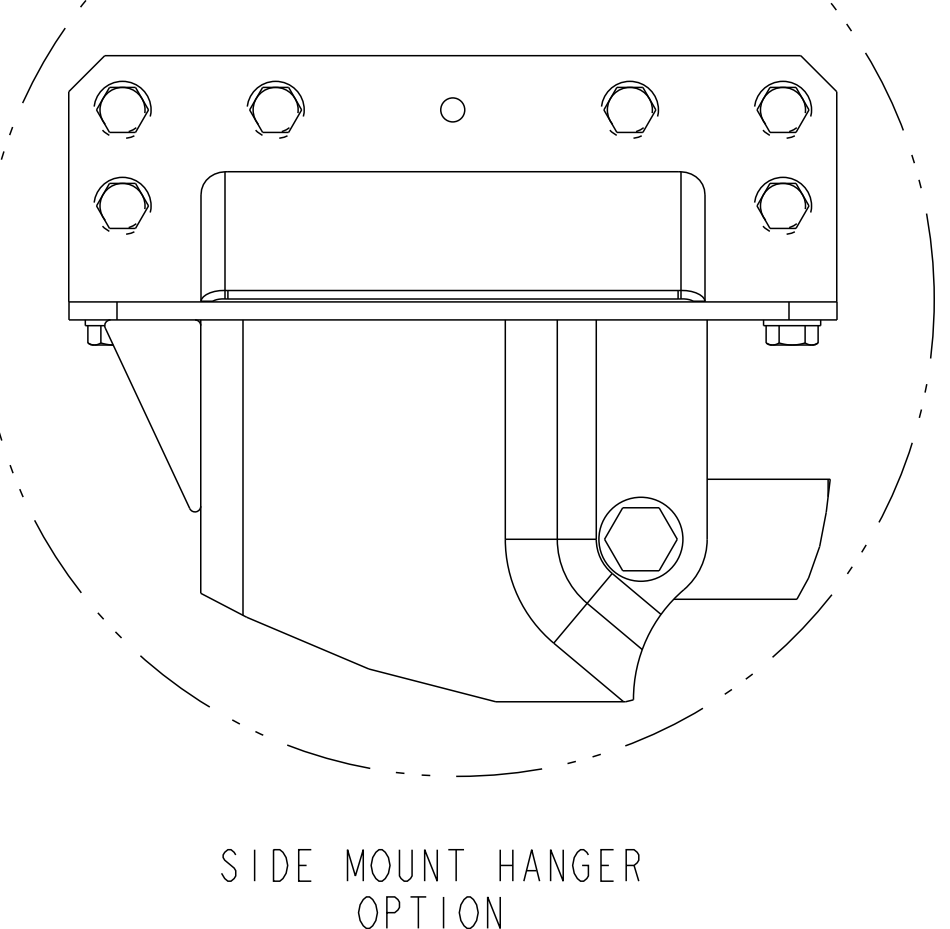
FOR FINAL INSTALLATION TO TRAILER REFER TO 5-66733F\_01 & 5-66241AG\_01

REFER TO SHOP CHART 4-60559\_37 FOR TORQUE INFORMATION

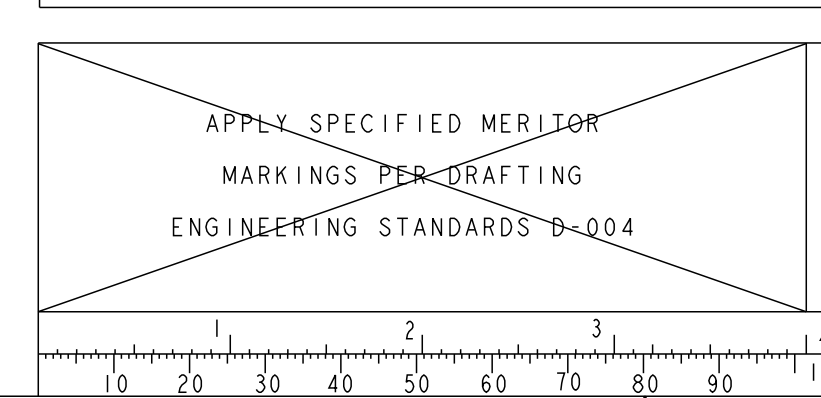
DATA BASED ON:  
 DUAL: TIRE SIZE: 11R22.5  
 WHEEL OFFSET: 6.62  
 SINGLE: TIRE SIZE: 445/50R22.5  
 WHEEL OFFSET: .56

FOR CAMS FRONT DETAILS SEE PAGE 2

DI F



① FOR AIR CHAMBER PORT LOCATION SEE LAYOUT 4-40072\_01



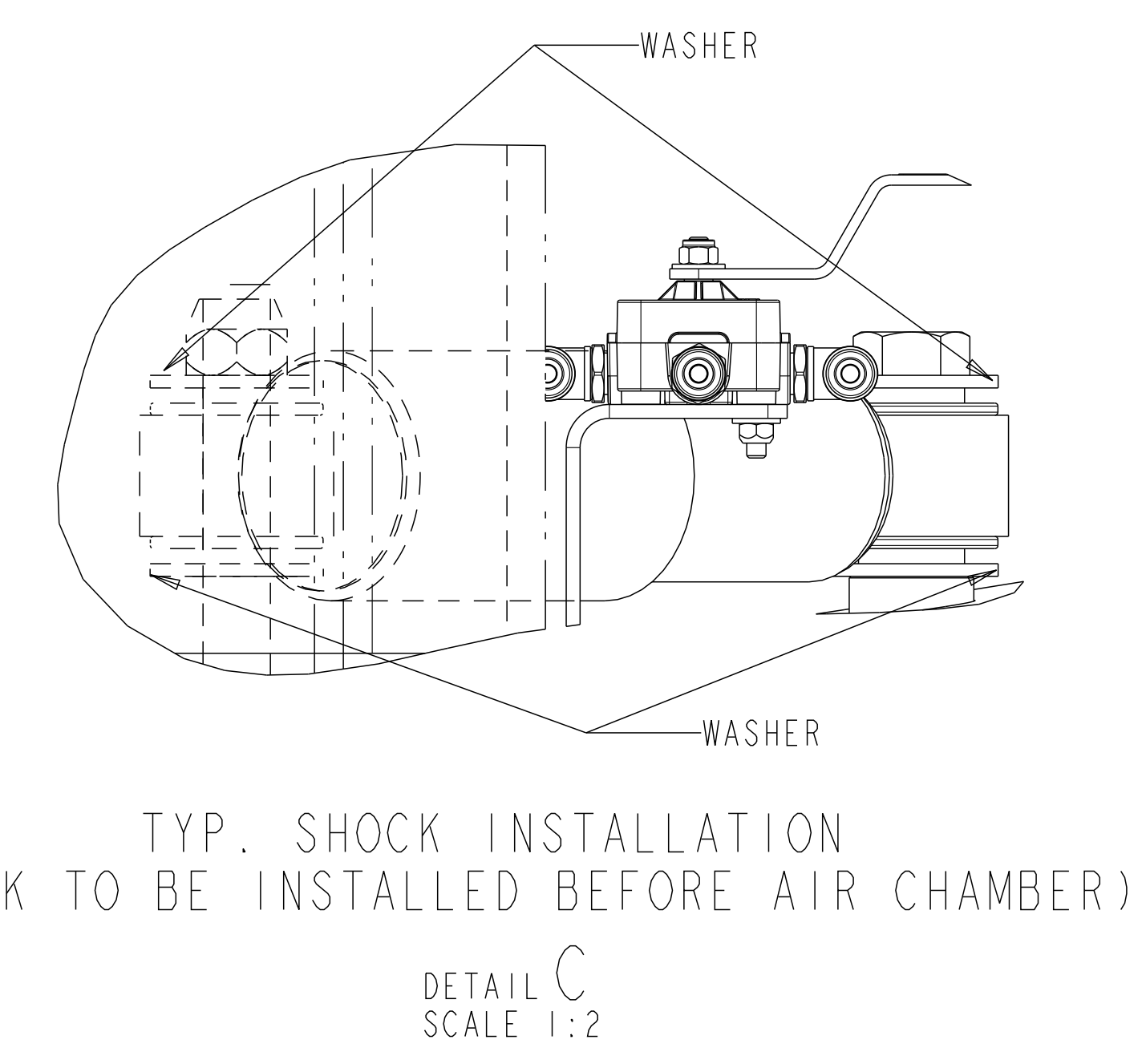
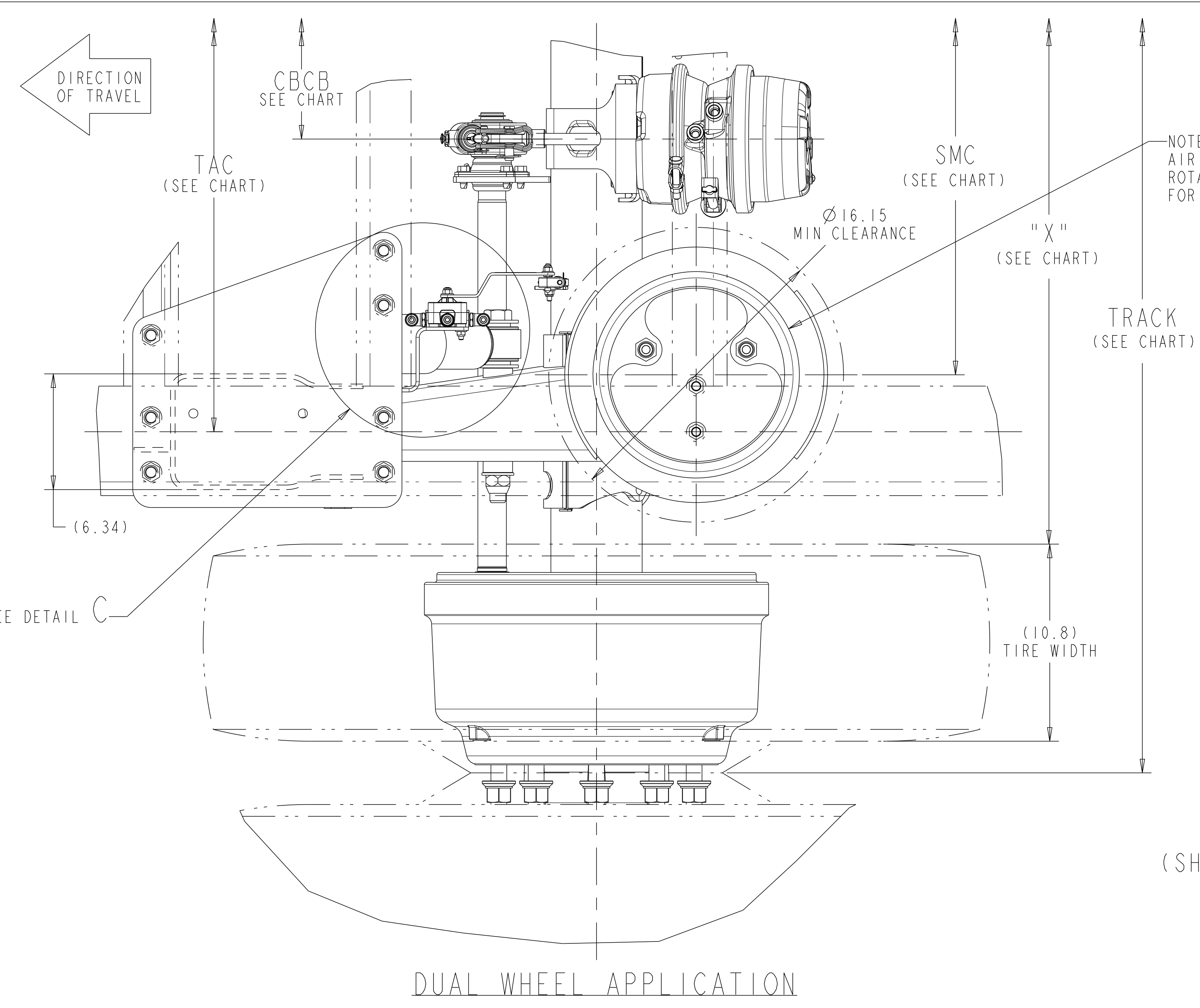
② NO WELDING OR DRILLING ALLOWED ON TRAILING ARMS. NO WELD WITHIN .25" OF FRAME BRACKET TOOLING HOLES.

FILE NAME	REV. VER
5-66734P	H.9
5-66734P	H.9

DO NOT CHANGE MANUALLY

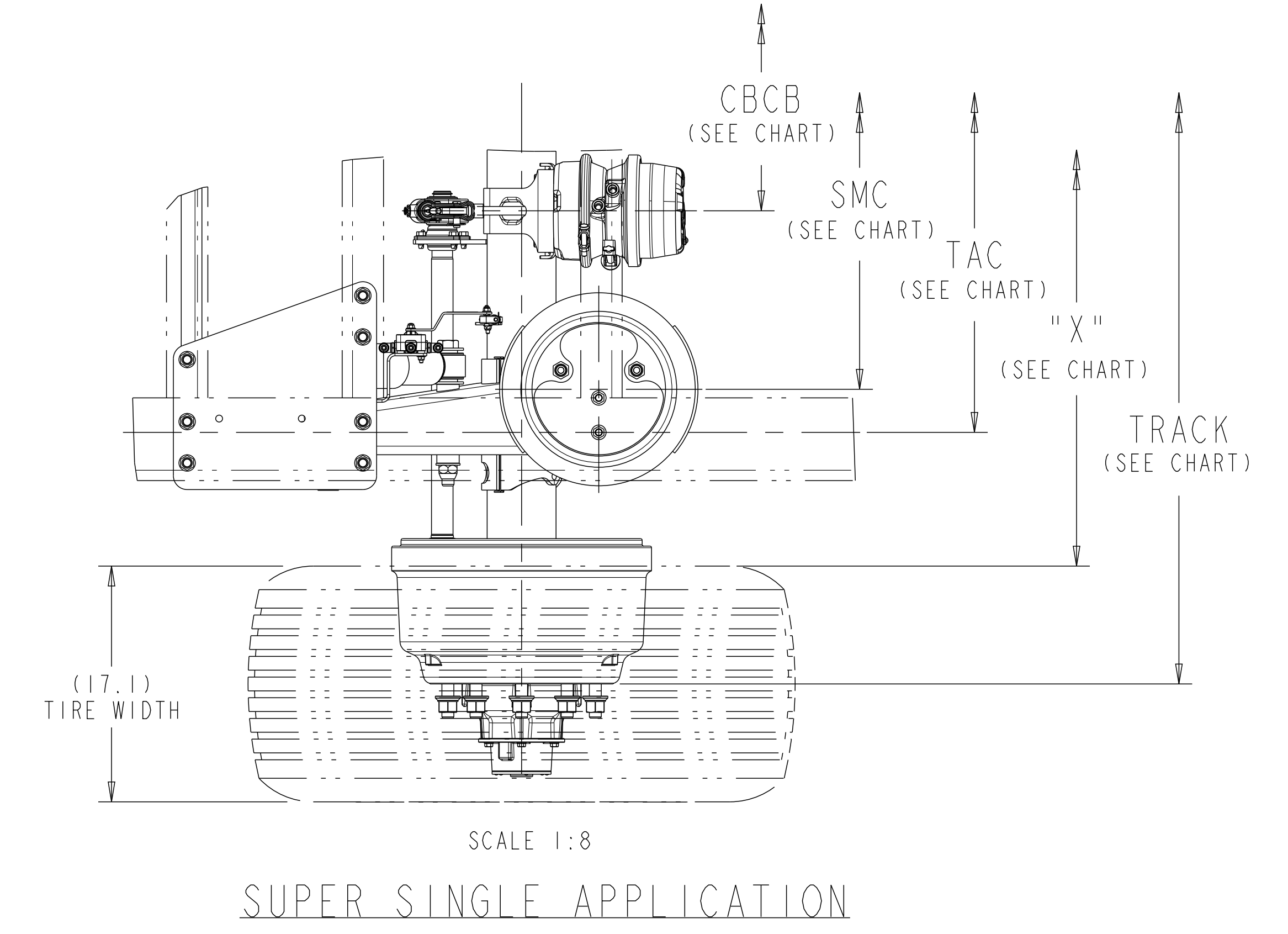
APPLY SPECIFIED MERITOR MARKINGS PER DRAFTING ENGINEERING STANDARDS D-004		THIS PRINT IS LOANED ON A CONFIDENTIAL BASIS SUBJECT TO RETURN UPON DEMAND BY MERITOR AND NOTHING HEREON MAY BE REPRODUCED, USED OR DISCLOSED IN WHOLE OR IN PART WITHOUT THE PRIOR WRITTEN PERMISSION OF MERITOR.		MATERIAL		SEE BILL OF MATERIAL FOR SPECIFIC INDIVIDUAL MODEL INFORMATION		PART/DWG NO. 5-66734P_01		EDC 00050	
PROCESS		APPROVED		DRAWN BY		CHECKED BY		3RD ANGLE PROJECTION		DRAWING SIZE	
C.H. 22-Jan-10		S.S.		H.N. 22-Jan-10		C.H. 22-Jan-10		E		E	
INQUIRY NO.		C.H. 22-Jan-10		PCCR 118544		ORIGINAL FOR		SCALE 1:4		DESIGN CONTROL GROUP	
WEIGHT RGH./FIN.		APPROVAL		PCCR 118544		MTA25T		W.W. TRAILER PRODUCTS		PART NO.	

Revision: H.9  
 STATE: Engineering Released  
 EXPORT\_CONTROL: HARD\_WARE=EAR - EAR99, EXPORT\_CONTROL=EAR - EAR99

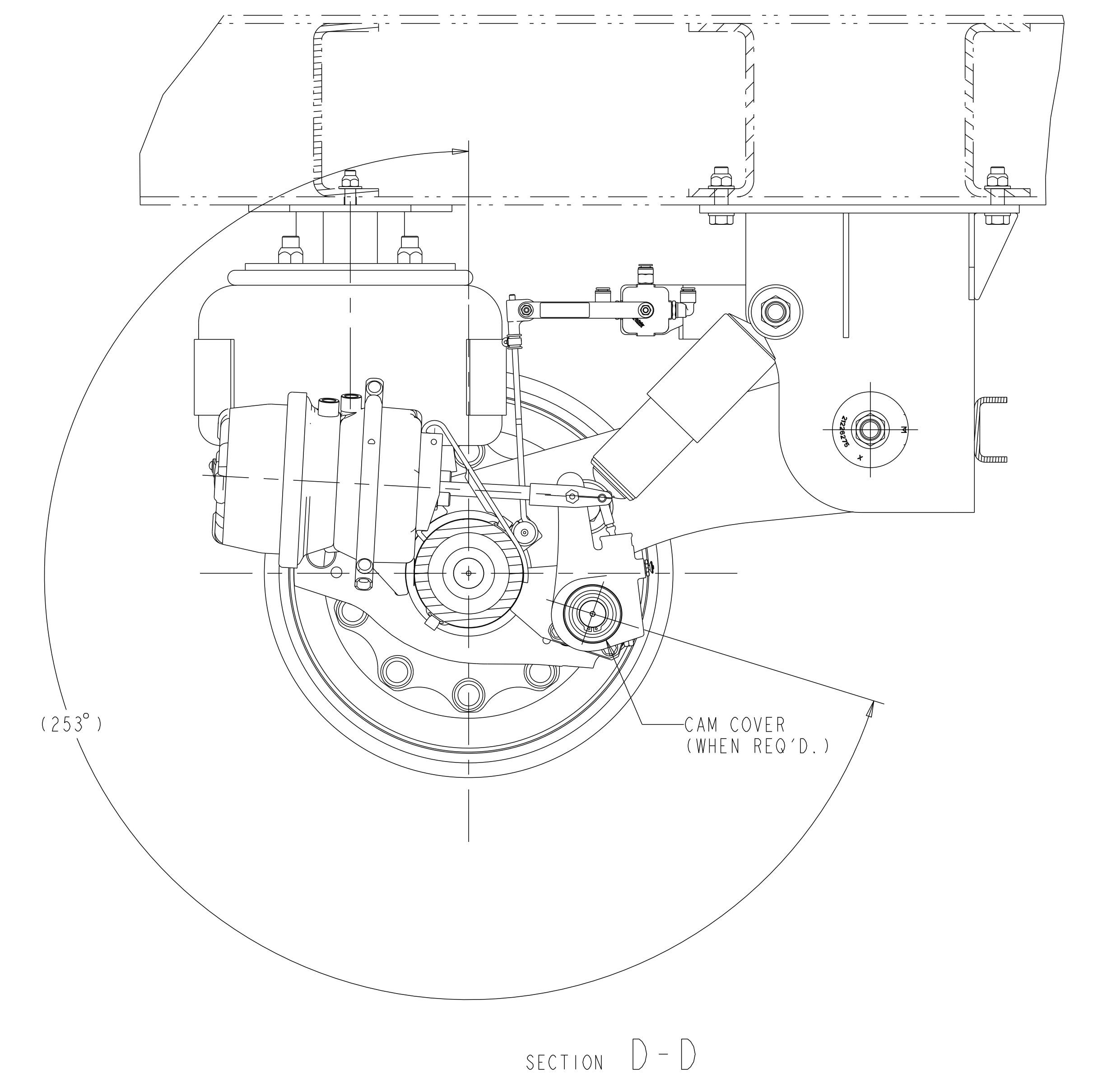
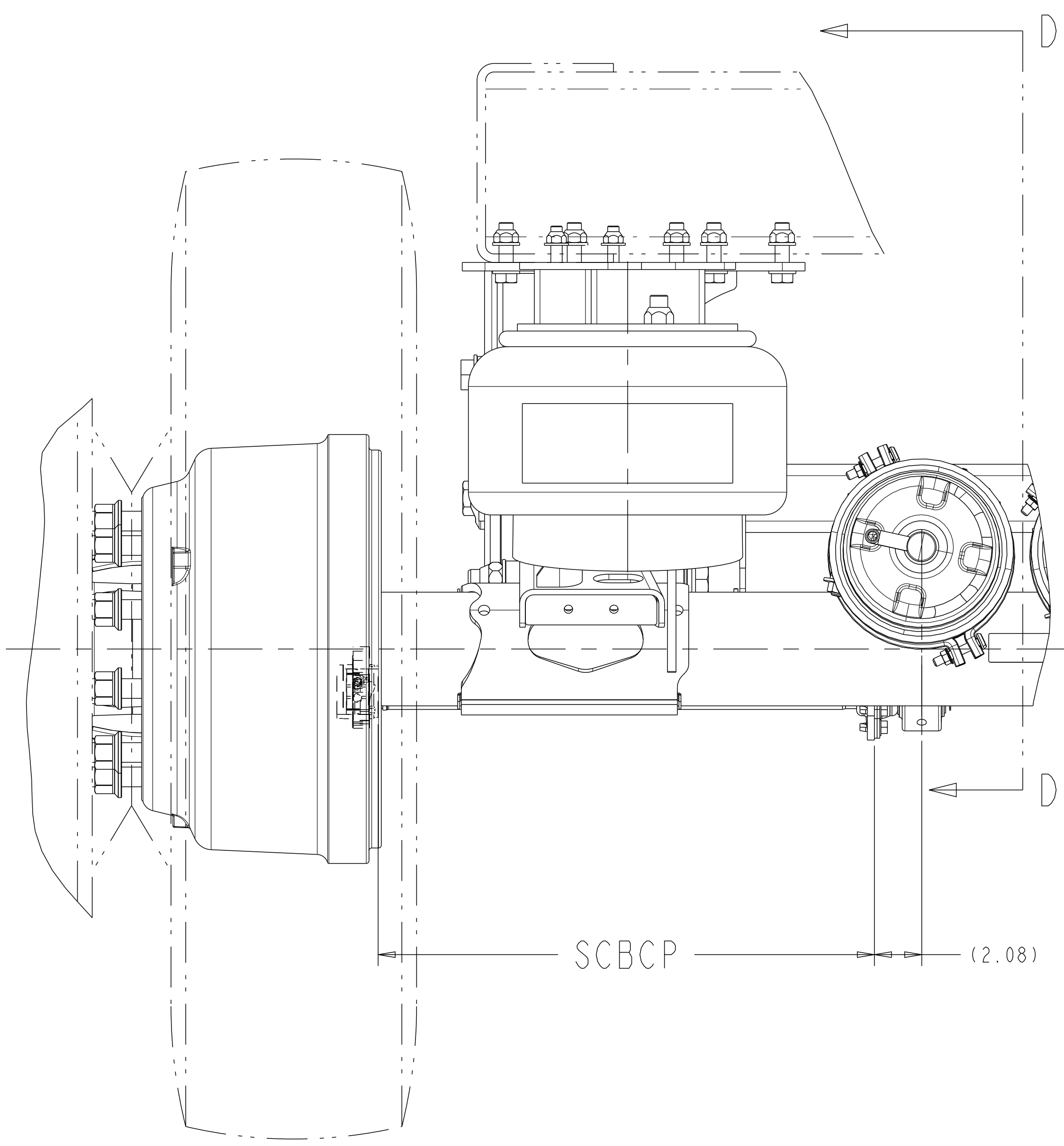
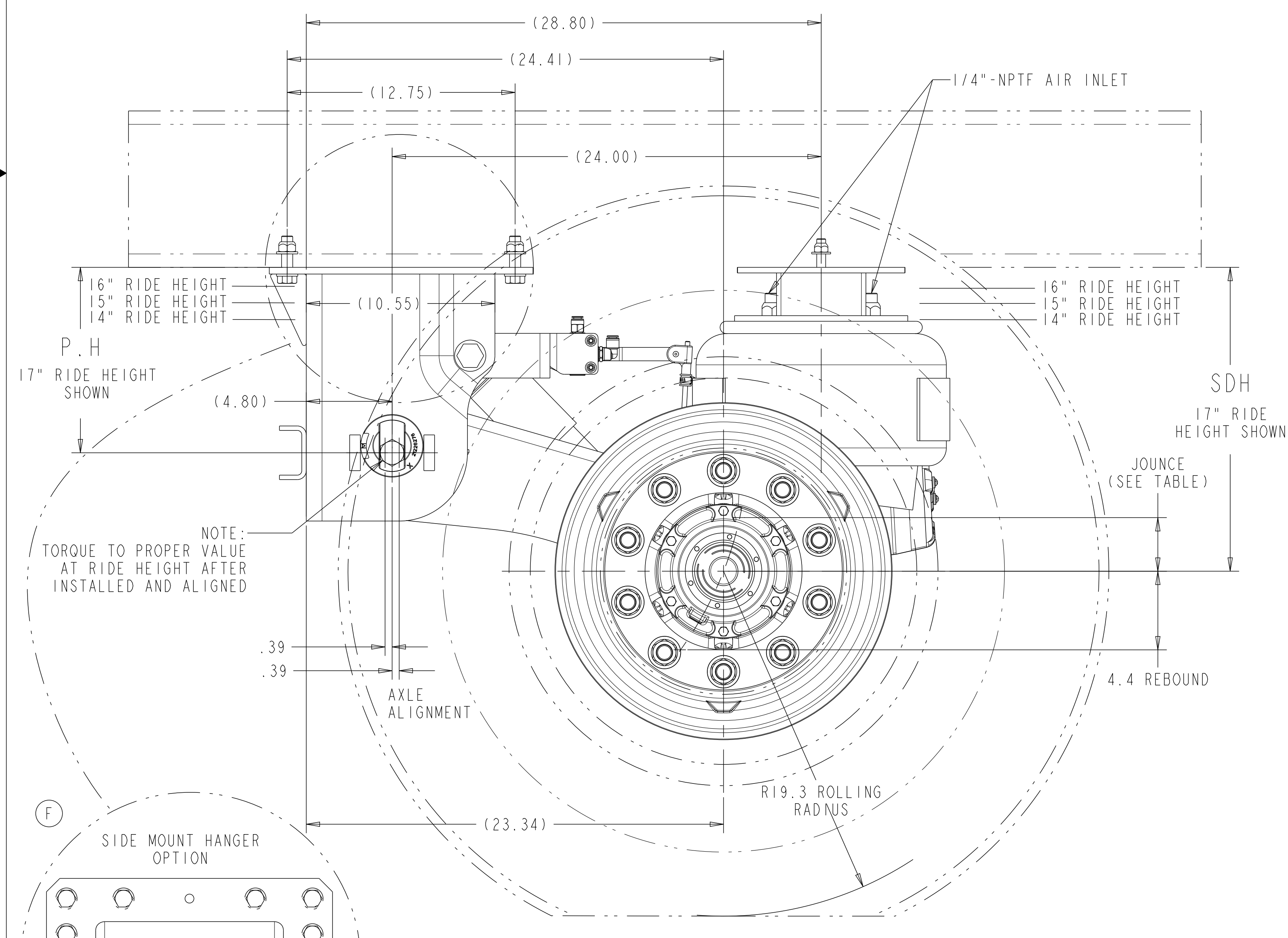


APPLICATION	STD TRACK REF	CAM CLOCKING	"X" REF	CBCB REF	SMC	TAC
DUAL WHEEL	77.5 MIN	BAF-253°	52.4	8.89	34.75	41.0
● SUPER SINGLE	83.5	BAF-253°	66.4	14.89	40.75	47.0

SIM. PARTS		
5-66240L_01		
REVISIONS		
E	ADDED PAGE-2 WITH CAMS FRONT DETAILS.	117696 29-Mar-12 DP SVM
F	ADDED SIDE MOUNT HANGER VIEW	121032 03/11/13 CH SS
G	ADDED AIR CHAMBER PORT LOCATION NOTE.	123868 04-Apr-14 SD RS
H	UPDATED RHCV REPRESENTATION	ECN-165357 30-JUL-20 EN SD



CAD FILES	
NAME	TYPE
5-66734P_H.9	DRAWING
5-66734P_H.9	MODEL



PH	SDH	RIDE HEIGHT	JOUNCE
7.38	14.0	14"	2.9
8.38	15.0	15"	2.9
9.38	16.0	16"	3.1
10.38	17.0	17"	3.1

NOTES:

5.75 LONG PUSH ROD REQUIRED

PROPER VEHICLE FRAME DESIGN IN THE AREA OF SUSPENSION ATTACHMENT IS THE RESPONSIBILITY OF THE INSTALLER.

SUSPENSION SERIES: MTA25T

SUSPENSION STATIC DESIGN CAPACITY = 25,000 LBS

● RATING BASED ON APPLICATION APPROVAL

RATINGS FOR THE COMPONENTS WITHIN AN INDIVIDUAL MERITOR SUPPLIED SUSPENSION ASSEMBLY, INCLUDING BRAKES, HUBS, AND BEARINGS, MAY VARY AND MAY NOT BE EQUAL TO THE NOMINAL SUSPENSION RATING.

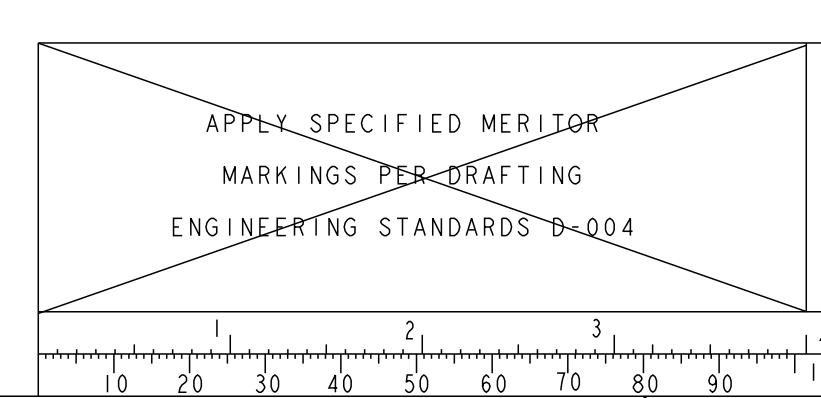
NO WELDING OR DRILLING ALLOWED ON TRAILING ARMS.  
 NO WELD WITHIN .25" OF FRAME BRACKET TOOLING HOLES.

FOR FINAL INSTALLATION TO TRAILER REFER TO 5-66733F\_01 & 5-66241AG\_01

REFER TO SHOP CHART 4-60559\_37 FOR TORQUE INFORMATION

RESTRICTIONS FOR CAMS FRONT APPLICATION:  
 1. MINIMUM TRACK VALUE SHOULD BE 77.5"  
 2. LIFT KIT CANNOT BE PACKAGED  
 3. MINIMUM SCBCP VALUE SHOULD BE 21.83"

DATA BASED ON:  
 DUAL: TIRE SIZE: 11R22.5  
 WHEEL OFFSET: .62  
 SINGLE: TIRE SIZE: 445/50R22.5  
 WHEEL OFFSET: .56



APPLY SPECIFIED MERITOR MARKINGS PER DRAFTING ENGINEERING STANDARDS D-004

THIS PRINT IS LOANED ON A CONFIDENTIAL BASIS SUBJECT TO RETURN UPON DEMAND BY MERITOR AND NOTHING HEREON MAY BE REPRODUCED, USED OR DISCLOSED IN WHOLE OR IN PART WITHOUT THE PRIOR WRITTEN PERMISSION OF MERITOR.

MATERIAL

PROCESS

INQUIRY NO.

C.F./T.E. NO.

APP. NO.

SEE BILL OF MATERIAL FOR SPECIFIC INDIVIDUAL MODEL INFORMATION

APPROVED

PROJ. ENG.

MATERIAL

SPECIAL

DRAWN BY

S. V. M

12-Mar-12

CHECKED BY

D. P

12-Mar-12

3RD ANGLE PROJECTION

SCALE

1:4

DESIGN CONTROL GROUP

W. W. TRAILER PRODUCTS

PART NO.

117696

PART/DWG NO.

5-66734P\_01

EDC

00050

RELEASE

NAME

MTA25T SERIES SUSP. GROUP

PAGE

2 OF 2

**MERITOR**

INCH

PCCR 123834

MTA25T

DO NOT CHANGE MANUALLY