

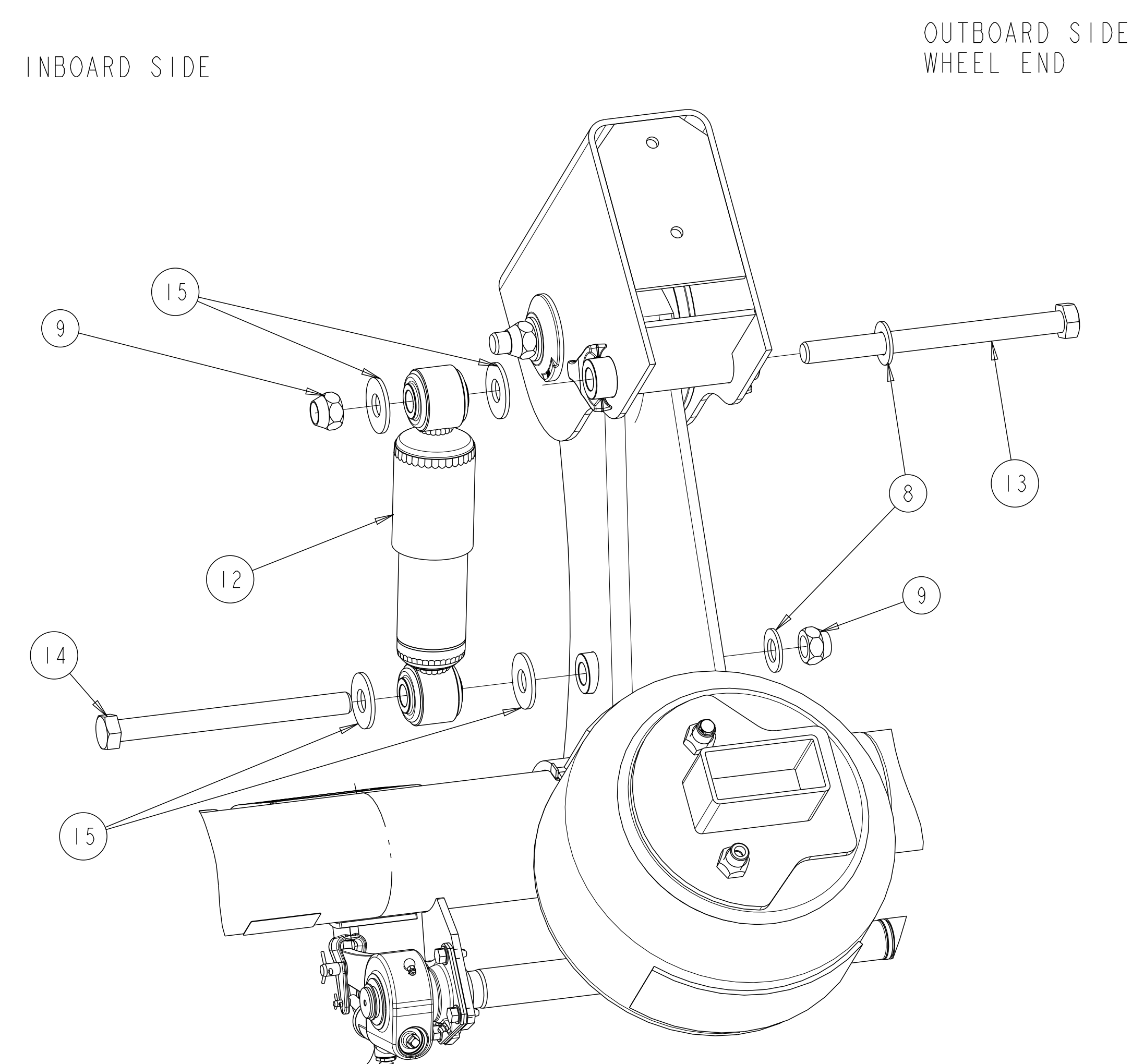
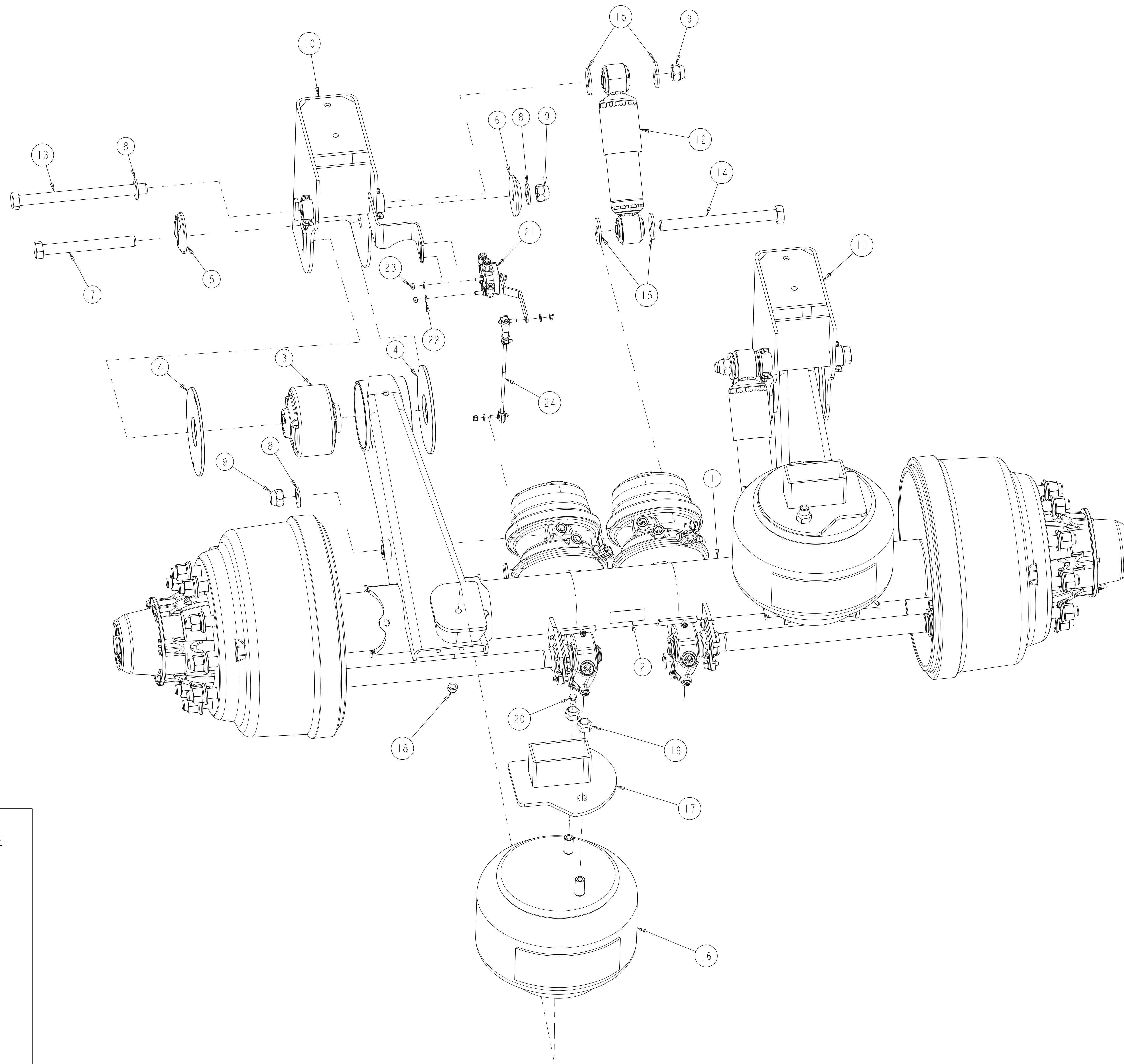
Revision: H.7

STATE: Engineering Released

EXPORT\_CONTROL: HARD\_WARE=EAR - EAR99,EXPORT\_CONTROL=EAR - EAR99

ITEM #	PART NAME	PART NUMBER	QTY
-	LAYOUT-MTA23T EXPLODE	5-67937G-01	1
1	AXLE ASSY-TRAILER	SEE BILL OF MATERIAL	1
2	NAME PLATE	2297T8652	1
3	PIVOT BUSH MOULDING	A-1225N1522	2
4	WASHER-THRUST	21226663	4
5	WASHER ECCENTRIC	21226276	2
6	WASHER-SPECIAL	21226275	2
7	BOLT/CAPSCREW	S-21464M-2	2
8	WASHER-HARDENED	122905295	6
9	NUT-LOCK, FIN	1227X1766	6
10	FRAME BRKT-LH	SEE BILL OF MATERIAL	1
11	FRAME BRKT-RH	SEE BILL OF MATERIAL	1
12	ABSORBER-SHOCK	A-7805F1020	2
13	BOLT-HEXAGON	S-21488M-2	2
14	BOLT-HEXAGON	S-21480M-2	2
15	WASHER-FLAT	1229R5296	8
16	SPRING-AIR	A-2258H1568	2
17	AIR SPRING PEDESTAL	SEE BILL OF MATERIAL	2
18	NUT-LOCK, FIN	1227B1614	2
19	NUT-LOCK, FIN	1227M1573	4
20	PLUG	1250H1308	2
21	VALVE-HEIGHT CONTROL	SEE BILL OF MATERIAL	1
22	WASHER-FLAT	WA-34	2
23	NUT-LOCK, FIN	NL-24-1	2
24	LINK ASSY	A-1245X1220	1

G1  
G2  
F  
E D  
B G3  
H1  
C  
H2



SHOCK INSTALLATION

SIM. PARTS			
REVISIONS			
A	RELEASED 5-67937G-01 FOR PRODUCTION	109615 11/13/09	CH HN
B	BOLT CALLED OUT WAS S-21448M-2	111204 12/17/09	CH HN
C	NUT WAS NL-24-M-1	116764 09/07/11	CH SS
D	WAS A-7805E1019	117850 02/02/12	CH SS
E	UPDATED PART NUMBER LIST WITH SHOCK ABSORBER PART NUMBER	121454 08-May-13	CH SKS
F	CORRECTED EXPLODED VIEW AND TABLE TO REMOVE ITEM#12 (BRKT,FIN), SINCE HCV BRACKET IS WELDED TO ITEM #10 (FRAME BRKT-LH)	122507 21-Nov-13	KHK SKS
G	G1- 122905295 WAS 200259-6 G2- 1227X1766 WAS 1227R1604 G3- 1229R5296 WAS 1229M4979	ECN-137447 02-08-17	JMK VL
H	1- ITEM #21 UPDATED RHCV REPRESENTATION 2- ITEM #24 PN WAS 203159-5	ECN-167907 15-JUN-20	VMJ SD

CAD FILES		
FILE NAME	REV.	VER
DRAWING 5-67937G	H.7	
ASSEM 5-67937G	H.7	

DO NOT CHANGE MANUALLY

APPLY SPECIFIED MERITOR MARKINGS PER DRAFTING ENGINEERING STANDARDS D-004		THIS PRINT IS LOANED ON A CONFIDENTIAL BASIS SUBJECT TO RETURN UPON DEMAND BY MERITOR AND NOTHING HEREON MAY BE REPRODUCED, USED OR DISCLOSED IN WHOLE OR IN PART WITHOUT THE PRIOR WRITTEN PERMISSION OF MERITOR.		MATERIAL		PROCESS		APPROVED		DRAWN BY		CHECKED BY		3RD ANGLE PROJECTION		DRAWING SIZE		PART NO.	
								S.S.		H.N.		C.H.		E		E		109615	
								S.S.		10-Jun-09		10-Jun-09		E		E		5-67937G-01	
								S.S.		10-Jun-09		10-Jun-09		E		E		LAYOUT-MTA23T EXPLODE	
								S.S.		10-Jun-09		10-Jun-09		E		E		PAGE 1 OF 1	
								S.S.		10-Jun-09		10-Jun-09		E		E		MERITOR INCH	
								S.S.		10-Jun-09		10-Jun-09		E		E		DCR 116105-008	
								S.S.		10-Jun-09		10-Jun-09		E		E		MTA23T	
								S.S.		10-Jun-09		10-Jun-09		E		E		SCALE 1:4	
								S.S.		10-Jun-09		10-Jun-09		E		E		DESIGN CONTROL GROUP	
								S.S.		10-Jun-09		10-Jun-09		E		E		W W TRAILER PRODUCTS	