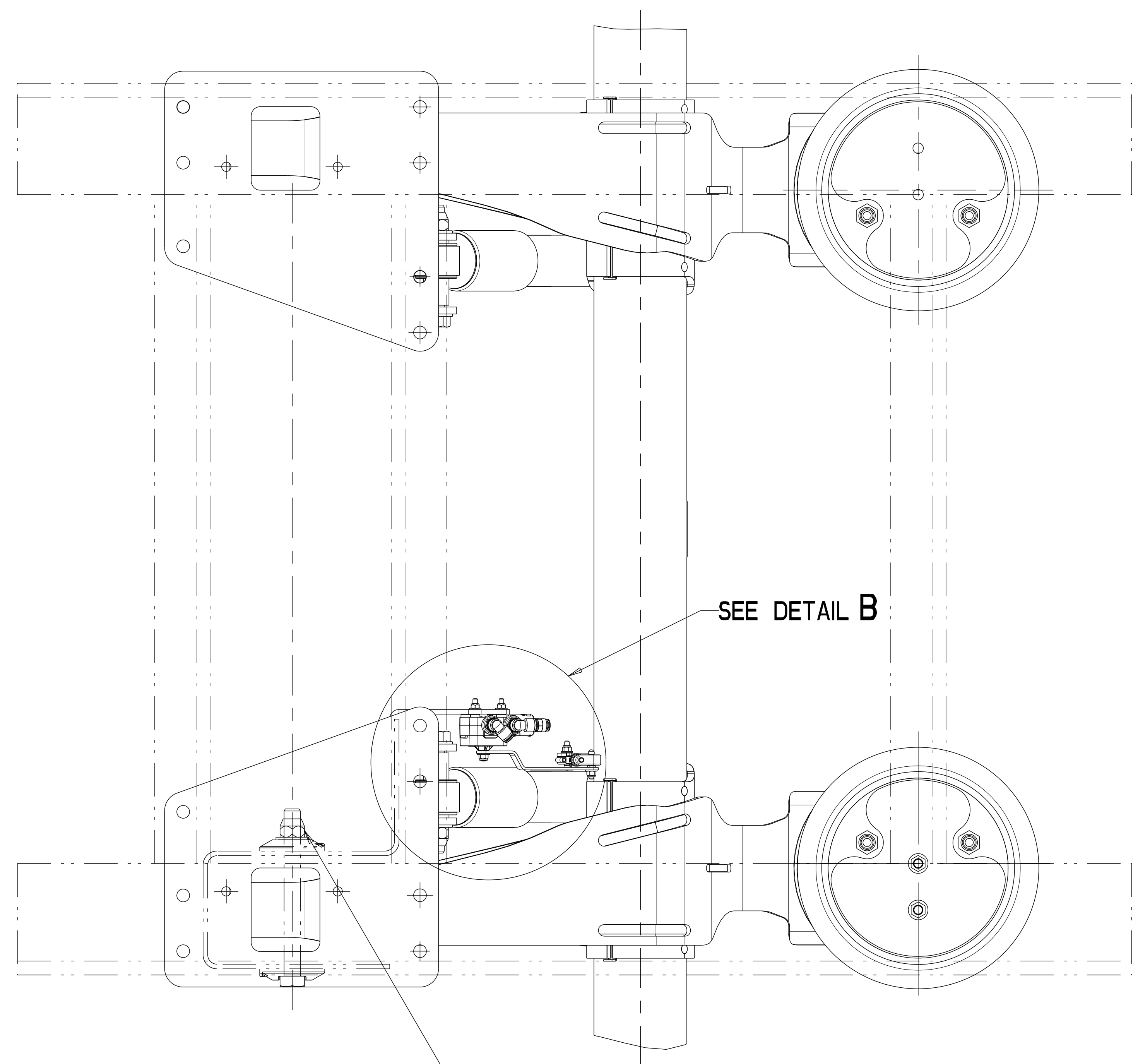


Revision: E.4  
 STATE: Engineering Released  
 EXPORT\_CONTROL: HARD\_WARE=EAR - EAR99, EXPORT\_CONTROL=EAR - EAR99



RISE HEIGHT	(A) (DAMPER LENGTH)	(B) (LINK LENGTH)
6.5	15.1	4.5
7.5	15.1	5.3
8.0	15.1	5.7
9.0	15.5	5.7
12.0	15.5	6.0
14.0	15.8	7.7
15.0	15.8	8.5
16.0	15.7	6.9
17.0	15.8	7.7
19.0	15.8	9.4

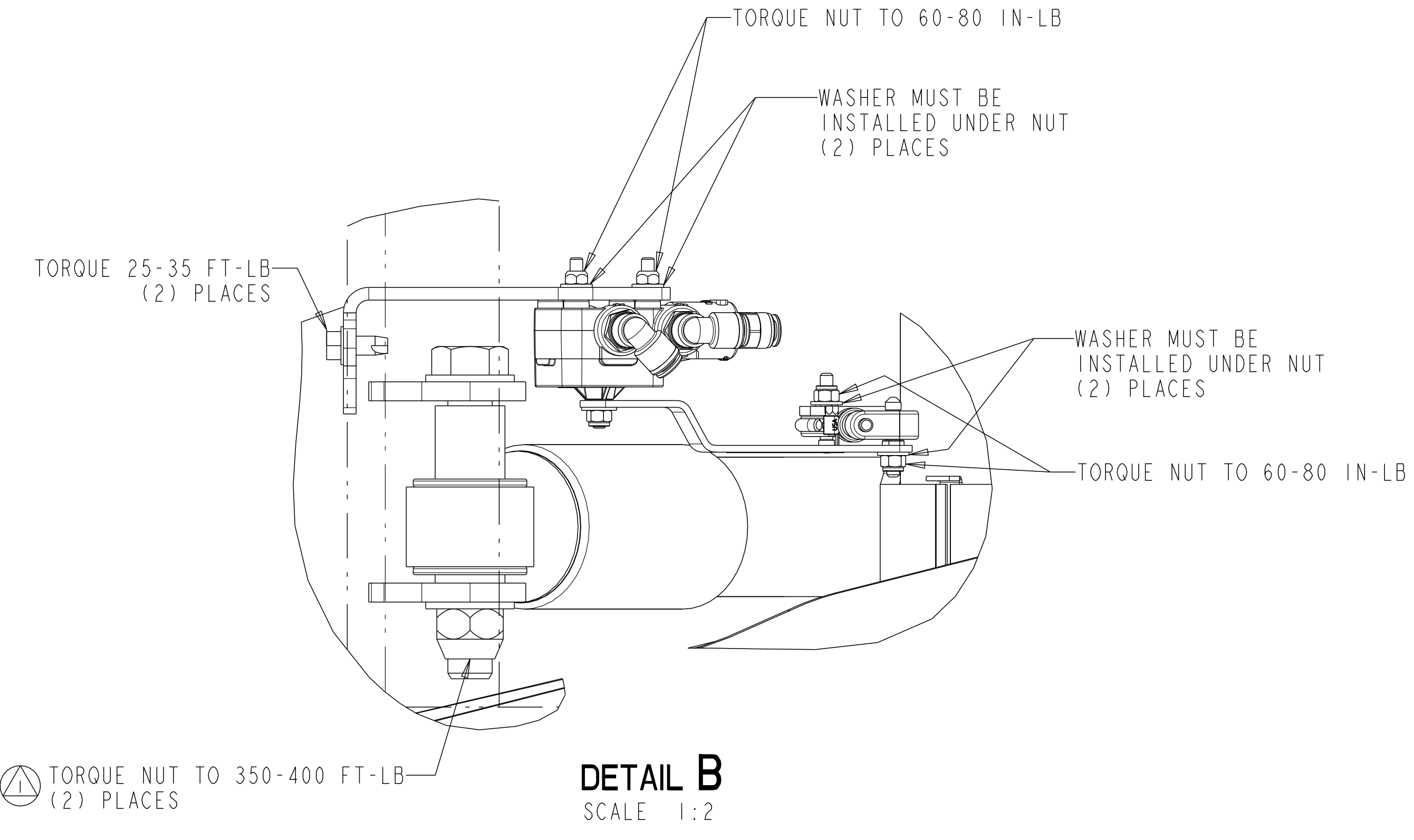
QUALITY CONTROL CHARACTERISTICS

- ⊕ DENOTES MAJOR CHARACTERISTICS
- ⊕ SHOCK NUT TORQUE
- ⊕ (B2) ⊕ PIVOT NUT TORQUE PLUS ANGLE

- NOTE:
1. REFER TO APPROPRIATE 4-60559 LAYOUTS TO OBTAIN AXLE COMPONENT TORQUE VALUES
  2. FOR MTA23L, 25L & 30L BOLT-ON ASSEMBLIES SEE 5-66733H FOR FRAME WELDMENT INFORMATION
  3. TORQUE ALL FASTENERS WITH SUSPENSION AT RIDE HEIGHT

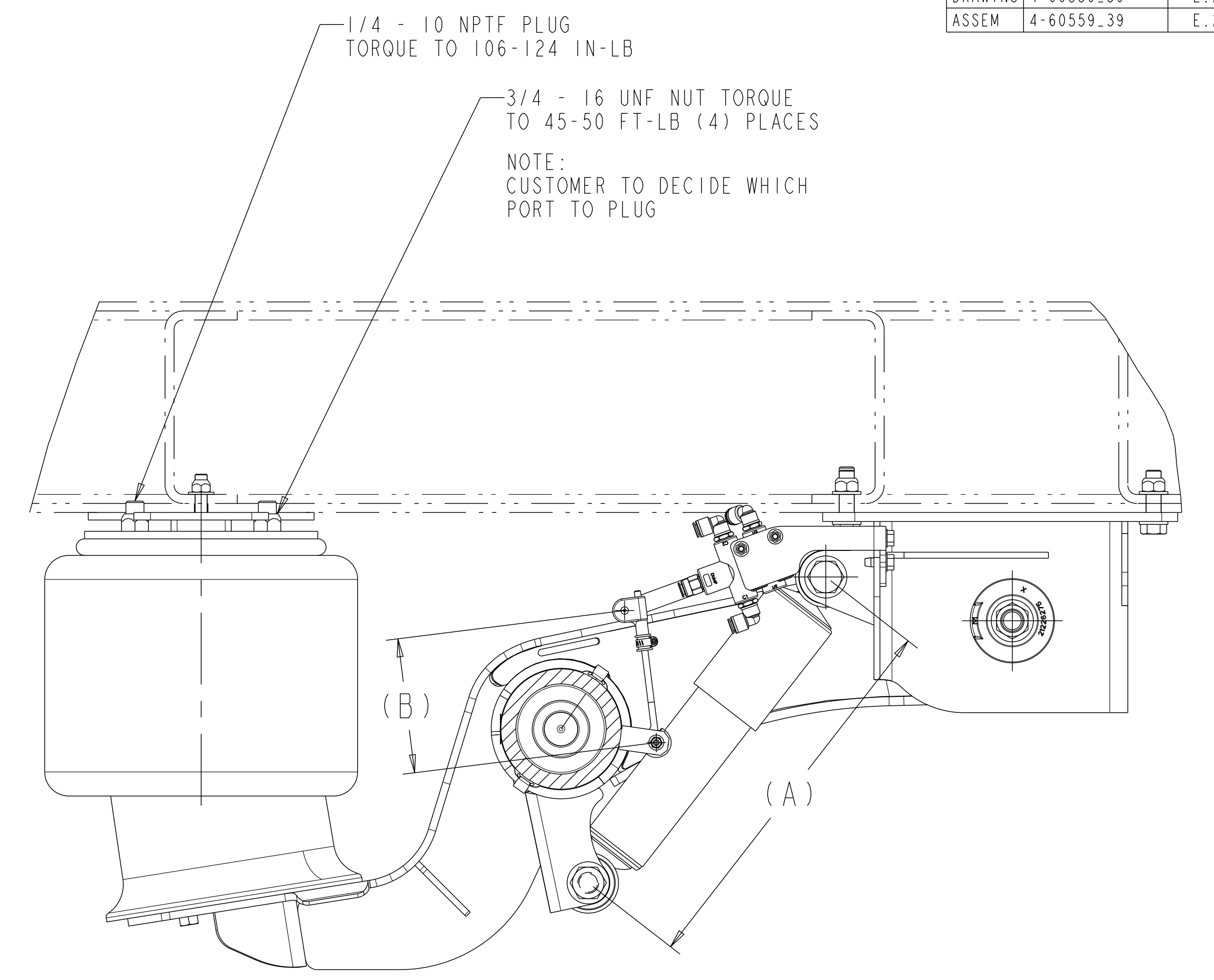
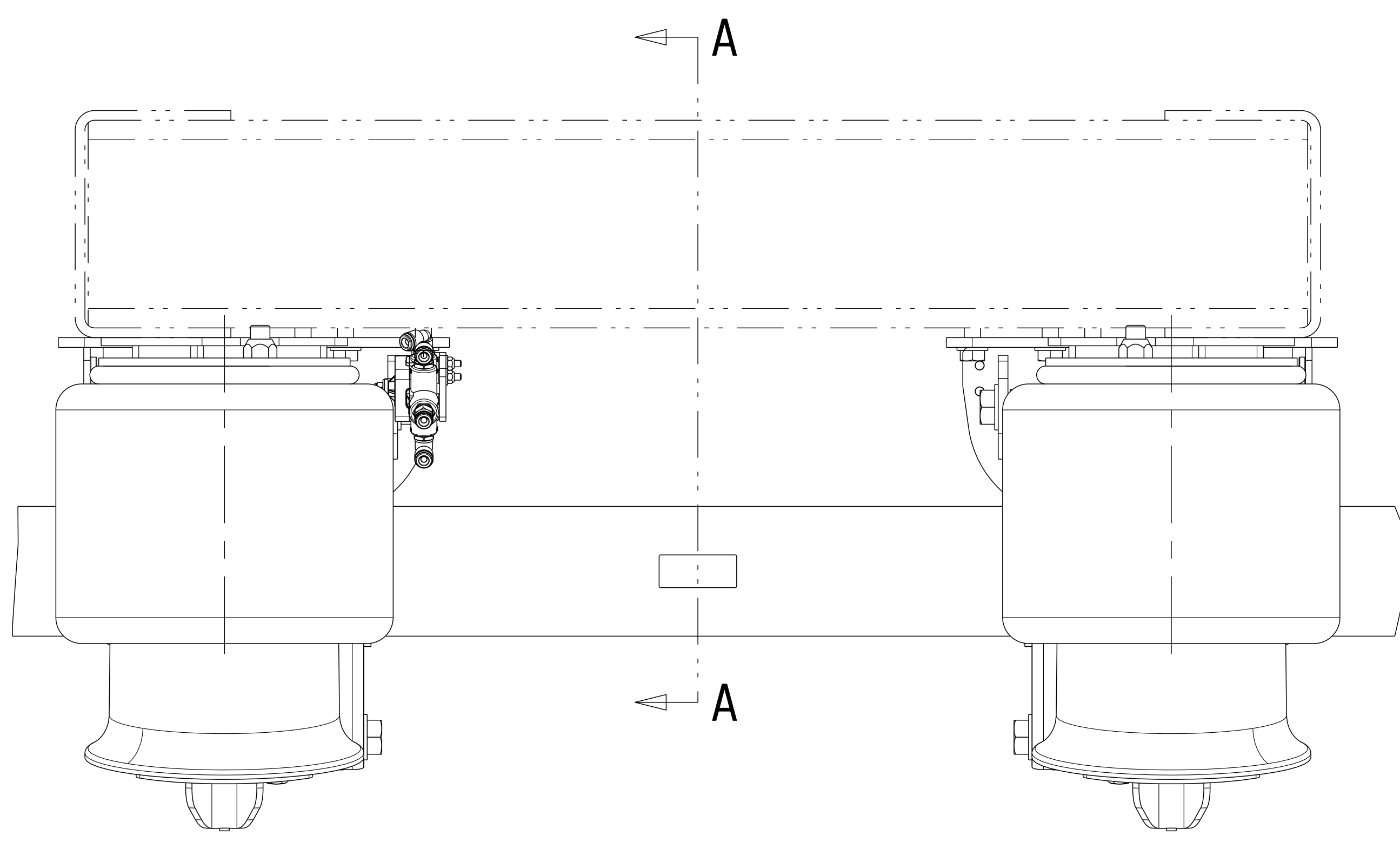
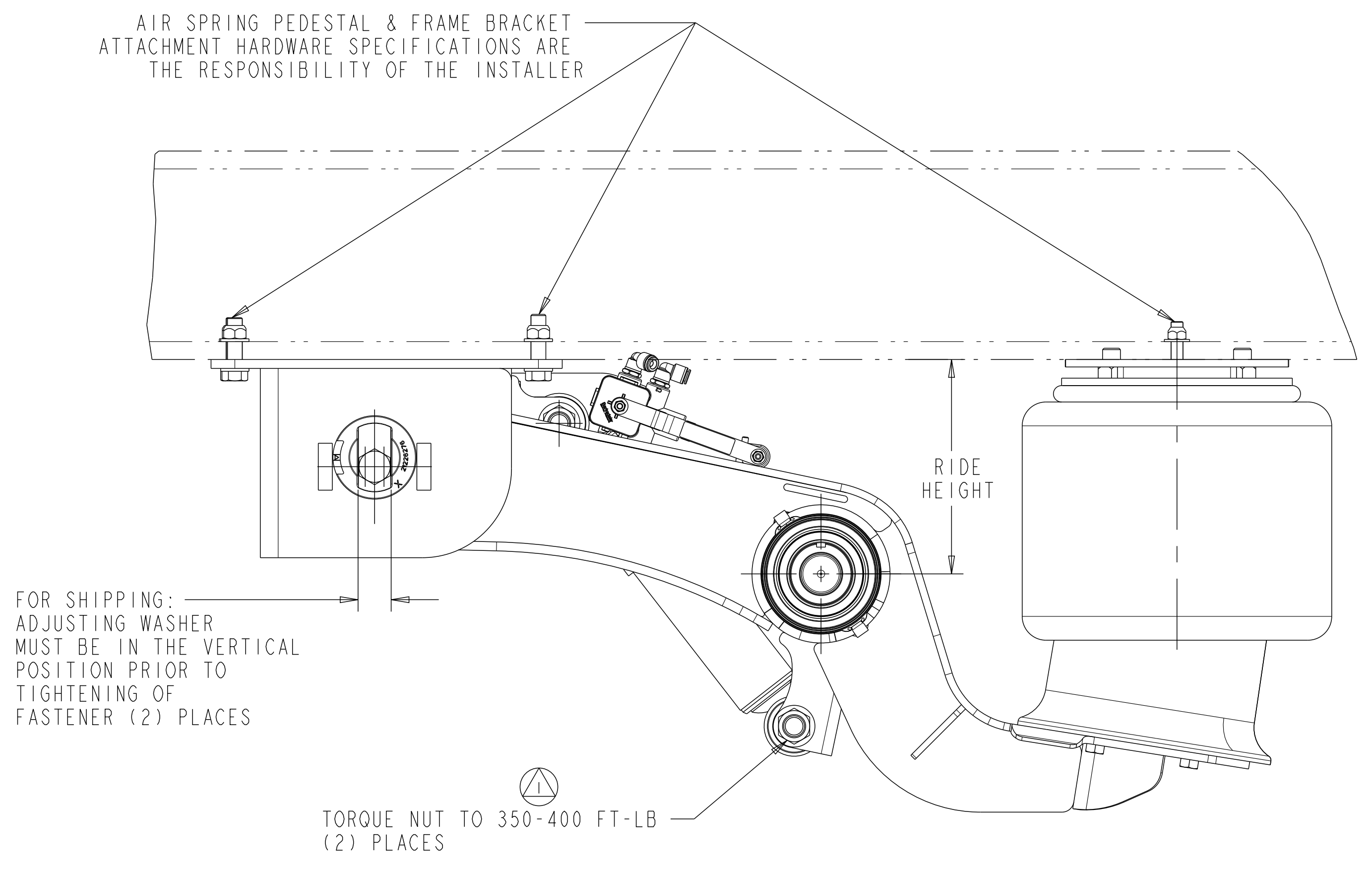
SIM. PARTS			4-60559_38		
REVISIONS					
A	RELEASED 4-60559_39 FOR PRODUCTION	124403	07-Jul-14	LGS	ARS
B	B1- REVISED NOTE FOR PIVOT NUT TORQUE B2- ADDED PLUS ANGLE TO MAJOR CHARACTERISTIC	ECN-137447	02-13-17	JMK	VL
C	ADDED MTA23L INFO.	ECN-144130	02-Nov-17	LGS	SKS
D	UPDATED RHCV REPRESENTATION	ECN-167907	15-JUN-20	VMJ	SD
E	REMOVED OPTIONAL TORQUE DETAILS AND UPDATED TORQUE INFORMATION TO TORQUE PLUS ANGLE ONLY	ECN-187308	16-MAR-22	EN	MKV

SEE DETAIL B

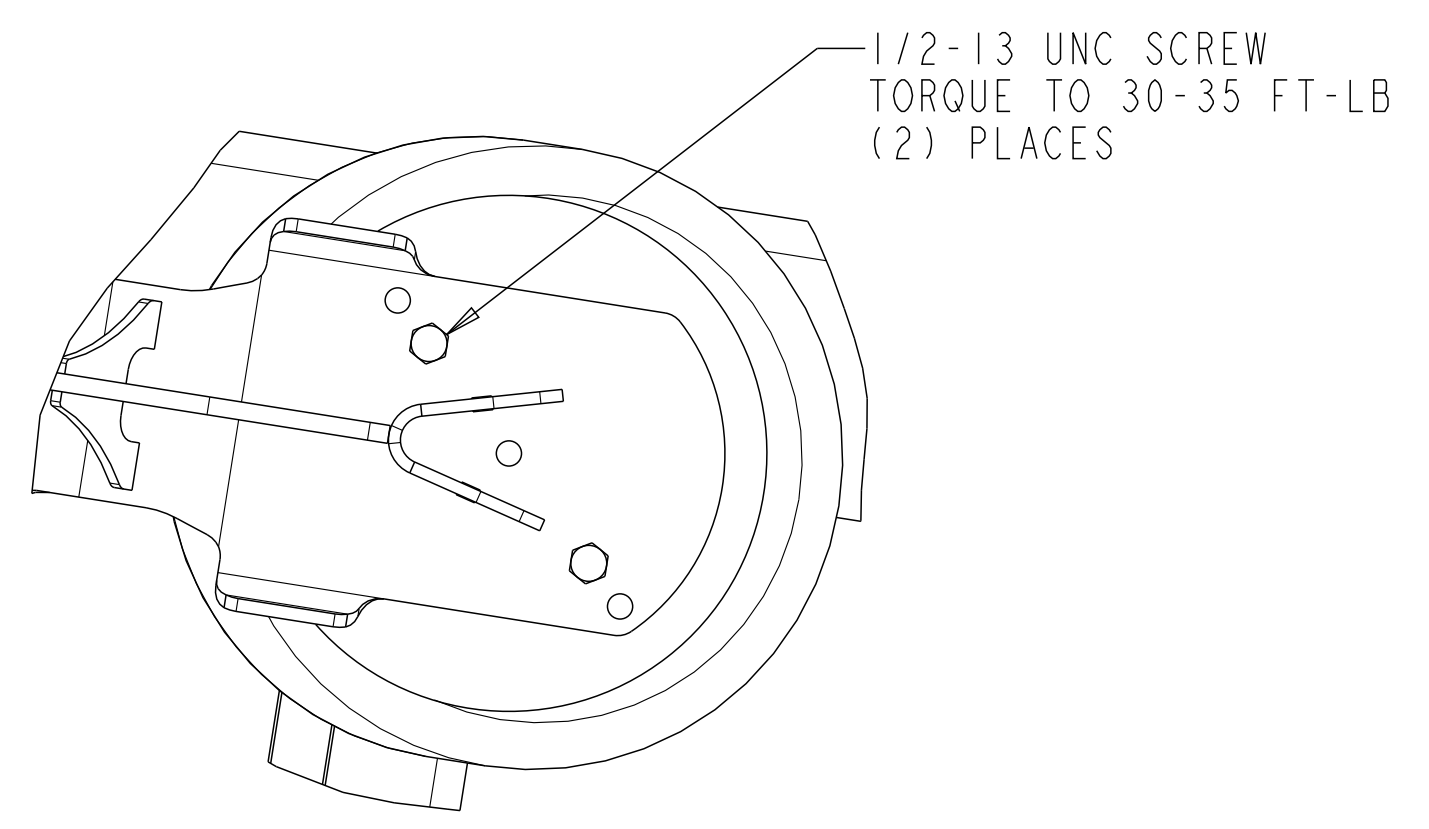


- FOR SHIPPING: WITH WASHER IN VERTICAL POSITION TORQUE NUT TO 40-60 FT-LB (2) PLACES
- ⊕ FINAL INSTALLATION: AFTER PROPER INSTALLATION AND ALIGNMENT OF THE AXLES AT RIDE HEIGHT, PROCEED WITH TORQUEING THE PIVOT JOINT. TORQUE + ANGLE PROCEDURE: APPLY 180 FT-LB OF TORQUE AND THEN 180° ANGLE OF ROTATION ON THE NUT. (SEE MAINTENANCE MANUAL MMI4M FOR DETAIL PROCEDURE)
- ⊕ (B1)

AIR SPRING PEDESTAL & FRAME BRACKET ATTACHMENT HARDWARE SPECIFICATIONS ARE THE RESPONSIBILITY OF THE INSTALLER



SECTION A-A



CAD FILES		
FILE NAME	REV.	VER
DRAWING 4-60559_39	E.2	
ASSEM 4-60559_39	E.2	

SUSPENSION SERIES: MTA LOW MOUNT SHOWN AT 9.0" RH

APPLY SPECIFIED MERITOR MARKINGS PER DRAFTING ENGINEERING STANDARDS D-004	THIS PRINT IS LOANED ON A CONFIDENTIAL BASIS SUBJECT TO RETURN UPON DEMAND BY MERITOR AND NOTHING HEREON MAY BE REPRODUCED, USED OR DISCLOSED IN WHOLE OR IN PART WITHOUT THE PRIOR WRITTEN PERMISSION OF MERITOR.	MATERIAL	SEE BILL OF MATERIAL FOR SPECIFIC INDIVIDUAL MODEL INFORMATION				124403	PART/DWG NO. 4-60559_39	EDC 00909
			PROCESS	APPROVED	DRAWN BY	CHECKED BY	3RD ANGLE PROJECTION	DRAWING SIZE	NAME
		INQUIRY NO.	C.R./T.E. NO.	APP. NO.	ORIGINAL FOR	SCALE	DESIGN CONTROL GROUP	PART NO.	
			PCCR 119179-A01		MTA 23L / 25L / 30L	1:4	W.W. TRAILER PRODUCTS		

DO NOT CHANGE MANUALLY