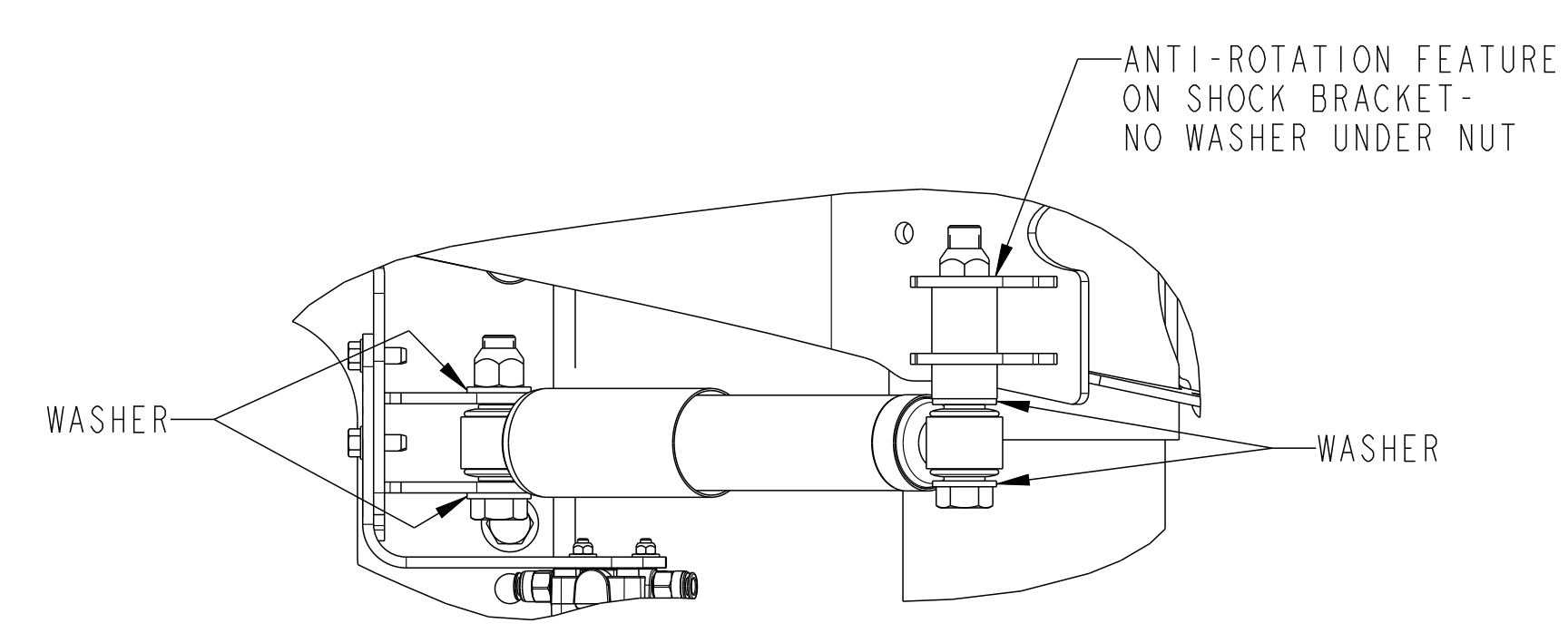
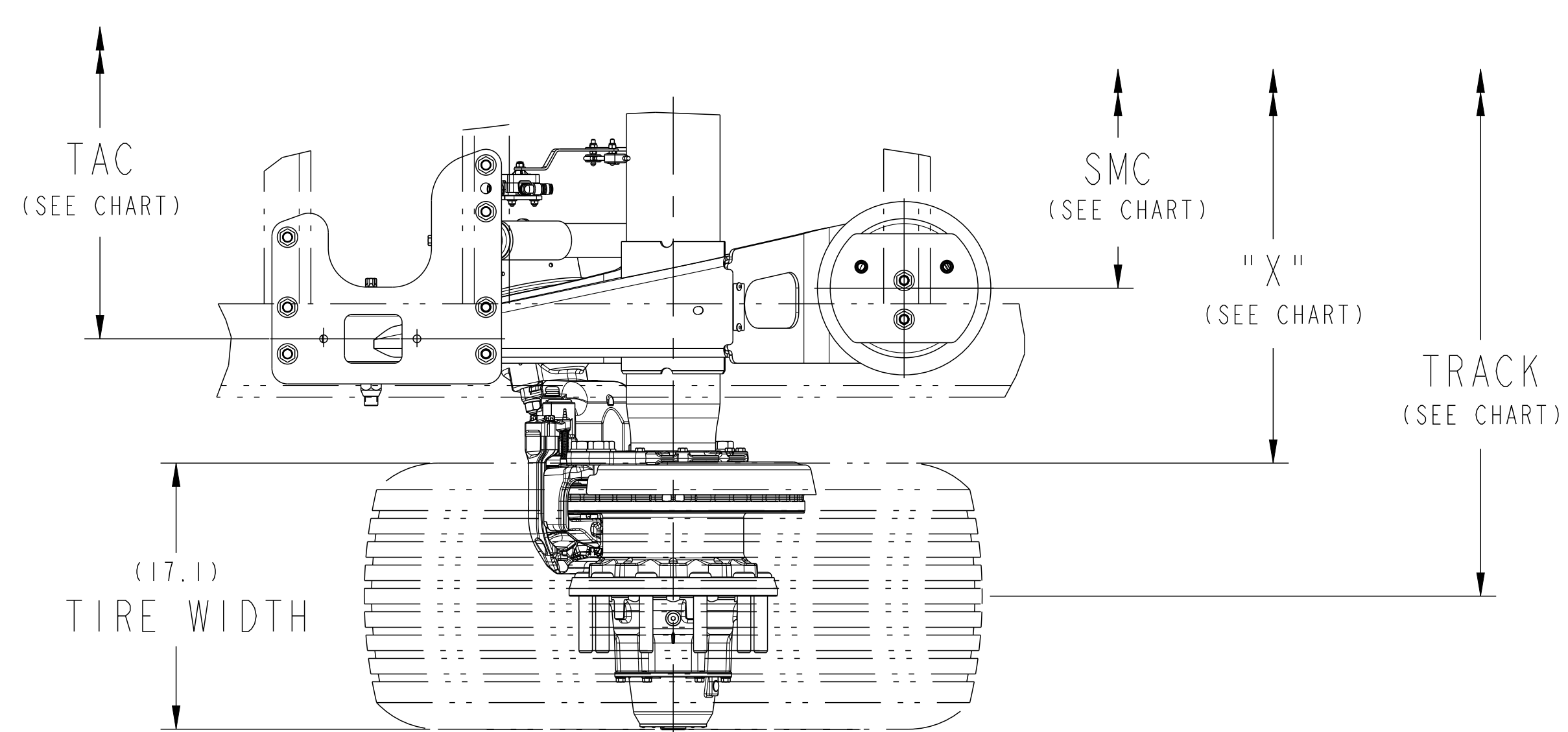
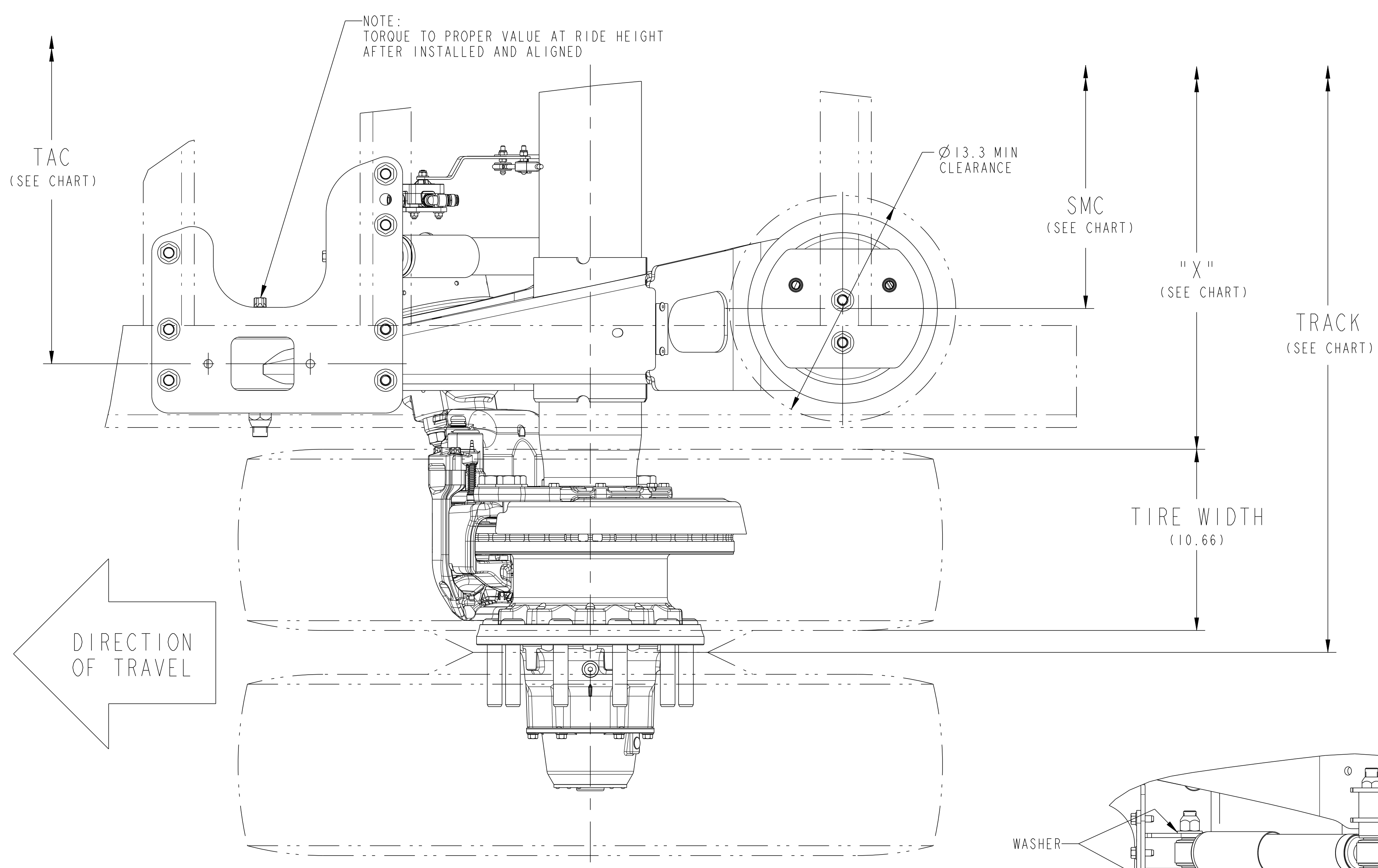


Revision: B.6
STATE: Engineering Released
EXPORT_CONTROL=EAR - EAR99

SIM. PARTS		5-70010F		
REVISIONS				
A	INITIAL RELEASE OF 5-70010H	ECN-166379 17-JUN-20	MDM SS	
B	1-EX225+LS DISC BRAKE PART NUMBERS WERE EX225S201CG000S AND EX225S202CG000S 2-EX225+L DISC BRAKE PART NUMBERS WERE EX225L271CD000S AND EX225L272CD000S	ECN-175773 24-FEB-21	VMJ CH	

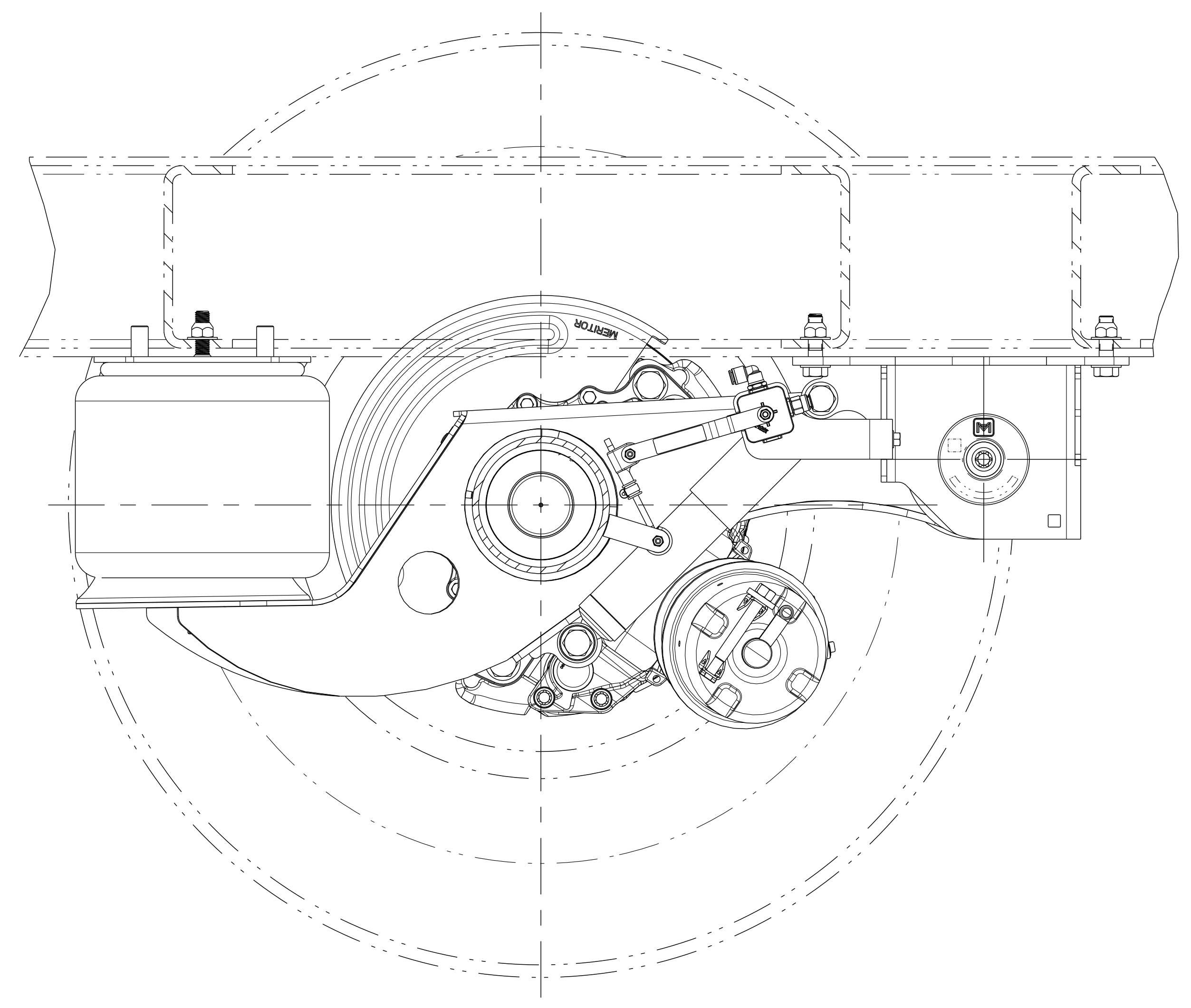
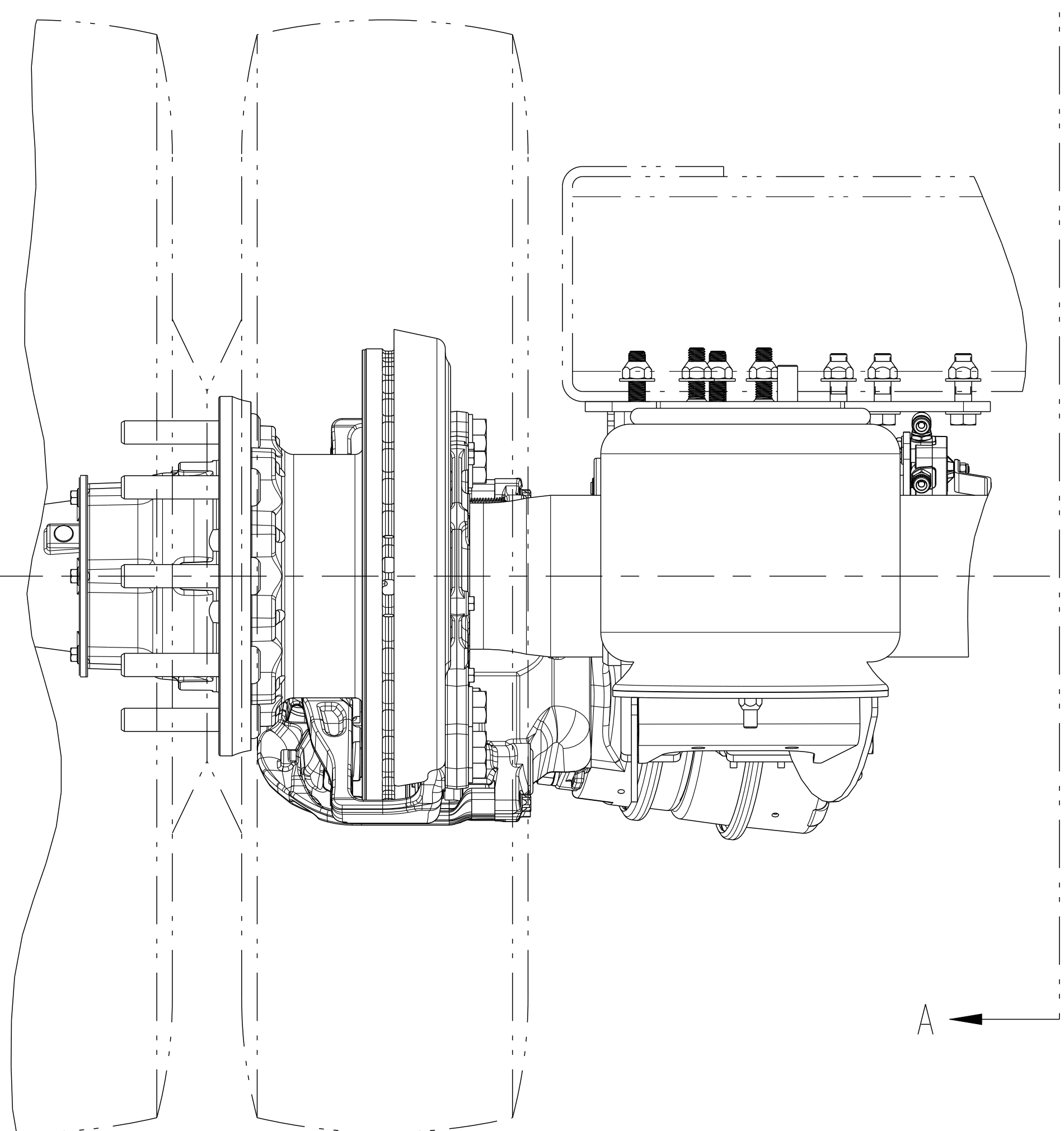
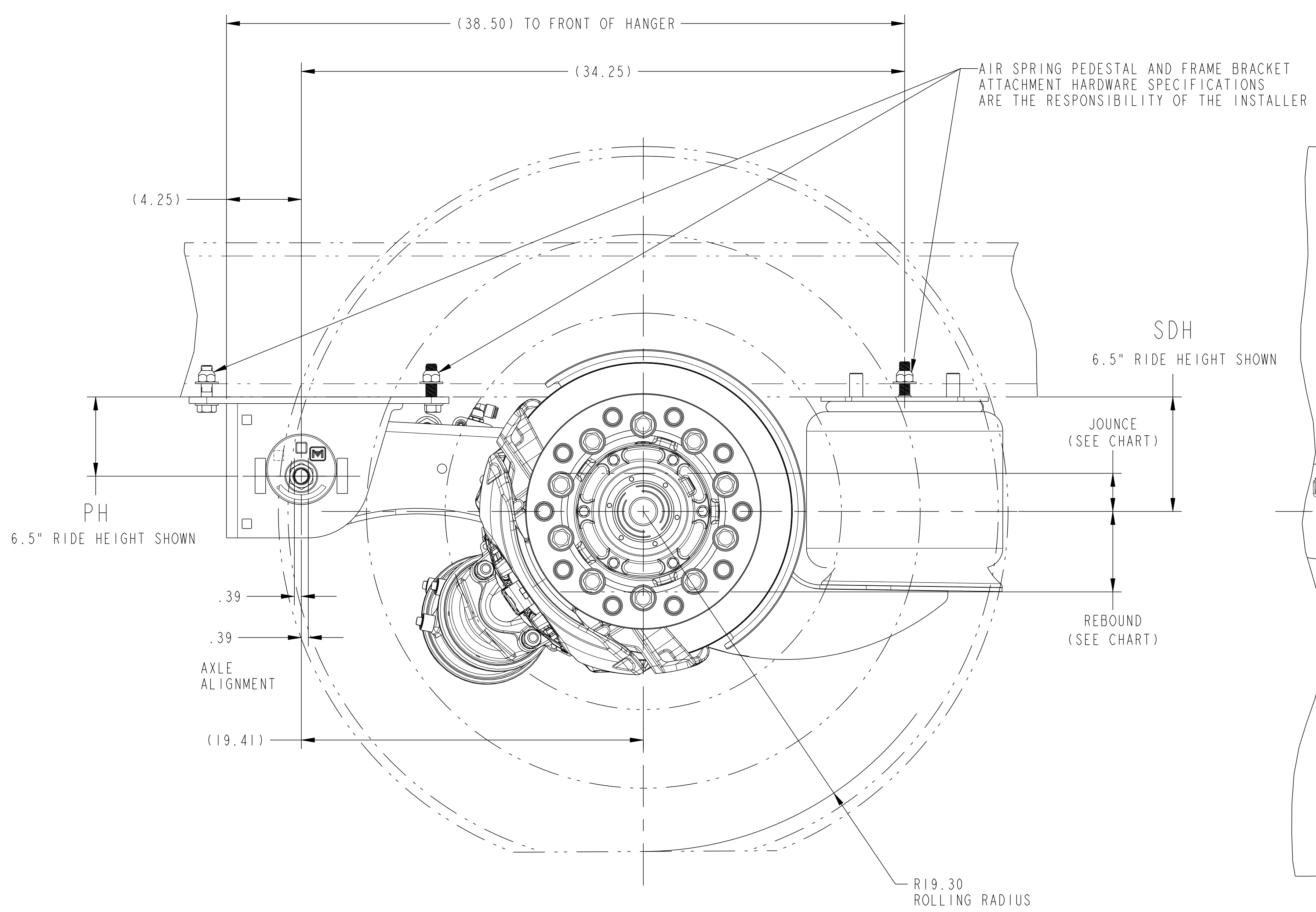
APPLICATION	TRACK	"X" REF.	SMC	TAC
DUAL WHEEL	71.5	46.4	31.0	37.5
DUAL WHEEL	77.5	52.4	37.0	43.5
SUPER SINGLE	83.5	58.4	43.0	49.5



SUPER SINGLE APPLICATION
SCALE 1:8

DUAL WHEEL APPLICATION

TYPICAL SHOCK INSTALLATION
(AIR CHAMBER REMOVED FOR CLARITY)



SECTION A-A

NOTES:

PROPER VEHICLE FRAME DESIGN IN THE AREA OF SUSPENSION ATTACHMENT IS THE RESPONSIBILITY OF THE INSTALLER.

SUSPENSION SERIES: MTA-TEC6-23L

SUSPENSION STATIC DESIGN CAPACITY = 23,000 LBS.

● RATING BASED ON APPLICATION APPROVAL.

RATINGS FOR THE COMPONENTS WITHIN AN INDIVIDUAL MERITOR SUPPLIED SUSPENSION ASSEMBLY, INCLUDING BRAKES, HUBS, AND BEARINGS, MAY VARY AND MAY NOT BE EQUAL TO THE NOMINAL SUSPENSION RATING.

NO WELDING OR DRILLING ALLOWED ON TRAILING ARMS. NO WELD WITHIN .25" OF FRAME BRACKET TOOLING HOLES.

PH	SDH	RIDE HEIGHT	JOUNCE AT BUMPER CONTACT	REBOUND
4.5	6.5	6.5"	1.75	4.98
4.5	7.5	7.5"	2.75	3.98
4.5	8.0	8"	3.25	5.0
4.5	9.0	9"	4.25	4.0
8.0	13.5	12"	4.64	4.5
10.0	14.0	14"	5.02	4.5
10.0	15.0	15"	4.91	3.5
12.0	16.0	16"	5.02	4.5
12.0	17.0	17"	5.29	3.5

FOR FINAL INSTALLATION TO TRAILER REFER TO 5-69116A

REFER TO SHOP CHART 4-60559-43 FOR TORQUE INFORMATION

DATA BASED ON:
DUAL TIRE SIZE: 11R22.5
WHEEL OFFSET: 6.62

SINGLE: TIRE SIZE 44S/50R22.5
WHEEL OFFSET: .56

DISC BRAKE INFORMATION		
COMPONENT	ROADSIDE	CURBSIDE
EX225+L	EX225L271CG000	EX225L272CG000
TORQUE PLATE	3215J2740	3215J2740
EX225+LS	EX225S203CG000	EX225S204CG000
TORQUE PLATE	3215Z2756	3215Z2756

<p>APPLY SPECIFIED MERITOR MARKINGS PER DRAFTING ENGINEERING STANDARDS D-604</p>	<p>THIS PRINT IS LOANED ON A CONFIDENTIAL BASIS SUBJECT TO RETURN UPON DEMAND BY MERITOR AND NOTHING HEREON MAY BE REPRODUCED, USED OR DISCLOSED IN WHOLE OR IN PART WITHOUT THE PRIOR WRITTEN PERMISSION OF MERITOR.</p>	MATERIAL	SEE BILL OF MATERIAL FOR SPECIFIC INDIVIDUAL MODEL INFORMATION	
		PROCESS	PROJECT ENGINEER M. MARCETTI	3RD ANGLE PROJECTION
<p>SCALE: 1:4</p>		DESIGN CONTROL GROUP TRAILERS NA	CHANGE REQUEST # CR-133500	
<p>4 IN. 10THS. WEIGHT RGR./FIN.</p>		ORIGINAL FOR LBS MTA-TEC6-23L	DRAWING 5-70010H B.6	<p>MTA-TEC6-23L WITH EX225 DISC BRAKES FOR BOLT-ON HANGER APPLICATION</p> <p>ECN-166379 PART/DWG NO. 5-70010H 04627</p> <p>RELEASE NAME MTA-TEC6-23L SERIES GROUP ENG. DESG. CODE</p>

DO NOT CHANGE MANUALLY