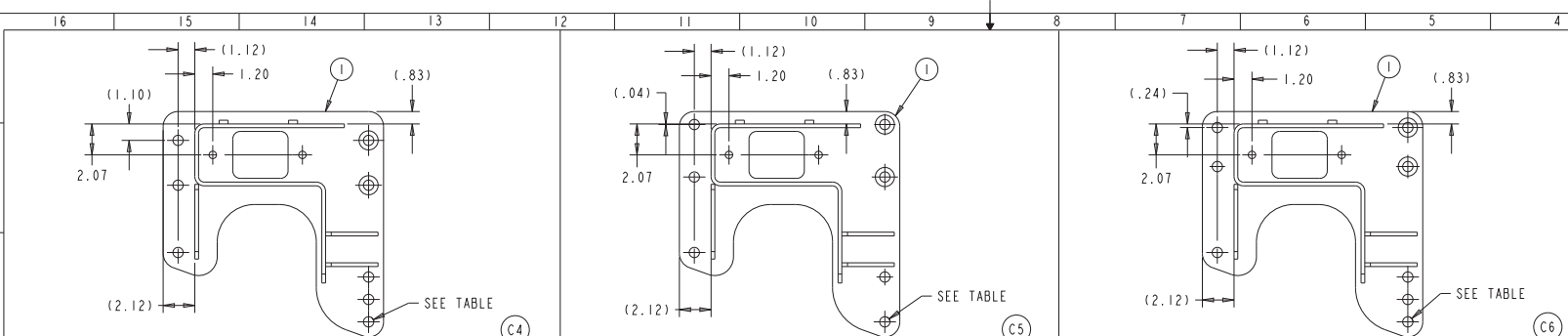


Revision: F.5  
STATE: Engineering Released  
EXPORT\_CONTROL: HARD\_WARE-EAR-EAR99-EXPORT\_CONTROL-EAR-EAR99

DO NOT CHANGE MANUALLY



HOLE PATTERN: S#STANDARD  
STANDARD TOP PLATE

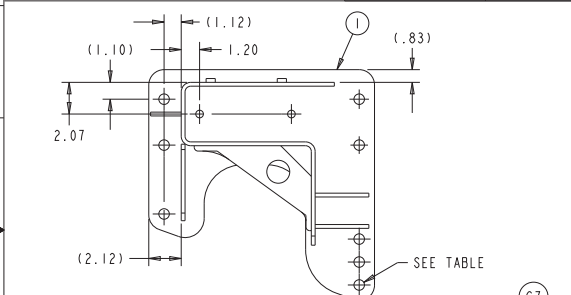
PART NUMBER	HOLE SIZE
3305T4544 (SHOWN)	Ø .688
3305U4545 (OPP.)	
3305H4766 (SHOWN)	Ø .531
3305J4768 (OPP.)	

HOLE PATTERN: S#1  
STANDARD TOP PLATE

PART NUMBER	HOLE SIZE
3305V4546 (SHOWN)	Ø .688
3305W4547 (OPP.)	
3305K4769 (SHOWN)	Ø .531
3305L4770 (OPP.)	

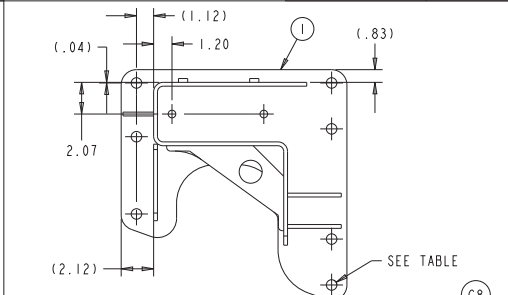
HOLE PATTERN: S#3  
STANDARD TOP PLATE

PART NUMBER	HOLE SIZE
3305X4548 (SHOWN)	Ø .688
3305Y4549 (OPP.)	
3305M4771 (SHOWN)	Ø .531
3305N4772 (OPP.)	



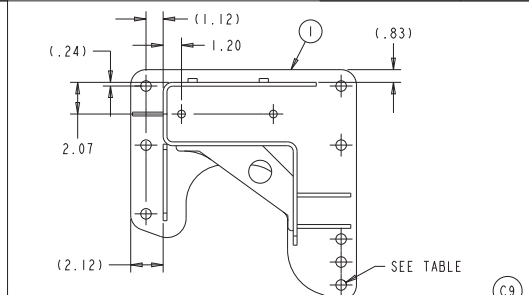
HOLE PATTERN: S#STANDARD  
STANDARD TOP PLATE

PART NUMBER	HOLE SIZE
3305X4626	Ø .688
3305B4760	Ø .531



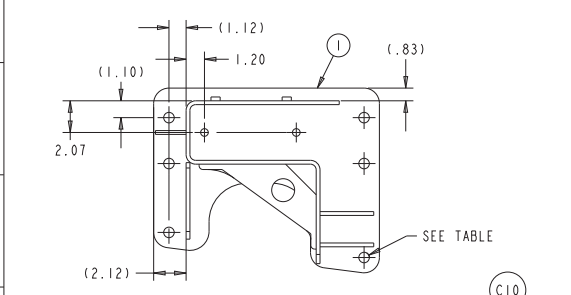
HOLE PATTERN: S#1  
STANDARD TOP PLATE

PART NUMBER	HOLE SIZE
3305Y4627	Ø .688
3305C4761	Ø .531



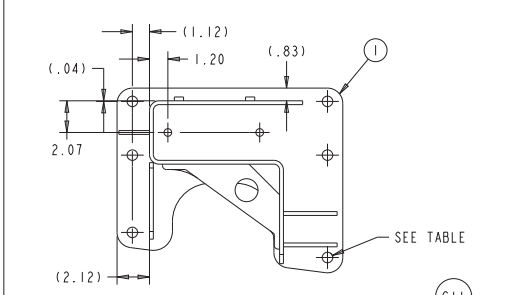
HOLE PATTERN: S#3  
STANDARD TOP PLATE

PART NUMBER	HOLE SIZE
3305Z4628	Ø .688
3305D4762	Ø .531



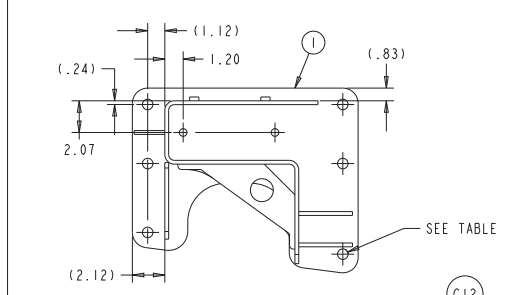
HOLE PATTERN: C#STANDARD  
COMPACT TOP PLATE

PART NUMBER	HOLE SIZE
3305B4162	Ø .688
3305E4763	Ø .531



HOLE PATTERN: C#1  
COMPACT TOP PLATE

PART NUMBER	HOLE SIZE
3305C4163	Ø .688
3305F4764	Ø .531



HOLE PATTERN: C#3  
COMPACT TOP PLATE

PART NUMBER	HOLE SIZE
3305D4164	Ø .688
3305G4765	Ø .531

LAYOUT NO.	
SIM.PARTS	
UNLESS OTHERWISE SPECIFIED	
INTERPRET DRAWING PER ASME Y14.5M-1994 ALL DIMENSIONS IN INCHES. ALL OTHER TOLERANCES: ±.015 ON 3-PLACE DECIMALS ±.01 ON 2-PLACE DECIMALS ±.01 ON ANGULAR DIMENSIONS	ALL MACHINED SURFACE FINISHES $\sqrt{32}$ ALL MACHINED INSIDE CORNERS .030 RADIUS. BREAK ALL SHARP EDGES. REMOVE ALL BURRS, FLASH & PROJECTIONS CASTING TOLERANCES PER STD ISO 8062-3. FORGING TOLERANCES *.06 -.03; DRAFTS "F&I"
REVISIONS	
C	4 THRU 12-ADDED TABLES & Ø .531 PLATE PART NUMBERS
D	RELEASE FOR PRODUCTION
E	UPDATE VIEWS WITH SQUARE LIFT KIT HOLES
F	NO CHANGE TO THIS SHEET
ECN-160829	04-NOV-19 VMJ CH
ECN-166373	06-FEB-20 MDM SS
ECN-167606	30-MAR-20 MDM SS
ECN-169093	24-JUN-20 VMJ SD

NOTE: BOLT-ON APPLICATION

ECN-140836	PART/DWG NO. 4-69317P	04556
RELEASE	NAME BRKT-ASSY FRAME	ENG. DESC. CODE
DRAWING SIZE D		INCH
DRAWING 4-69317P F.5	MODEL 4-69317P F.1	SHEET 5 OF 12



APPLY SPECIFIED MERITOR MARKINGS PER DRAFTING ENGINEERING STANDARDS D-004

THIS PRINT IS LOANED ON A CONFIDENTIAL BASIS SUBJECT TO RETURN UPON DEMAND BY MERITOR AND NOTHING HEREON MAY BE REPRODUCED, USED OR DISCLOSED IN WHOLE OR IN PART WITHOUT THE PRIOR WRITTEN PERMISSION OF MERITOR.

MATERIAL SEE TABLES  
PROCESS SEE SHEET I

PROJECT ENGINEER SCHUCK  
DRAWN BY MARCETTI  
CHECKED BY SCHUCK  
DESIGN CONTROL GROUP TRAILER NA

3RD ANGLE PROJECTION

SCALE 1:4

ORIGINAL FOR LBS MTA-TEC4-23L BOLT-ON

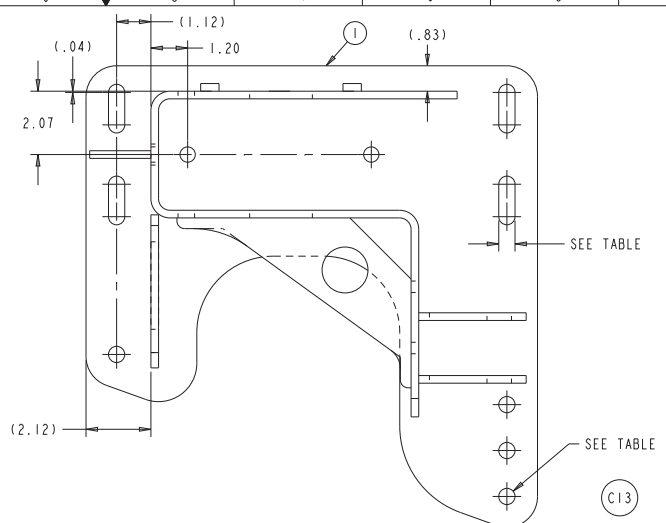
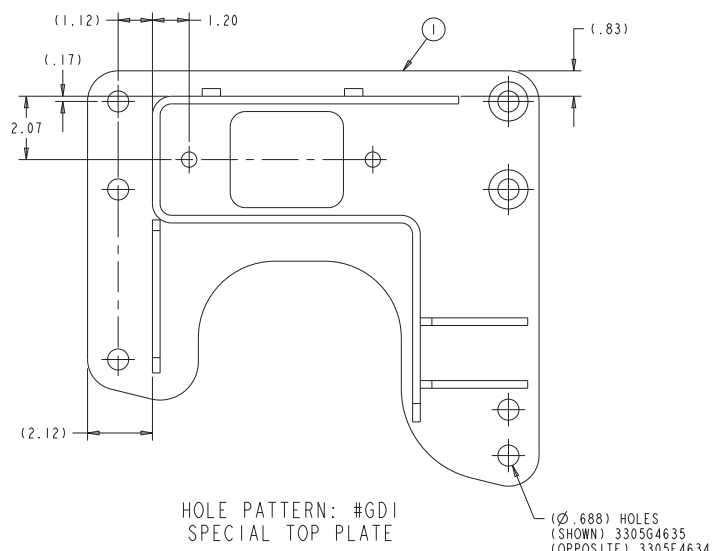
IN. 10THS. HEIGHT .001 IN.  
100MM



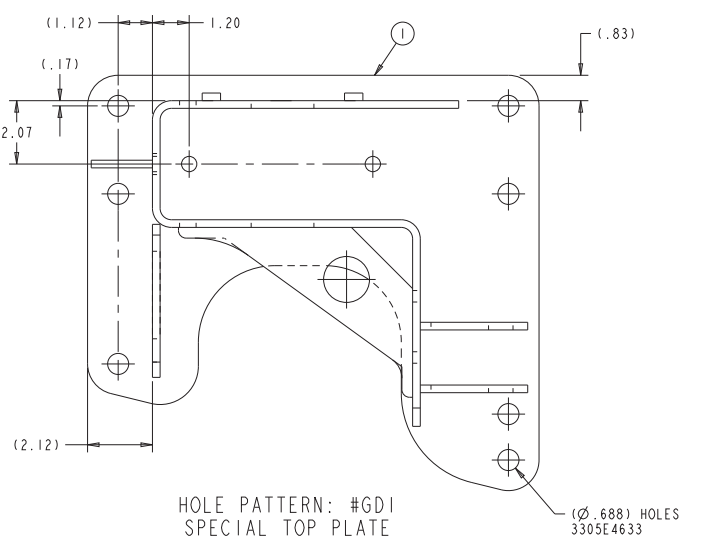
Revision: F.5  
STATE: Engineering Released

EXPORT\_CONTROL: HARD\_WARE-EAR-EAR99,EXPORT\_CONTROL-EAR-EAR99

DO NOT CHANGE MANUALLY



PART NUMBER	HOLE Ø / SLOT SIZE
3305Z4862	.688
3305A4863	.531



LAYOUT NO.		
SIM.PARTS		
UNLESS OTHERWISE SPECIFIED		
INTERPRET DRAWING PER ASME Y14.5M-1994 ALL DIMENSIONS IN INCHES. ALL OTHER TOLERANCES: ±.015 ON 3-PLACE DECIMALS ±.01 ON 2-PLACE DECIMALS ±.01 ON ANGULAR DIMENSIONS	ALL MACHINED SURFACE FINISHES V ALL MACHINED INSIDE CORNERS .030 RADIUS. BREAK ALL SHARP EDGES. REMOVE ALL BURRS, FLASH & PROJECTIONS CASTING TOLERANCES PER STD ISO 8062-3 FORGING TOLERANCES +.06 -.03; DRAFTS "F&I"	359/
REVISIONS		
C	13-ADDED VIEW TO SHOW THE SLOTTED TOP PLATE VIEW DETAILS AND RELATED DIMENSIONS	ECN-160829 04-NOV-19 VMJ CH
D	RELEASE FOR PRODUCTION	ECN-166373 6-FEB-20 MDM SS
E	UPDATE VIEWS WITH SQUARE LIFT KIT HOLES	ECN-167606 30-MAR-20 MDM SS
F	NO CHANGE TO THIS SHEET	ECN-169093 24-JUN-20 VMJ SD

NOTE: BOLT-ON APPLICATION

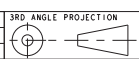


APPLY SPECIFIED METRIC MARKINGS PER DRAFTING ENGINEERING STANDARDS D-004

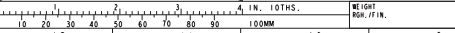
THIS PRINT IS LOANED ON A CONFIDENTIAL BASIS SUBJECT TO RETURN UPON DEMAND BY MERITOR AND NOTHING HEREON MAY BE REPRODUCED, USED OR DISCLOSED IN WHOLE OR IN PART WITHOUT THE PRIOR WRITTEN PERMISSION OF MERITOR.

MATERIAL: SEE TABLES  
PROCESS: SEE SHEET I

PROJECT ENGINEER: SCHUCK  
DRAWN BY: MARCETTI  
CHECKED BY: SCHUCK  
DESIGN CONTROL GROUP: TRAILER NA



ECN-140836	PART/DWG NO. 4-69317P	04556
RELEASE	NAME BRKT-ASSY FRAME	ENG. DESC. CODE
DRAWING SIZE D		INCH
DRAWING 4-69317P F.5	MODEL 4-69317P F.1	SHEET 6 OF 12



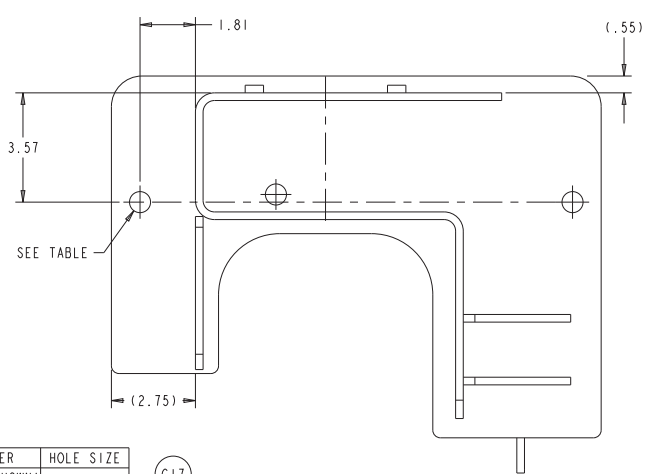
STATE: Engineering Released

EXPORT\_CONTROL: HARD\_WARE=EAR-EAR99;EXPORT\_CONTROL=EAR-EAR99

Revision: F.5

DO NOT CHANGE MANUALLY

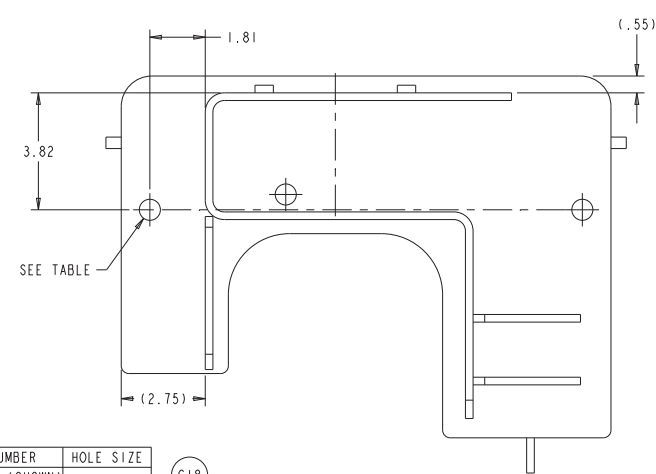
LAYOUT NO.		
SIM.PARTS		
UNLESS OTHERWISE SPECIFIED		
INTERPRET DRAWING PER ASME Y14.5M-1994 ALL DIMENSIONS IN INCHES. ALL OTHER TOLERANCES: ±.015 ON 3-PLACE DECIMALS ±.01 ON 2-PLACE DECIMALS ±.1° ON ANGULAR DIMENSIONS	ALL MACHINED SURFACE FINISHES $\sqrt{32}$ ALL MACHINED INSIDE CORNERS .030 RADIUS. BREAK ALL SHARP EDGES. REMOVE ALL BURRS, FLASH & PROJECTIONS. CASTING TOLERANCES PER STD ISO 8062-3. FORGING TOLERANCES +.06 -.03; DRAFTS "F&I"	
REVISIONS		
C	I7 & I8-ADDED TABLES & Ø .521 PLATE PART NUMBERS	ECN-160829 VMJ 04-NOV-19 CH
D	RELEASE FOR PRODUCTION	ECN-166373 MDM 6-FEB-20 SS
E	UPDATE VIEWS WITH SQUARE LIFT KIT HOLES	ECN-167606 MDM 30-MAR-20 SS
F	NO CHANGE TO THIS SHEET	ECN-169093 VMJ 24-JUN-20 SD



PART NUMBER	HOLE SIZE
3305D4606 (SHOWN)	
3305E4607	Ø .688
3305F4608	
3305H4896	
3305K4899	Ø .521
3305L4900	

C17

HOLE PATTERN: S#STANDARD



PART NUMBER	HOLE SIZE
3305G4609 (SHOWN)	
3305H4610	Ø .688
3305J4612	
3305J4898	
3305M4901	Ø .521
3305N4902	

C18

HOLE PATTERN: S#I

NOTE: SIDE MOUNT APPLICATION

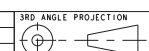


APPLY SPECIFIED MERITOR MARKINGS PER DRAFTING ENGINEERING STANDARDS D-004

THIS PRINT IS LOANED ON A CONFIDENTIAL BASIS SUBJECT TO RETURN UPON DEMAND BY MERITOR AND NOTHING HEREON MAY BE REPRODUCED, USED OR DISCLOSED IN WHOLE OR IN PART WITHOUT THE PRIOR WRITTEN PERMISSION OF MERITOR.

MATERIAL: SEE TABLES  
PROCESS: SEE SHEET I

PROJECT ENGINEER: SCHUCK  
DRAWN BY: MARCETTI  
CHECKED BY: SCHUCK  
SCALE: 1:2  
DESIGN CONTROL GROUP: TRAILER NA



ECN-140836	PART/DWG NO. 4-69317P	04556
RELEASE	NAME BRKT-ASSY FRAME	ENG. DESC. CODE
DRAWING SIZE D		INCH
DRAWING 4-69317P F.5	MODEL 4-69317P F.1	SHEET 10 OF 12

