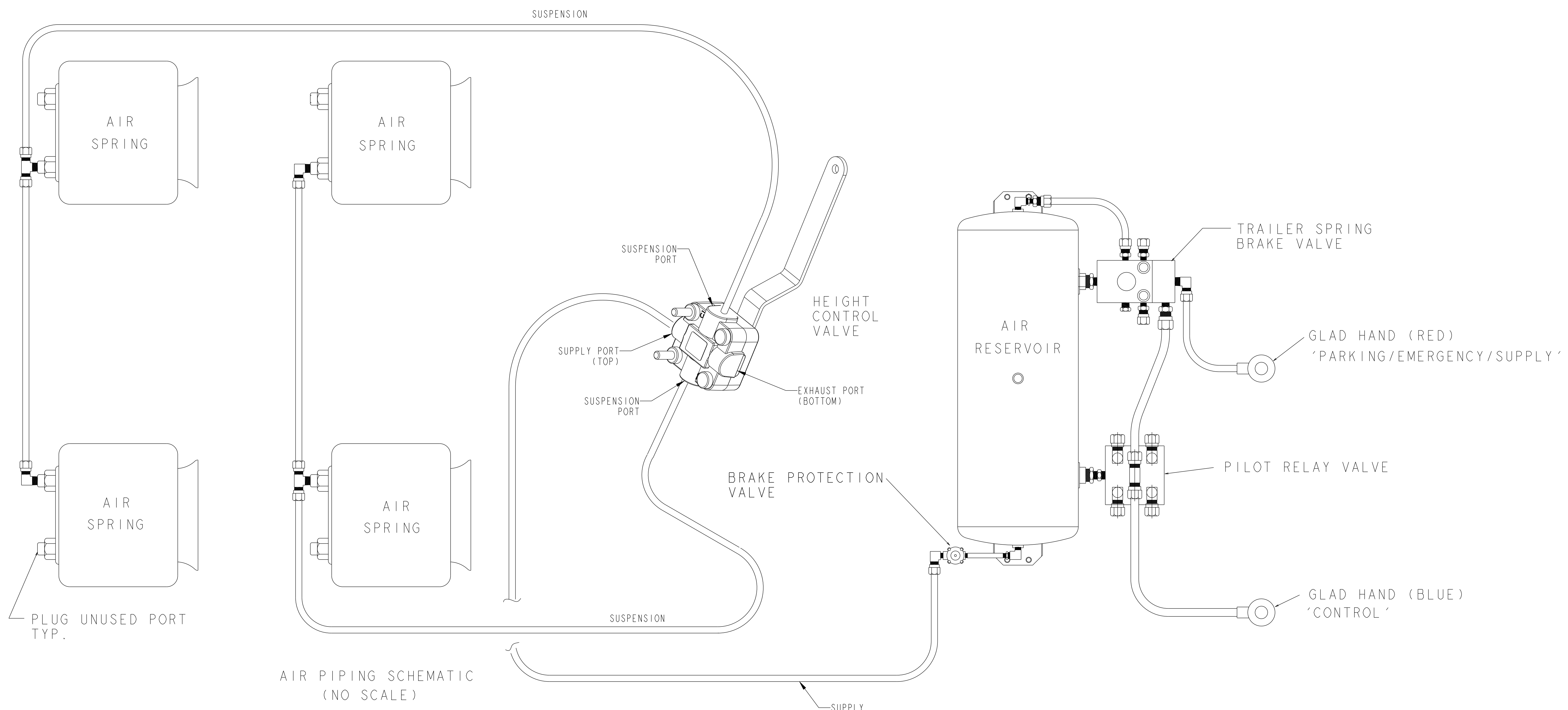
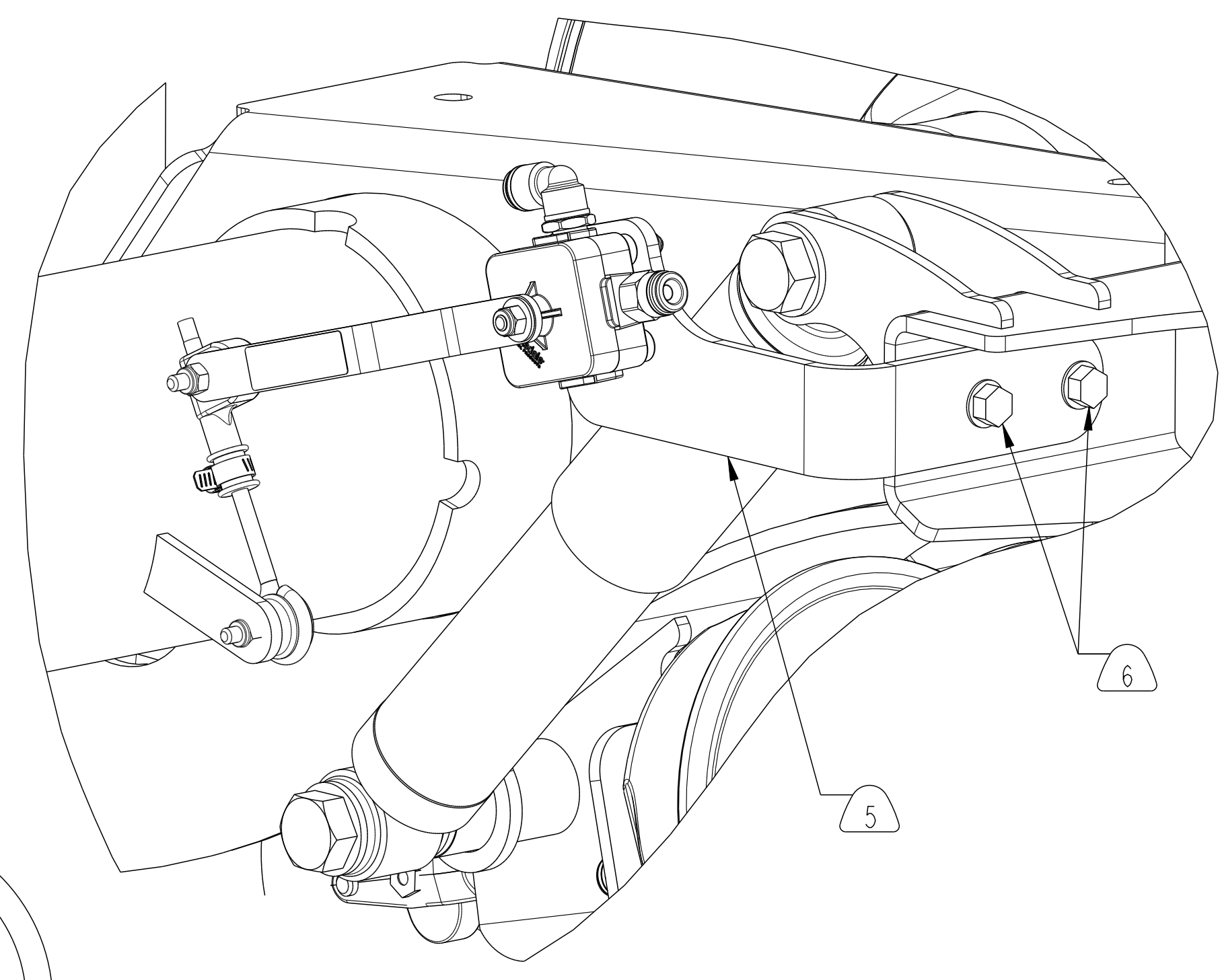
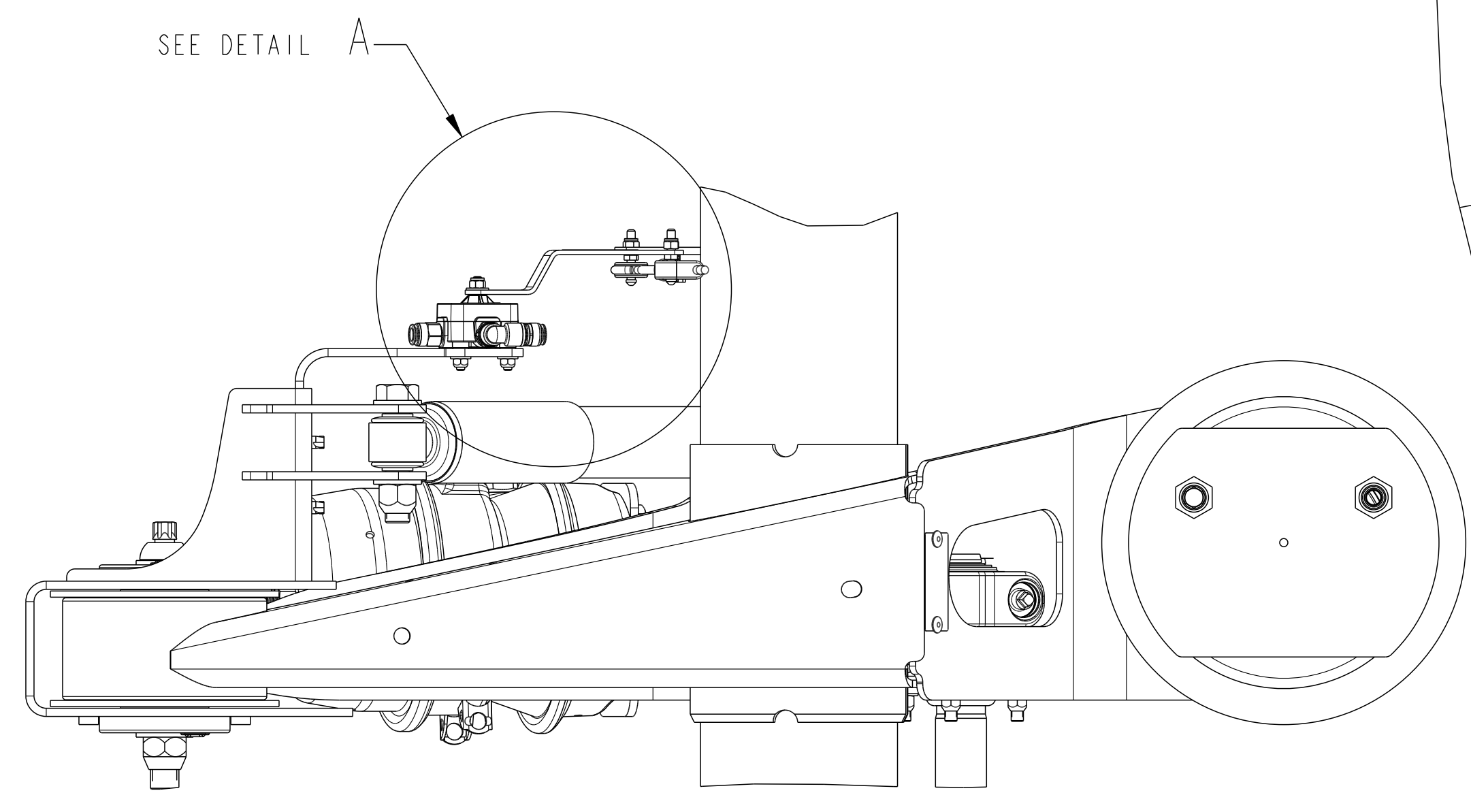
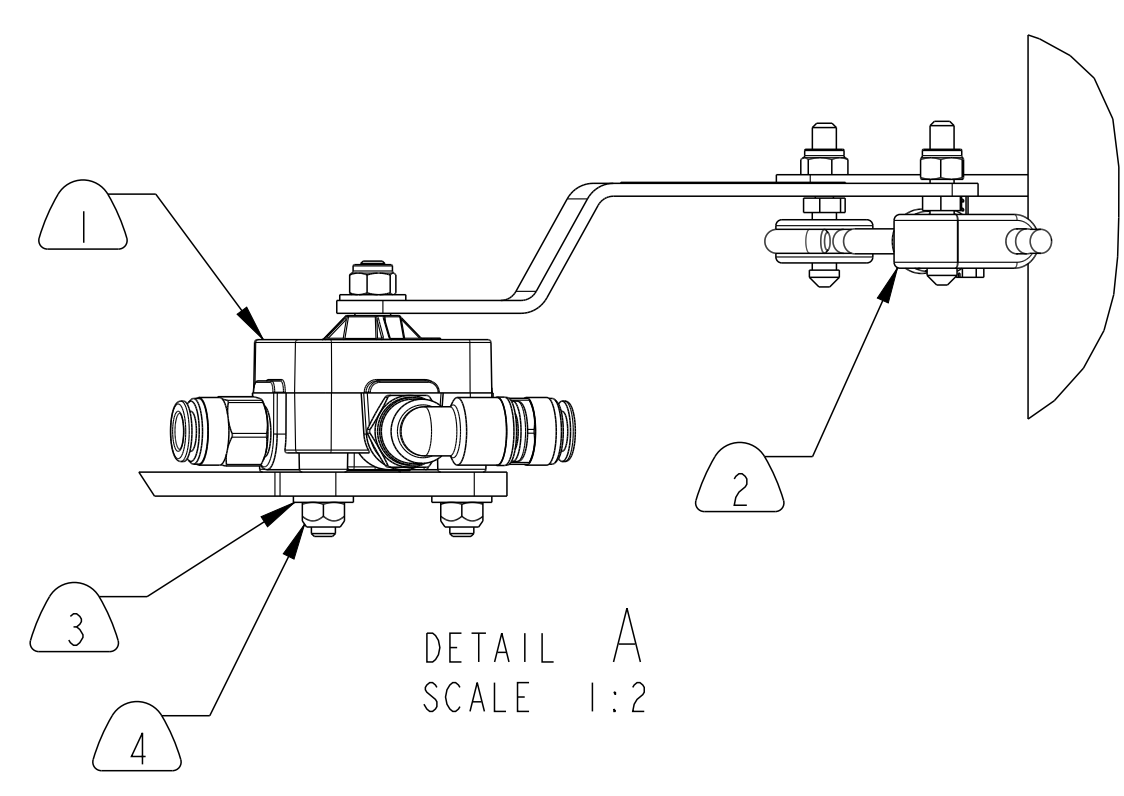


Revision: B.3  
STATE: Engineering Released  
EXPORT\_CONTROL=EAR - EAR99,EXPORT\_CONTROL=EAR - EAR99

- NOTES:
- 1 A-7806D1096 HEIGHT CONTROL VALVE ASSEMBLY (WITHOUT DUMP)
  - 2 A-1245M1209 LINK ASSEMBY (8.50" LENGTH)
  - 3 WA34 WASHER FLAT (2) REQUIRED
  - 4 NL24-1 NUT-LOCK, FIN. (2) REQUIRED
  - 5 3299P7738 BRACKET-HIGHT CONTROL VALVE
  - 6 10X1614 SCREW-SELF TAPPING (2) REQUIRED
  - 7. DO NOT ADD LUBRICATION TO AIR SYSTEM
  - 8. ALL CONNECTIONS MUST BE LEAK FREE
  - 9. AVOID SHARP BENDS IN AIR LINES
  - 10. CUSTOMER TO SUPPLY ALL TUBING AND FITTINGS



SIM. PARTS		REVISIONS	
A	INITIAL RELEASE	ECN-165866 17-JAN-20	MDM SS
B	UPDATED COMPONENTS TO LATEST REVISIONS	ECN-166379 17-JUN-20	MDM SS

DO NOT CHANGE MANUALLY

APPLY SPECIFIED MERITOR MARKINGS PER DRAFTING ENGINEERING STANDARDS D-004		THIS PRINT IS LOANED ON A CONFIDENTIAL BASIS SUBJECT TO RETURN UPON DEMAND BY MERITOR AND NOTHING HEREON MAY BE REPRODUCED, USED OR DISCLOSED IN WHOLE OR IN PART WITHOUT THE PRIOR WRITTEN PERMISSION OF MERITOR.		MATERIAL 0.000 ORIGINAL FOR LBS MTA-TEC6-23L		PROCESS		PROJECT ENGINEER DRAWN BY CHECKED BY		S. SATAM M. MARCETTI S. SATAM		3RD ANGLE PROJECTION		DRAWING SIZE E		DRAWING 5-65443BM B.3		PART/DWG NO. 5-65443BM		04498	
4 IN. 10THS. 100MM		WEIGHT GRM./FIN.		SCALE 1:4		DESIGN CONTROL GROUP TRAILER N/A		CHANGE REQUEST # CR-133500		DRAWING 5-65443BM B.3		MODEL 5-65443BM B.1		SHEET 1 OF 1		NAME SUSPENSION AIR SYSTEM ASSY		ENG. DESG. CODE		INCH	