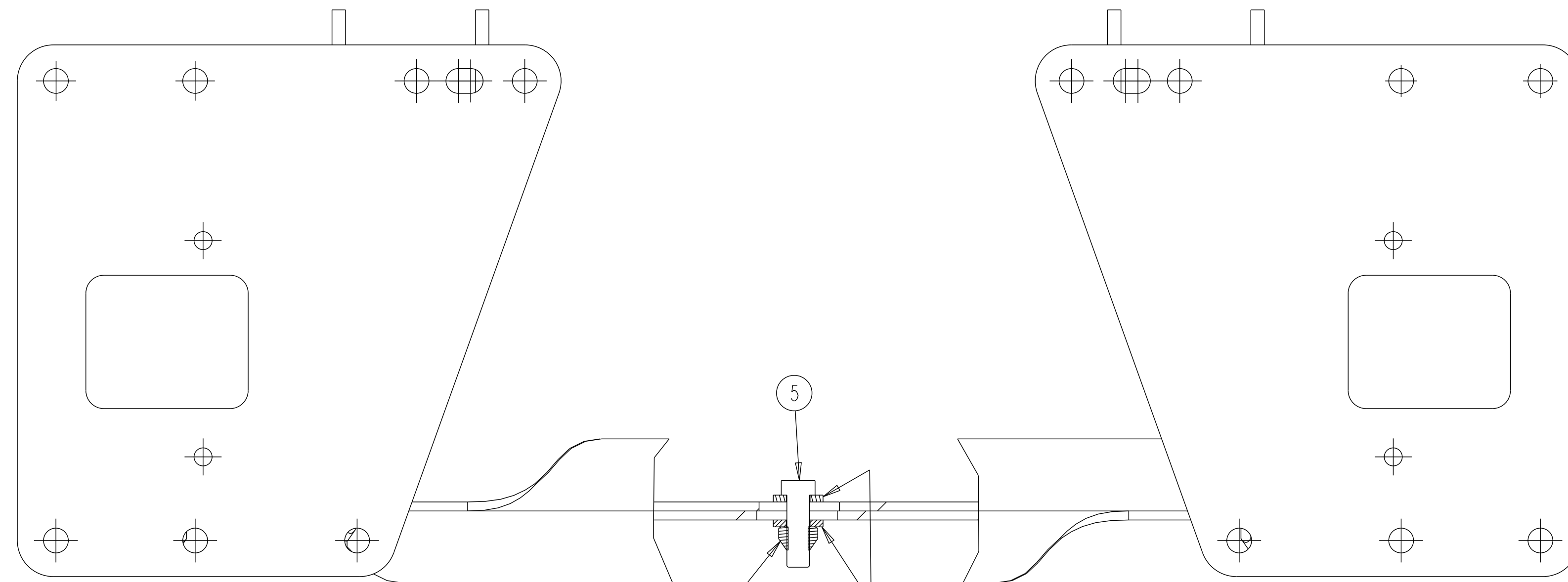


INSTALLATION INSTRUCTIONS

- 1) MOUNT FRAME BRACKETS TO TRAILER FRAME USING LOOSELY INSTALLED HARDWARE.
- 2) MOUNT FIRST ANGLE BRACE WITH THE FLANGE FACING UP AND REARWARD, USING LOOSELY INSTALLED HARDWARE.
- 3) MOUNT SECOND ANGLE BRACE WITH THE FLANGE FACING UP AND FORWARD, USING LOOSELY INSTALLED HARDWARE.
- 4) TIGHTEN FRAME BRACKET HARDWARE.
- 5) TIGHTEN ANGLE BRACE HARDWARE. TIGHTEN THE FOUR OUTER BOLTS FIRST, AND THE CENTER BOLT LAST.

APPLIES TO MTA 25/30L- 6.5"-19" RIDE HEIGHTS AND MTA-TEC6-23L- 6.5"-17" RIDE HEIGHTS (MTA25L 4.5" PIVOT HEIGHT HANGER SHOWN)



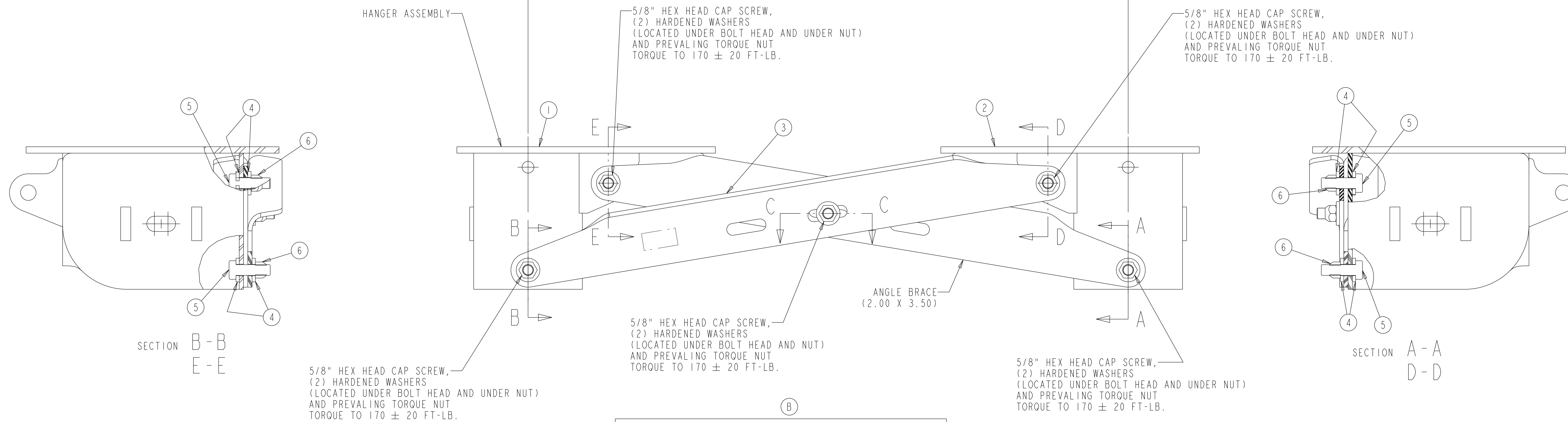
SECTION C-C

"TAC" FOR MTA-TEC6-23L APPLICATION

- 37.50 ± .06 (71.5 TRACK WIDTH)
- 43.50 ± .06 (77.5 TRACK WIDTH)
- 49.50 ± .06 (83.5 TRACK WIDTH)

"TAC" FOR OTHER MTA APPLICATIONS

- 35.00 ± .06 (71.5 TRACK WIDTH)
- 41.00 ± .06 (77.5 TRACK WIDTH)
- 47.00 ± .06 (83.5 TRACK WIDTH)



SECTION B-B
E-E

SECTION A-A
D-D

5/8" HEX HEAD CAP SCREW,
(2) HARDENED WASHERS
(LOCATED UNDER BOLT HEAD AND UNDER NUT)
AND PREVAILING TORQUE NUT
TORQUE TO 170 ± 20 FT-LB.

5/8" HEX HEAD CAP SCREW,
(2) HARDENED WASHERS
(LOCATED UNDER BOLT HEAD AND NUT)
AND PREVAILING TORQUE NUT
TORQUE TO 170 ± 20 FT-LB.

5/8" HEX HEAD CAP SCREW,
(2) HARDENED WASHERS
(LOCATED UNDER BOLT HEAD AND UNDER NUT)
AND PREVAILING TORQUE NUT
TORQUE TO 170 ± 20 FT-LB.

5/8" HEX HEAD CAP SCREW,
(2) HARDENED WASHERS
(LOCATED UNDER BOLT HEAD AND UNDER NUT)
AND PREVAILING TORQUE NUT
TORQUE TO 170 ± 20 FT-LB.

GUSSET PLATE INFO.

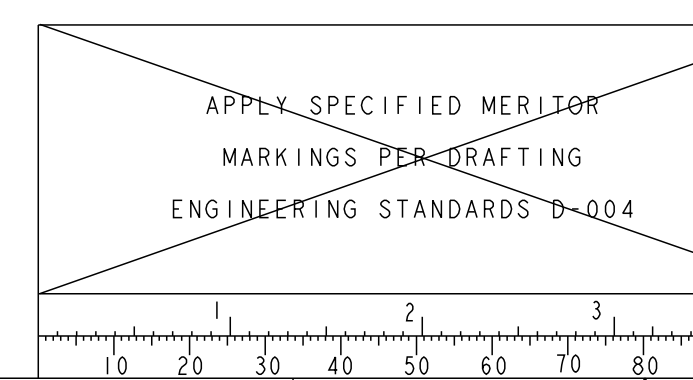
MODEL	TAC	RH	GUSSET PLATE
MTA-Tec6-23L	49.5	ALL	3305C4605
MTA-Tec6-23L	43.5	ALL	3305B4604
MTA-Tec6-23L	37.5	ALL	3305A4603
MTAxxL	47.0	6.5"-7.5" 8"-9"	3305P3916
MTAxxL	41.0	6.5"-7.5" 8"-9"	3305N3914
MTAxxL	35.0	6.5"-7.5" 8"-9"	3305M3913
MTAxxL	47.0	12"14"15" 16"17"19"	3305R3632
MTAxxL	41.0	12"14"15" 16"17"19"	3305G3387
MTAxxL	35.0	12"14"15" 16"17"19"	3305G3335

BOLT-ON HANGER SUPPORT COMPONENTS

ITEM #	PART NAME	DESCRIPTION	MERITOR PART NUMBER	QTY
-	MTA LOW MOUNT INSTALLATION DRAWING	5-69116A	5-69116A	1
1	FRAME BRKT ASSY	SEE B.O.M.	SEE B.O.M.	1
2	FRAME BRKT ASSY	SEE B.O.M.	SEE B.O.M.	1
3	GUSSET PLATE	SEE B.O.M.	SEE B.O.M.	2
4	WASHER-FLAT	5/8" HARDENED FLAT WASHER	1229N1626	10
5	SCREW-CAP	5/8-11 X 2.00 GRADE 8 BOLT	S-21016-M-2	5
6	NUT-LOCK, FIN.	5/8-11-UNC-2B GRADE C	NL-210-M-2	5

SIM. PARTS		
5-69116_01		
REVISIONS		
A	RELEASE 5-69116A FOR PRODUCTION.	ECN-141857 24-JAN-18 LGS NB
B	CHG PH COLUMN TO RH & REVISE INFO	ECN-158446 24-APR-19 MDM SS
C	1-COLUMN NAME WAS "SUPPLIED BY INSTALLER", 2-ADDED FASTENER PART NUMBERS	ECN-163657 11-OCT-19 MDM SS

DO NOT CHANGE MANUALLY



THIS PRINT IS LOANED ON A CONFIDENTIAL BASIS SUBJECT TO RETURN UPON DEMAND BY MERITOR AND NOTHING HEREON MAY BE REPRODUCED, USED OR DISCLOSED IN WHOLE OR IN PART WITHOUT THE PRIOR WRITTEN PERMISSION OF MERITOR.

APPLY SPECIFIED MERITOR MARKINGS PER DRAFTING ENGINEERING STANDARDS D-604

ORIGINAL FOR MTA LOW MOUNT

SCALE 19:50

DESIGN CONTROL GROUP TRAILER NA

CHANGE REQUEST # 133500

PROJECT ENGINEER L.G.S
DRAWN BY N.B.
CHECKED BY L.G.S.

3RD ANGLE PROJECTION

DRAWING SIZE E

DRAWING 5-69116A C.2

MODEL 5-69116A C.1

SHEET 1 OF 1

ECN-141857 PART/DWG NO. 5-69116A 00050

RELEASE NAME MTA LOW MOUNT INSTALLATION LAYOUT ENG. DESG. CODE

MERITOR INCH