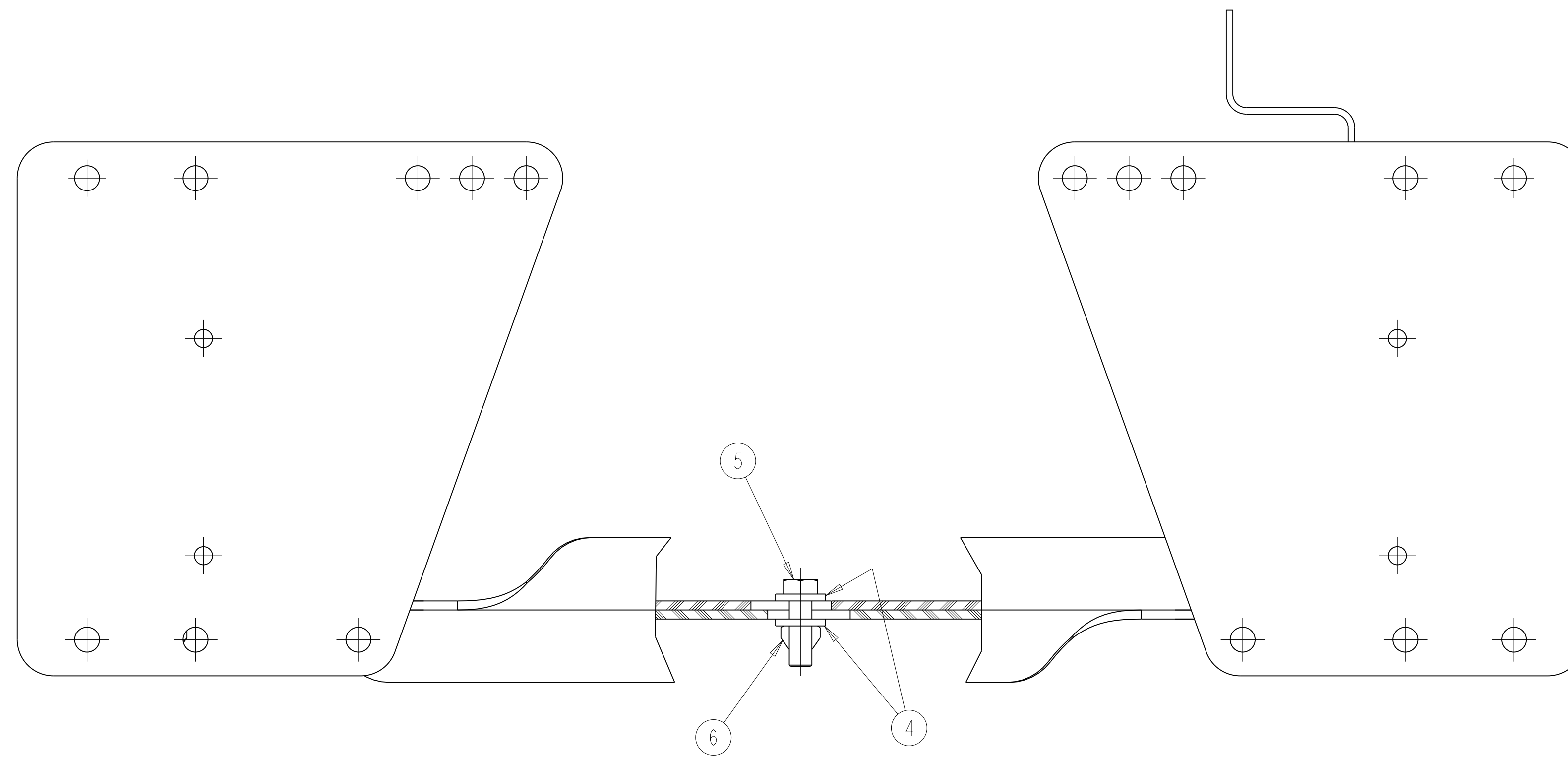


INSTALLATION INSTRUCTIONS

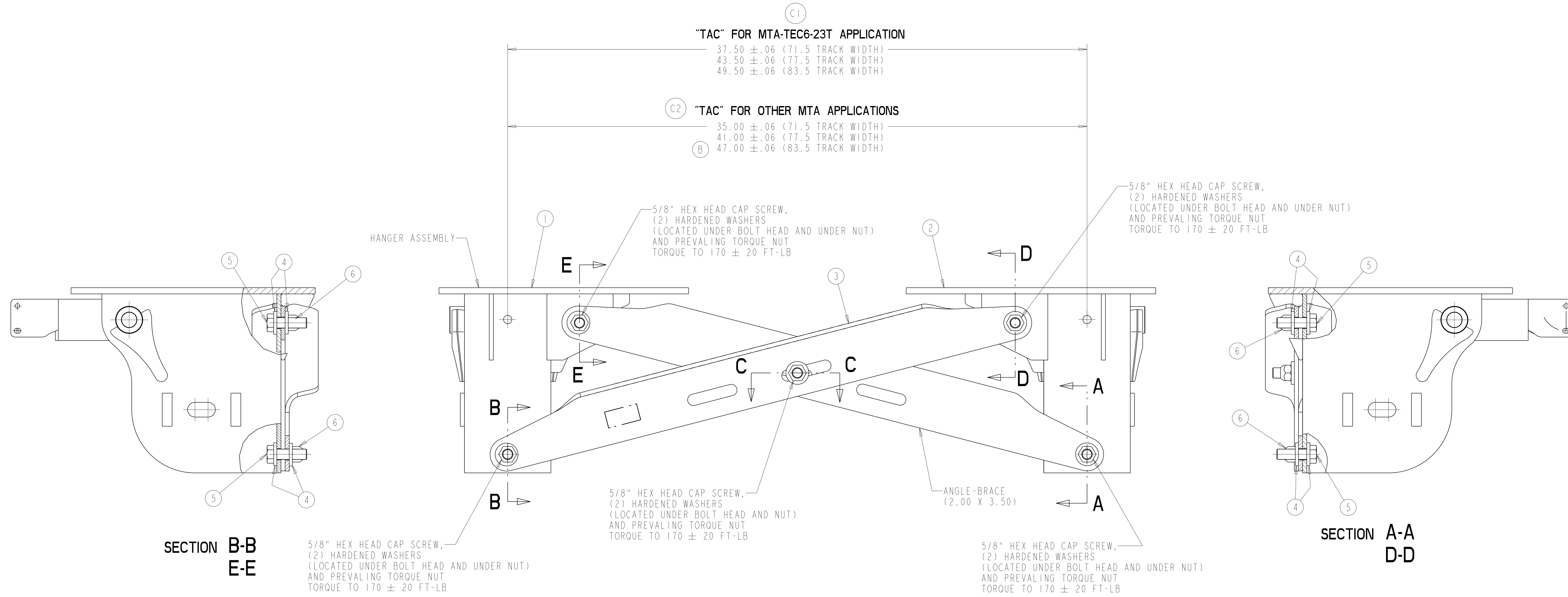
- 1) MOUNT FRAME BRACKETS TO TRAILER FRAME USING LOOSELY INSTALLED HARDWARE
- 2) MOUNT FIRST ANGLE BRACE WITH THE FLANGE FACING UP AND REARWARD, USING LOOSELY INSTALLED HARDWARE
- 3) MOUNT SECOND ANGLE BRACE WITH THE FLANGE FACING UP AND FORWARD, USING LOOSELY INSTALLED HARDWARE
- 4) TIGHTEN FRAME BRACKET HARDWARE
- 5) TIGHTEN ANGLE BRACE HARDWARE
TIGHTEN THE FOUR OUTER BOLTS FIRST, AND THE CENTER BOLT LAST

C3

APPLIES TO MTA-TEC6-23T,
MTA23T, MTA25T & MTA30T
(MTA23T SHOWN)



SECTION C-C



C1
"TAC" FOR MTA-TEC6-23T APPLICATION
37.50 ± .06 (71.5 TRACK WIDTH)
43.50 ± .06 (77.5 TRACK WIDTH)
49.50 ± .06 (83.5 TRACK WIDTH)

C2
"TAC" FOR OTHER MTA APPLICATIONS
35.00 ± .06 (71.5 TRACK WIDTH)
41.00 ± .06 (77.5 TRACK WIDTH)
B 47.00 ± .06 (83.5 TRACK WIDTH)

CAD FILES		
FILE NAME	REV.	VER
DRAWING 5-69116	H.3	
ASSEM 5-69116	H.3	

MODEL	TAC	GUSSET PLATE
MTA-Tec6	49.5	3305C4605
MTA-Tec6	43.5	3305B4604
MTA-Tec6	37.5	3305A4603
MTAxxT	47.0	3305R3632
MTAxxT	41.0	3305G3387
MTAxxT	35.0	3305G3335

ITEM #	PART NAME	DESCRIPTION	MERITOR PART NUMBER	QTY
-	MTA23T INSTALLATION DRAWING	5-69116	5-69116	1
1	FRAME BRKT ASSY	SEE BOM	SEE BOM	1
2	FRAME BRKT ASSY	SEE BOM	SEE BOM	1
3	GUSSET PLATE	SEE GUSSET PLATE TABLE	SEE BOM	2
4	WASHER-FLAT	5/8" HARDENED FLAT WASHER	1229N1626	10
5	SCREW-CAP	5/8-11 X 2.00 GRADE 8 BOLT	S-21016-M-2	5
6	NUT-LOCK, FIN	5/8-11-UNC-2B GRADE C	NL-210-M-1	5

APPLY SPECIFIED MERITOR MARKINGS TO DRAFTING ENGINEERING STANDARDS D-504	THIS PRINT IS LOANED ON A CONFIDENTIAL BASIS SUBJECT TO RETURN UPON DEMAND BY MERITOR AND NOTHING HEREON MAY BE REPRODUCED, USED OR DISCLOSED IN WHOLE OR IN PART WITHOUT THE PRIOR WRITTEN PERMISSION OF MERITOR.	MATERIAL - PROCESS -	APPROVED SAIEG	DRAWN BY C.HOLT 05-26-11	CHECKED BY S.S. 05-27-11	3RD ANGLE PROJECTION	DRAWING SIZE E	115875 RELEASE	PART/DWG NO. 5-69116	EDC 00050
			C.H. F.T.E. NO. APP. NO. 122647-002	ORIGINAL FOR MTA23T LITE, MTA23T, MTA25T & MTA30T	SCALE 19:50	DESIGN CONTROL GROUP W.W. TRAILER PROD.	PART NO.			

DO NOT CHANGE MANUALLY