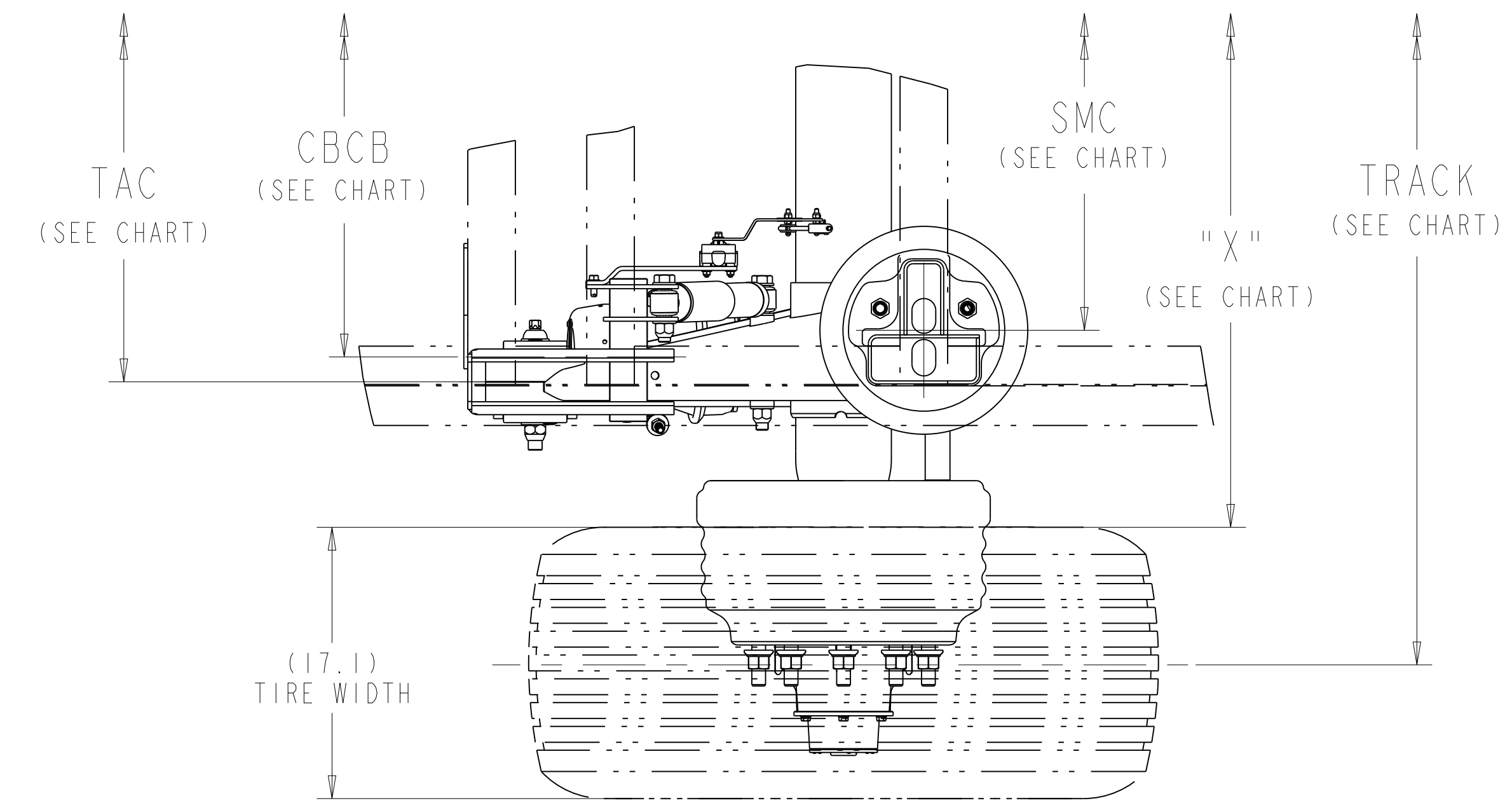


APPLICATION	TRACK	CAM CLOCKING	"X" REF.	CBCB	SMC	TAC
DUAL WHEEL	71.5	BAR 103°	46.4	34.50	31.0	37.5
DUAL WHEEL	77.5	BAR 103°	52.4	40.50	37.0	43.5
SUPER SINGLE	83.5	BAR 103°	58.4	46.50	43.0	49.5

SIM. PARTS		REVISIONS	
A	RELEASE 5-70010A FOR PRODUCTION	ECN-130875 4/25/16	CH SS
B	UPDATED VIEWS AND INFO. TO LATEST	ECN-133727 13-DEC-17	CH VL
C	UPDATED VIEWS TO LATEST TRAILING ARMS & PIVOT BOLT	ECN-155887 29-APR-19	CH SS
D	1-3) ADDED REF. DIMENSION	ECN-164598 11-DEC-19	CH DL



SUPER SINGLE APPLICATION

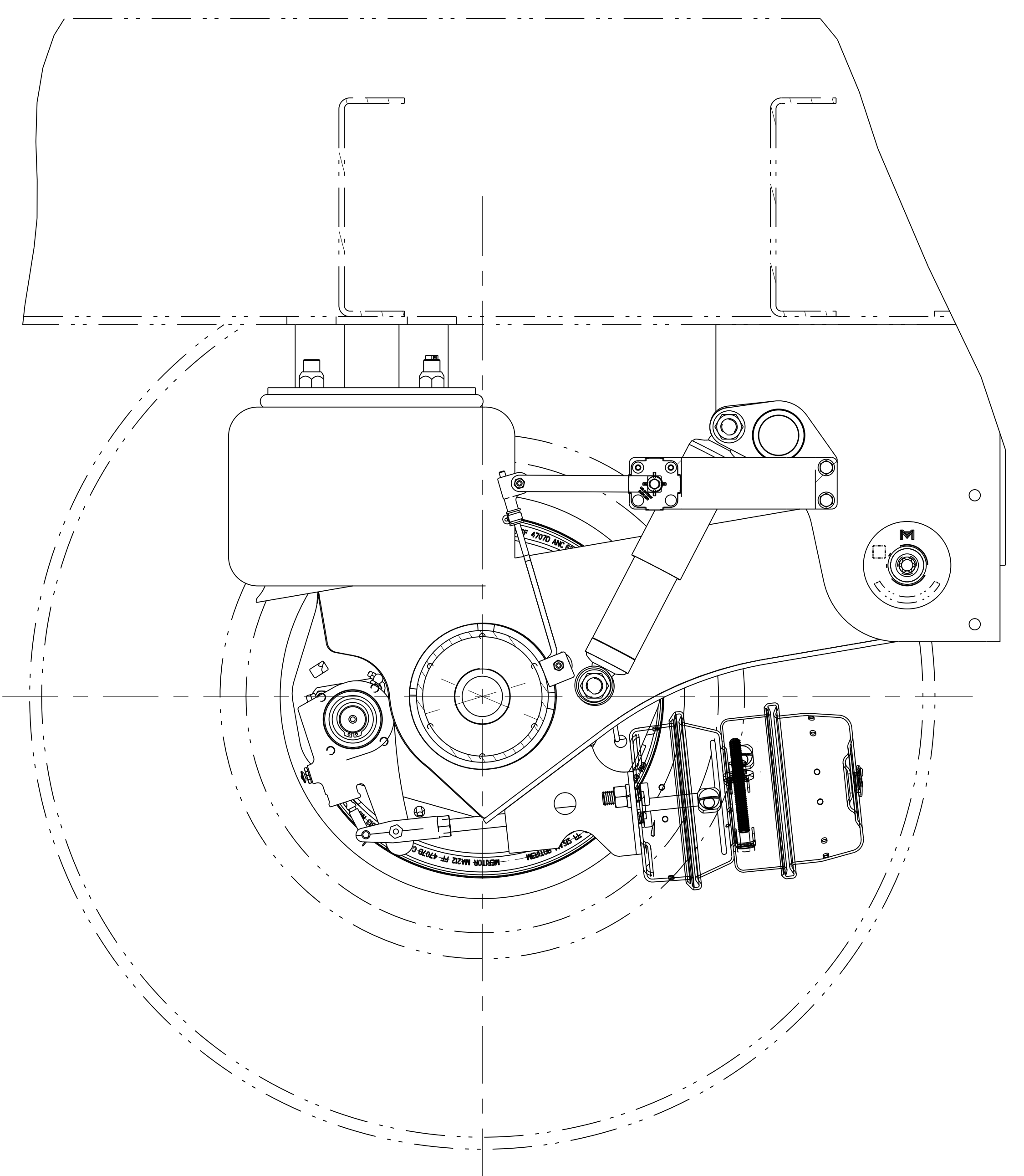
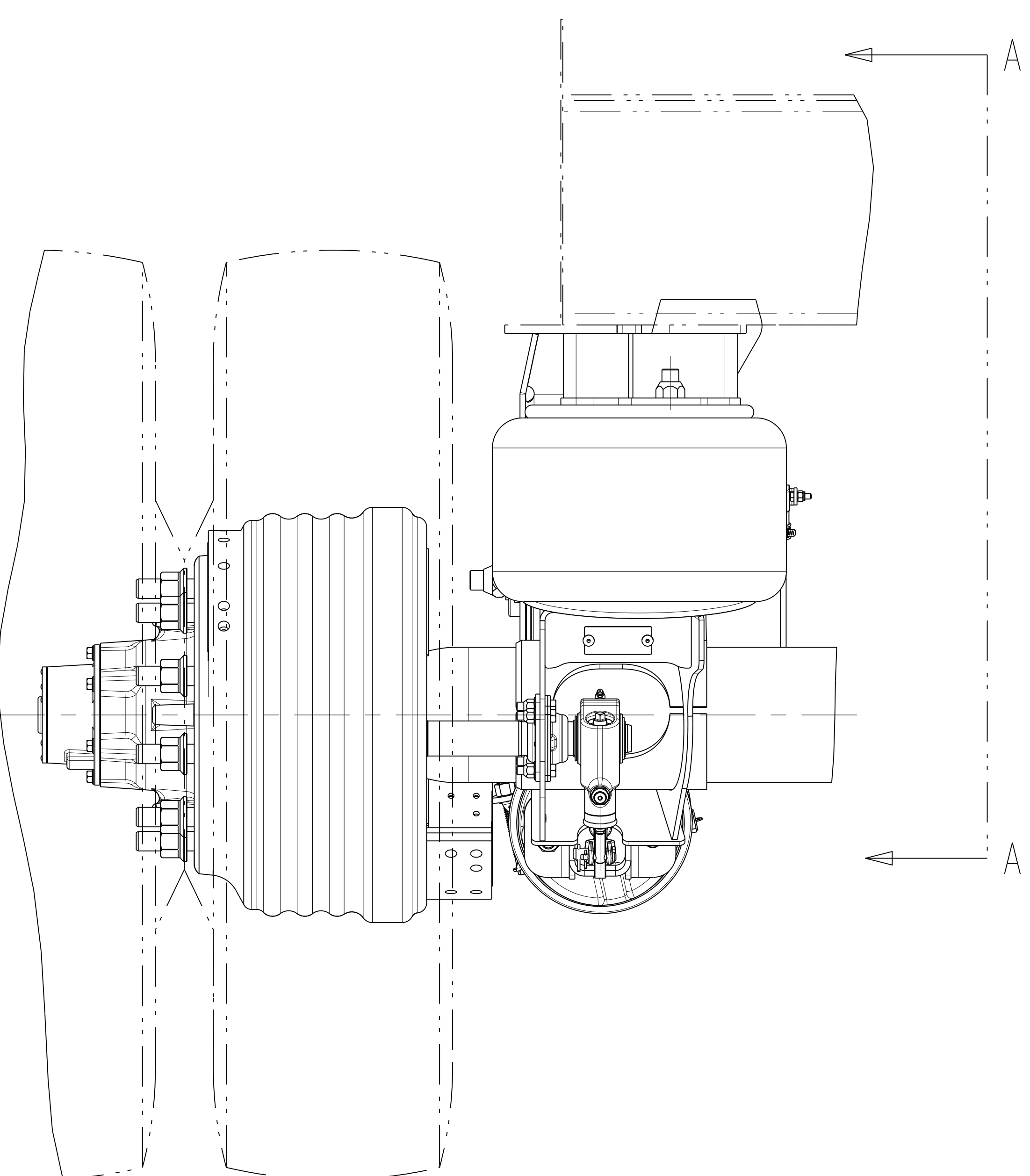
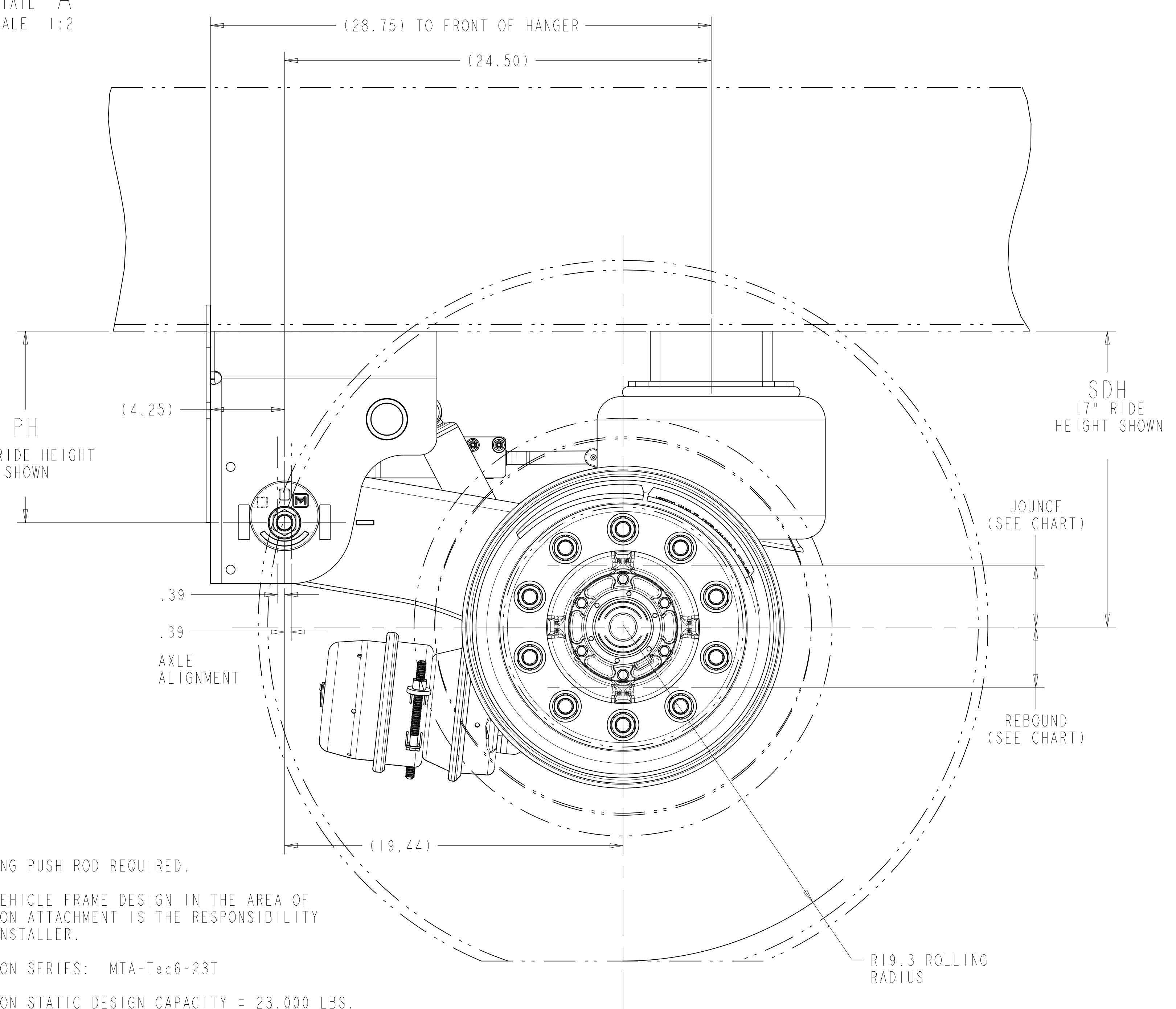
SCALE 1/8

TYP. SHOCK INSTALLATION

DUAL WHEEL APPLICATION

DETAIL A
SCALE 1:2

CAD FILES		
NAME	TYPE	
5-70010A D.7	DRAWING	
5-70010A D.5	MODEL	



SECTION A-A

● RATING BASED ON APPLICATION APPROVAL.

RATINGS FOR THE COMPONENTS WITHIN AN INDIVIDUAL MERITOR SUPPLIED SUSPENSION ASSEMBLY, INCLUDING BRAKES, HUBS, AND BEARINGS, MAY VARY AND MAY NOT BE EQUAL TO THE NOMINAL SUSPENSION RATING.

NO WELDING OR DRILLING ALLOWED ON TRAILING ARMS.
NO WELD WITHIN .25" OF FRAME BRACKET TOOLING HOLES.

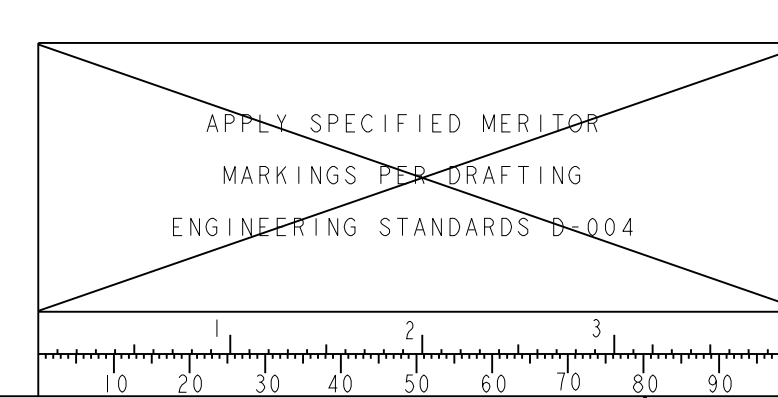
FOR FINAL INSTALLATION TO TRAILER REFER TO 5-70009A

REFER TO SHOP CHART 4-60559-42 FOR TORQUE INFORMATION

DATA BASED ON:
DUAL TIRE SIZE: 11R22.5
WHEEL OFFSET: 6.62

SINGLE: TIRE SIZE 445/50R22.5
WHEEL OFFSET: .56

PH	SDH	RIDE HEIGHT	JOUNCE	REBOUND
8.0	13.5	13.5"	2.5	4.5
8.0	14.0	14"	3.0	4.0
9.0	15.0	15"	3.0	4.0
10.0	16.0	16"	3.0	4.0
11.0	17.0	17"	3.0	4.0



APPLY SPECIFIED MERITOR MARKINGS TO DRAFTING ENGINEERING STANDARDS 0-604

THIS PRINT IS LOANED ON A CONFIDENTIAL BASIS SUBJECT TO RETURN UPON DEMAND BY MERITOR AND NOTHING HEREON MAY BE REPRODUCED, USED OR DISCLOSED IN WHOLE OR IN PART WITHOUT THE PRIOR WRITTEN PERMISSION OF MERITOR.

MATERIAL: ---

PROCESS: ---

APPROVED: SAIEG

DRAWN BY: C. HOLT 7-14-15

CHECKED BY: S.S. 7-14-15

3RD ANGLE PROJECTION

DRAWING SIZE: E

SCALE: 1:4

DESIGN CONTROL GROUP: TRAILER PRODUCTS N.A.

PART NO.: 5-70010A

EDC: 04627

RELEASE: MTA-Tec6-23T SERIES GROUP

PAGE 1 OF 1

INCH

C.I.P.T.E. NO. 128762

ORIGINAL FOR: MTA-Tec6-23T

DO NOT CHANGE MANUALLY